

Olympia I-5 Land

13232 Case Road SW
Olympia, WA

Ritchie Bros. Auctioneers
(www.rbauktion.com) is moving
to a new larger auction facility
in Lewis County, WA, and its
current facility in Olympia is
now available for sale.

± 78.64 acres total

Parcel A: ± 42.94 acres

Parcel B: ± 15.7 acres

Parcel C: ± 20 acres

Parcels A & B potentially rail-
served (Tacoma Rail)

Excellent I-5 access & exposure

Traffic count:

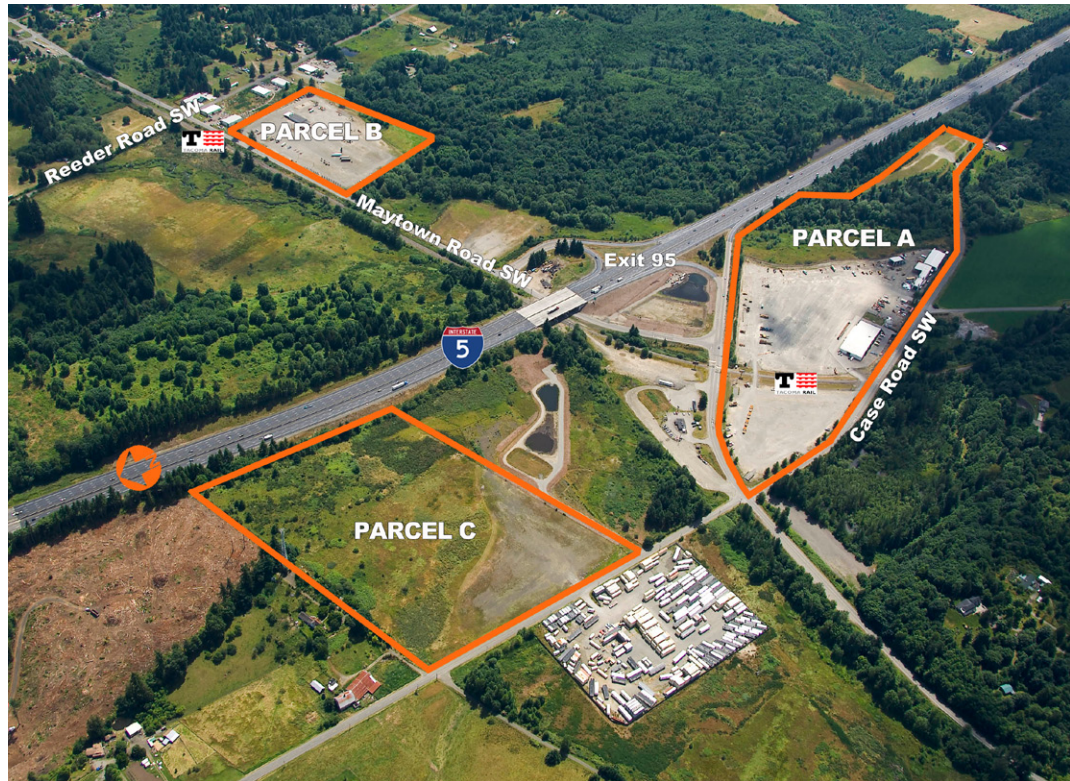
± 59,000 average per day (I-5)

Time & Distance

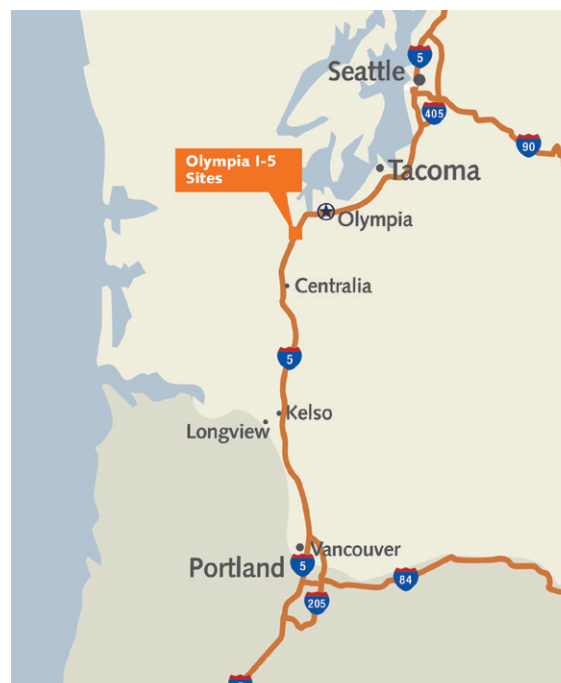
Port of Tacoma: ± 40 miles
40 min.

Port of Seattle: ± 70 miles
1 hr., 9 min.

Port of Portland: ± 100 miles
1 hr., 30 min.



Location



Contact

Scott Fraser, SIOR, CCIM
360.891.6600

sfraser@kiddermathews.com

Patricia J. Loveall, SIOR
206.248.7340

ploveall@kiddermathews.com

Doug Clerget

206.248.7312

dougc@kiddermathews.com

www.olympiaI-5land.com

Olympia I-5 Land



Parcel A

± 42.94 acres

± 27,500 SF auction building, ± 25,500 SF refurbishing facility, and ± 4,800 SF maintenance building

Potentially rail-served

Zoning:

RRI - Rural Resource Industrial and

RRR1/5 - Rural Residential Resource (southerly ± 11 acres of Parcel A)



Parcel B

± 15.7 acres

± 5,280 SF building

Potentially rail-served

Zoning:

RRI - Rural Resource Industrial



Parcel C

± 20 acres

Zoning:

RRI - Rural Resource Industrial

Contact

Scott Fraser, SIOR, CCIM
360.891.6600
sfraser@kiddermathews.com

Patricia J. Loveall, SIOR
206.248.7340
ploveall@kiddermathews.com

Doug Clerget
206.248.7312
doug@kiddermathews.com