

FOR LEASE

# 31 HIGH STREET

## BILLERICA, MA

**35,000-65,000 SF**  
Class A Industrial Space



### BUILDING SPECIFICATIONS

- + **Total Building:** 65,000 SF
- + **Total Available:** 35,000-65,000 SF
- + **Land Area:** 18 acres
- + **Year Built:** 1998
- + **Parking:** 0.33/1,000 SF
- + **Construction:** Steel
- + **Available:** Immediately
- + **Roof:** Metal
- + **Clear Height:** 28'
- + **Power:** 300A/240V, 3ph
- + **Loading Docks:** Six loading docks
- + **Sprinklers:** Dry



### CONTACT US

#### DAVID CORKERY

First Vice President  
+1 617 912 7036  
david.corkery@cbre-ne.com

#### JAKE BORDEN

Vice President  
+1 617 912 7026  
jake.borden@cbre-ne.com

[www.cbre-ne.com](http://www.cbre-ne.com)

**CBRE** | New England

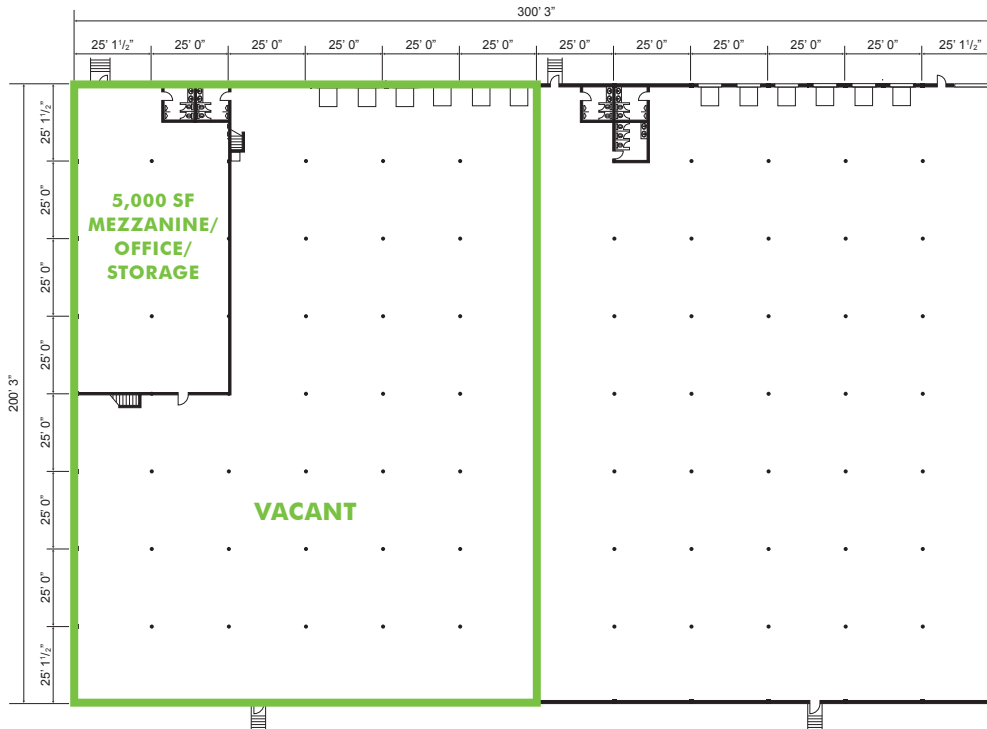
# 31 HIGH STREET

BILLERICA, MA

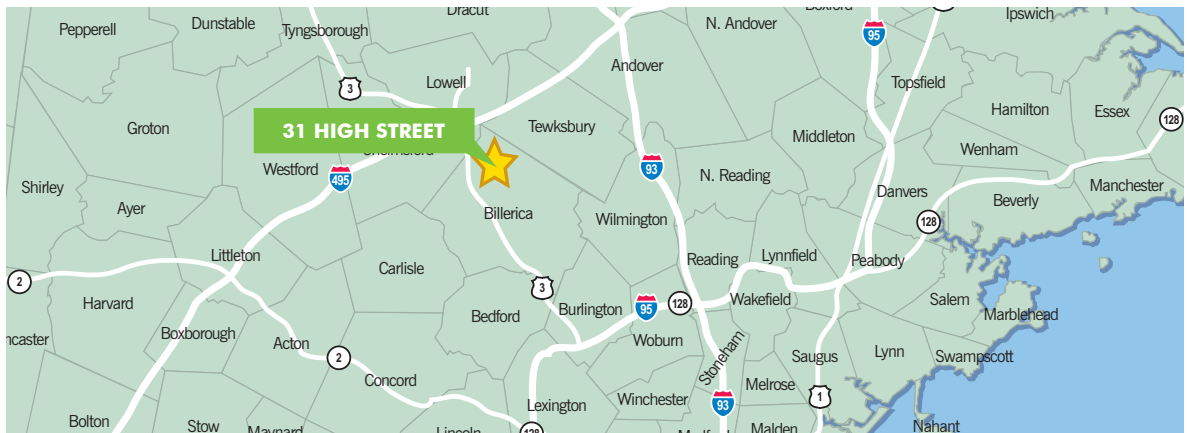
FOR LEASE  
35,000-65,000 SF  
Class A Industrial Space



## FLOOR PLAN



## PROPERTY LOCATION



© 2018 CBRE Richard Ellis-N.E. Partners, LP. The information contained in this document has been obtained from sources believed reliable. While CBRE, Inc. does not doubt its accuracy, CBRE, Inc. has not verified it and makes no guarantee, warranty or representation about it. It is your responsibility to independently confirm its accuracy and completeness. Any projections, opinions, assumptions or estimates used are for example only and do not represent the current or future performance of the property. The value of this transaction to you depends on tax and other factors which should be evaluated by your tax, financial and legal advisors. You and your advisors should conduct a careful, independent investigation of the property to determine to your satisfaction the suitability of the property for your needs.

Photos herein are the property of their respective owners and use of these images without the express written consent of the owner is prohibited.

[www.cbre-ne.com](http://www.cbre-ne.com)

**CBRE** | New England