

FOR LEASE

450 South Kitsap Boulevard Port Orchard, WA 98366

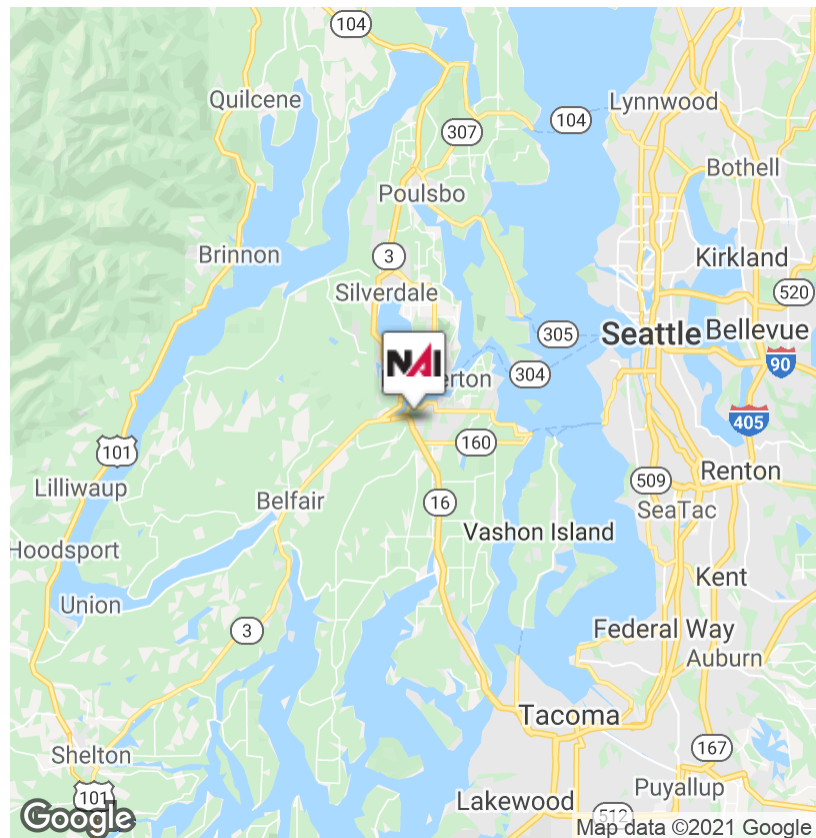
NAI Puget Sound
Properties

welltower



South Kitsap Medical Center | 821 - 4,403 SF

- Class A Medical Offices
- Suites sizes ranging from 821 - 4,403 RSF
- Urgent care, pharmacy, lab, medical imaging and on-site cafe
- Scenic and landscaped surroundings
- Conveniently located near Hwy 16 off of Tremont Street and South Kitsap
- Public transit served (Kitsap Transit)
- Call for lease rates



✉ **Kim Marvik**
+1 253 203 1325
kmarvik@nai-psp.com

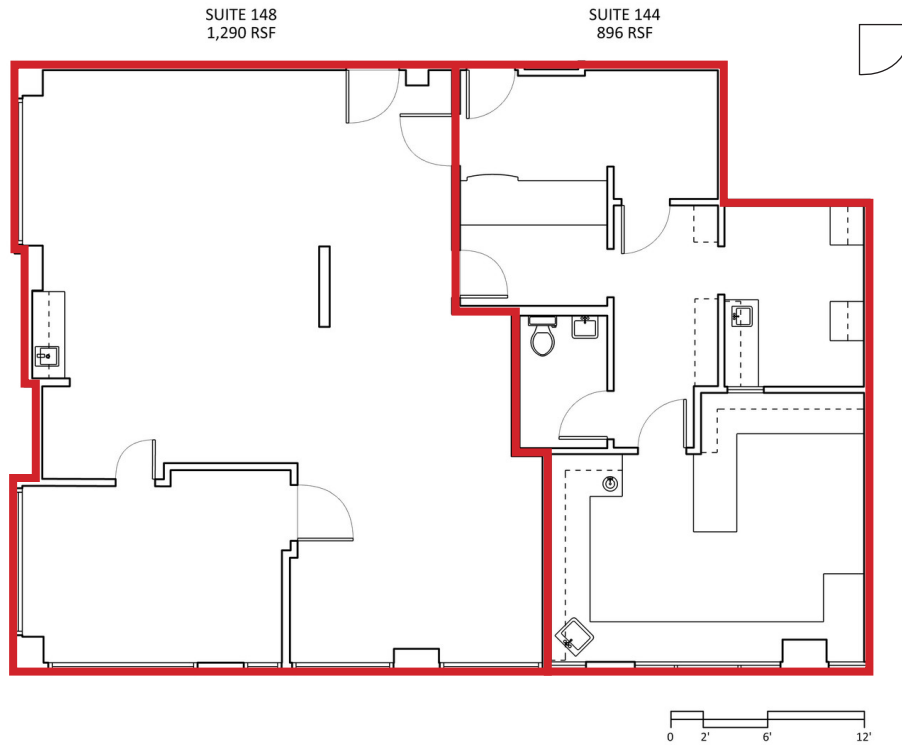
No Warranty Or Representation, Express Or Implied, Is Made As To The Accuracy Of The Information Contained Herein, And The Same Is Submitted Subject To Errors, Omissions, Change Of Price, Rental Or Other Conditions, Prior Sale, Lease Or Financing, Or Withdrawal Without Notice, And Of Any Special Listing Conditions Imposed By Our Principals. No Warranties Or Representations Are Made As To The Condition Of The Property Or Any Hazards Contained Therein Are Any To Be Implied.

NAI Puget Sound
Properties

FOR LEASE

450 South Kitsap Boulevard Port Orchard, WA 98366

Main Level Suites



Suite 148 - 1,290 RSF

Suite 144 - 896 RSF



*Not shown to scale

168 (821 RSF), 178 (4,403 RSF) & 188 (1,098 RSF)

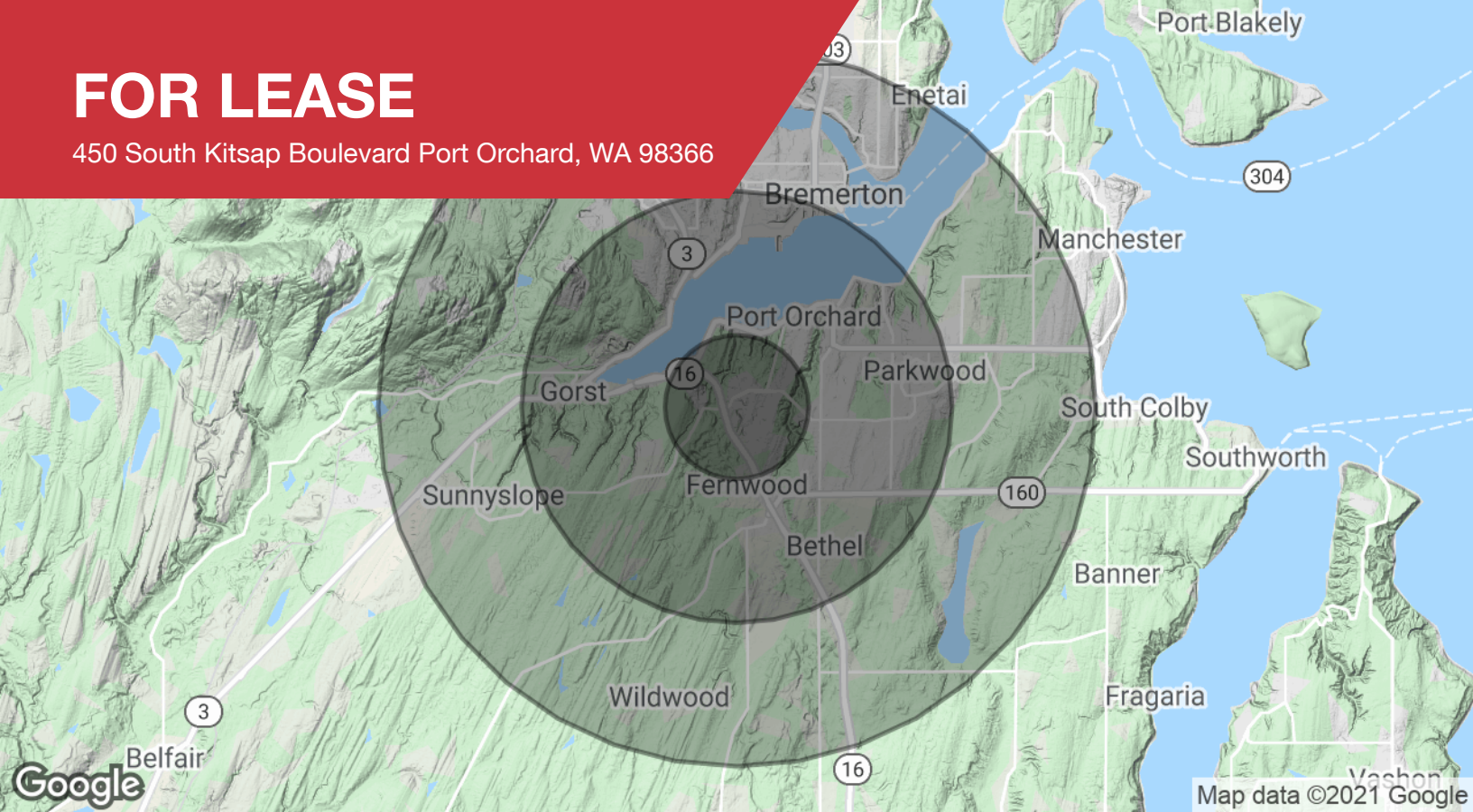
✉ **Kim Marvik**
+1 253 203 1325
kmarvik@nai-psp.com

No Warranty Or Representation, Express Or Implied, Is Made As To The Accuracy Of The Information Contained Herein, And The Same Is Submitted Subject To Errors, Omissions, Change Of Price, Rental Or Other Conditions, Prior Sale, Lease Or Financing, Or Withdrawal Without Notice, And Of Any Special Listing Conditions Imposed By Our Principals No Warranties Or Rep-resentations Are Made As To The Condition Of The Property Or Any Hazards Contained Therein Are Any To Be Implied.

NAI Puget Sound
Properties

FOR LEASE

450 South Kitsap Boulevard Port Orchard, WA 98366



Population

1 Mile

3 Miles

5 Miles

Total population	4,434	34,033	95,402
Median age	32.0	33.3	35.2
Median age (male)	29.7	32.1	34.6
Median age (Female)	36.5	35.4	36.3

Households & Income

1 Mile

3 Miles

5 Miles

Total households	1,724	12,736	37,743
# of persons per HH	2.6	2.7	2.5
Average HH income	\$60,970	\$56,553	\$56,494
Average house value	\$257,904	\$253,578	\$267,640

* Demographic data derived from 2010 US Census