

OFFICE SUITES FOR LEASE

5435 - 5445 Balboa Blvd, Encino



FEATURES

- Just Off Of The 101 Freeway
- Value Priced For Encino
- Property Renovations Underway
- **AT&T U-verse Fiber Now Available!**

AVAILABLE

| Suite | Size |
|--------------|-----------|
| 102 | 1,164 RSF |
| 104 | 867 RSF |
| 105 | 2,373 RSF |
| 205 | 1,128 RSF |
| 206 | 721 RSF |
| 212 | 1,190 RSF |
| Part 2nd Flr | 7,640 RSF |

PARKING *(per stall)*

3/1,000
\$70 Unreserved

LEASE RATE

\$2.00 PSF FSG

For more information please contact

Darren Casamassima
818.933.0303
dc@lee-re.com
BRE# 01425638

Scott Romick
818.933.0305
sromick@lee-re.com
BRE# 01323527

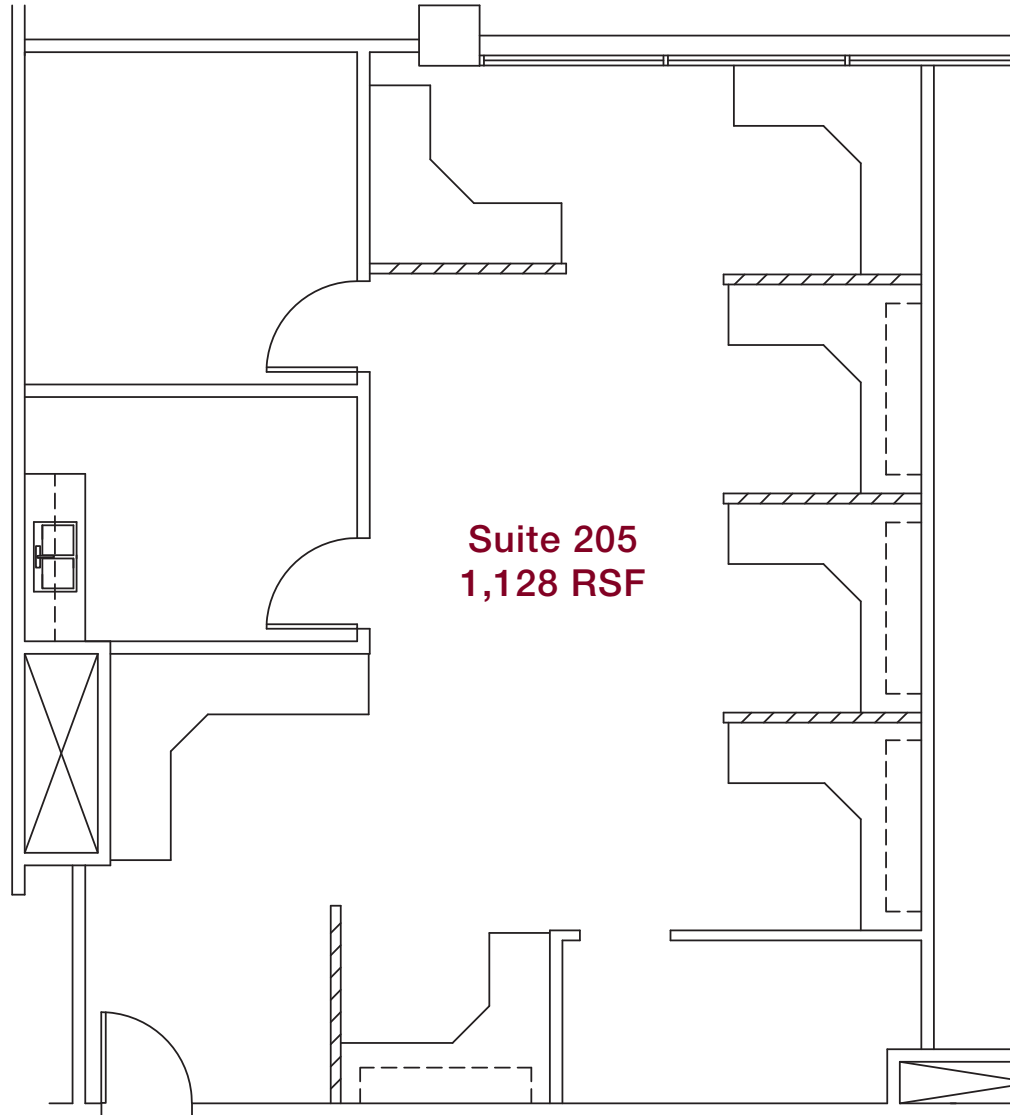


Lee & Associates® - LA North/Ventura, Inc. • Corporate ID #01191898
A Member of the Lee & Associates® Group of Companies
15250 Ventura Blvd., Suite 100 • Sherman Oaks, CA 91403
P:818.986.9800 F:818.933.0405 • www.lee-associates.com

No warranty or representation is made to the accuracy of the foregoing information. Terms of sale or lease and availability are subject to change or withdrawal without notice.

OFFICE SUITES FOR LEASE

5435 - 5445 Balboa Blvd, Encino



NOT TO SCALE

For more information please contact:

Darren Casamassima
818.933.0303
dc@lee-re.com
BRE# 01425638

Scott Romick
818.933.0305
sromick@lee-re.com
BRE# 01323527

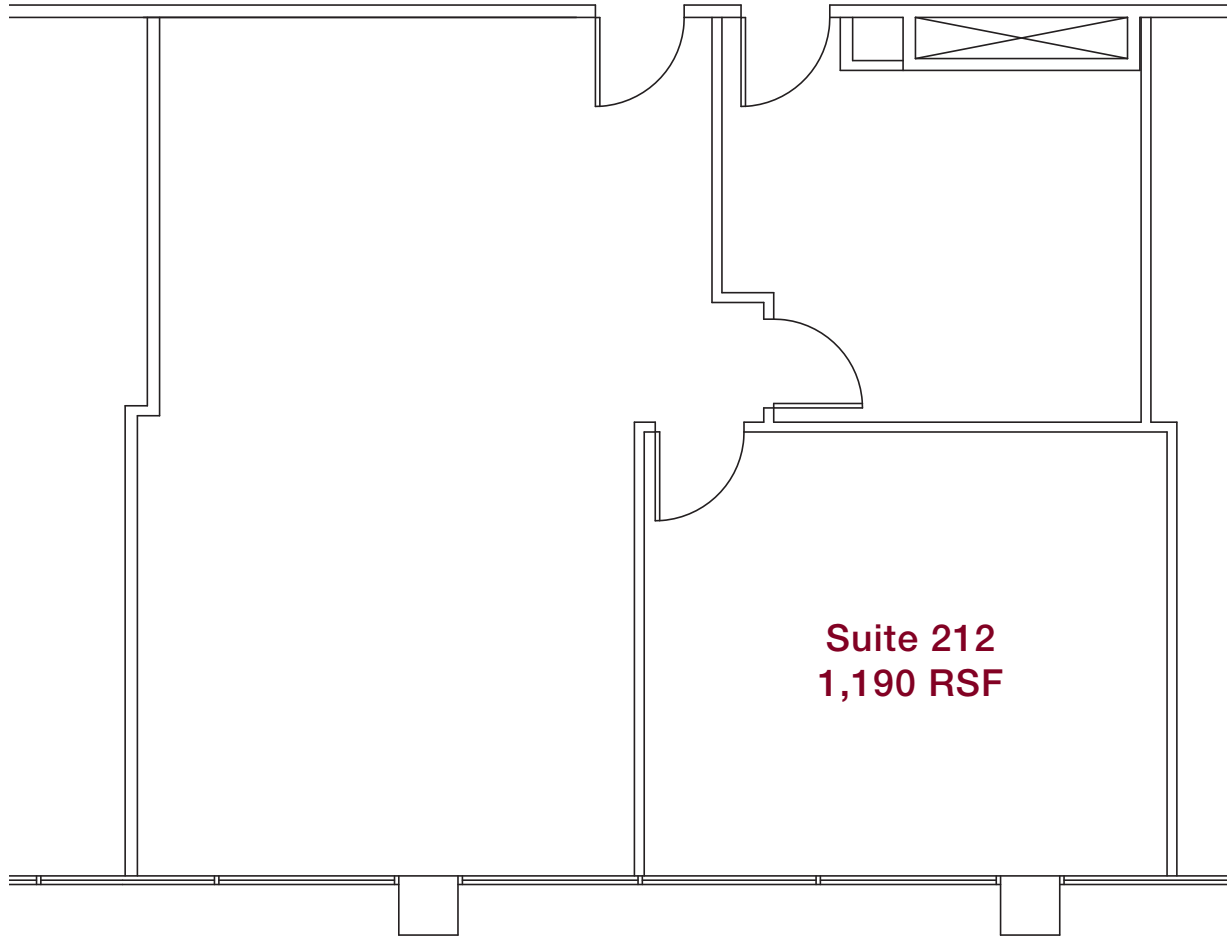
LEE & ASSOCIATES
COMMERCIAL REAL ESTATE SERVICES

Lee & Associates® - LA NorthVentura, Inc. • Corporate ID #01191898
A Member of the Lee & Associates® Group of Companies
15250 Ventura Blvd., Suite 100 • Sherman Oaks, CA 91403
P:818.986.9800 F:818.933.0405 • www.lee-associates.com

No warranty or representation is made to the accuracy of the foregoing information. Terms of sale or lease and availability are subject to change or withdrawal without notice.

OFFICE SUITES FOR LEASE

5435 - 5445 Balboa Blvd, Encino



Suite 212
1,190 RSF

NOT TO SCALE

For more information please contact:

Darren Casamassima
818.933.0303
dc@lee-re.com
BRE# 01425638

Scott Romick
818.933.0305
sromick@lee-re.com
BRE# 01323527

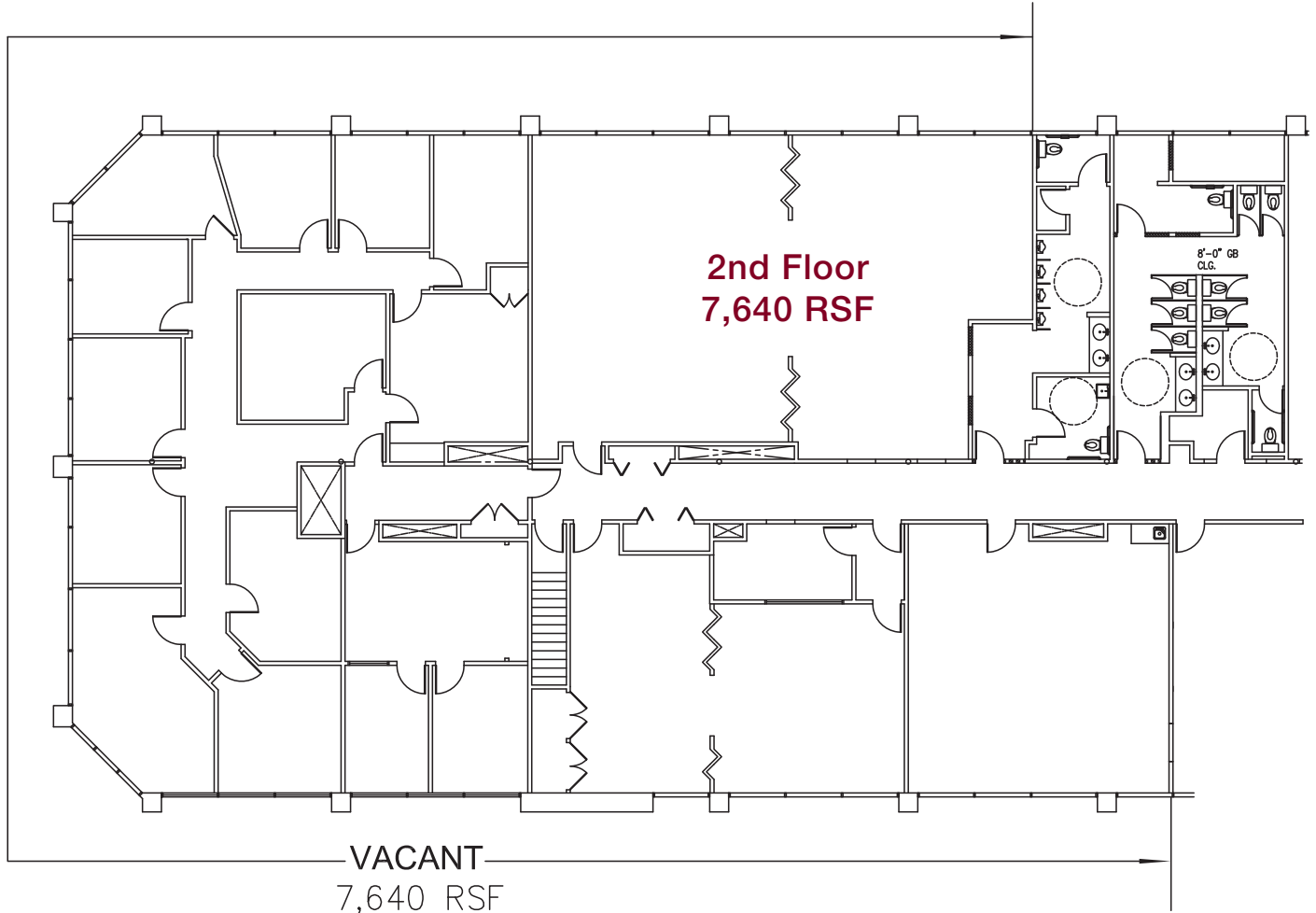


Lee & Associates® - LA NorthVentura, Inc. • Corporate ID #01191898
A Member of the Lee & Associates® Group of Companies
15250 Ventura Blvd., Suite 100 • Sherman Oaks, CA 91403
P:818.986.9800 F:818.933.0405 • www.lee-associates.com

No warranty or representation is made to the accuracy of the foregoing information. Terms of sale or lease and availability are subject to change or withdrawal without notice.

OFFICE SUITES FOR LEASE

5435 - 5445 Balboa Blvd, Encino



NOT TO SCALE

For more information please contact:

Darren Casamassima
818.933.0303
dc@lee-re.com
BRE# 01425638

Scott Romick
818.933.0305
sromick@lee-re.com
BRE# 01323527



Lee & Associates® - LA NorthVentura, Inc. • Corporate ID #01191898
A Member of the Lee & Associates® Group of Companies
15250 Ventura Blvd., Suite 100 • Sherman Oaks, CA 91403
P:818.986.9800 F:818.933.0405 • www.lee-associates.com

No warranty or representation is made to the accuracy of the foregoing information. Terms of sale or lease and availability are subject to change or withdrawal without notice.