



SOUTH SALT LAKE OFFICE AVAILABLE

2200 SOUTH STATE STREET, SALT LAKE CITY, UTAH 84115

RATE REDUCTION!



PROPERTY INFORMATION

- 10,092 SF Total Office Building
- 4,850 SF Second Level Office Available
- Site Size: 0.66 Acres
- Pylon & Crown Signage Available
- Natural Light Throughout
- ADA Accessible
- Abundant Parking
- State Street Frontage
- Easy Access to I-80 and I-15

LEASE RATE REDUCED!

FROM ~~\$15.00/SF~~ TO \$10.00/SF FULL SERVICE

CONTACT

801.617.1700

CRYSTAL JOHNSON |

DEREK KLOPFER |

COLTER SMITH |

CRYSTAL.JOHNSON@CRCNATIONWIDE.COM

DEREK.KLOPFER@CRCNATIONWIDE.COM

COLTER.SMITH@CRCNATIONWIDE.COM

DEMOGRAPHICS

	1 Mile	3 Mile	5 Mile
Population	16,973	137,556	335,783
Households	6,975	60,775	142,977
Avg. Household Income	\$66,198	\$83,505	\$86,587

TRAFFIC COUNTS

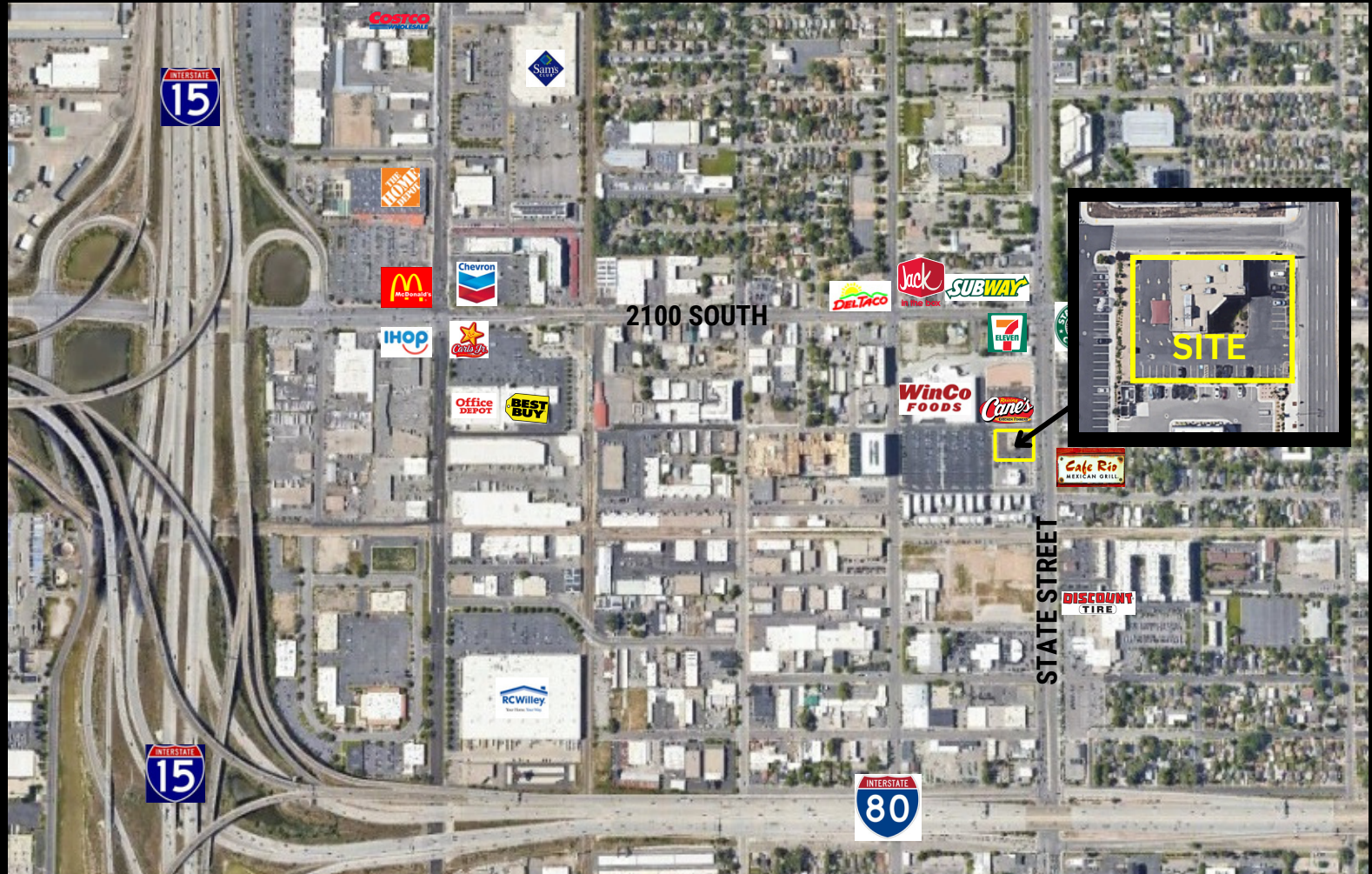
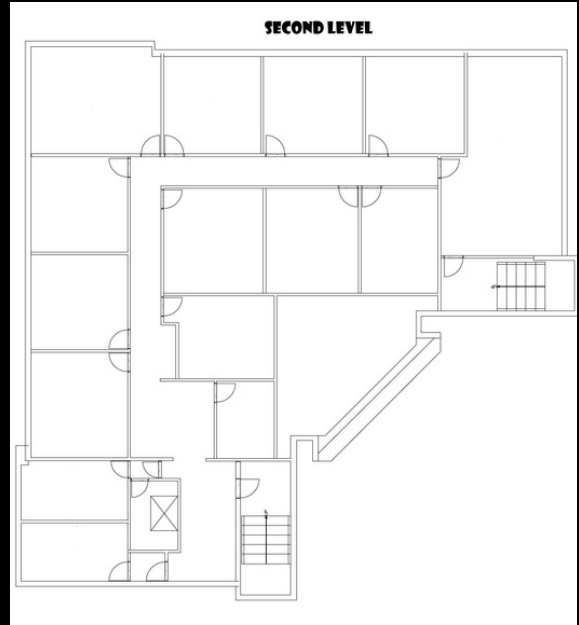
State Street: 39,859 Annual Average Daily Traffic

2100 South: 23,607 Annual Average Daily Traffic



SOUTH SALT LAKE OFFICE AVAILABLE

2200 SOUTH STATE STREET, SALT LAKE CITY, UTAH 84115



CONTACT
801.617.1700

CRYSTAL JOHNSON |
DEREK KLOPFER |
COLTER SMITH |

CRYSTAL.JOHNSON@CRCNATIONWIDE.COM
DEREK.KLOPFER@CRCNATIONWIDE.COM
COLTER.SMITH@CRCNATIONWIDE.COM