

# Retail Space Available

PALISADES MARKETPLACE • 1355-1399 SW McVEY AVE. • LAKE OSWEGO, OR 97035



## Grocery Anchored Retail Space Available in Lake Oswego

### Neighboring tenants include

- Lambs Thriftway
- Lakeshore Pharmacy
- Coffee Nook
- Wine Locker
- Great Clips
- Edward Jones

### For more information contact:

**Matt Sichel** SENIOR LEASING BROKER  
503.224.6791 ext.7206  
[mattsichel@elliottassociatesinc.com](mailto:mattsichel@elliottassociatesinc.com)

**Todd Amacher** LEASING BROKER  
503.224.6791 ext.7223  
[toddamacher@elliottassociatesinc.com](mailto:toddamacher@elliottassociatesinc.com)

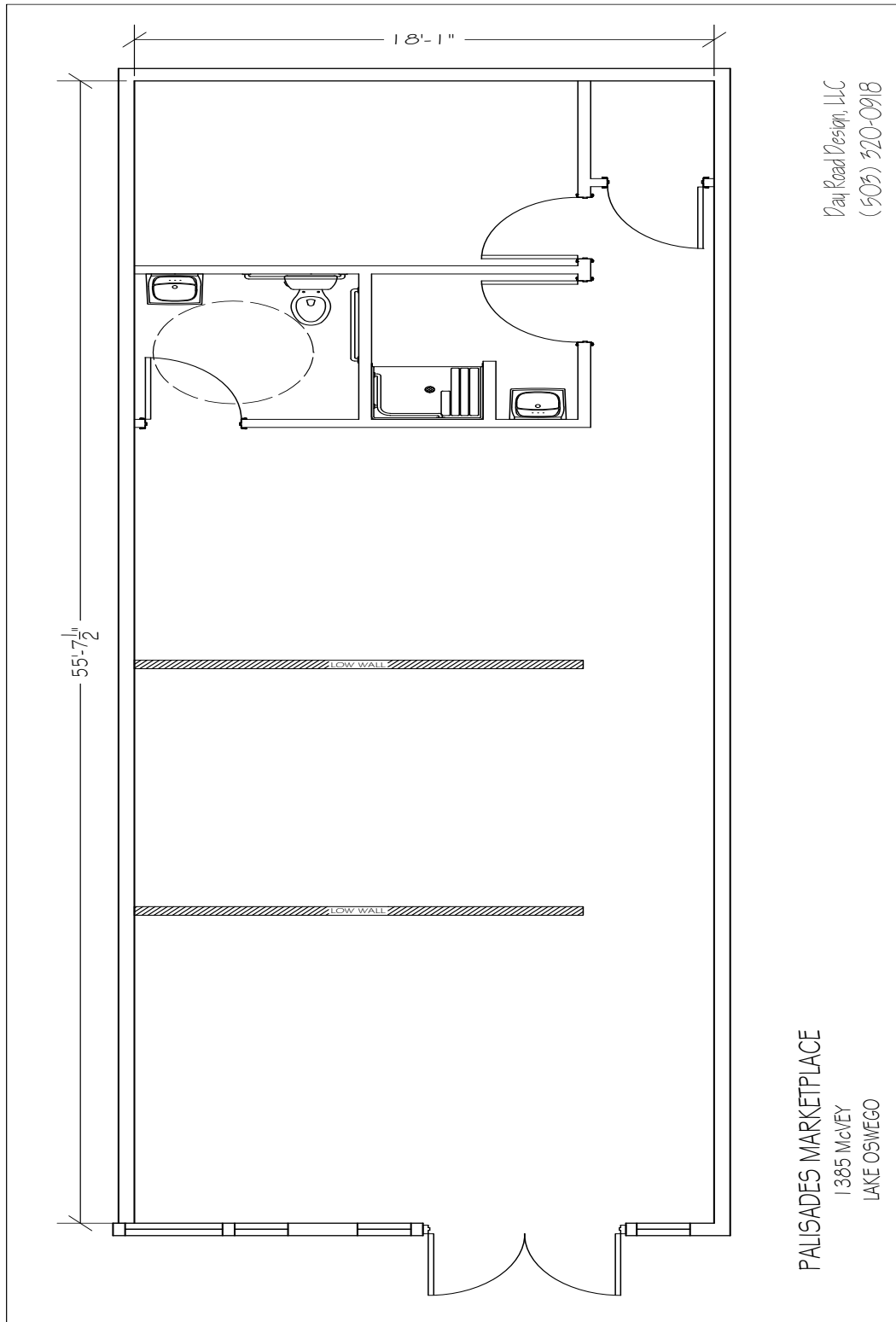
### Property information

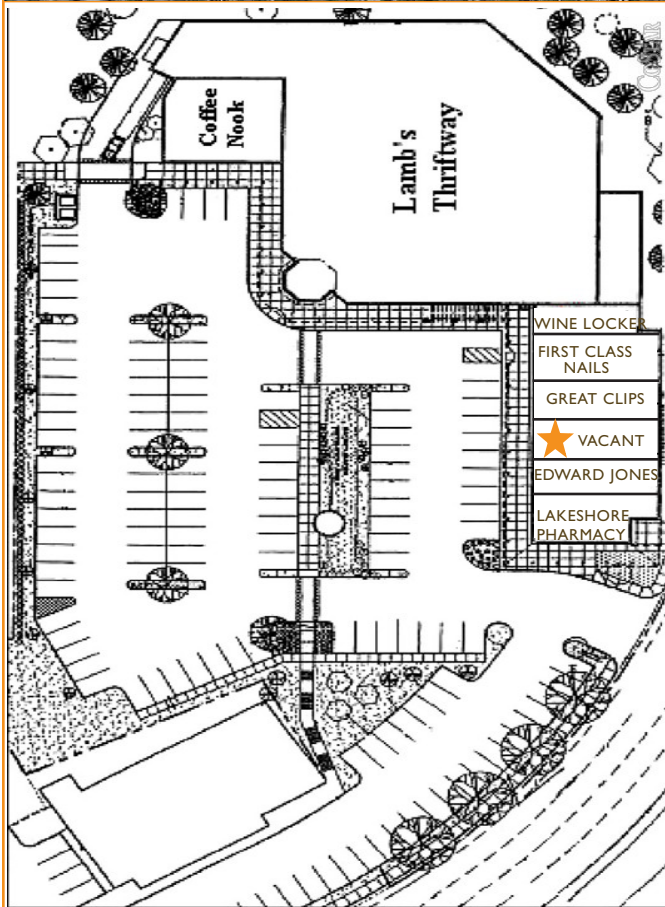
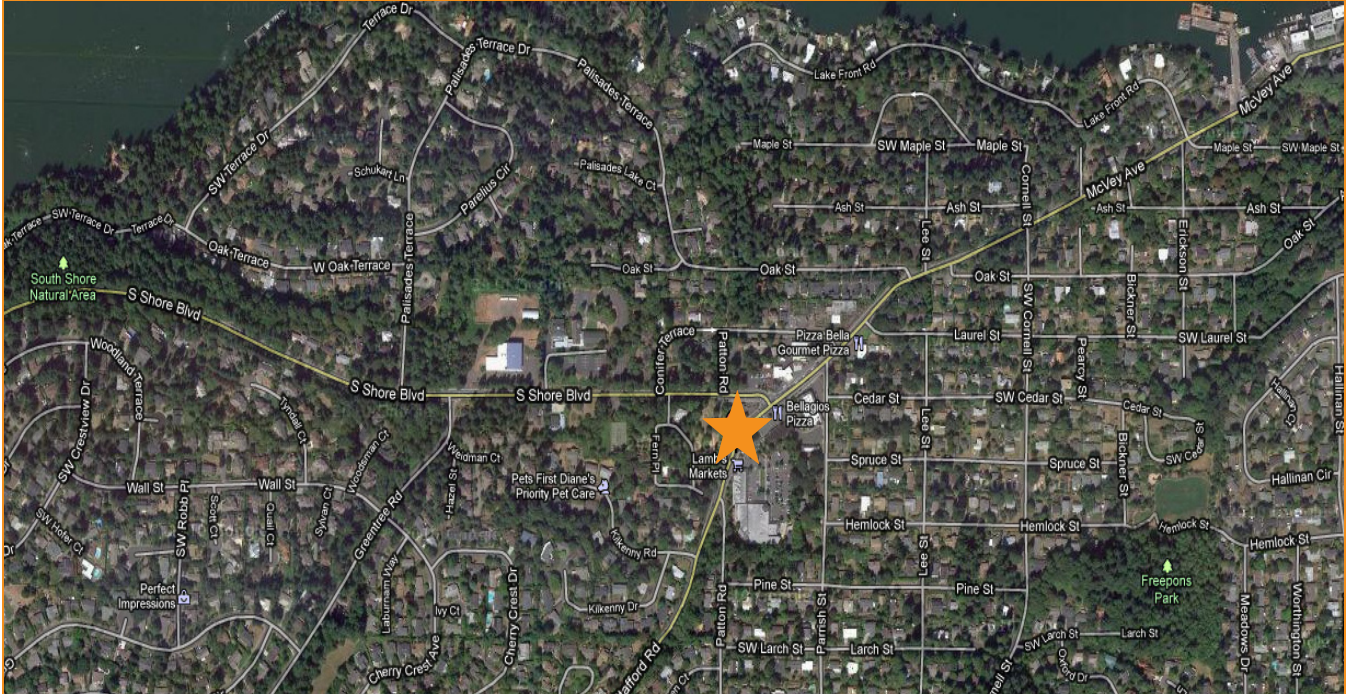
- Grocery anchored retail
- Excellent visibility and signage on McVey Ave.
- Plentiful parking
- Established neighborhood with higher income demographics
- Captured market

### Current Space Available

- 1,071 sf
- \$20.00 psf/NNN

PALISADES MARKETPLACE • 1355-1399 SW McVEY AVE. • LAKE OSWEGO, OR 97035



**PALISADES MARKETPLACE • 1355-1399 SW McVEY AVE. • LAKE OSWEGO, OR 97035**

**Demographics (2010 Estimates)**

	1 mile	3 miles	5 miles
Total Population	7,767	71,849	227,518
Avg. HH Income	125,296	105,732	89,575

**Demographics (2015 Projections)**

	1 mile	3 miles	5 miles
Total Population	8,053	73,821	235,645
Avg. HH Income	139,838	118,914	101,090

**For more information contact:**

**Matt Sichel** SENIOR LEASING BROKER  
 503.224.6791 ext.7206  
 mattsichel@elliottassociatesinc.com

**Todd Amacher** LEASING BROKER  
 503.224.6791 ext.7223  
 toddamacher@elliottassociatesinc.com