

FOR LEASE | ±716SF OFFICE SPACE

2028 Village Ln., Suite 203 | Solvang, CA 93463



PROPERTY OVERVIEW

First Class building that is ideal for a medical practitioner or office user. Situated in the City of Solvang and adjacent to Santa Ynez Cottage Hospital. Contact Listing Agents for further information.

Offering Specifics

Type	Office/Medical
Size	Approx. 716 SF
Lease Rate	\$2.35/SF NNN (\$0.73)
Deposit	Equal to one month's rent
Term	3-5 Years
Tenant Expenses	Utilities, Insurance, NNN's
CPI	CPI Increase, Min. 3%
Available	Immediately
Zoning	P-1 (Professional Institution)
Parking	Common
Floor	2nd Floor
HVAC	Yes
Year Built	1983/1989
Restrooms	Common
Elevator	One (1)
Sprinklers	Yes
CSO	3%



The information provided here has been obtained from the owner of the property or from other sources deemed reliable. We have no reason to doubt its accuracy, but we do not guarantee it.

Michael Chenoweth
805.879.9608
mchenoweth@radiusgroup.com
CA Lic. 01213196

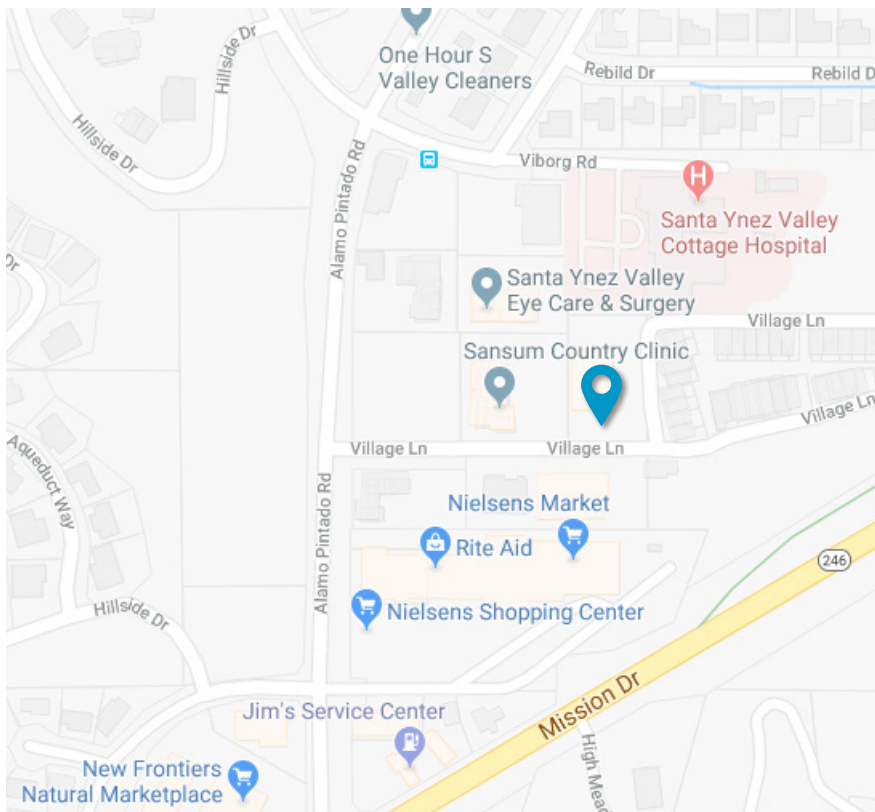
Co-listed by
Santa Ynez Valley Real
Estate Company

David Salgado
805.245.0416
dave@santaynezvalley.com
CA Lic. 00666274



FOR LEASE | ±716SF OFFICE SPACE

2028 Village Ln., Suite 203 | Solvang, CA 93463



The information provided here has been obtained from the owner of the property or from other sources deemed reliable. We have no reason to doubt its accuracy, but we do not guarantee it.

Michael Chenoweth

805.879.9608

mchenoweth@radiusgroup.com

CA Lic. 01213196

Co-listed by
Santa Ynez Valley Real
Estate Company

David Salgado

805.245.0416

dave@santaynezvalley.com

CA Lic. 00666274



FOR LEASE | ±716SF OFFICE SPACE

2028 Village Ln., Suite 203 | Solvang, CA 93463



The information provided here has been obtained from the owner of the property or from other sources deemed reliable. We have no reason to doubt its accuracy, but we do not guarantee it.

Michael Chenoweth
805.879.9608
mchenoweth@radiusgroup.com
CA Lic. 01213196

Co-listed by
Santa Ynez Valley Real
Estate Company

David Salgado
805.245.0416
dave@santaynezvalley.com
CA Lic. 00666274

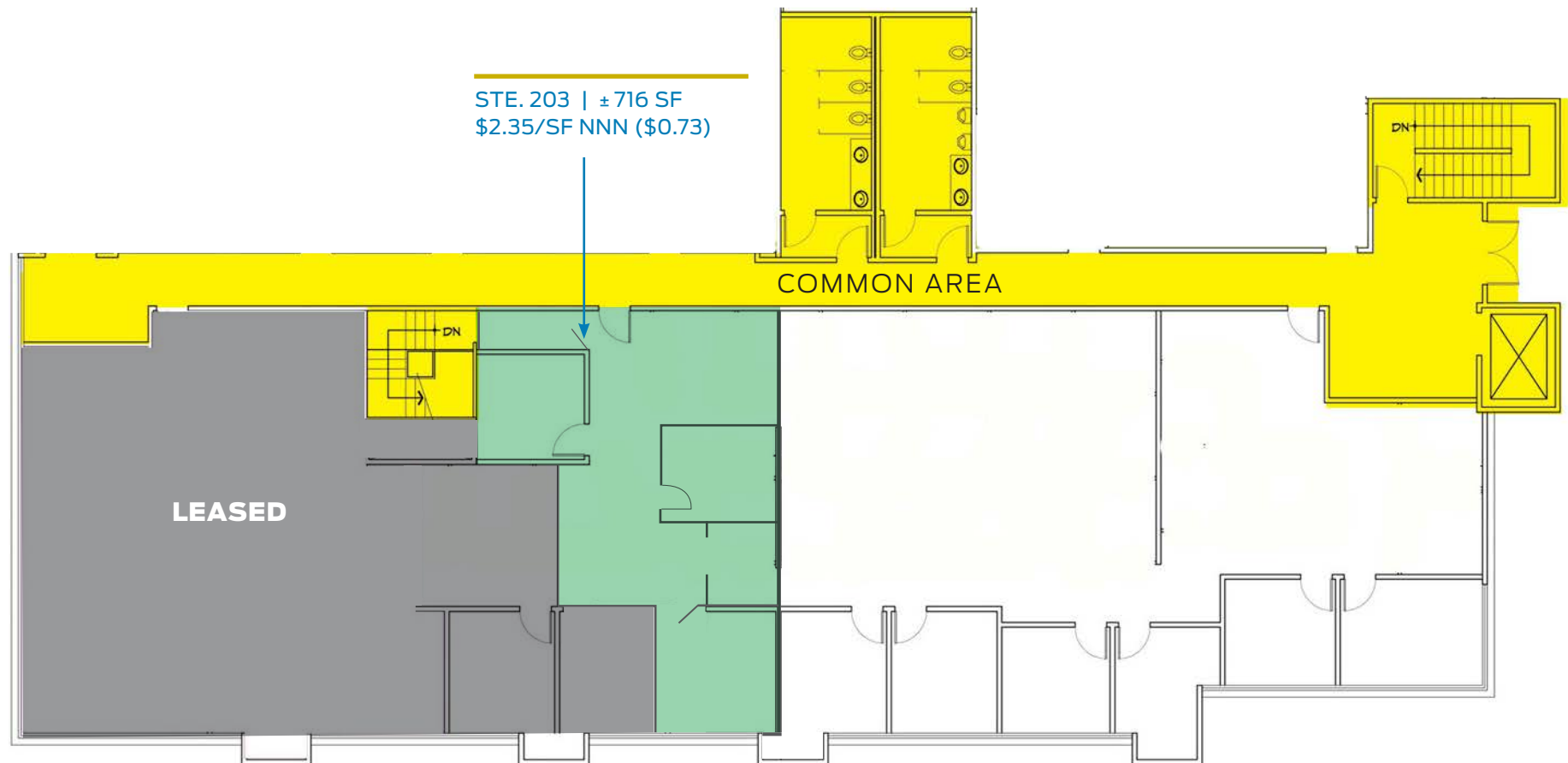


FOR LEASE | ±716SF OFFICE SPACE

2028 Village Ln., Suite 203 | Solvang, CA 93463



2ND FLR FLOOR PLAN



Not to scale

The information provided here has been obtained from the owner of the property or from other sources deemed reliable. We have no reason to doubt its accuracy, but we do not guarantee it.

Michael Chenoweth
805.879.9608
mchenoweth@radiusgroup.com
CA Lic. 01213196

Co-listed by
Santa Ynez Valley Real
Estate Company

David Salgado
805.245.0416
dave@santaynezvalley.com
CA Lic. 00666274

