

BRIGHT OFFICE WITH FLOOR TO CEILING WINDOWS OVERLOOKING COURTYARD

- 2ND FOOR MOSTLY OPEN SUITE AVAILABLE IMMEDIATELY IN THE HEART OF GEORGETOWN
- LARGE OPEN AREA
- 1 WORK ROOM
- GREAT VIEWS OF COURTYARD
- AMPLE COVERED PARKING ON SITE
- FLEXIBLE RATES AND LEASE TERMS

SUITE 216
996 SF



CANAL SQUARE
1054 31ST STREET NW



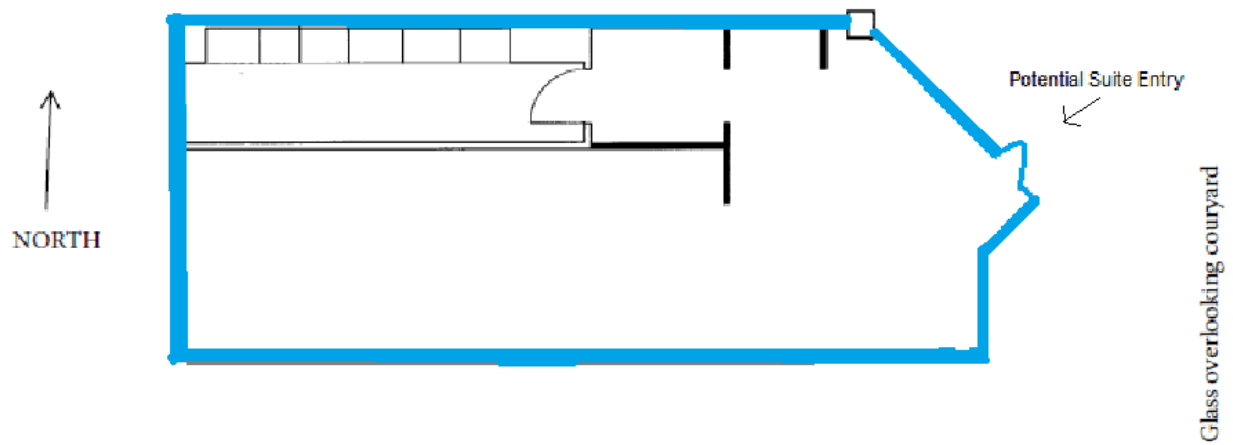
\$36 PSF
FULL SERVICE

TED VOGEL
MOLLYE SCHNEEBERG
MSCHNEEBERG@RBPROPERTIESINC.COM
(202) 342-1054
WWW.RBPROPERTIESINC.COM
RB properties, inc.

CANAL SQUARE (1054 31ST STREET NW)

SUITE 216

996 SF



8/31/17

IMAGE AND SCALE ARE APPROXIMATE