



Brokerage  
 Retail Site Selection  
 Investment  
 Development  
 Project and Construction  
 Consulting

Available For Lease • OFFICE  
**1188 East Paris Avenue SE**  
 Grand Rapids, MI 49546

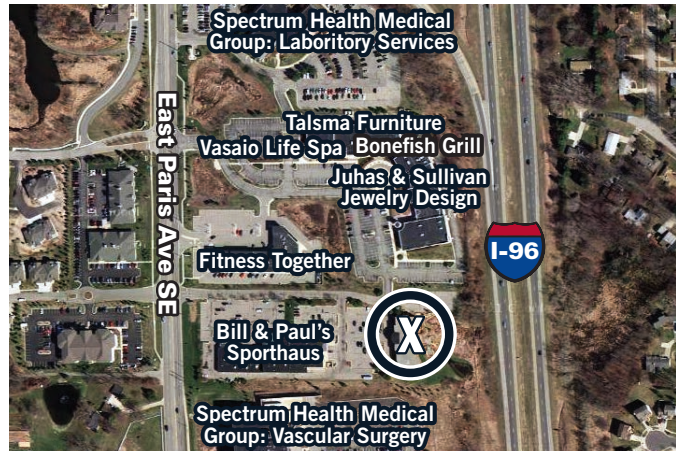
# THIS SPOT WORKS, PLAYS, DINES, SHOPS, POPS!



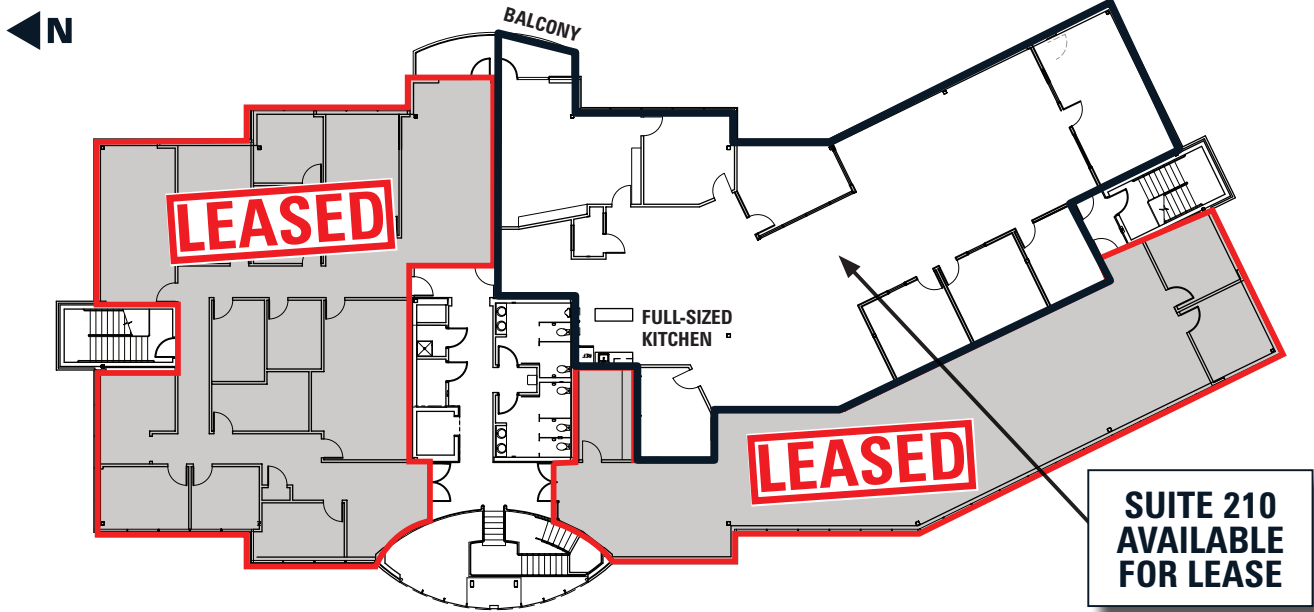
- 5,204 SF • 60-120 MONTHS • \$18.50 RSF •
- PRIVATE BALCONY • FREE ON-SITE PARKING •
- DOUBLE-SIDED, BACKLIT MONUMENT SIGNAGE ON EAST PARIS •

## BODY TEXT TITLE TO GO HERE

Anchoring the East Paris corridor and smack center between downtown Grand Rapids and Gerald R. Ford International Airport, this spot is optimal for the most active of organizations. This Class A, brick and glass building offers wall-to-wall windows, balconies with breathtaking vistas, and a professional brick patio stretching out into fresh-cut grass and the open air. At the epicenter of activity, you're always a few footsteps away from restaurants, cafés, boutiques, golf courses, dentists and doctors. Now you can work how you live—rapidly yet leisurely.



AVAILABLE SECOND FLOOR OFFICE SPACE  
Suite 210 • 5,204 RSF



BEAUTIFUL LARGE WINDOWS



SPACE DETAILS

- PRIVATE BALCONY
- CLASS A BUILDING IN VILLAGE-STYLE SETTING
- EXTERIOR BUILDING SIGNAGE AVAILABLE FACING I-96
- GLASS AND BRICK EXTERIOR
- FREE ON-SITE PARKING
- WALKING DISTANCE TO DINING, DAY SPAS AND RETAIL
- ELECTRONIC KEYPAD SECURITY SYSTEM
- DOUBLE-SIDED, BACKLIT MONUMENT SIGNAGE ON EAST PARIS
- FIVE WAYS TO ENTER AND EXIT THE OFFICE/RETAIL VILLAGE
- TENANT IMPROVEMENT MONEY AVAILABLE TOWARDS CUSTOMIZED BUILD OUT

MEET YOUR NEIGHBORS

**BONEFISH GRILL**  
**BILL & PAUL'S SPORTHAUS**  
**TALSMA FURNITURE**  
 GROSKOPF'S LUGGAGE & GIFTS  
**JUHAS & SULLIVAN JEWELRY DESIGN**  
 GRAND RAPIDS BICYCLE COMPANY

**VENTURES**

**WATERMARK GRILLE**  
**JU SUSHI & LOUNGE**  
 FITNESS TOGETHER CAFE  
**VASAIO LIFE SPA**

**MARCO NEW AMERICAN BISTRO**  
**ZOUP!**  
 SUBWAY  
 TRAILHEAD

CONTACT:

**Chip Bowling**  
 Mobile: 616.915.9080  
 Direct: 616.726.2701  
 chip@xventureswm.com

**Shelby Reno**  
 Mobile: 616.540.8216  
 Direct: 616.726.2713  
 shelby@xventureswm.com

