

UPPER WEST  
SIDE

NEW YORK  
NY

# 201 COLUMBUS AVENUE



# SPACE DETAILS

## LOCATION

Northeast corner of West 69th Street

## APPROXIMATE SIZE

Ground Floor 2,000 SF

Basement 2,000 SF

Total 4,000 SF

## FRONTAGE

34 FT 3 IN on Columbus Avenue

65 FT 4 IN on West 69th Street

## TERM

Long term

## POSSESSION

Immediate

## SITE STATUS

Formerly Joie

## NEIGHBORS

Madewell, Marine Layer, Club Monaco, Vince, Theory, REISS, Bluemercury, rag & bone, J. Jill, Equinox Fitness Club, Barry's Bootcamp, Century 21, and Bed Bath & Beyond

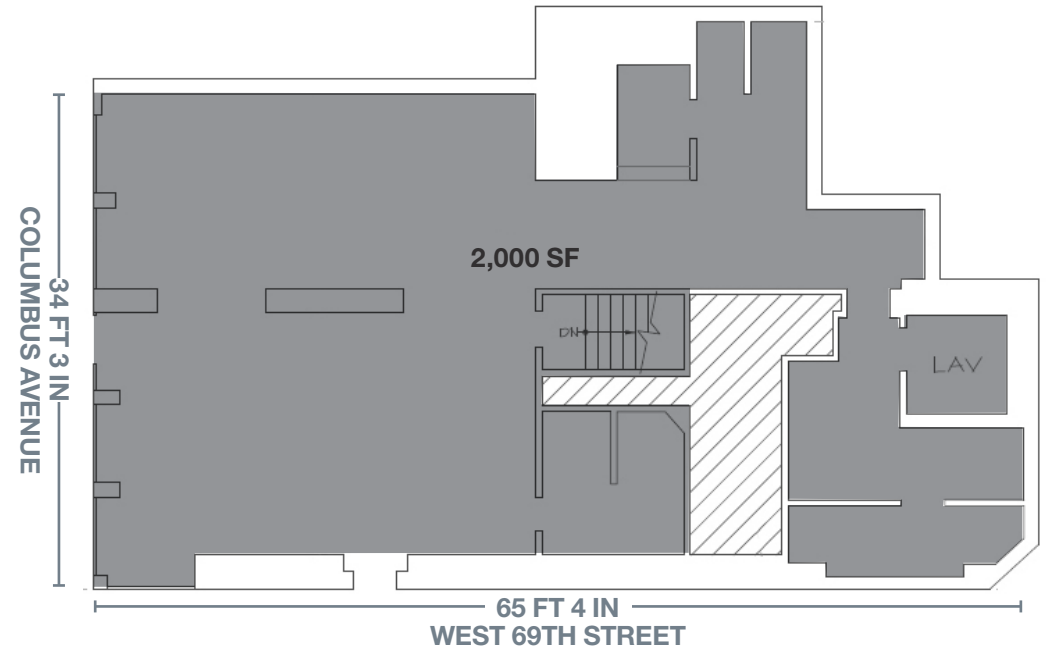
## COMMENTS

Seven-day-a-week market

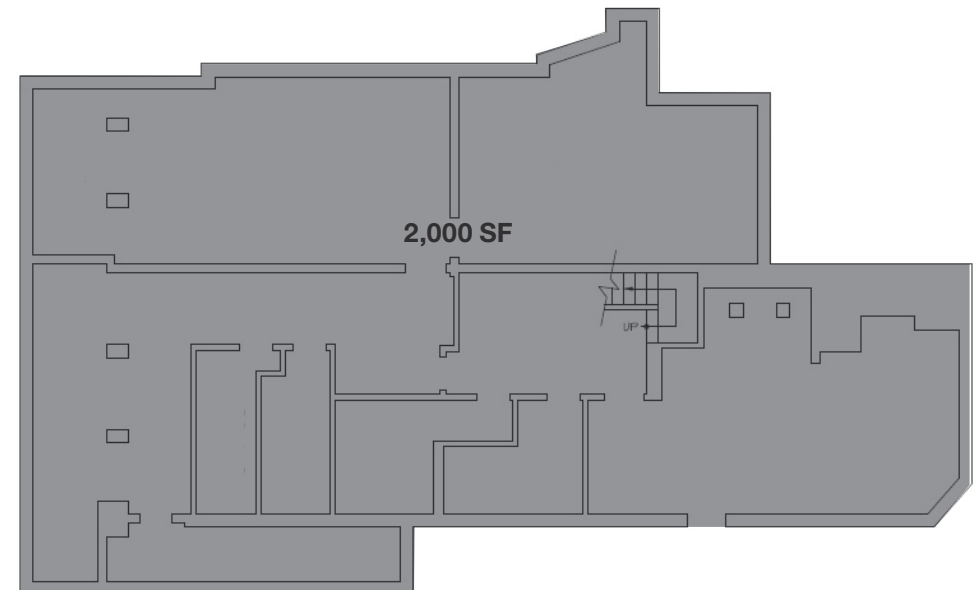
In turnkey condition

Premier corner opportunity in a dense residential neighborhood

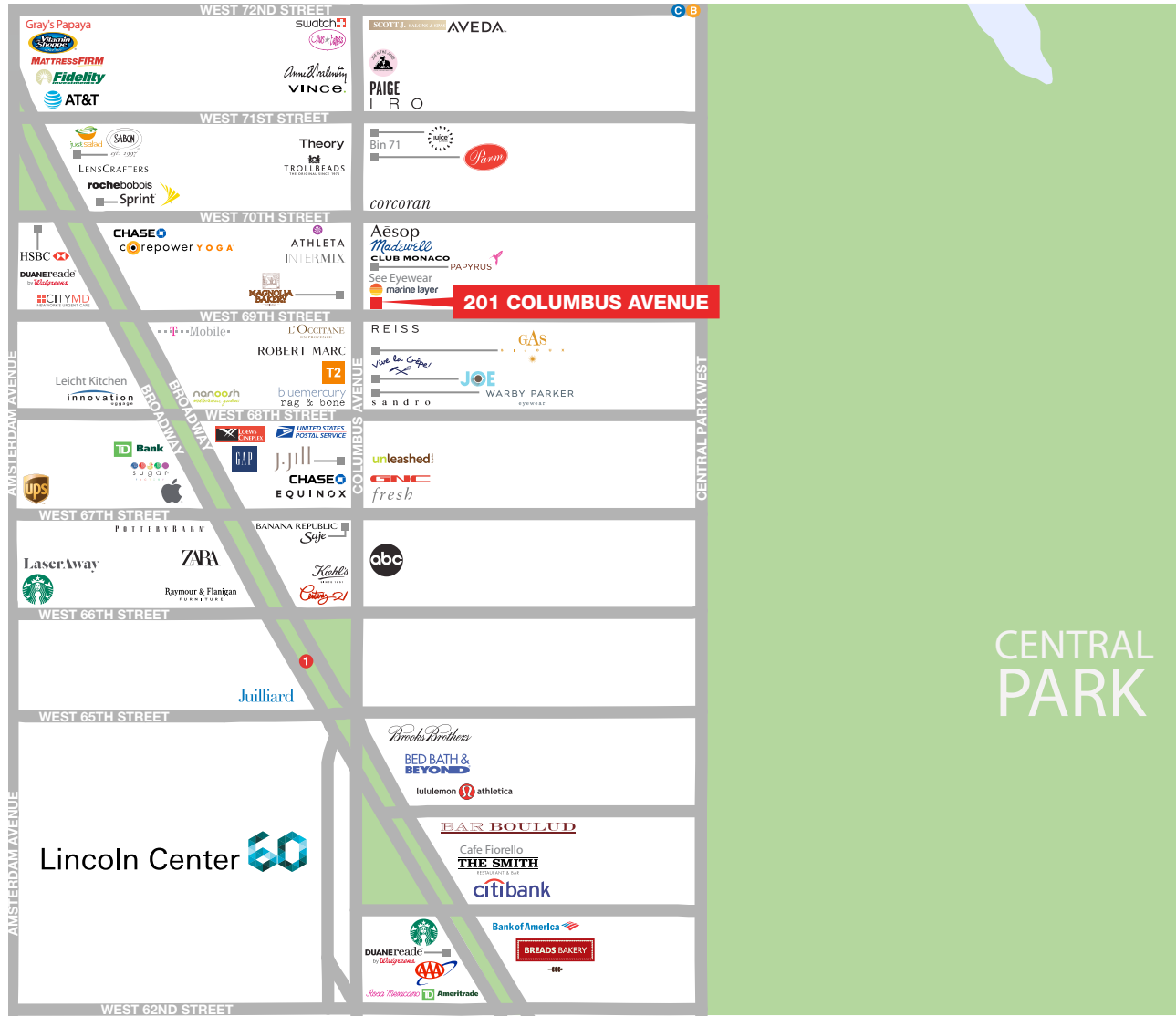
## GROUND FLOOR



## BASEMENT



# AREA RETAIL



⊕ COMING SOON

## CONTACT EXCLUSIVE AGENTS

**ARIEL SCHUSTER**  
212.331.0132  
ariel.schuster@ngkf.com

**JASON WECKER**  
212.916.3365  
jason.wecker@ngkf.com



NGKF.COM

© 2019 NEWMARK KNIGHT FRANK RETAIL. The information contained herein has been obtained from sources deemed reliable but has not been verified and no guarantee, warranty or representation, either express or implied, is made with respect to such information. Terms of sale or lease and availability are subject to change or withdrawal without notice.