



LOMAS PACIFIC I&II

9619 Chesapeake Drive & 9444 Farnham Street





Lomas Pacific I - 9619 Chesapeake Drive

SUITE #	SF	\$/SF	AVAILABLE	COMMENTS
102	1,590	\$2.25 + U	Now	Recently upgraded improvements in the suite, including 4 private offices, a break room, and open office area for cubes.
208	1,763	\$2.25 + U	Now	Suite is in warm-shell condition ready for new improvements.

Lomas Pacific II - 9444 Farnham Street

SUITE #	SF	\$/SF	AVAILABLE	COMMENTS
107	1,448	\$2.25 + U	Now	Brand new spec suite complete! One closed office, small conference room, break room, and open office area.
200	7,316	\$2.25 + U	April 15, 2018	Double door entry off second floor lobby, great glass-line, 6 private offices, break room, conference room, IT closet, and large open office area for cubes.

Project Features

- Two, 3-story office buildings located in Kearny Mesa
 - 9619 Chesapeake Drive
44,599 RSF
 - 9444 Farnham Street
43,176 RSF
- 4/1,000 USF Parking Ratio
- Showers on-site
- Outdoor seating/meeting areas
- Excellent ingress/egress to I-15 and CA-52
- Walking distance to retail amenities and public transit
- Street parking available



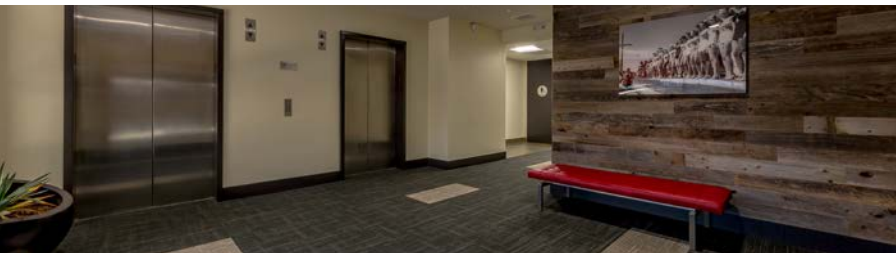
LOMAS PACIFIC I&II

9619 Chesapeake Drive & 9444 Farnham Street

Renovation Highlights

Renovation Highlights

- Repainted exteriors and new entry façade on each building
- Completely renovated restrooms
- New modern lobbies
- New digital directory
- Updated common areas and corridors
- Updated landscaping





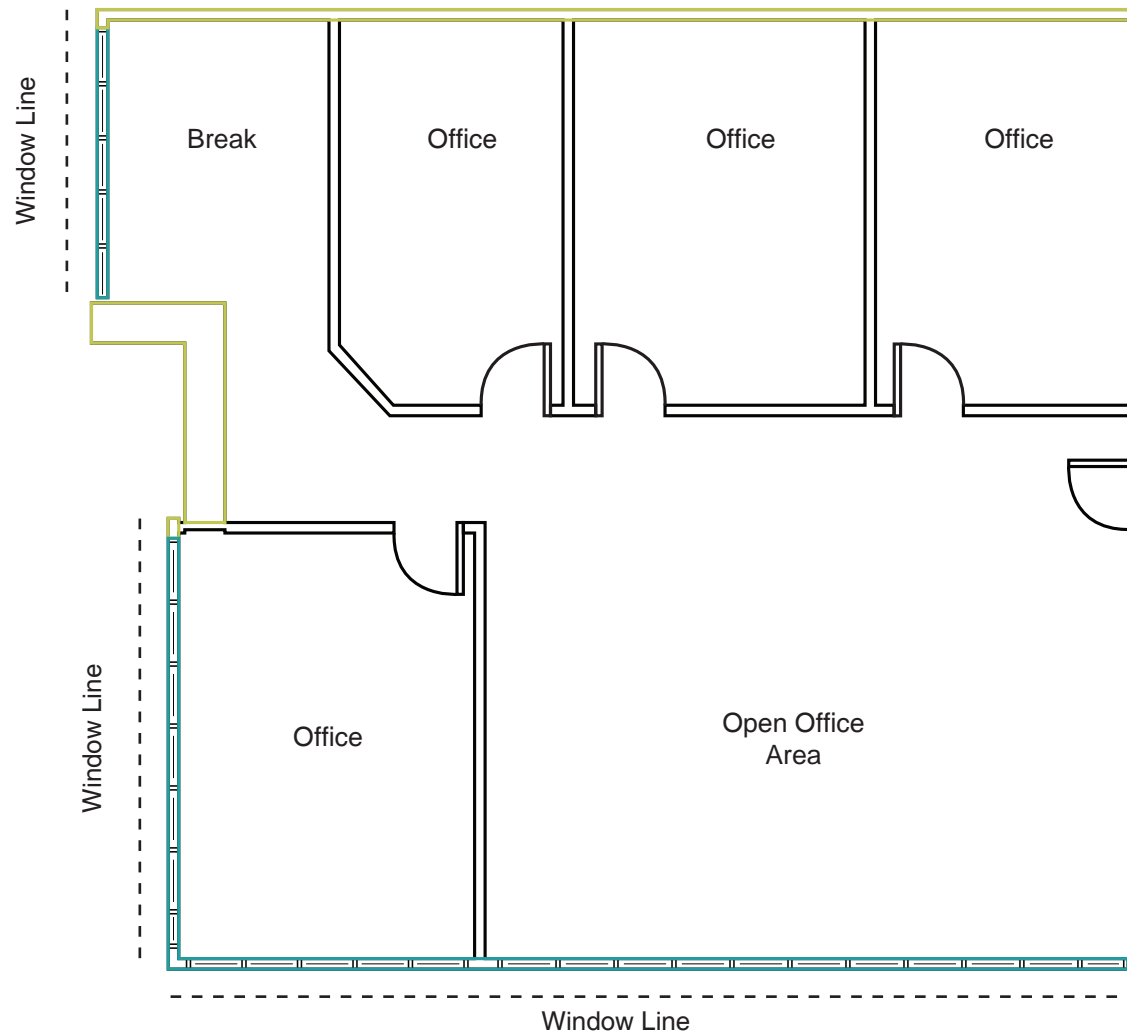
LOMAS PACIFIC I

9619 Chesapeake Drive

Suite 102 | 1,590 SF

Available Now

\$2.25/SF Plus Utilities





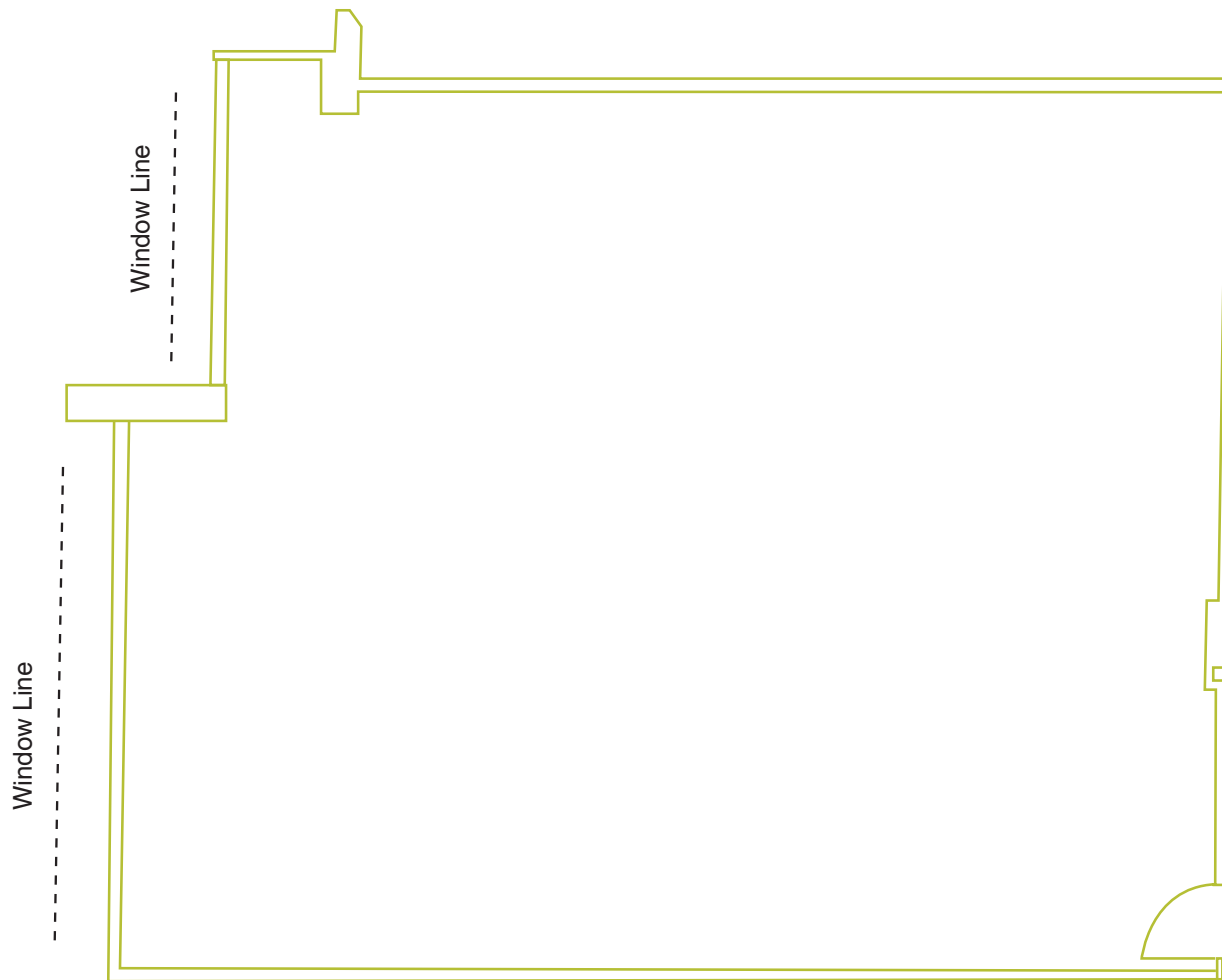
LOMAS PACIFIC I

9619 Chesapeake Drive

Suite 208 | 1,763 SF

Available Now

\$2.25/SF Plus Utilities





LOMAS PACIFIC II

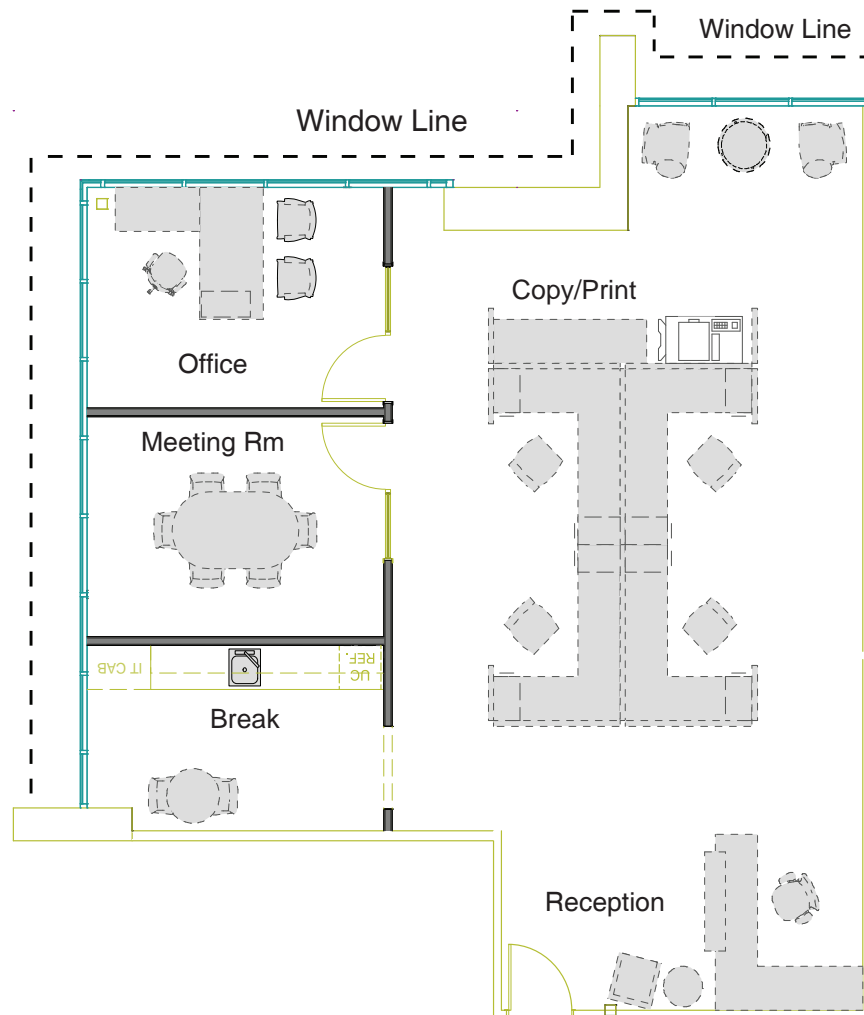
9444 Farnham Street

Suite 107 | 1,448 SF

Available Now

\$2.25/SF Plus Utilities

Spec Suite





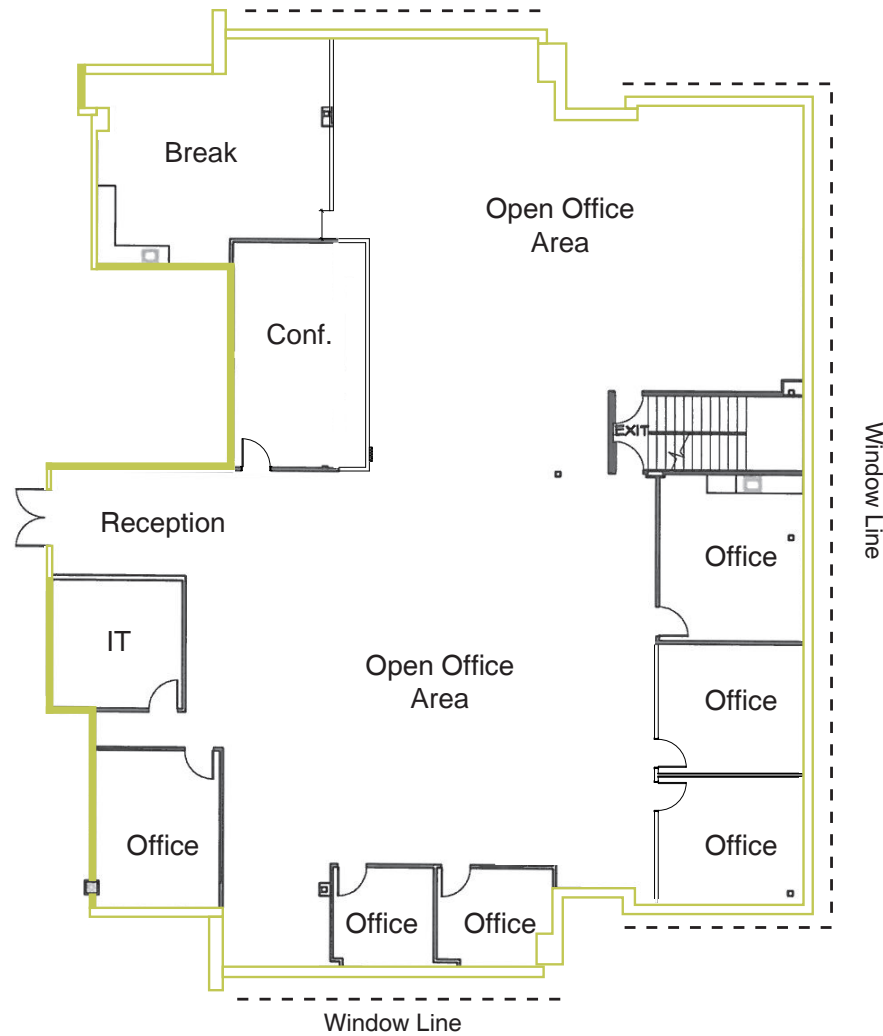
LOMAS PACIFIC I

9444 Farnham Street

Suite 200 | 7,316 SF

Available April 15, 2018

\$2.25/SF Plus Utilities



Pacific Ocean

Mission Bay

Balboa Ave

Ruffin Rd

Clairemont Mesa Blvd

Ruffin Rd

Chesapeake Dr

Clairemont Mesa Blvd




LOMAS PACIFIC I&II
9619 Chesapeake Drive & 9444 Farnham Street

LEGEND

-  RETAIL
-  KAISER PERMANENTE
-  HOTEL



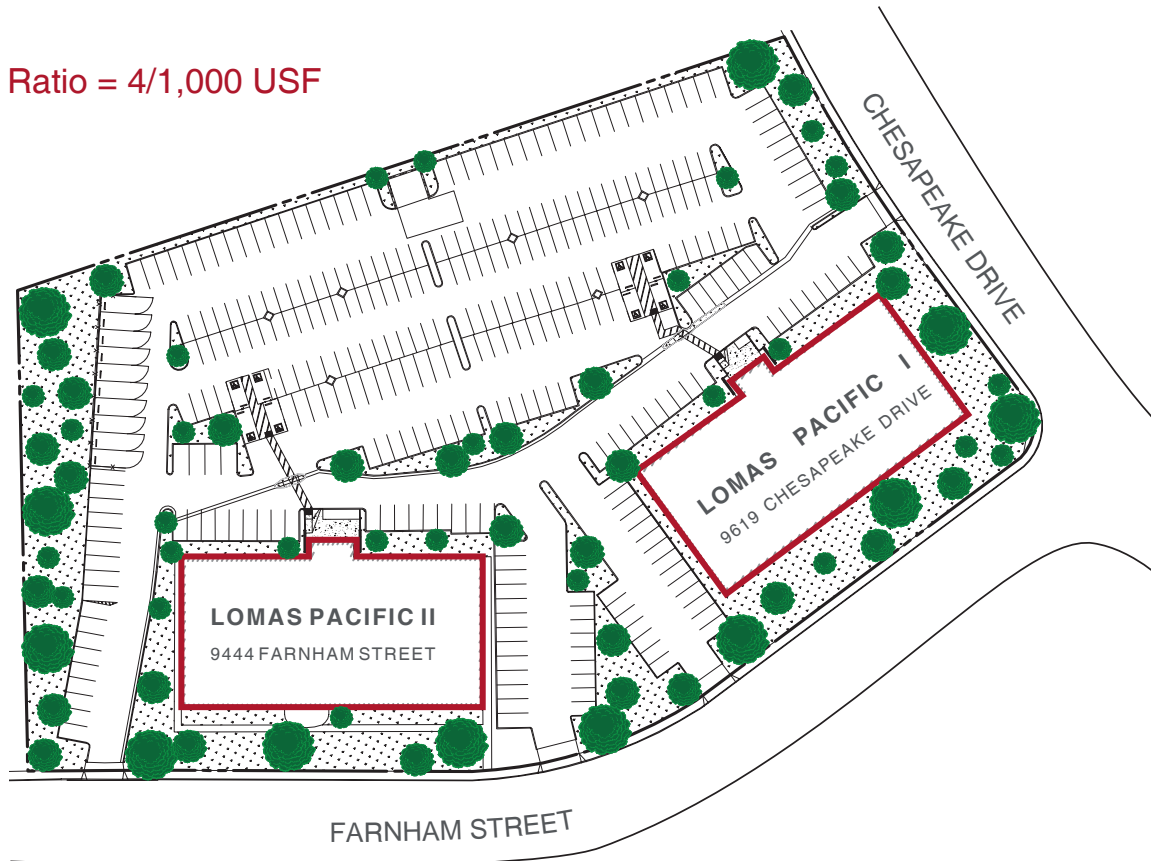


LOMAS PACIFIC I&II

9619 Chesapeake Drive & 9444 Farnham Street

Site Plan

Parking Ratio = 4/1,000 USF





LOMAS PACIFIC I&II

9619 Chesapeake Drive & 9444 Farnham Street



For more information, please contact:

Bill Cavanagh

+1 858 546 5460

bill.cavanagh@cushwake.com

CA Lic. 00905262

Duncan Dodd, SIOR

+1 858 546 5459

duncan.dodd@cushwake.com

CA Lic. 01064314

Mike Novkov

+1 858 546 5412

mike.novkov@cushwake.com

CA Lic. 01890388

4747 Executive Drive, 9th Floor

San Diego, CA 92121

P +1 858 546 5400 | F +1 858 630 6320

cushmanwakefield.com