



**CUSHMAN &
WAKEFIELD**

FOR LEASE

CAPITAL CORPORATE CENTER

**3320 & 3330 DATA DRIVE & 10680 WHITE ROCK RD
RANCHO CORDOVA, CA**



**5 BUILDING COMPLEX
ON THE CORNER OF WHITE
ROCK RD & DATA DRIVE**

BUILDING HIGHLIGHTS

- Move in ready suites with immediate availability
- Multiple buildings allow for easy expansion or downsizing capabilities
- Multiple Suites from ±1,658 RSF
- Abundant Free Parking
- Easy Access to Highway 50 from Zinfandel Drive
- On-site Deli at 3320 Data Drive
- Mature Landscaping provides plenty of shade and outdoor seating, plus soothing water features

LEASING STRENGTHS

- Economic lease rates in a quality project
- Sophisticated ownership with over 500,000 SF in surrounding corridor
- Professionally managed by KCM Property Management
- Parking: Free, 4.0/1,000 SF

RON THOMAS, SIOR
Executive Director
+1 916 288 4801
ron.thomas@cushwake.com
LIC #01193241

CHRIS SCHWARZE
Executive Director
+1 916 288 4803
chris.schwarze@cushwake.com
LIC #01291261

ZACH MOSLE, CCIM
Senior Associate
+1 916 329 1543
zach.mosle@cushwake.com
LIC #01924595

400 Capitol Mall, Suite 1800
Sacramento, California 95814
main +1 916 288 4800
cushmanwakefield.com



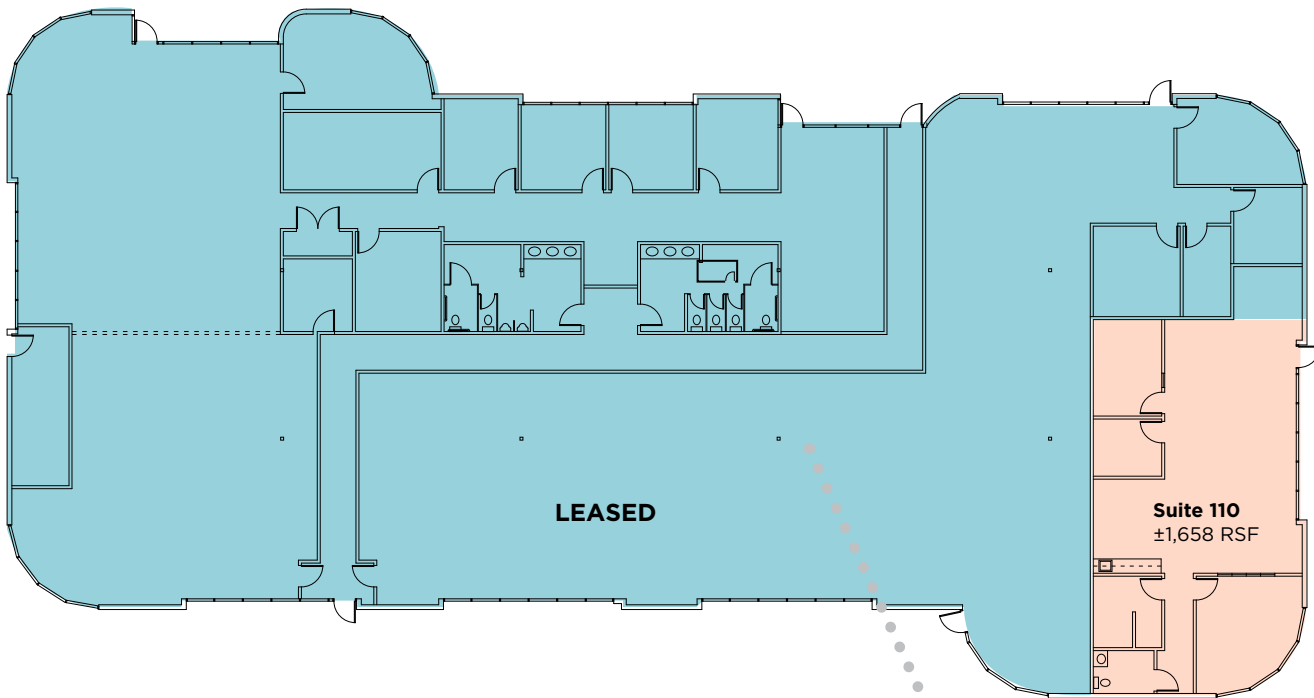
**CUSHMAN &
WAKEFIELD**

FOR LEASE

CAPITAL CORPORATE CENTER

3320 & 3330 DATA DRIVE & 10680 WHITE ROCK RD
RANCHO CORDOVA, CA

10680 WHITE ROCK ROAD



10680 WHITE ROCK SUITE 110 ±1,658 rsf \$1.65-\$1.75 FSG



RON THOMAS, SIOR
Executive Director
+1 916 288 4801
ron.thomas@cushwake.com
LIC #01193241

CHRIS SCHWARZE
Executive Director
+1 916 288 4803
chris.schwarze@cushwake.com
LIC #01291261

ZACH MOSLE, CCIM
Senior Associate
+1 916 329 1543
zach.mosle@cushwake.com
LIC #01924595

400 Capitol Mall, Suite 1800
Sacramento, California 95814
main +1 916 288 4800
cushmanwakefield.com

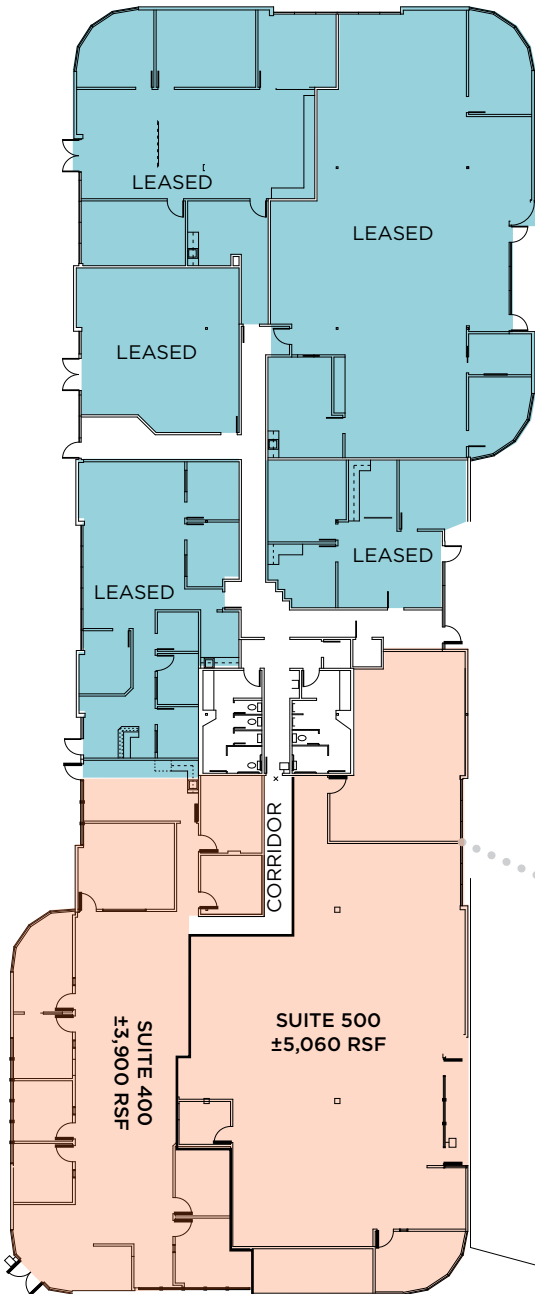


**CUSHMAN &
WAKEFIELD**

FOR LEASE

CAPITAL CORPORATE CENTER

3320 & 3330 DATA DRIVE & 10680 WHITE ROCK RD
RANCHO CORDOVA, CA



3320 DATA DRIVE

3320 DATA	±8,960 rsf Available	
SUITE 400	±3,900 rsf Available*	\$1.65-\$1.75 FSG
SUITE 500	±5,060 rsf Available*	\$1.50 FSG

*Can be combined for a total of ±8,960 SF



RON THOMAS, SIOR
Executive Director
+1 916 288 4801
ron.thomas@cushwake.com
LIC #01193241

CHRIS SCHWARZE
Executive Director
+1 916 288 4803
chris.schwarze@cushwake.com
LIC #01291261

ZACH MOSLE, CCIM
Senior Associate
+1 916 329 1543
zach.mosle@cushwake.com
LIC #01924595

400 Capitol Mall, Suite 1800
Sacramento, California 95814
main +1 916 288 4800
cushmanwakefield.com



**CUSHMAN &
WAKEFIELD**

FOR LEASE

CAPITAL CORPORATE CENTER

3320 & 3330 DATA DRIVE & 10680 WHITE ROCK RD
RANCHO CORDOVA, CA

GALLERY



RON THOMAS, SIOR
Executive Director
+1 916 288 4801
ron.thomas@cushwake.com
LIC #01193241

CHRIS SCHWARZE
Executive Director
+1 916 288 4803
chris.schwarze@cushwake.com
LIC #01291261

ZACH MOSLE, CCIM
Senior Associate
+1 916 329 1543
zach.mosle@cushwake.com
LIC #01924595

400 Capitol Mall, Suite 1800
Sacramento, California 95814
main +1 916 288 4800
cushmanwakefield.com



CUSHMAN & WAKEFIELD

FOR LEASE

CAPITAL CORPORATE CENTER

3320 & 3330 DATA DRIVE & 10680 WHITE ROCK RD
RANCHO CORDOVA, CA

AERIAL



RON THOMAS, SIOR
Executive Director
+1 916 288 4801
ron.thomas@cushwake.com
LIC #01193241

CHRIS SCHWARZE
Executive Director
+1 916 288 4803
chris.schwarze@cushwake.com
LIC #01291261

ZACH MOSLE, CCIM
Senior Associate
+1 916 329 1543
zach.mosle@cushwake.com
LIC #01924595

400 Capitol Mall, Suite 1800
Sacramento, California 95814
main +1 916 288 4800
cushmanwakefield.com