

PRICE DROP!

# DIMOND DISTRICT

## ±2648-SF BUILDING ON ±2936-SF PARCEL PATH-OF-PROGRESS IN RU-5 ZONE REDUCED FROM \$725K TO \$695K

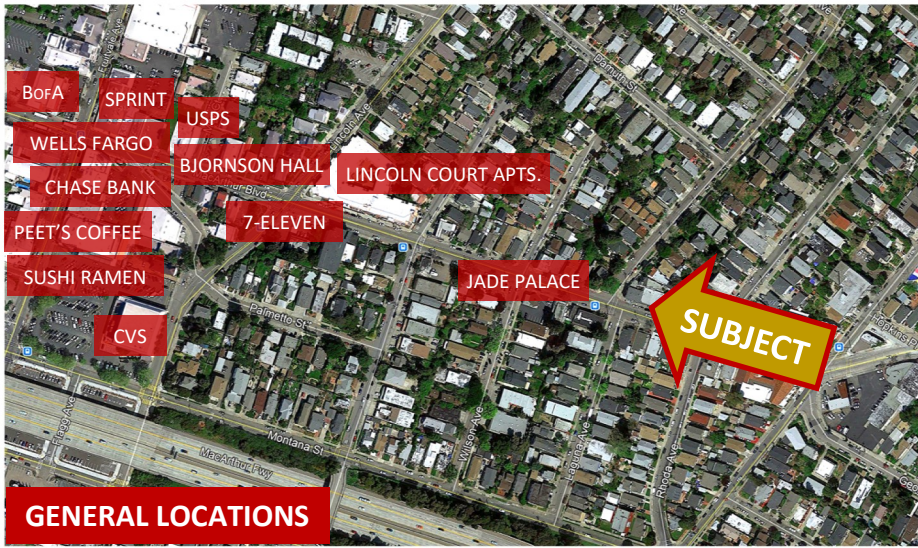


### 2606-2612 MACARTHUR BOULEVARD, OAKLAND, CA 94612



ZONED RU-5

Built in 1927, located at the heart of Oakland's [Dimond District](#) between Fruitvale and Coolidge Avenue, this 3-unit retail building is currently 100% occupied with long-term tenants. Leases are all set to expire at various times within the next 2 years. Ideal for a local investor or owner/user looking to occupy all or a portion of the building. Lease details available upon request.



GENERAL LOCATIONS

The Dimond District, like many of Oakland's historic districts, has seen a revitalization in recent years. This has in turn attracted a mix of both locally-owned businesses and large chains to the immediate vicinity.

[Planning PDF](#): "The RU-5 zone is intended for multi-unit, mid and high-rise residential structures with ground floor neighborhood businesses on major corridors."

Notable nearby retail and eateries include: [Farmer Joe's](#), [Safeway](#), [CVS](#), [Oaklandish](#), [Peet's Coffee](#), [La Farine](#), [Café Umami](#), [The Food Foundry](#), [Flavor Brigade](#), and [more](#).

**PLEASE DO NOT DISTURB TENANTS  
SHOWN BY APPOINTMENT ONLY**

DEMOGRAPHICS

STREET VIEW

SATELLITE

MAP

AREA BUSINESS

Francis Griffin  
510-450-1405  
fgriffin@mrecommercial.com  
CA BRE No: 02016713

**\$695,000**

Erik Housh  
510-450-1410  
ehoush@mrecommercial.com  
CA BRE No: 00884250