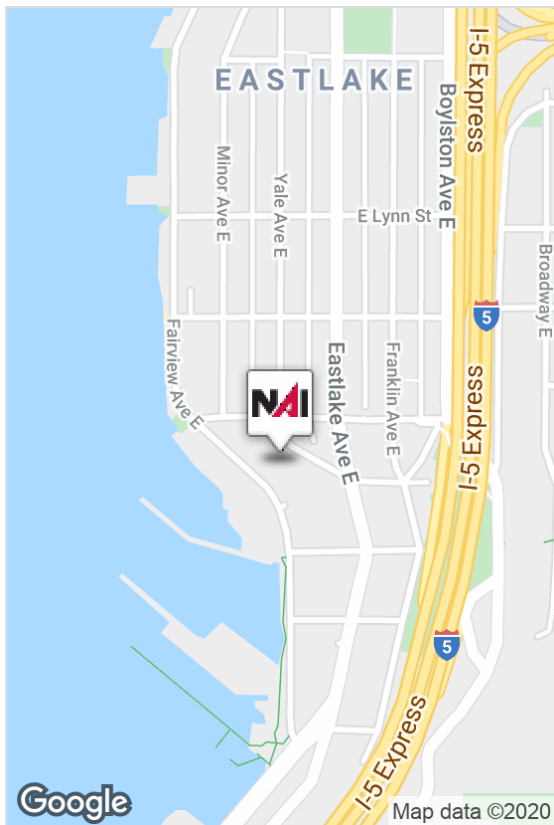


LEED Certified - Silver

For Lease: 6,187 RSF  
Eastlake - Lake Union



## 1910 Fairview Building

1910 Fairview Avenue East, Seattle, WA 98101

- LEED Certified - Silver
- Excellent location and visibility in the Eastlake area of Lake Union
- Easy access to I-5, University of Washington, South Lake Union and Seattle CBD
- Close to Metro Bus routes and walking distance to South Lake Union - Seattle Streetcar
- Men's & women's locker rooms with showers
- Secured bike area(s)
- Storage room available
- Seven (7) parking stalls at \$175/stall/month
- Suite 100 available immediately

For more information:

**John Werdel, CCIM**

+1 206 332 1488 • [jwerdel@nai-psp.com](mailto:jwerdel@nai-psp.com)



BELLEVUE | SEATTLE | TACOMA

1700 Seventh Avenue, Suite 2050

Seattle, WA 98101

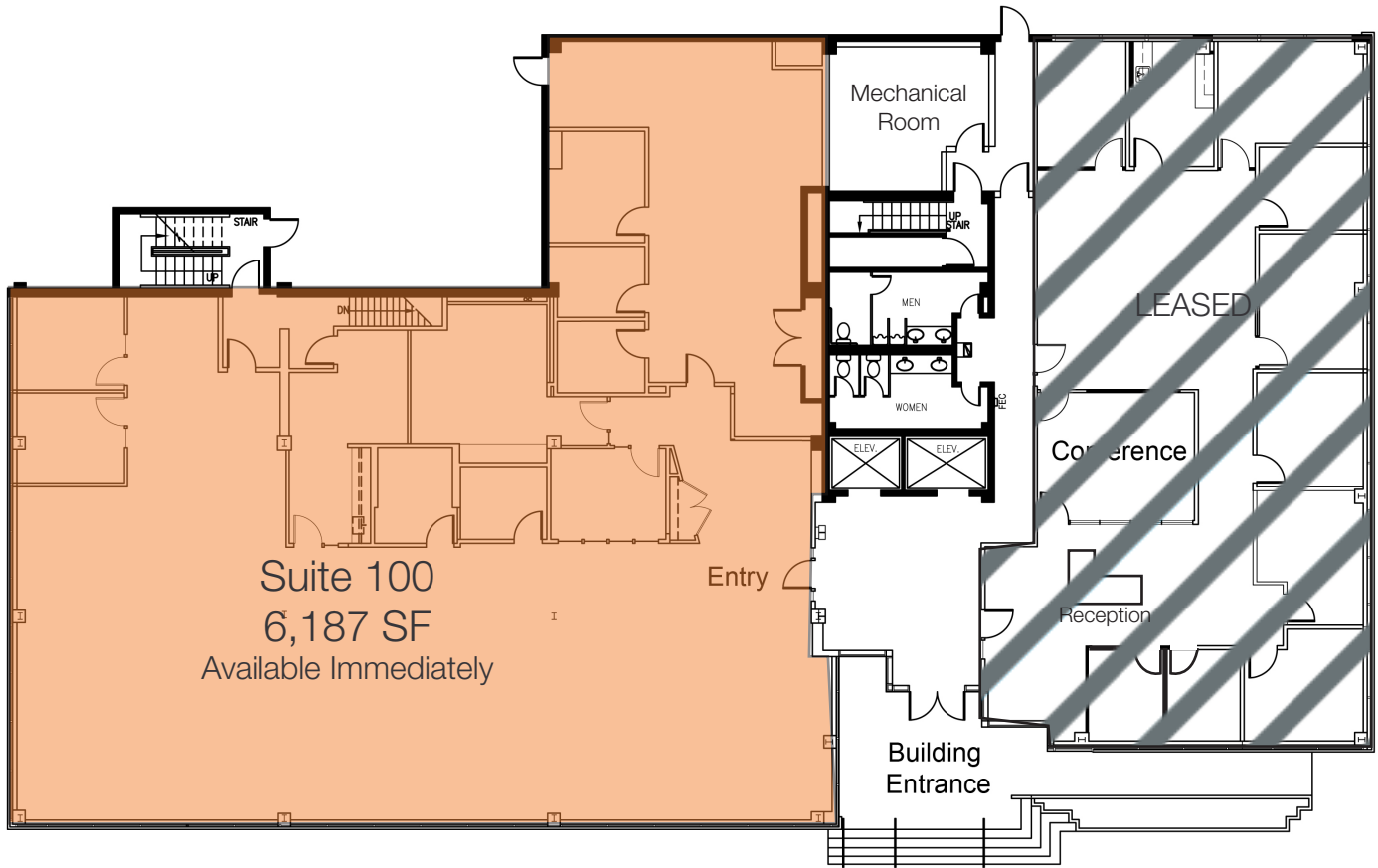
+1 206 332 1466

[nai-psp.com](http://nai-psp.com)

THE INFORMATION CONTAINED HEREIN HAS BEEN GIVEN TO US BY THE OWNER OF THE PROPERTY OR OTHER SOURCES WE DEEM RELIABLE, WE HAVE NO REASON TO DOUBT ITS ACCURACY, BUT WE DO NOT GUARANTEE IT. ALL INFORMATION SHOULD BE VERIFIED PRIOR TO PURCHASE OR LEASE.

Office for Lease

# 1910 Fairview Building



## Available Spaces

Suite	RSF	Rent PSF	Features	Available
Suite 100	6,187	\$38.00, FS	Excellent natural light and window line. Large open area, conference room, private offices, kitchenette. Not Divisible.	Immediately



BELLEVUE | SEATTLE | TACOMA

1700 Seventh Avenue, Suite 2050  
Seattle, WA 98101  
+1 206 332 1466  
[nai-psp.com](http://nai-psp.com)

THE INFORMATION CONTAINED HEREIN HAS BEEN GIVEN TO US BY THE OWNER OF THE PROPERTY OR OTHER SOURCES WE DEEM RELIABLE, WE HAVE NO REASON TO DOUBT ITS ACCURACY, BUT WE DO NOT GUARANTEE IT. ALL INFORMATION SHOULD BE VERIFIED PRIOR TO PURCHASE OR LEASE.