

14441 ROTUNDA DRIVE  
DEARBORN, MICHIGAN

INDUSTRIAL FOR SALE OR LEASE  
43,760 Square Feet Available



**SIGNATURE  
ASSOCIATES**  
KNOW SIGNATURE | KNOW RESULTS

**FORD DIGITAL MARKETING**



## PROPERTY FEATURES

- 43,760 square feet available
- 15'-16' clear ceiling height
- (2) 12 x 14 grade level doors
- Zoned IB, Medium Industrial
- Located on 3.0 plus acres
- 200+ Parking
- Located near I-94, Ford Motor Company World Headquarters, and Ford Rouge Plant
- High efficiency fire suppression system
- Approximately 25 private offices, 2 large conference rooms and large cafeteria
- Price Reduced
- Lease rate: \$5.00/sq. ft. NNN
- Sale Price: \$2,406,800 (\$55.00/sq. ft.)



For more information, please contact:

**JACK TOWNSEND**  
(248) 948 0115  
jtownsend@signatureassociates.com

**SIGNATURE ASSOCIATES**  
One Towne Square, Suite 1200  
Southfield, MI 48076  
www.signatureassociates.com

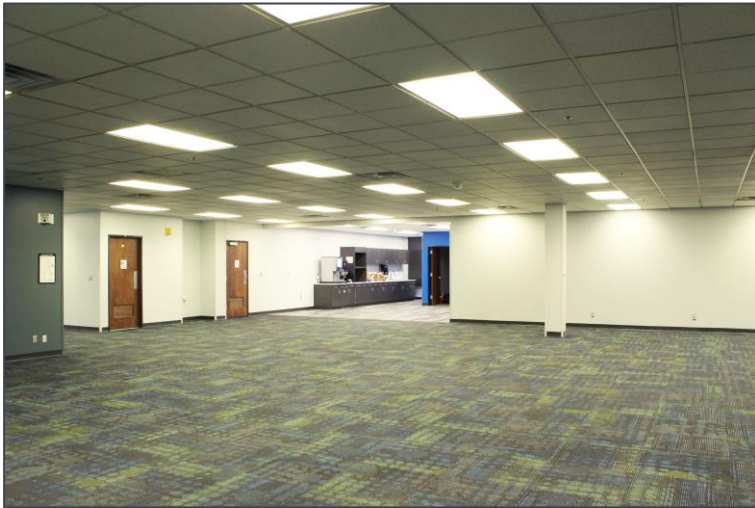


# 14441 Rotunda Drive – Dearborn, Michigan

Industrial For Sale or Lease

43,760  
Square Feet  
AVAILABLE

## Additional Photos



For more information, please contact:

**JACK TOWNSEND**  
(248) 948 0115  
jtownsend@signatureassociates.com

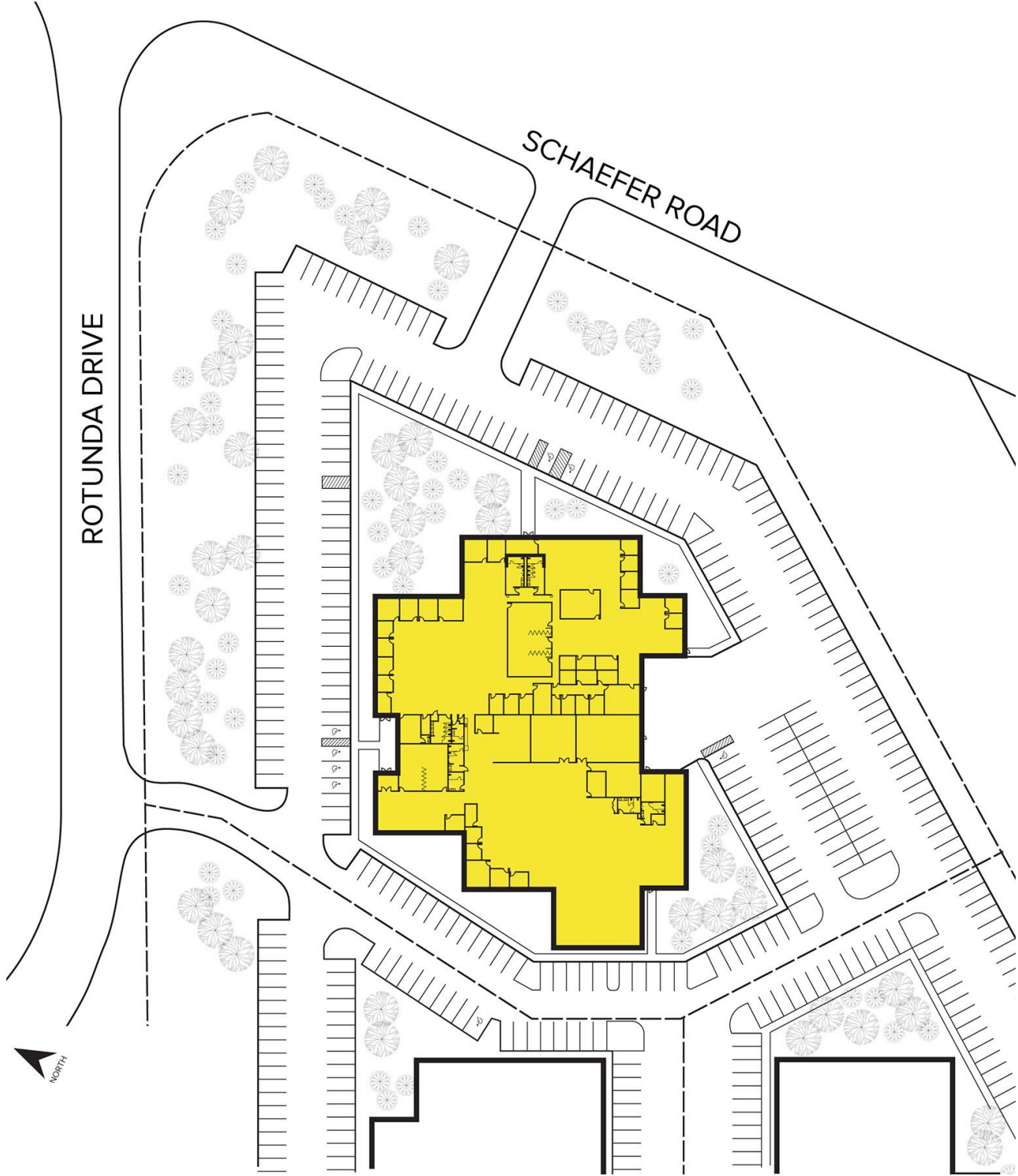
**SIGNATURE ASSOCIATES**  
One Towne Square, Suite 1200  
Southfield, MI 48076  
www.signatureassociates.com

# 14441 Rotunda Drive – Dearborn, Michigan

Industrial For Sale or Lease

43,760  
Square Feet  
AVAILABLE

## Site Plan



For more information, please contact:

**JACK TOWNSEND**  
(248) 948 0115  
jtownsend@signatureassociates.com

**SIGNATURE ASSOCIATES**  
One Towne Square, Suite 1200  
Southfield, MI 48076  
www.signatureassociates.com

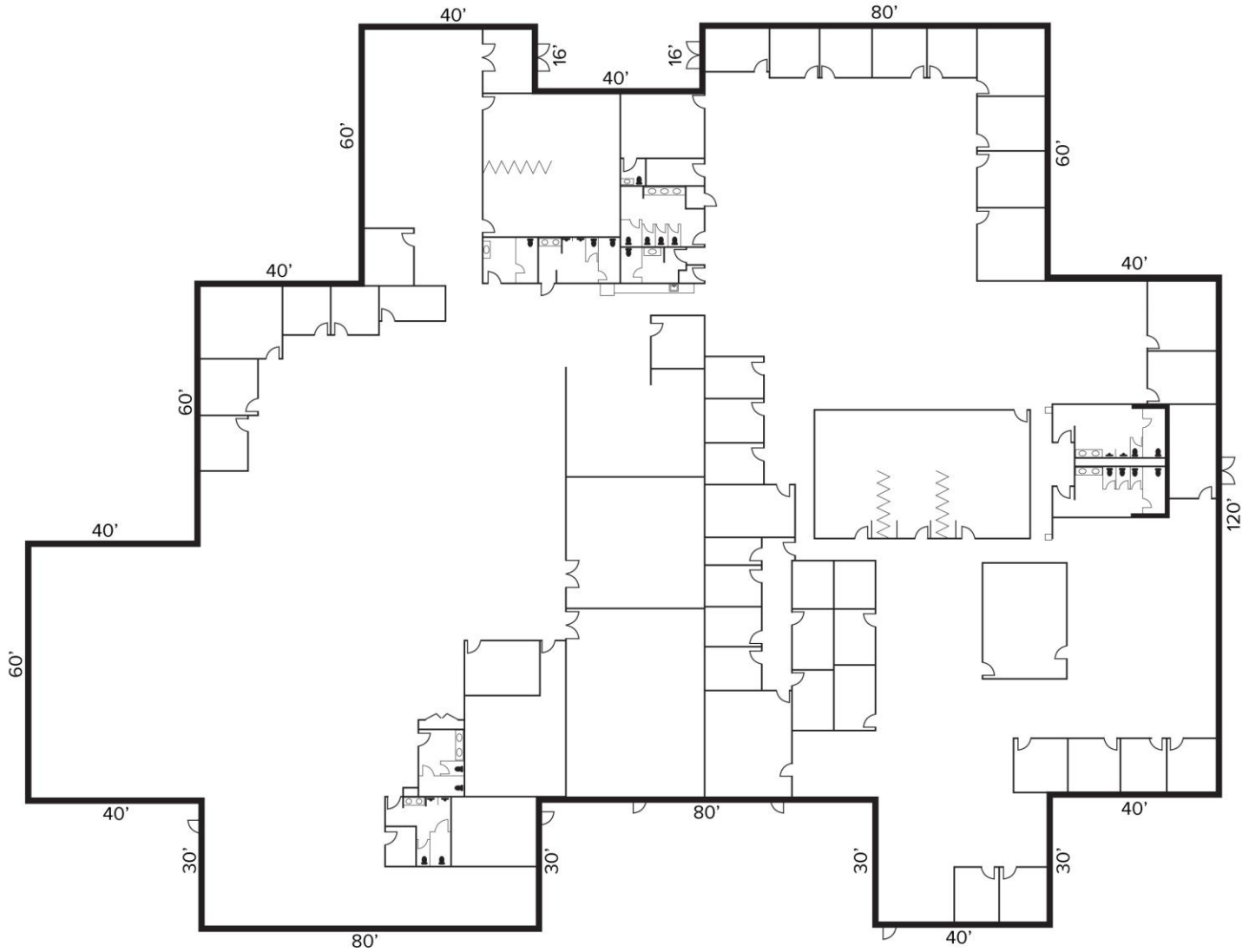
Information is subject to verification and no liability for errors or omissions is assumed. Price is subject to change and listing withdrawal.

# 14441 Rotunda Drive – Dearborn, Michigan

Industrial For Sale or Lease

43,760  
Square Feet  
AVAILABLE

## Floor Plan



For more information, please contact:

**JACK TOWNSEND**  
(248) 948 0115  
jtownsend@signatureassociates.com

**SIGNATURE ASSOCIATES**  
One Towne Square, Suite 1200  
Southfield, MI 48076  
www.signatureassociates.com

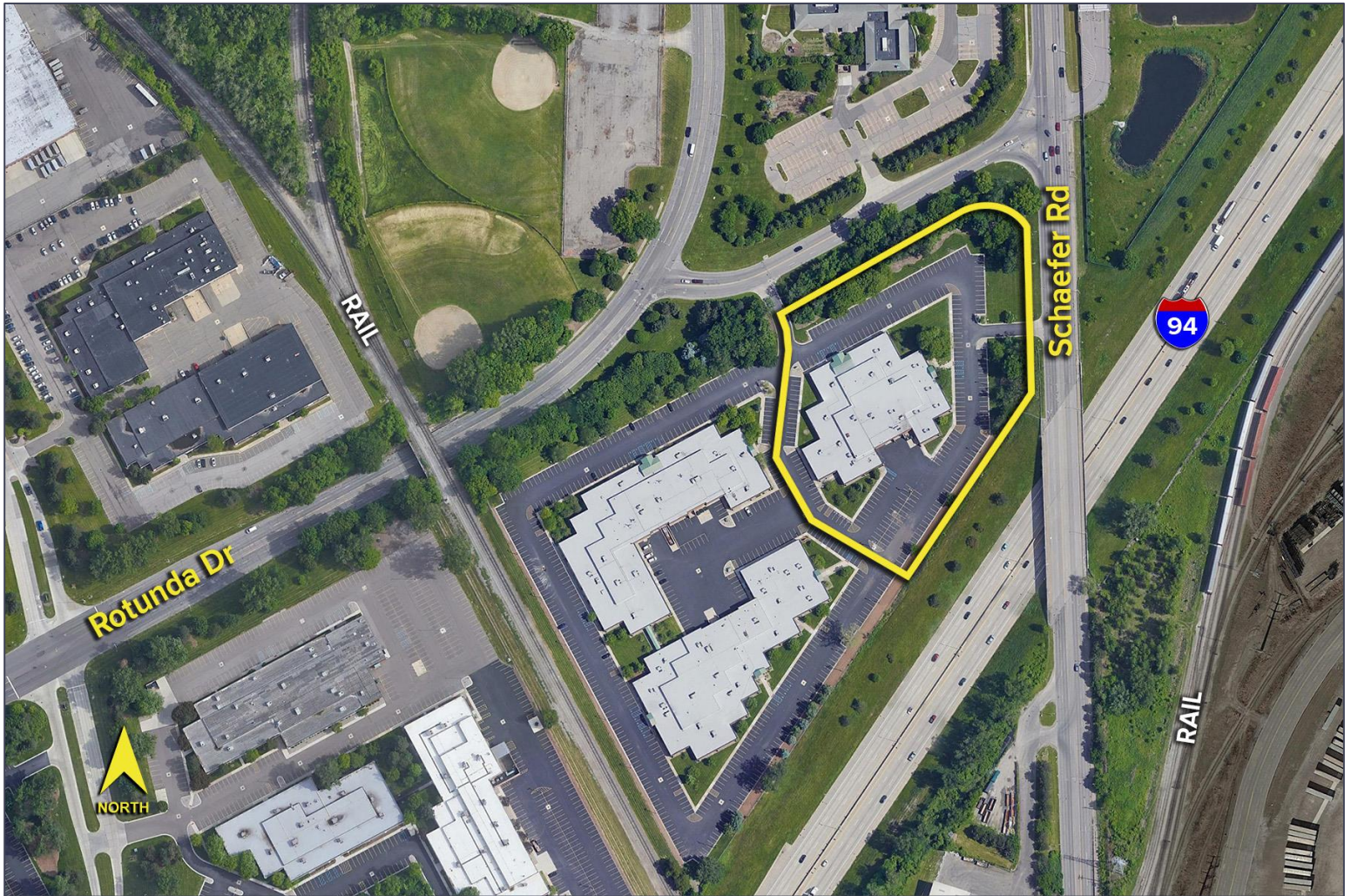


# 14441 Rotunda Drive – Dearborn, Michigan

Industrial For Sale or Lease

43,760  
Square Feet  
AVAILABLE

Aerial



For more information, please contact:

**JACK TOWNSEND**  
(248) 948 0115  
jtownsend@signatureassociates.com

**SIGNATURE ASSOCIATES**  
One Towne Square, Suite 1200  
Southfield, MI 48076  
www.signatureassociates.com