

36-12 MAIN STREET



SPACE DETAILS

LOCATION

West block between Northern Boulevard and 37th Avenue

APPROXIMATE SIZE

Ground Floor	3,400 SF
Lower Level	3,490 SF
Total	6,890 SF

FRONTAGE

20 FT on Main Street

CEILING HEIGHT

Ground Floor	12 FT
Lower Level	8 FT 9 IN

POSSESSION

Immediate

SITE STATUS

Formerly International Furniture Co.

NEIGHBORS

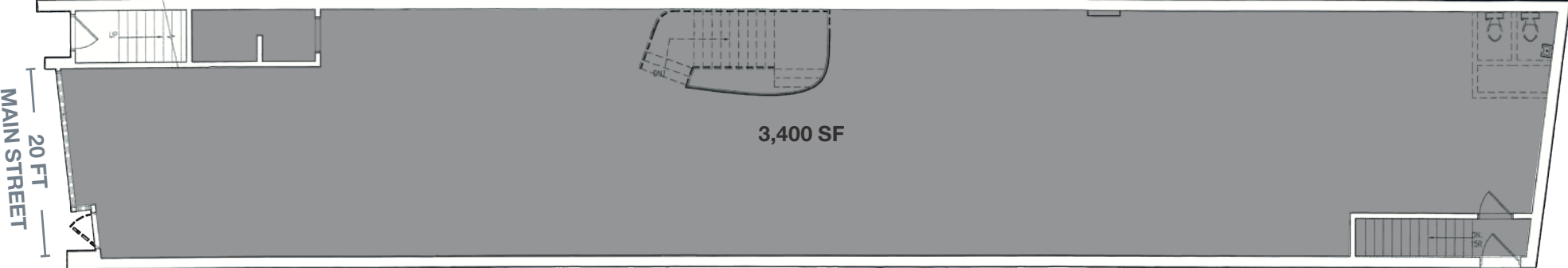
Target, BJ's Wholesale Club, Chase, Citibank, Capital One, TD Bank, HSBC Bank, Bank of America, Macy's, Paris Baguette, Starbucks, Tous Les Jours, Mattress Firm and Regal Cinema (coming soon)

COMMENTS

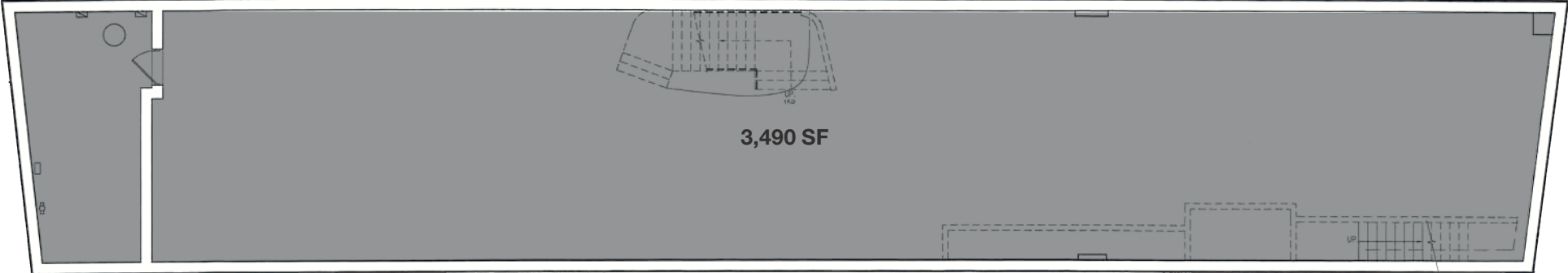
Flushing has a population of 112,603 and a daytime population of 97,645 within 1-mile

Adjacent to the new 14-story commercial development that connects to the 12-story Hotel Indigo

GROUND FLOOR



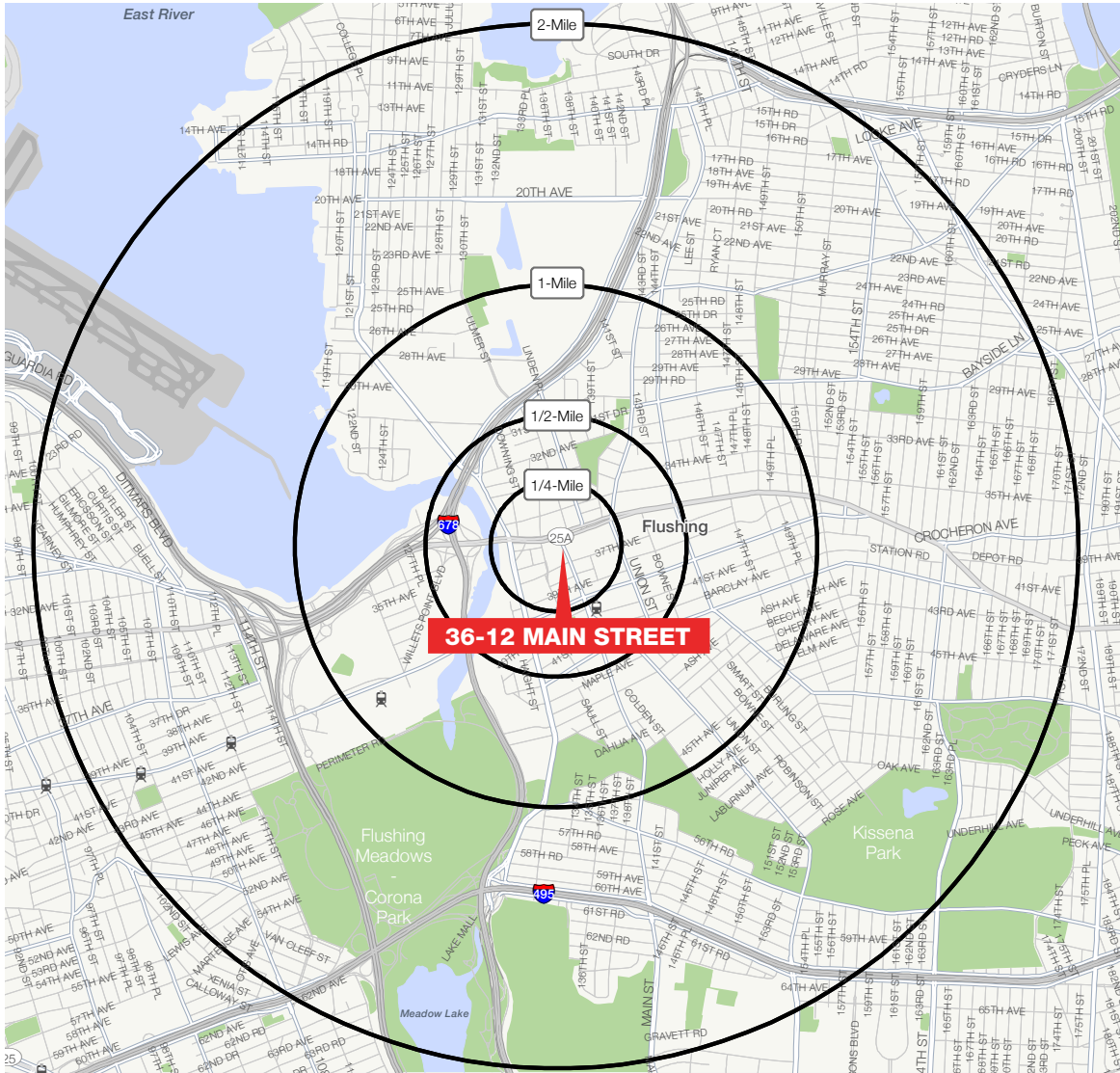
LOWER LEVEL



AREA NEIGHBORS



AREA DEMOGRAPHICS



ESTIMATED DAYTIME POPULATION

1/4 mile	12,501
1/2 mile	39,431
1 mile	97,645
2 miles	238,453

AVERAGE HOUSEHOLD INCOME

1/4 mile	\$68,049
1/2 mile	\$58,137
1 mile	\$65,095
2 miles	\$74,285

TOTAL HOUSEHOLDS

1/4 mile	1,304
1/2 mile	31,782
1 mile	112,603
2 miles	309,929

AVERAGE HOUSEHOLD EXPENDITURE ON FOOD AT RESTAURANTS

1/4 mile	\$6,937
1/2 mile	\$5,989
1 mile	\$6,635
2 miles	\$7,650

2018 numbers

CONTACT EXCLUSIVE AGENTS

BARRY FISHBACH
212.331.0115
barry.fishbach@ngkf.com

YOUNG KIM
212.351.9355
young.kim@ngkf.com



NGKF.COM