

# Publix #0887 - Southwood Village

3551 Blair Stone Road  
Tallahassee, FL 32301  
Lat 30.403, Long -84.237

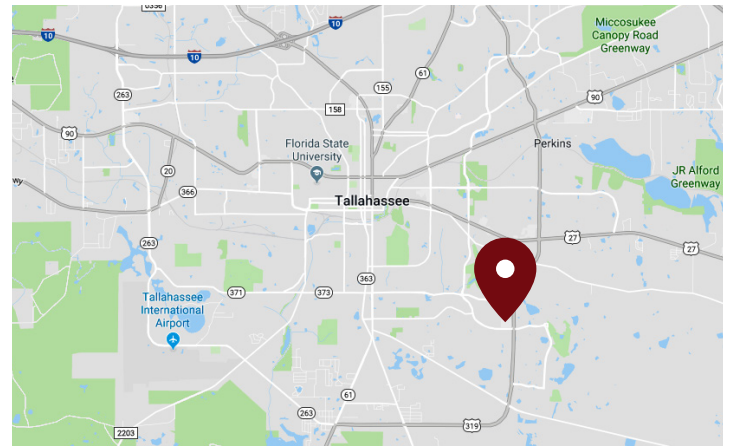
FOR LEASE



1,200 SF AVAILABLE

## PROPERTY HIGHLIGHTS

- Publix-Anchored
- Located in Leon County at Capital Circle and Blair Stone Road
- Serves the Growing Residential Communities of Southeast Tallahassee
- The Center Features a Large Daytime Population due to the Close Proximity to the Capital Circle Office Complex
- Strong Tenant Mix
- Traffic Count: 43,600 VPD



DEMOGRAPHICS	1 Mile	3 Miles	5 Miles
Total Population	4,062	40,489	103,546
Daytime Population	4,926	45,613	132,664
Total Households	1,706	17,161	41,211
Avg. HH Income	\$105,424	\$70,169	\$66,144

Data provided by Placer Labs Inc. (www.placer.ai) & Esri

## Jamie Golomb

334.590.4332 | [jgolomb@crossmanco.com](mailto:jgolomb@crossmanco.com)  
6400 Powers Ferry Road, Suite 300, Atlanta, GA

Licensed Real Estate Broker. No warranty expressed or implied has been made to the accuracy of the information provided herein, no liability assumed for error or omission.



Crossman & Company

[www.crossmanco.com](http://www.crossmanco.com)

# Publix #0887 - Southwood Village

3551 Blair Stone Road  
Tallahassee, FL 32301  
Lat 30.403, Long -84.237

## SITE PLAN



Suite	Tenant	Size
15	Publix	44,840
1	Yasou Café	2,400
3	Copyright Copies	1,200
4	Coco Nails	1,200
5	H&R Block	1,200
6	China Wok	1,200
7	Hungry Howie's	1,200
8	Midtown Dry Cleaners	1,200
16	Cuts By Us	1,200
17	Publix Liquor	1,500
18	Florida Wing Factory	2,100
20	The UPS Store	1,200
21	AVAILABLE	1,200
22	Hasu Express	1,200
OP-A	Wendy's	N/A

TOTAL 62,840



### Jamie Golomb

334.590.4332 | [jgolomb@crossmanco.com](mailto:jgolomb@crossmanco.com)  
6400 Powers Ferry Road, Suite 300, Atlanta, GA

Licensed Real Estate Broker. No warranty expressed or implied has been made to the accuracy of the information provided herein, no liability assumed for error or omission.



[www.crossmanco.com](http://www.crossmanco.com)



# Publix #0887 - Southwood Village

3551 Blair Stone Road  
Tallahassee, FL 32301  
Lat 30.403, Long -84.237

## FOOT TRAFFIC OVERVIEW

EST. # OF CUSTOMERS ANNUALLY

 **168,000**

EST. # OF VISITS ANNUALLY

 **1.2M**

AVG. VISITS / CUSTOMER

 **7.24**

AVG. LENGTH-OF-STAY / VISIT

 **43 MIN**

TOP 3 DAYS



Saturday	192,764
Sunday	186,818
Friday	182,567

# OF VISITS

TOP 3 HOURS

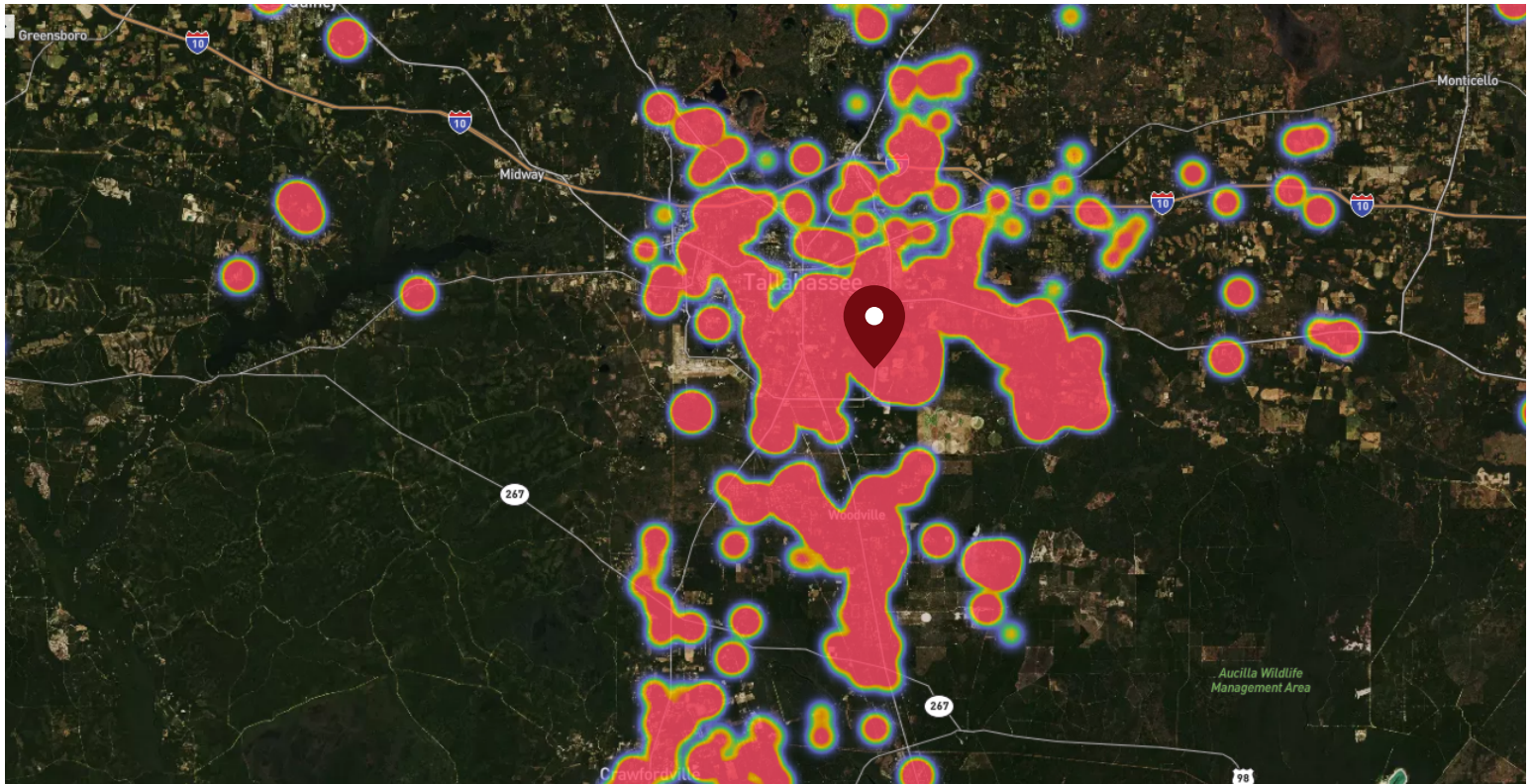


5-6 PM	234,412
4-5 PM	216,843
6-7 PM	209,686

# OF VISITS

Data provided by Placer Labs Inc. (www.placer.ai) Oct 1, 2019 - Sept 30, 2020

## SITE VISIT DENSITY



Red, orange, and yellow colors represent the location of 60% of site visitors

Data provided by Placer Labs Inc. (www.placer.ai)

**Jamie Golomb**

334.590.4332 | [jgolomb@crossmanco.com](mailto:jgolomb@crossmanco.com)

6400 Powers Ferry Road, Suite 300, Atlanta, GA

Licensed Real Estate Broker. No warranty expressed or implied has been made to the accuracy of the information provided herein, no liability assumed for error or omission.



[www.crossmanco.com](http://www.crossmanco.com)