

±20 ACRE FARM FOR SALE

YUMA COUNTY, ARIZONA



LOCATION The property is located ½ mile west of Ave 40e and Old Hwy 80 in Tacna, Arizona

PRICE \$320,000

TERMS Cash

SIZE ±20 gross acres

WBA ±20.1 WMIDD water buy acres

ZONING RA-10

COMMENTS

- Located in the vibrant agriculture community of Yuma County.
- Year-round production with strong and secure water rights. Typical crops grown in the area are winter leafy produce, citrus, industrial hemp, alfalfa, dates, cotton, wheat and other specialty crops.
- Farm is flood irrigated by water that is delivered by the Wellton-Mohawk Irrigation and Drainage District.
- Currently planted to Alfalfa which was planted in September 2019.
- ±4 acres of this farm are fenced in for raising cattle.
- Owner operated
- [Click here to view the soil report.](#)

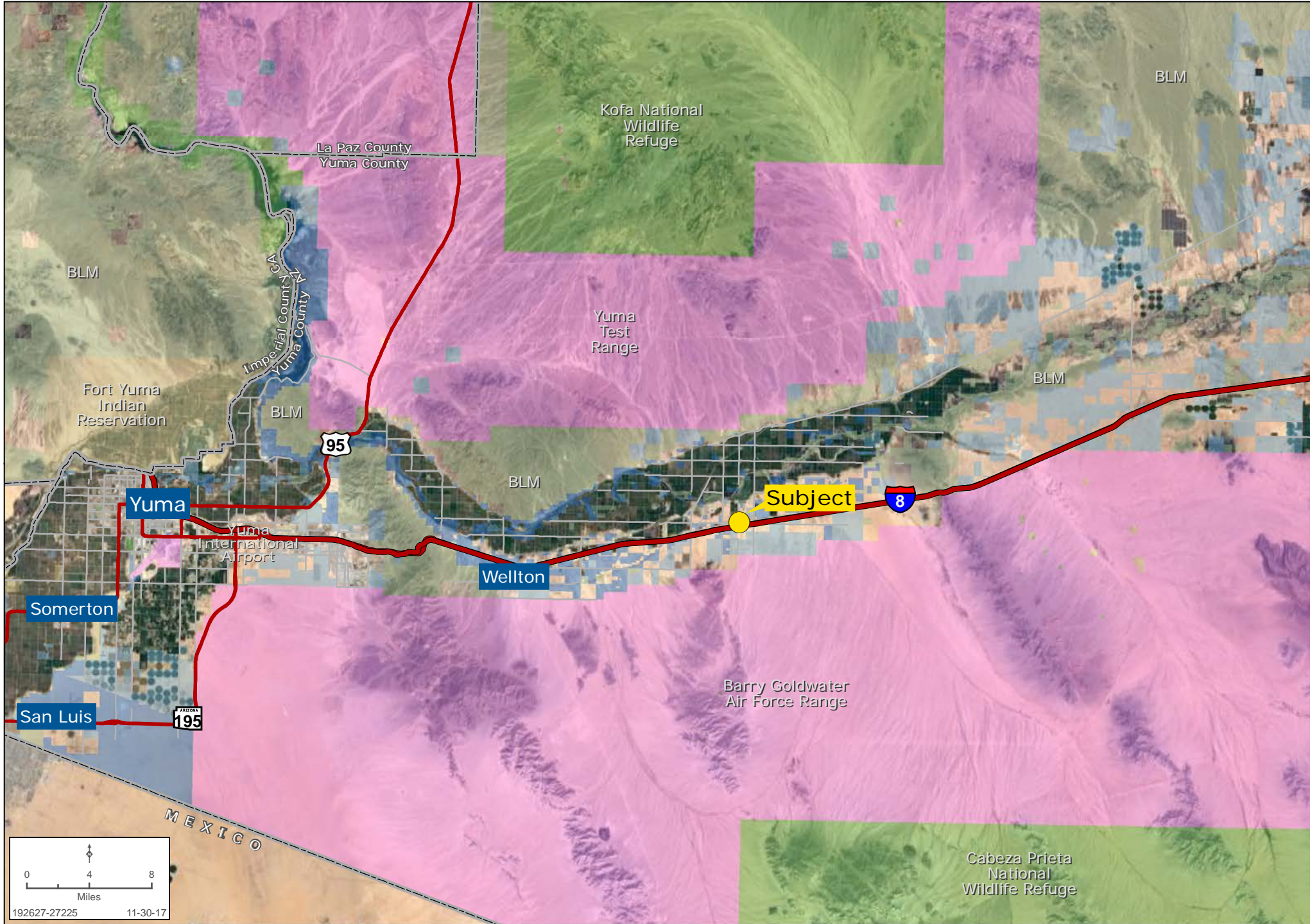
Bobby Wuertz | bwuertz@landadvisors.com

4900 North Scottsdale Road, Suite 3000, Scottsdale, Arizona 85251 ph. 480.483.8100 | www.landadvisors.com

The information contained herein is from sources deemed reliable. We have no reason to doubt its accuracy but do not guarantee it. It is the responsibility of the person reviewing this information to independently verify it. This package is subject to change, prior sale or complete withdrawal. AZYuma192627 - 9.13.19

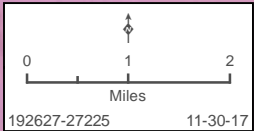
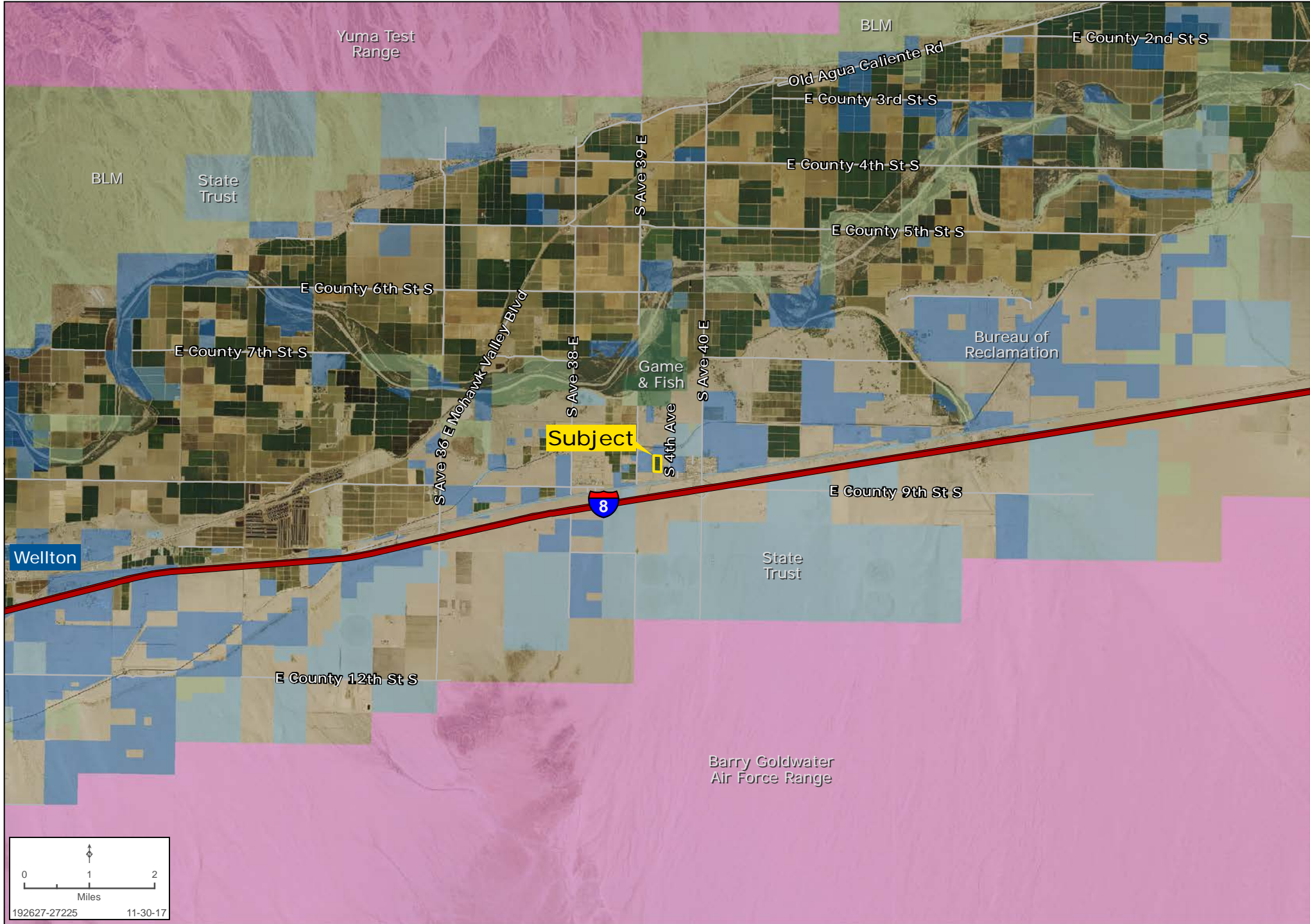
REGIONAL MAP

Bobby Wuertz | 480.483.8100 | www.landadvisors.com



SURROUNDING AREA MAP

Bobby Wuertz | 480.483.8100 | www.landadvisors.com



PROPERTY DETAIL MAP

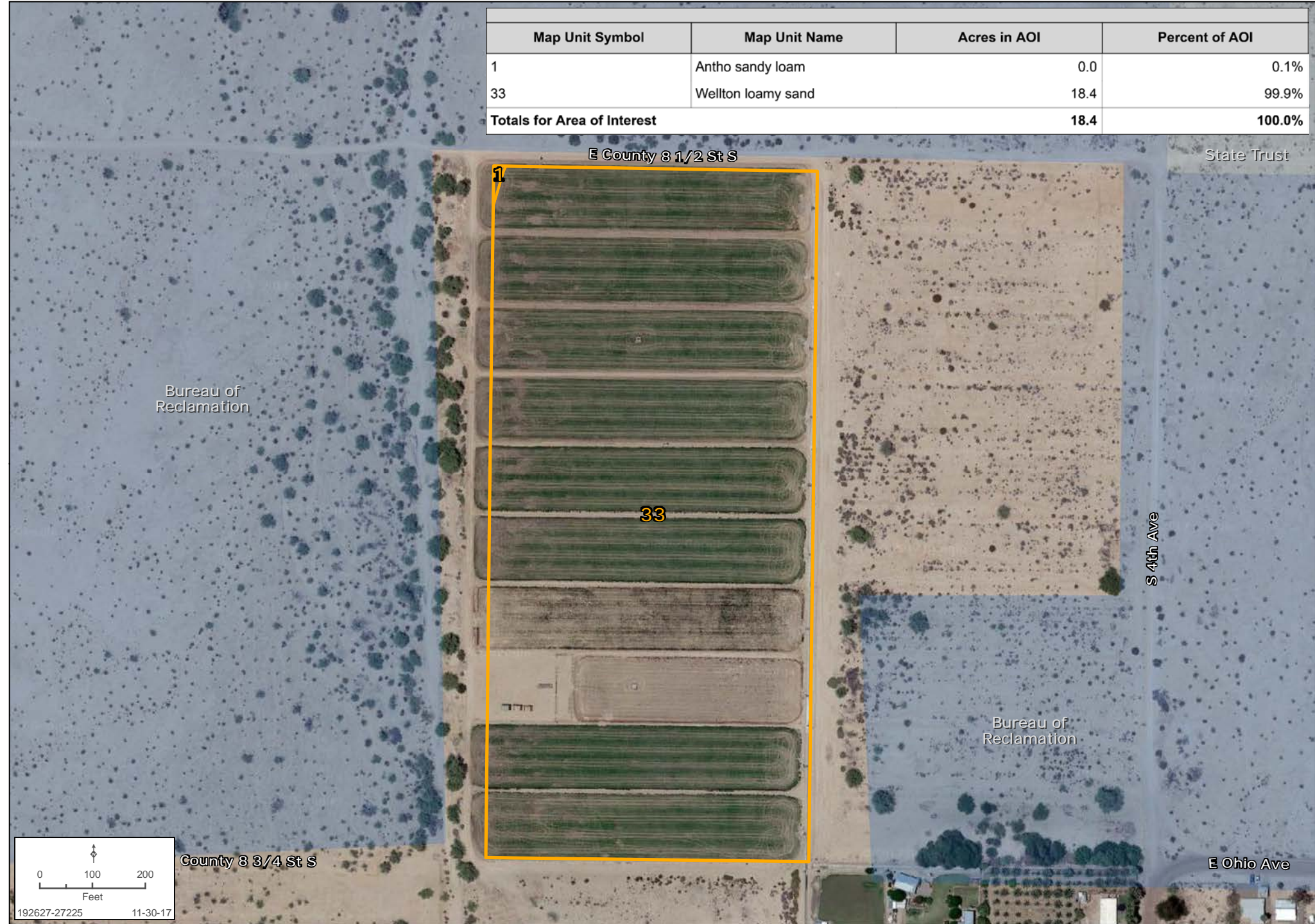
Bobby Wuertz | 480.483.8100 | www.landadvisors.com



SOIL MAP

Bobby Wuertz | 480.483.8100 | www.landadvisors.com

Map Unit Symbol	Map Unit Name	Acres in AOI	Percent of AOI
1	Antho sandy loam	0.0	0.1%
33	Wellton loamy sand	18.4	99.9%
Totals for Area of Interest		18.4	100.0%



PROPERTY PHOTOS

