



FOR LEASE

Plattsmouth Healthcare Building 1504 S. 15th Street / Plattsmouth, NE



1,500 SF Medical Office Building Lease Rate: \$16.00 PSF NNN

Physicians, find success in this immediately available medical office space. Plattsmouth wants more healthcare providers and this is your chance to grow your practice. This space is ready to be completed to your specifications. Exam rooms come fully furnished with tables, otoscopes, ophthalmoscopes, blood pressure devices and supply cabinets. Located just south of Downtown Plattsmouth at the corner of Highway 34 and South 15th Street. Call agents for more details.

Dave Roberts
Associate
402 548 4013
droberts@lundco.com

Spencer Secor
Associate
(402) 548 4069
ssecor@lundco.com

450 Regency Parkway, Suite 200
Omaha, NE 68114
+1 402 393 8811
lundco.com

Independently Owned and Operated / A Member of the Cushman & Wakefield Alliance

Cushman & Wakefield Copyright 2018. No warranty or representation, express or implied, is made to the accuracy or completeness of the information contained herein, and same is submitted subject to errors, omissions, change of price, rental or other conditions, withdrawal without notice, and to any special listing conditions imposed by the property owner(s). As applicable, we make no representation as to the condition of the property (or properties) in question.



FOR LEASE

Plattsmouth Healthcare Building

1504 S. 15th Street / Plattsmouth, NE



Availability

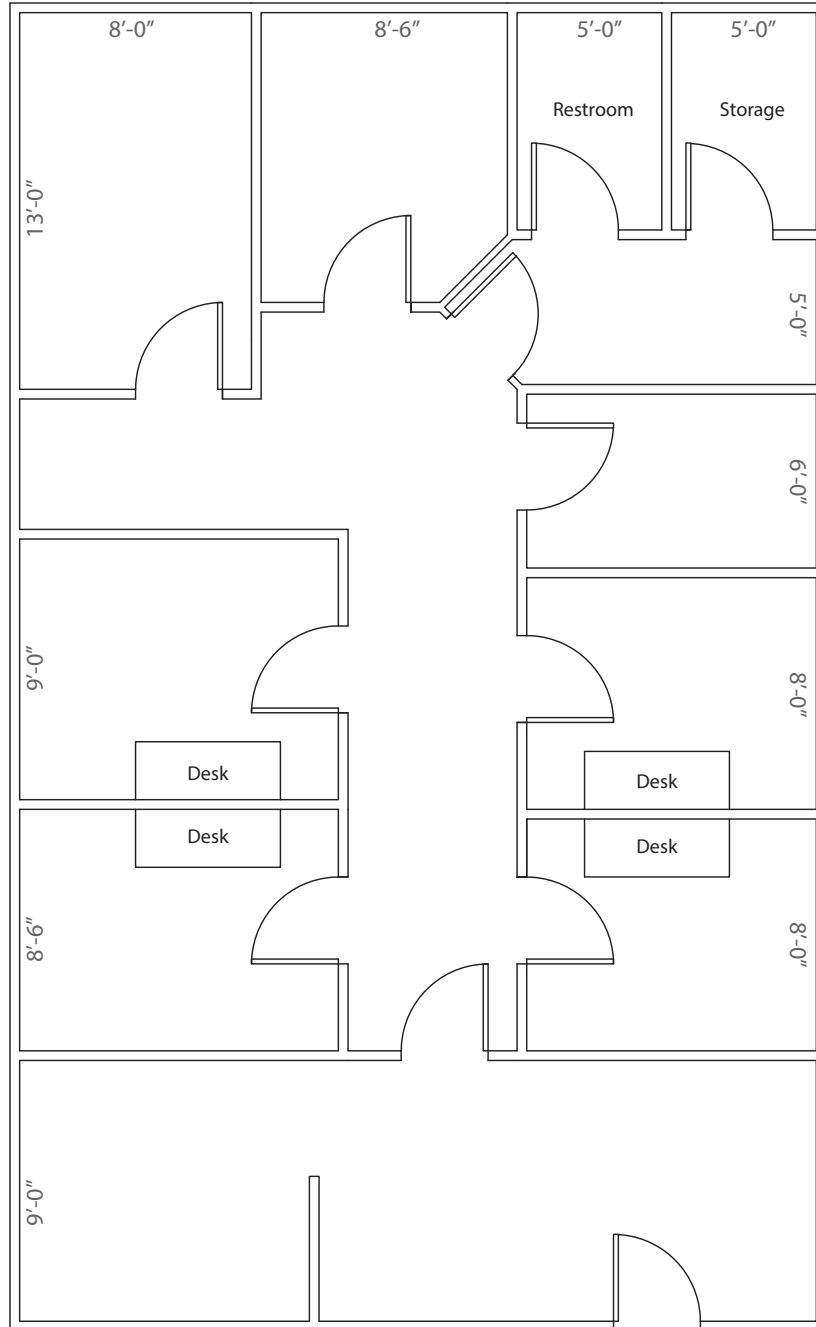
| | |
|------------------|----------------|
| Lease Rate | \$16.00 SF NNN |
| Total Available | 1,500 SF |
| Building Size | 3,000 SF |
| Year Renovated | 2017 |
| Number of Floors | 1 |
| Total Site Area | 16,000 SF |
| Parking | 11.0:1,000 SF |



Independently Owned and Operated / A Member of the Cushman & Wakefield Alliance

Cushman & Wakefield Copyright 2018. No warranty or representation, express or implied, is made to the accuracy or completeness of the information contained herein, and same is submitted subject to errors, omissions, change of price, rental or other conditions, withdrawal without notice, and to any special listing conditions imposed by the property owner(s). As applicable, we make no representation as to the condition of the property (or properties) in question.

Floor Plan

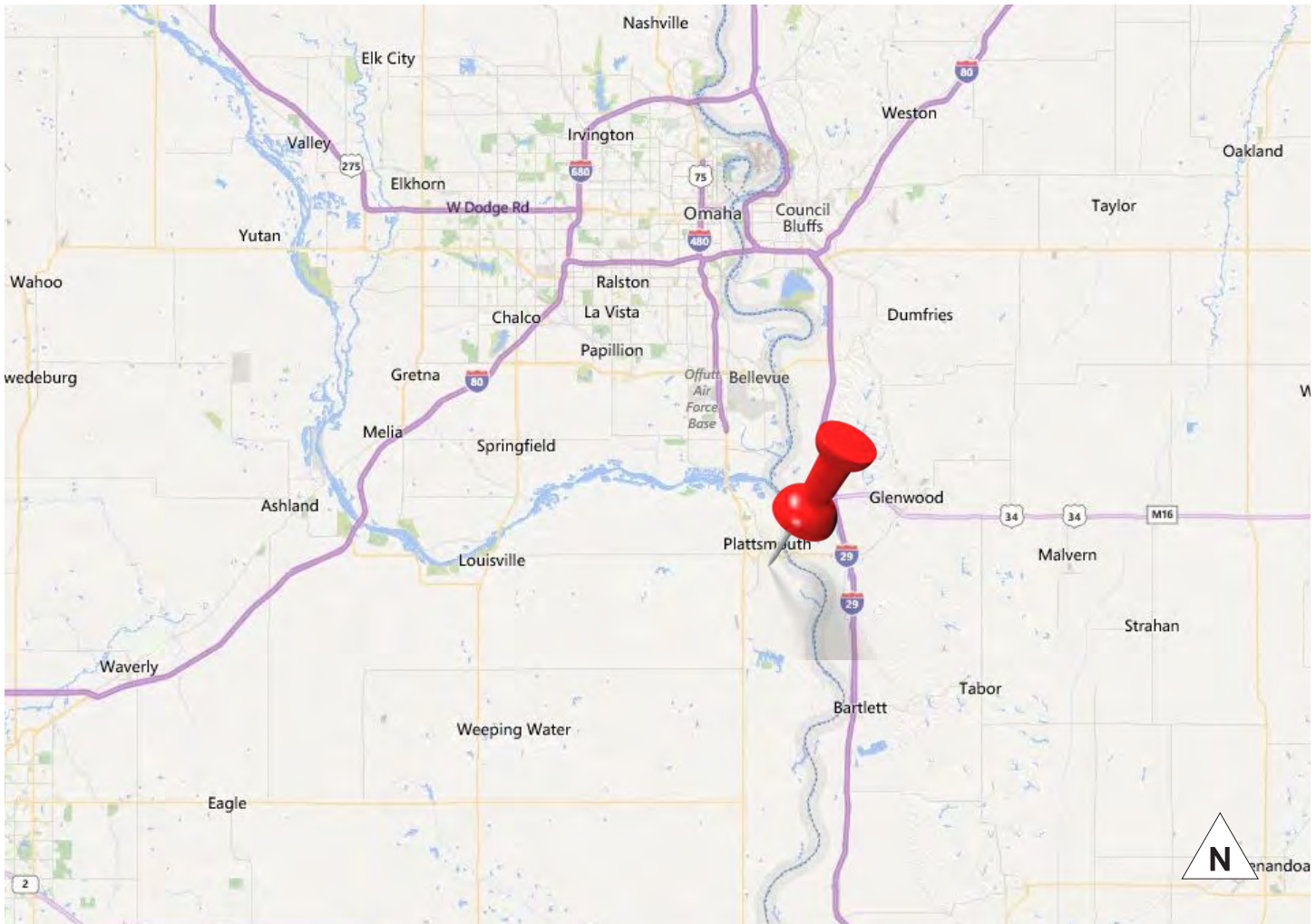


** Floor plan measurements are approximate and are for illustration purposes only.

Independently Owned and Operated / A Member of the Cushman & Wakefield Alliance

Cushman & Wakefield Copyright 2018. No warranty or representation, express or implied, is made to the accuracy or completeness of the information contained herein, and same is submitted subject to errors, omissions, change of price, rental or other conditions, withdrawal without notice, and to any special listing conditions imposed by the property owner(s). As applicable, we make no representation as to the condition of the property (or properties) in question.

Heading



Demographics

| | Population | Median HH Income | No. of Households |
|--------|------------|------------------|-------------------|
| 1-mile | 4,251 | \$59,110 | 1,591 |
| 3-mile | 7,695 | \$58,615 | 2,979 |
| 5-mile | 9,888 | \$62,207 | 3,784 |

Independently Owned and Operated / A Member of the Cushman & Wakefield Alliance

Cushman & Wakefield Copyright 2018. No warranty or representation, express or implied, is made to the accuracy or completeness of the information contained herein, and same is submitted subject to errors, omissions, change of price, rental or other conditions, withdrawal without notice, and to any special listing conditions imposed by the property owner(s). As applicable, we make no representation as to the condition of the property (or properties) in question.