



# San Tan Corporate Center I & II



3100-3200 W RAY RD, CHANDLER, ARIZONA

**CBRE**

CLASS A OFFICE SPACE FOR LEASE



## BUILDING FEATURES



Two 3-story office buildings totaling  $\pm 266,531$  RSF



4.7/1,000 parking ratio



On-site property manager



Conference facility



Prominent building signage available



Freeway visibility



On-site food service and numerous restaurants nearby



Excellent ingress & egress from Loop 101 & Ray Road with a full diamond interchange

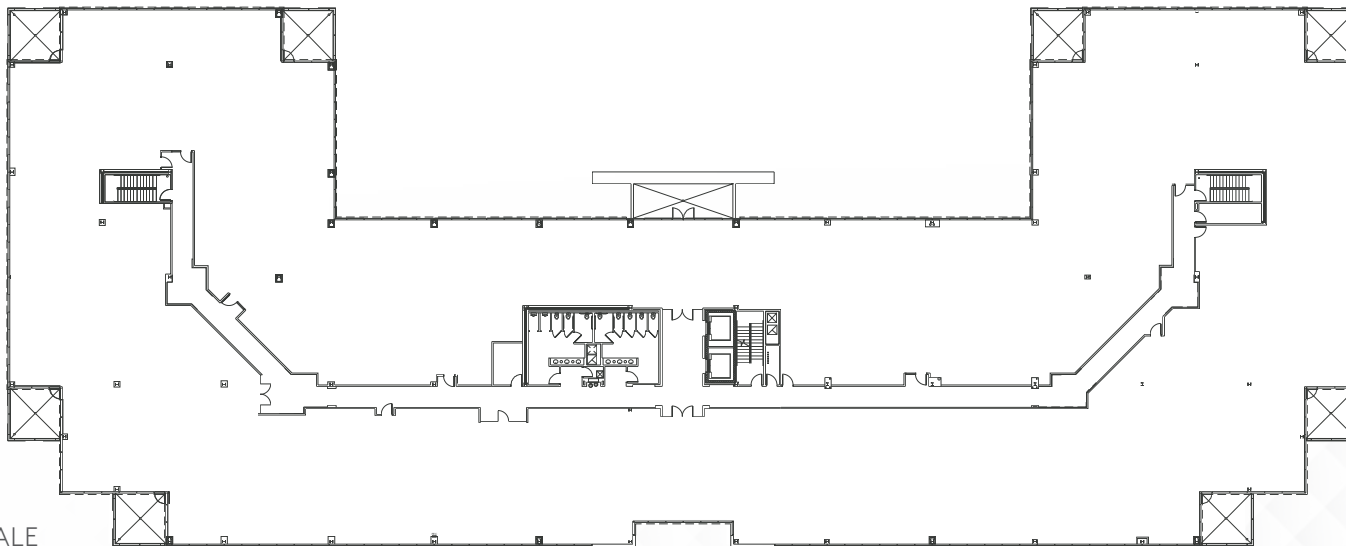


$\pm 1$  mile from Chandler Fashion Center

NOT TO SCALE



# CLASS A OFFICE SPACE FOR LEASE



**TYPICAL FLOOR PLATE**

±43,800 RSF



NOT TO SCALE



Class A Finishes



On-site Deli



EV Charging



Outdoor Courtyard



# AMENITY RICH AREA



NOT TO SCALE

# #2

2018 BEST PLACES TO LIVE  
IN ARIZONA

Niche.com

# #10

2019 BEST PLACE TO FIND  
A JOB

Wallethub.com

# #2

2018 BEST CITY TO BUY A  
FAMILY HOME

Wallethub.com

# #12

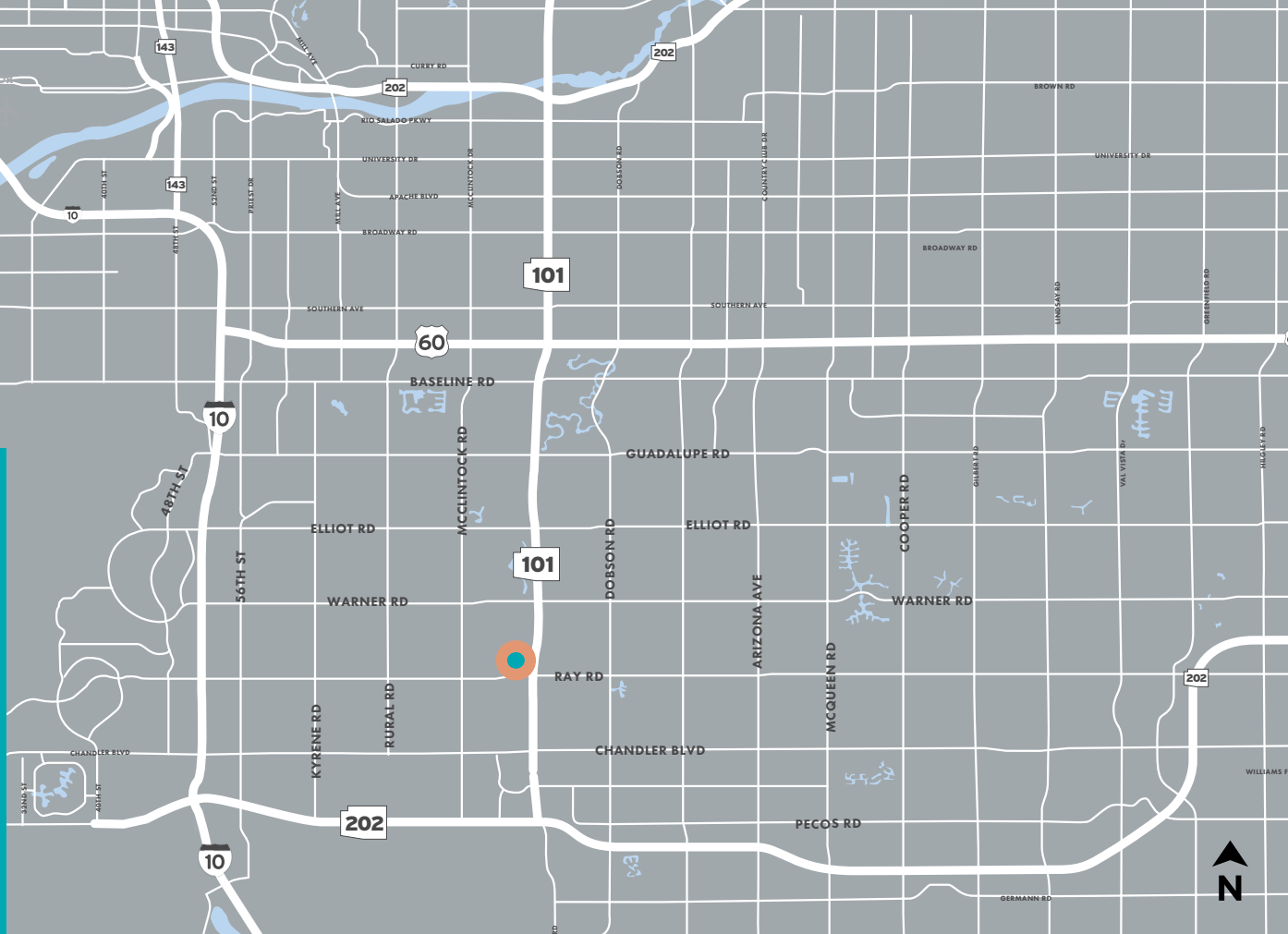
2018 SAFEST CITIES IN THE U.S.

Wallethub.com

# #13

2018 BEST CITIES FOR  
WOMEN IN TEFCH

SmartAsset.com



NOT TO SCALE

M t W t F S s





# San Tan Corporate Center I & II



**CBRE**

**FOR LEASING INFORMATION, PLEASE CONTACT:**

COREY HAWLEY  
+1 602 735 1742  
[corey.hawley@cbre.com](mailto:corey.hawley@cbre.com)

JIMMY CORNISH  
+1 602 735 1741  
[jimmy.cornish@cbre.com](mailto:jimmy.cornish@cbre.com)

SEAN SPELLMAN  
+1 602 735 5615  
[sean.spellman@cbre.com](mailto:sean.spellman@cbre.com)

© 2020 CBRE, Inc. All rights reserved. This information has been obtained from sources believed reliable, but has not been verified for accuracy or completeness. You should conduct a careful, independent investigation of the property and verify all information. Any reliance on this information is solely at your own risk. CBRE and the CBRE logo are service marks of CBRE, Inc. All other marks displayed on this document are the property of their respective owners. Photos herein are the property of their respective owners. Use of these images without the express written consent of the owner is prohibited.