

Property Highlights

- Located in an Opportunity Zone
- M-2 Zoning (General Industrial)
- New ownership and master planned industrial park
- Potential for outside storage
- Infill location with multiple access points to Interstate 35
- Utilities are to the sites in Phase I
- No special assessments
- Master resolution allowing 50%, 10 year tax abatement
- Preliminary and final plan approved for Phase I
- Build-to-suit opportunities

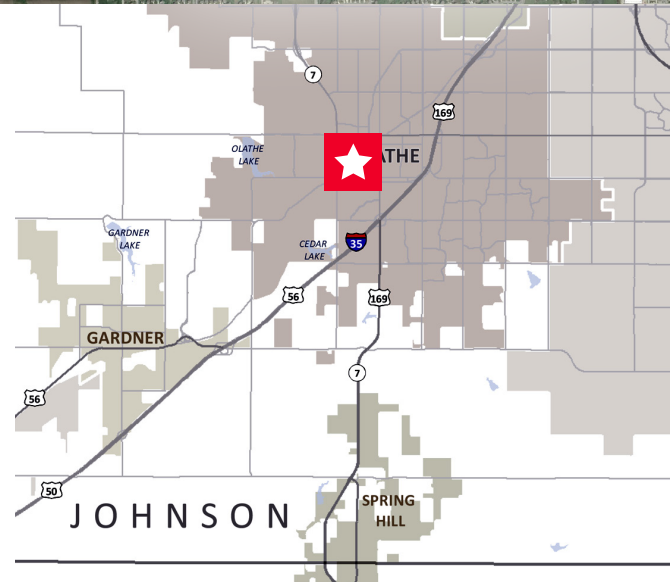
Robert M. Holland, CCIM

Director

Direct +1 816 412 0214

Mobile +1 913 424 4249

rob.holland@cushwake.com



4600 Madison Avenue, Suite 800

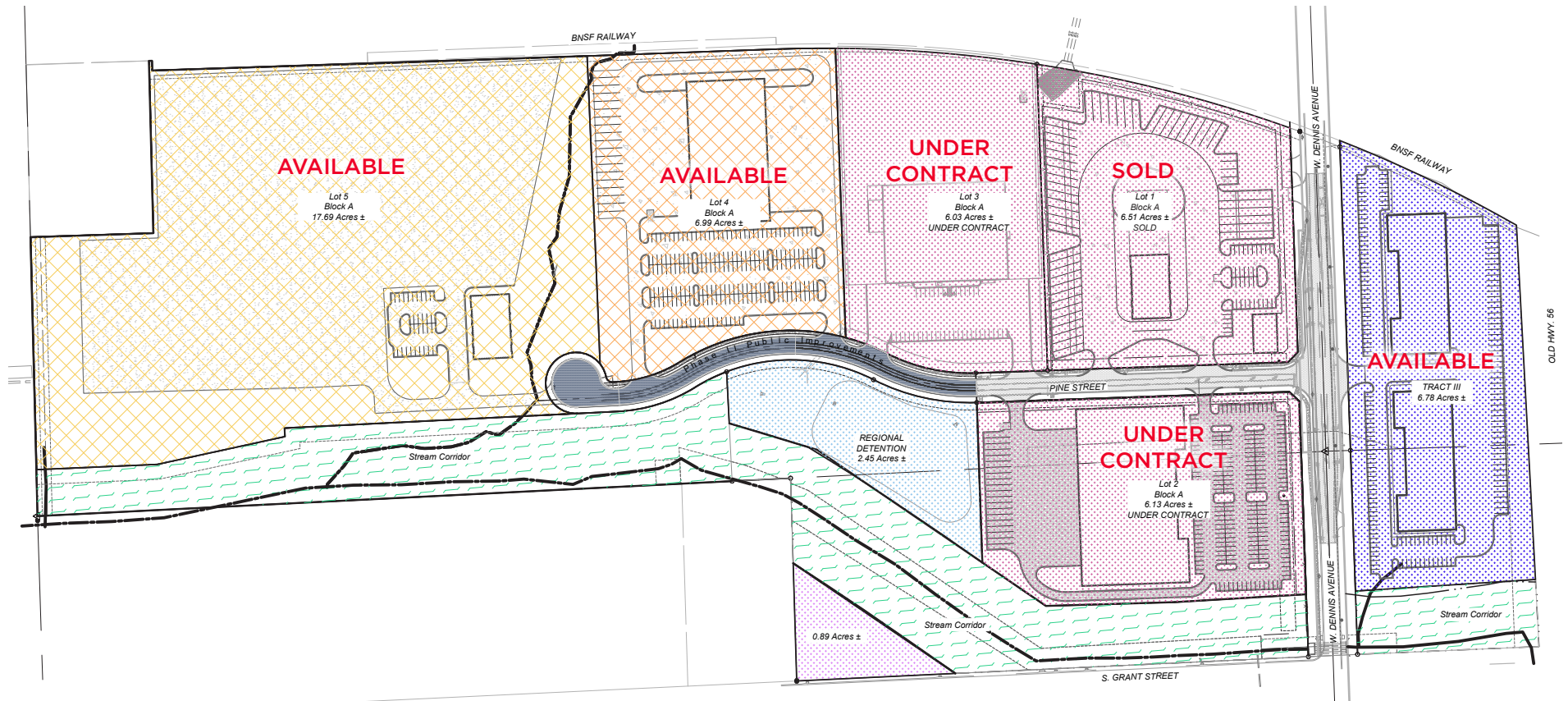
Kansas City, MO 64112

Main +1 816 221 2200

Fax +1 816 842 2798

cushmanwakefield.com

Concept Plan



Robert M. Holland, CCIM
 Director
 Direct +1 816 412 0214
 Mobile +1 913 424 4249
 rob.holland@cushwake.com

4600 Madison Avenue, Suite 800
 Kansas City, MO 64112
 Main +1 816 221 2200
 Fax +1 816 842 2798
 cushmanwakefield.com

Parking Rendering



Robert M. Holland, CCIM
Director
Direct +1 816 412 0214
Mobile +1 913 424 4249
rob.holland@cushwake.com

4600 Madison Avenue, Suite 800
Kansas City, MO 64112
Main +1 816 221 2200
Fax +1 816 842 2798
cushmanwakefield.com



FOR SALE
Olathe Commerce Park
400 W Dennis Avenue / Olathe, KS

Aerial

