



2400 - 2420 - 2450
DEL PASO ROAD
 SACRAMENTO, CALIFORNIA

CLASS A OFFICE SPACE AVAILABLE
FOR LEASE



OFFICE
 EQUITIES

Availability from ±2,708 SF - ±26,225 SF



400 Capitol Mall, Suite 1800, Sacramento, CA 95814 • LIC. #00616335

916.288.4800



2400 - 2420 - 2450
DEL PASO ROAD
 SACRAMENTO, CALIFORNIA

CLASS A OFFICE SPACE AVAILABLE
FOR LEASE



OFFICE
EQUITIES

Master Planned Business Park	High Speed Fiber Optics
Immediate I-5 & I-80 Freeway Access	Up To 4:1,000 SF Parking
LEED Silver Rating	8 Minutes To Sac International & Downtown
Proximate To Hotels, Restaurants & Retail Amenities	Tenant Improvements To Suit

2400

2420

2450

DEL PASO ROAD

CONTACT INFORMATION

KEVIN PARTINGTON

EXECUTIVE DIRECTOR

916.288.4807

kevin.partington@cushwake.com

CA License #01199010

CHRIS SCHWARZE

EXECUTIVE DIRECTOR

916.288.4803

chris.schwarze@cushwake.com

CA License #01291261

CHAD COOK, MCR, SIOR, CCIM

SENIOR DIRECTOR

916.329.1562

chad.cook@cushwake.com

CA License #01711687



400 Capitol Mall, Suite 1800, Sacramento, CA 95814 • LIC. #00616335

916.288.4800



2400 - 2420 - 2450
DEL PASO ROAD
 SACRAMENTO, CALIFORNIA

CLASS A OFFICE SPACE AVAILABLE
FOR LEASE



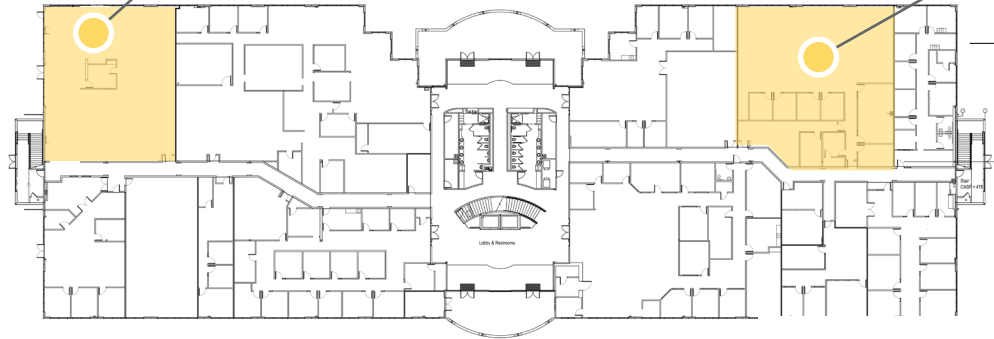
FIRST LEVEL

SUITE 195*

±4,556 RSF

SUITE 125

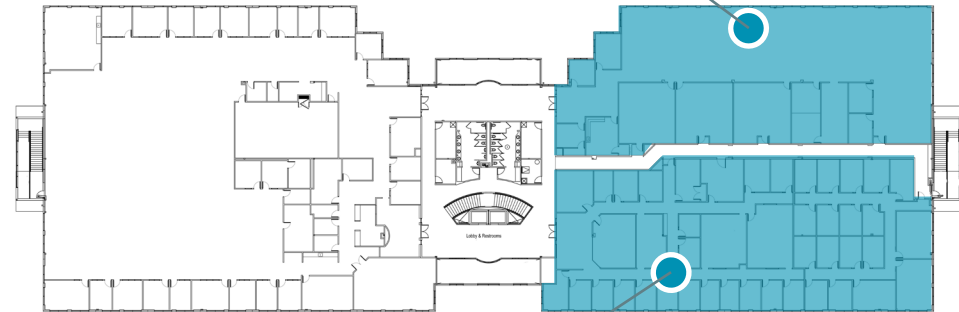
±5,444 RSF



SUITE 205*

±11,660 RSF

SECOND LEVEL



SUITE 210*

±13,123 RSF

***COMBINED- ±26,225 RSF**

*** WARM SHELL**

CONTACT INFORMATION

KEVIN PARTINGTON

EXECUTIVE DIRECTOR

916.288.4807

kevin.partington@cushwake.com

CA License #01199010

CHRIS SCHWARZE

EXECUTIVE DIRECTOR

916.288.4803

chris.schwarze@cushwake.com

CA License #01291261

CHAD COOK, MCR, SIOR, CCIM

SENIOR DIRECTOR

916.329.1562

chad.cook@cushwake.com

CA License #01711687





2400 - 2420 - 2450
DEL PASO ROAD
 SACRAMENTO, CALIFORNIA

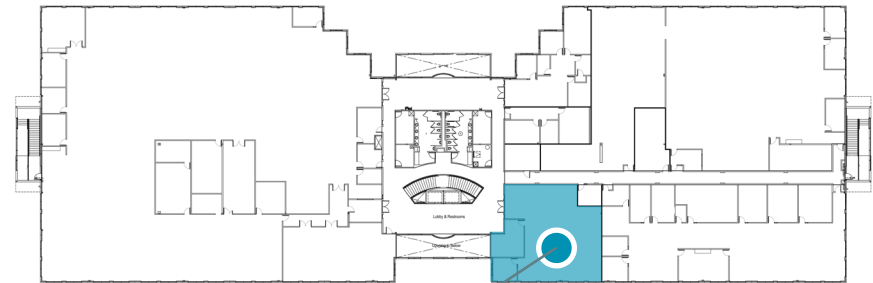
CLASS A OFFICE SPACE AVAILABLE
FOR LEASE



FIRST LEVEL



SECOND LEVEL



SUITE 260
 ±2,708 RSF

CONTACT INFORMATION

KEVIN PARTINGTON
 EXECUTIVE DIRECTOR
 916.288.4807
 kevin.partington@cushwake.com
 CA License #01199010

CHRIS SCHWARZE
 EXECUTIVE DIRECTOR
 916.288.4803
 chris.schwarze@cushwake.com
 CA License #01291261

CHAD COOK, MCR, SIOR, CCIM
 SENIOR DIRECTOR
 916.329.1562
 chad.cook@cushwake.com
 CA License #01711687





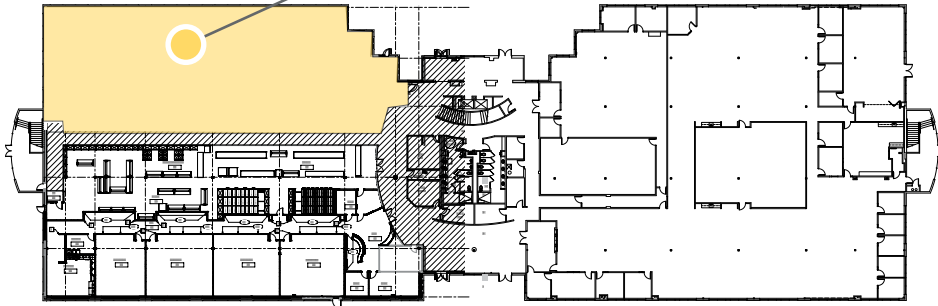
2400 - 2420 - 2450
DEL PASO ROAD
 SACRAMENTO, CALIFORNIA

CLASS A OFFICE SPACE AVAILABLE
FOR LEASE



FIRST LEVEL

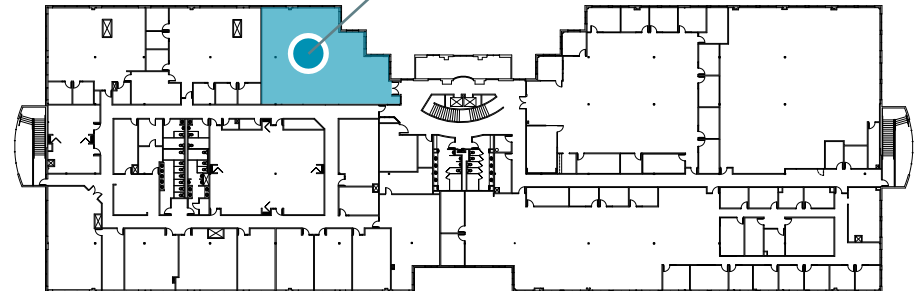
SUITE 150*
 ±10,647 RSF



* WARM SHELL

SECOND LEVEL

SUITE 250*
 ±3,412 RSF



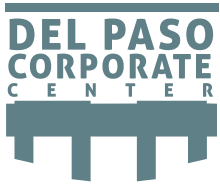
CONTACT INFORMATION

KEVIN PARTINGTON
 EXECUTIVE DIRECTOR
 916.288.4807
 kevin.partington@cushwake.com
 CA License #01199010

CHRIS SCHWARZE
 EXECUTIVE DIRECTOR
 916.288.4803
 chris.schwarze@cushwake.com
 CA License #01291261

CHAD COOK, MCR, SIOR, CCIM
 SENIOR DIRECTOR
 916.329.1562
 chad.cook@cushwake.com
 CA License #01711687





2400 - 2420 - 2450 DEL PASO ROAD

SACRAMENTO, CALIFORNIA

CLASS A OFFICE SPACE AVAILABLE
FOR LEASE



• HEALTH & WELLNESS •

- 1) Fitness Evolution
- 2) Anytime Fitness
- 3) CA Family Fitness
- 4) Curves
- 5) Bikram Yoga Natomas
- 6) Orangetheory Fitness

• PARKS •

- 1) North Natomas Regional Park
- 2) Kokomo Park
- 3) Quail Park
- 4) Linden Park
- 5) Sundance Park
- 6) Witter Ranch Park
- 7) Tanzanite Park

• FOOD •

- 1) Peet's Coffee & tea
- 2) Jack's Urban Eats
- 3) Jamba Juice
- 4) Freebirds World Burrito
- 5) Corner Bakery Cafe
- 6) Curry Corner
- 7) Bella Bru Cafe
- 8) Tuk Tuk Thai Cuisine
- 9) Panera Bread
- 10) Pete's Restaurant and Brewhouse
- 11) Tapioca Express
- 12) Beach Hut Deli
- 13) Buffalo Wild Wings

• HOTELS •

- 1) Homewood Suites by Hilton
- 2) Hampton Inn & Suites
- 3) Holiday Inn Express & Suites
- 4) Extended Stay America

• BANKS •

- 1) Wells Fargo
- 2) Tri Counties Bank
- 3) Bank of America
- 4) Safe Credit Union
- 5) Chase

• GAS STATIONS •

- 1) Shell
- 2) Chevron
- 3) Safeway

• SCHOOLS •

- 1) Inderkum High School
- 2) American River College Natomas Center
- 3) Natomas School of Music



• OTHER •

- 1) Raleys
- 2) Safeway
- 3) Natomas Veterinary Hospital
- 4) Cost Plus World Market
- 5) BevMo
- 6) Best Buy
- 7) Target
- 8) FedEx

POINTS OF INTEREST

DOWNTOWN SACRAMENTO • GOLDEN 1 CENTER • RAILYARDS • RALEY FIELD • SLEEP TRAIN ARENA • SAC INTERNATIONAL AIRPORT • SPINE BIKE TRAIL • DISCOVERY PARK • OLD TOWN SACRAMENTO

CONTACT INFORMATION

KEVIN PARTINGTON

EXECUTIVE DIRECTOR

916.288.4807

kevin.partington@cushwake.com

CA License #01199010

CHRIS SCHWARZE

EXECUTIVE DIRECTOR

916.288.4803

chris.schwarze@cushwake.com

CA License #01291261

CHAD COOK, MCR, SIOR, CCIM

SENIOR DIRECTOR

916.329.1562

chad.cook@cushwake.com

CA License #01711687





2400 - 2420 - 2450 DEL PASO ROAD SACRAMENTO, CALIFORNIA

CLASS A OFFICE SPACE AVAILABLE
FOR LEASE



CONTACT INFORMATION

KEVIN PARTINGTON

EXECUTIVE DIRECTOR

916.288.4807

kevin.partington@cushwake.com

CA License #01199010

CHRIS SCHWARZE

EXECUTIVE DIRECTOR

916.288.4803

chris.schwarze@cushwake.com

CA License #01291261

CHAD COOK, MCR, SIOR, CCIM

SENIOR DIRECTOR

916.329.1562

chad.cook@cushwake.com

CA License #01711687



400 Capitol Mall, Suite 1800, Sacramento, CA 95814 • LIC. #00616335

916.288.4800