

FOR LEASE
MERCHANTS PLAZA
RETAIL SPACE
Mobile, AL



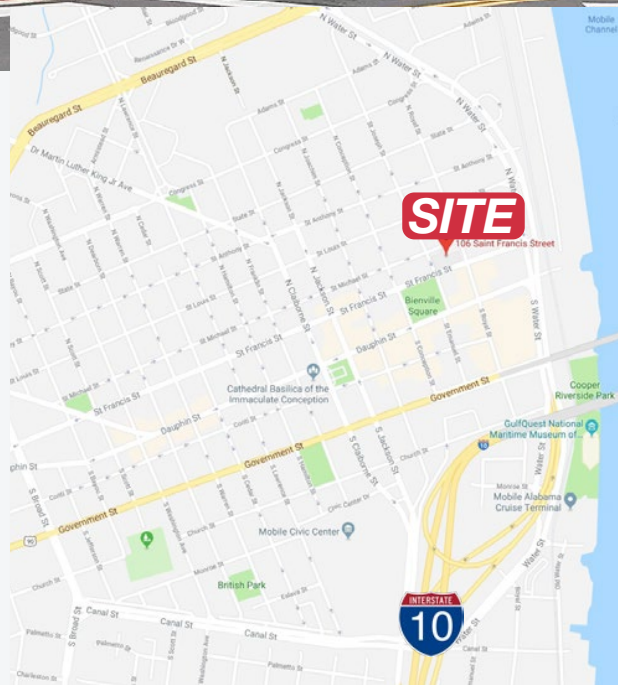
Merchants Plaza: Retail Space

106 St Francis Street
Mobile, AL 36602

Property Features

- **UNIT A:** 850 SF (Corner of St. Michael & Royal)
- **UNIT B:** 925 SF (Facing St. Michael St.)
- Historic landmark currently being converted into Class A office, retail, restaurant and apartments
- First floor Restaurant/Retail space available in the Merchant Plaza Garage
- Units across the street from the Ruby Slipper Cafe
- Property encompasses entire city block at the northeast corner of St. Francis and St. Joseph Streets
- Convenient to all the downtown amenities
- Tenant responsible for actual utilities and janitorial
- **Build out allowance available**

LEASE RATE: \$20.00/SF/YR MG



For more information:

Allan R. Cameron, Jr., SIOR

251.751.9553 cell · acameron@nai-mobile.com

Josh Hall

251.689.9002 cell · jwhall@nai-mobile.com

NO WARRANTY OR REPRESENTATION, EXPRESS OR IMPLIED, IS MADE AS TO THE ACCURACY OF THE INFORMATION CONTAINED HEREIN, AND THE SAME IS SUBMITTED SUBJECT TO ERRORS, OMISSIONS, CHANGE OF PRICE, RENTAL OR OTHER CONDITIONS, PRIOR SALE, LEASE OR FINANCING, OR WITHDRAWAL WITHOUT NOTICE, AND OF ANY SPECIAL LISTING CONDITIONS IMPOSED BY OUR PRINCIPALS NO WARRANTIES OR REPRESENTATIONS ARE MADE AS TO THE CONDITION OF THE PROPERTY OR ANY HAZARDS CONTAINED THEREIN ARE ANY TO BE IMPLIED.

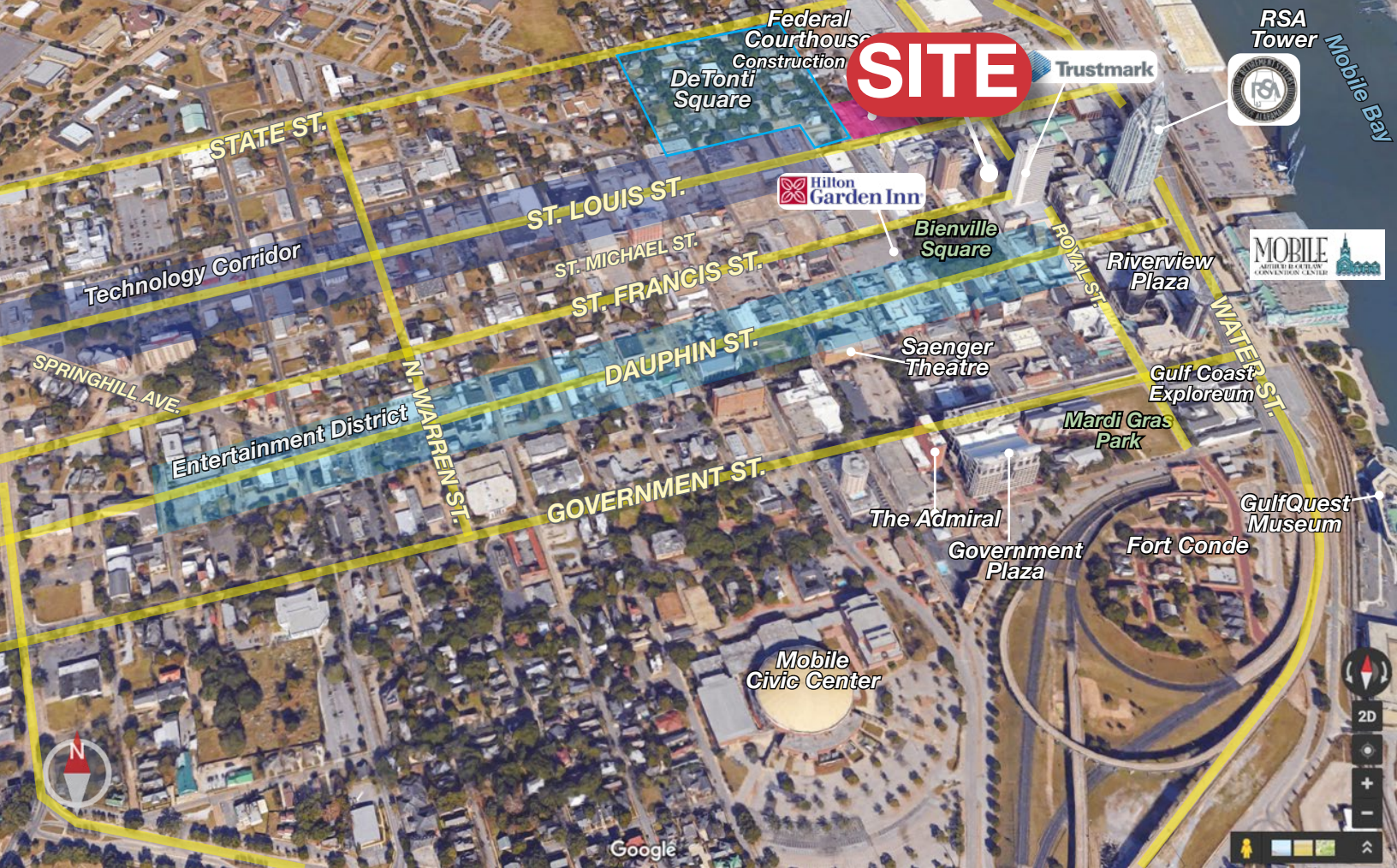


56 St. Emanuel St.

Mobile, AL

251.438.4312

www.nai-mobile.com



Location Description:

Walking distance to restaurants, shopping, banks, Government Plaza, new Federal Courthouse site, LoDa Entertainment District, St. Louis St. Technology Corridor and much more. This property fronts St. Francis, St. Joseph, St. Michael and Royal Streets, encompassing an entire city block, offering spectacular views of downtown Mobile and Mobile Bay from the 18-story tower. The ground floors of the project are reserved for retail, restaurants and office space. All finishes will be of the highest caliber, resulting in the newest Class A building of downtown Mobile while still preserving its rich history.

WALK	Bienville Square	1 min.
	Dauphin Street	2 min.
	St. Louis Street	3 min.
	Water Street	3 min.
	Government Street	5 min.
	Cathedral Square	6 min.
DRIVE	I-10	3 min.
	I-65	8 min.
	Baldwin Co., AL	11 min.





