

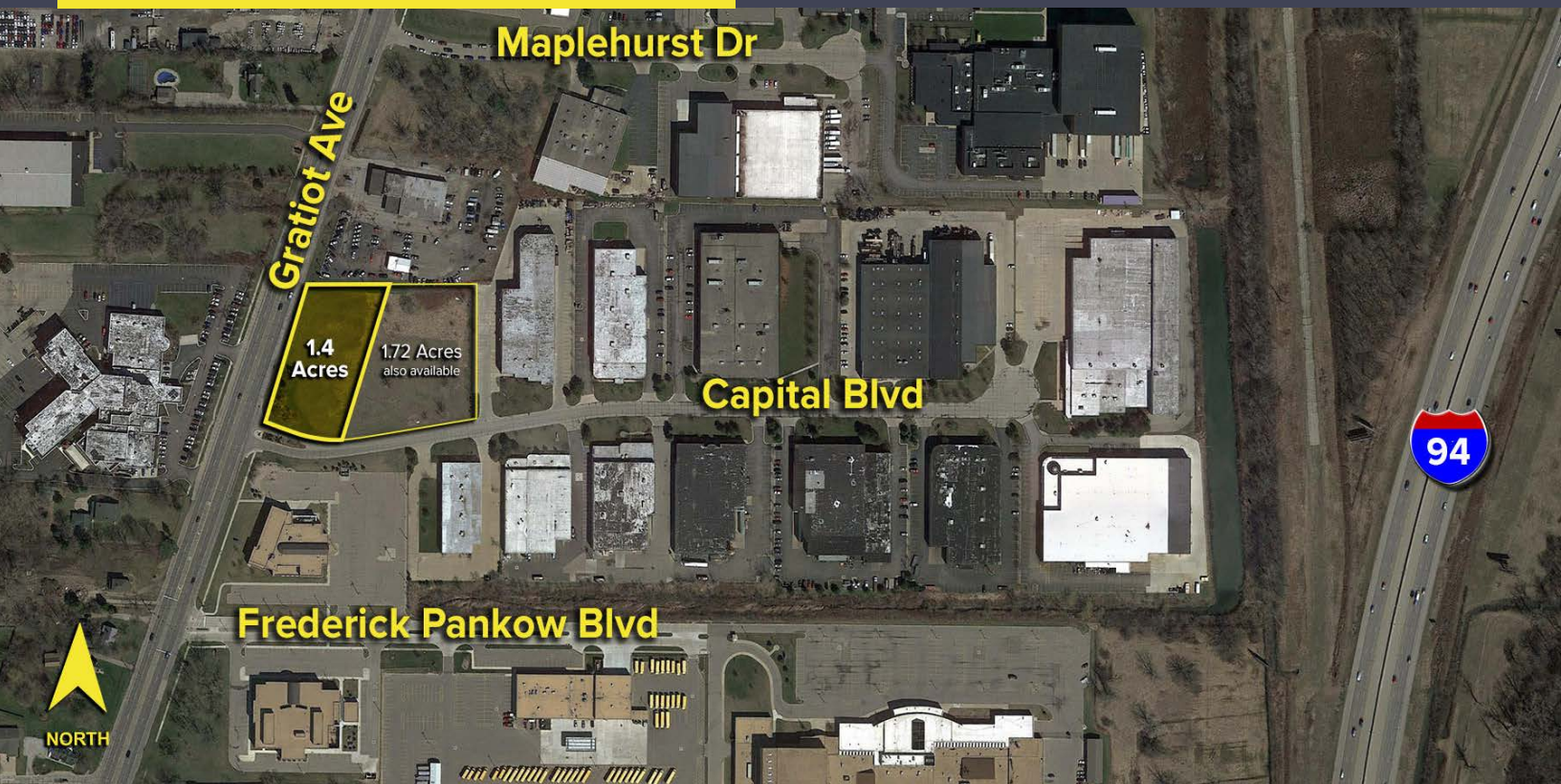
N. GRATIOT AVENUE  
CLINTON TWP., MICHIGAN

LAND FOR SALE  
1.40 Acres Available



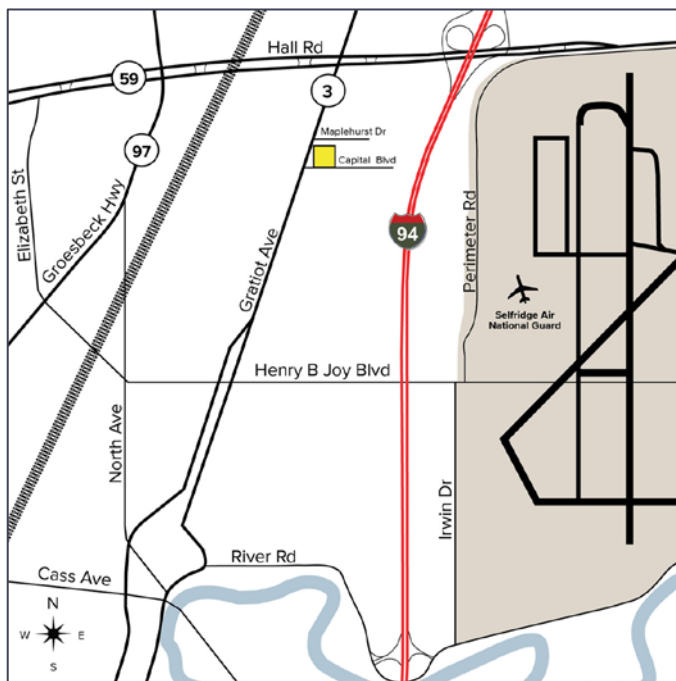
**SIGNATURE  
ASSOCIATES**  
KNOW SIGNATURE | KNOW RESULTS

**DEVELOPMENT LAND**



## PROPERTY FEATURES

- 1.40 acres available
- Zoned B-3
- All utilities at site
- Cleared and ready for development
- Surrounded by activity and across the street from a hotel/convention center
- Excellent retail opportunity
- Can be combined with the adjacent 1.72 acre site
- Sale Price: \$295,000 (\$210,714.29)



For more information, please contact:

**BEN WILKIEMEYER**

(248) 359 0624

[bwilkiemeyer@signatureassociates.com](mailto:bwilkiemeyer@signatureassociates.com)

**PETER WALOCKO**

(248) 948 0106

[pwalocko@signatureassociates.com](mailto:pwalocko@signatureassociates.com)

**SIGNATURE ASSOCIATES**

One Towne Square, Suite 1200

Southfield, MI 48076

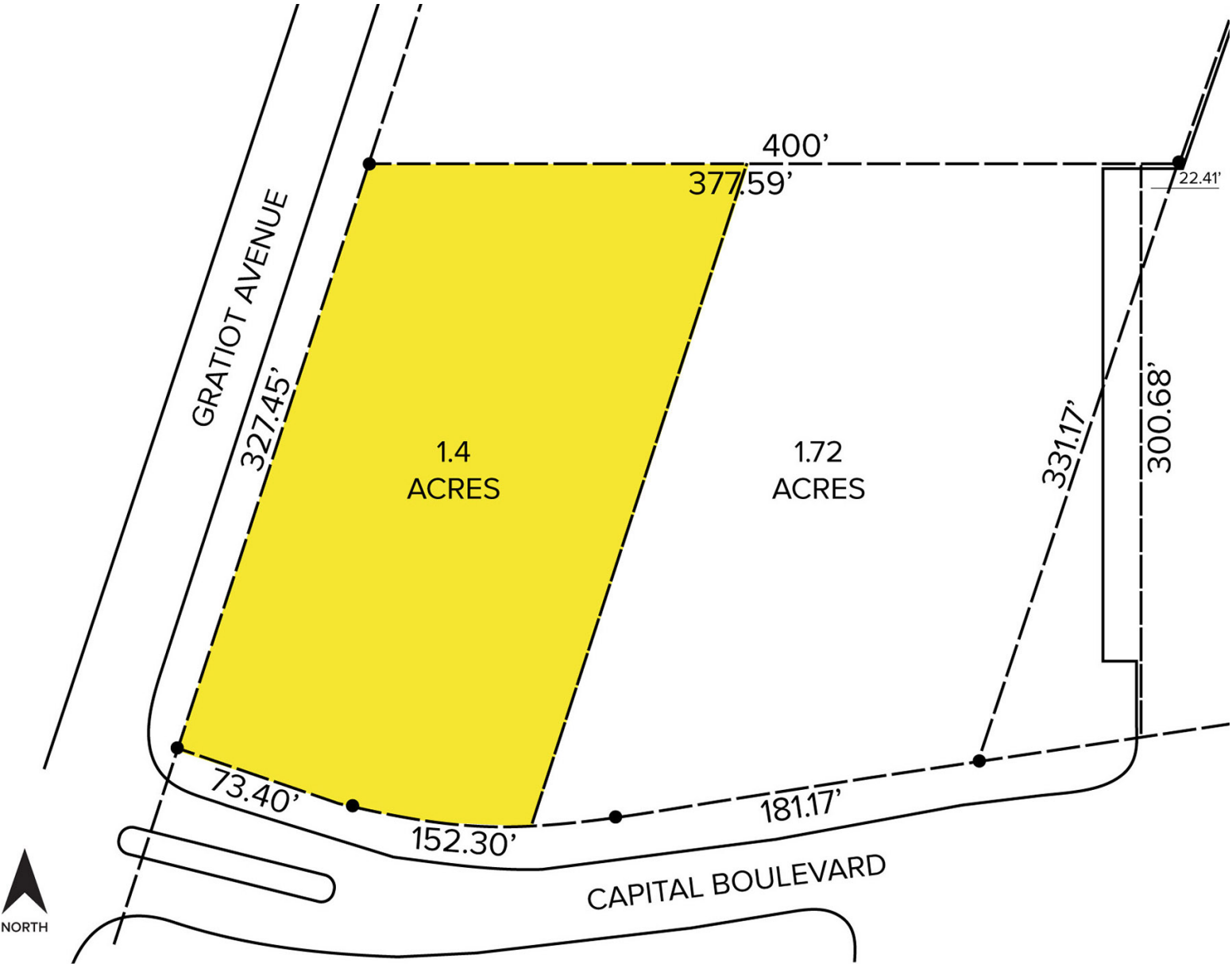
[www.signatureassociates.com](http://www.signatureassociates.com)

Information is subject to verification and no liability for errors or omissions is assumed. Price is subject to change and listing withdrawal.

N. Gratiot Avenue – Clinton Twp., Michigan  
Land For Sale

1.4  
Acres  
AVAILABLE

Site Plan



For more information, please contact:

**BEN WILKIEMEYER**  
(248) 359 0624  
bwilkiemeyer@signatureassociates.com

**PETER WALOCKO**  
(248) 948 0106  
pwalocko@signatureassociates.com

**SIGNATURE ASSOCIATES**  
One Towne Square, Suite 1200  
Southfield, MI 48076  
www.signatureassociates.com

Information is subject to verification and no liability for errors or omissions is assumed. Price is subject to change and listing withdrawal.