



**CUSHMAN &  
WAKEFIELD**  
Commerce

FOR SALE

# Mule Ranch Industrial

2715 North Mule Ranch Circle / Corinne, Utah

FOR SALE \$325,000



**Office/warehouse for sale. Located close to the Walmart Distribution Center and Proctor & Gamble.**

### Property Highlights

- Size: 5,000 SF Total
  - 2,500 SF Office
  - 2,500 SF Warehouse
- Sales Price: \$325,000
- 1.45 Acre Yard
- Fire suppression system
- Easy access to I-15



### Robert Lindsey

Branch Manager/Investment Specialist  
+1 801 784 5313  
rlindsey@comre.com  
Owner/Agent

372 24<sup>th</sup> Street, Suite 320  
Ogden, Utah 84401  
Main +1 801 525 3000  
Fax +1 801 525 9596

**comre.com**

*Independently Owned and Operated / A Member of the Cushman & Wakefield Alliance*

Cushman & Wakefield Copyright 2016. No warranty or representation, express or implied, is made to the accuracy or completeness of the information contained herein, and same is submitted subject to errors, omissions, change of price, rental or other conditions, withdrawal without notice, and to any special listing conditions imposed by the property owner(s). As applicable, we make no representation as to the condition of the property (or properties) in question.  
(path: G:\1 - Projects\Ogden\Lindsey, R\1 - Flyers\2715nMuleRanchCircle)

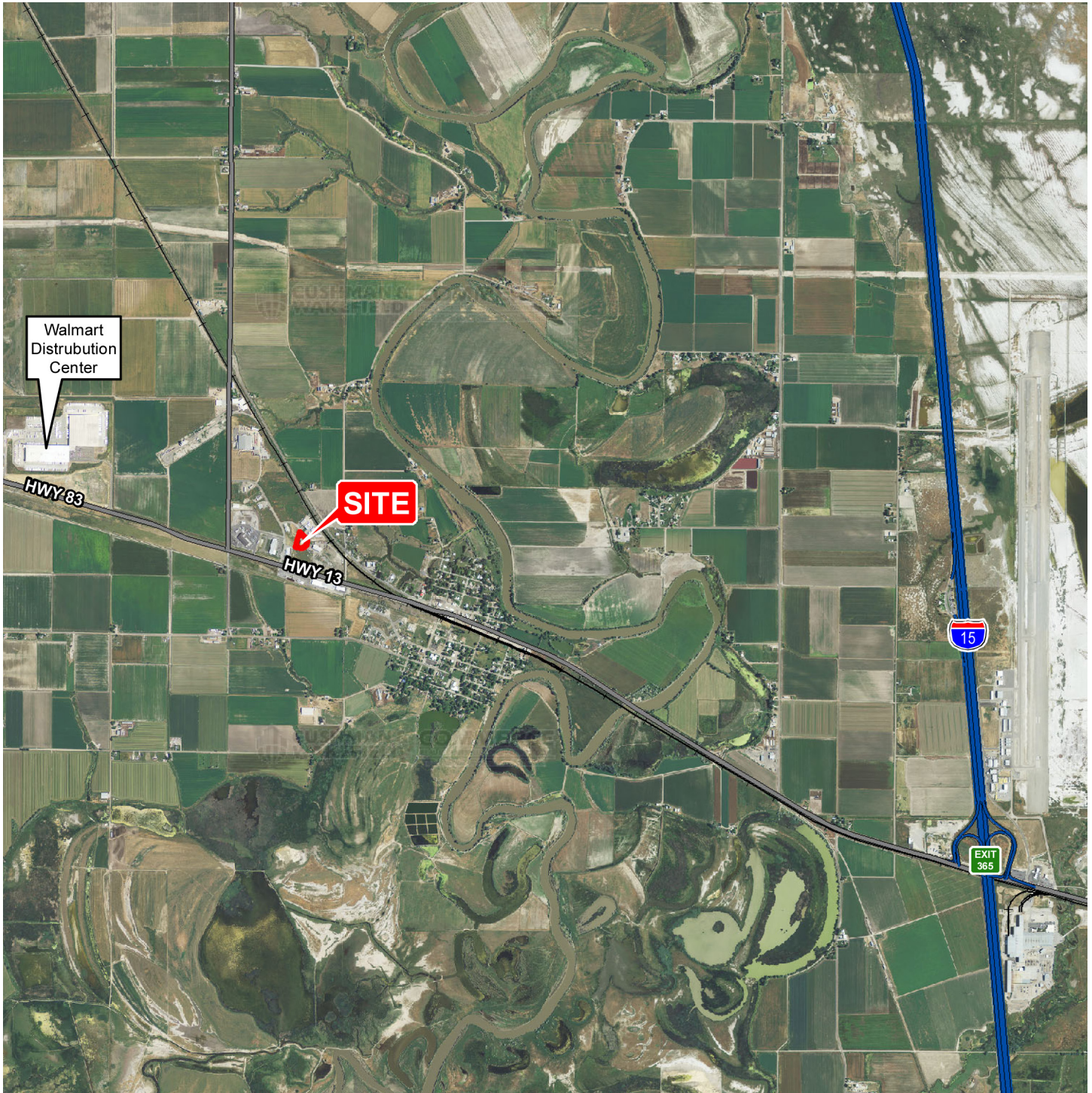


**CUSHMAN &  
WAKEFIELD**  
Commerce

FOR SALE

# Mule Ranch Industrial

2715 North Mule Ranch Circle / Corinne, Utah



## Robert Lindsey

Branch Manager/Investment Specialist  
+1 801 784 5313  
rlindsey@comre.com  
Owner/Agent

372 24<sup>th</sup> Street, Suite 320  
Ogden, Utah 84401  
Main +1 801 525 3000  
Fax +1 801 525 9596

**comre.com**

*Independently Owned and Operated / A Member of the Cushman & Wakefield Alliance*

Cushman & Wakefield Copyright 2016. No warranty or representation, express or implied, is made to the accuracy or completeness of the information contained herein, and same is submitted subject to errors, omissions, change of price, rental or other conditions, withdrawal without notice, and to any special listing conditions imposed by the property owner(s). As applicable, we make no representation as to the condition of the property (or properties) in question.  
(path: G:\1 - Projects\Ogden\Lindsey, R\1 - Flyers\2715nMuleRanchCircle)