

Pad Site Available



*Building and canopy have been demolished

For more information:

- Close proximity to I-35
- Located at the NE corner of Shawnee Mission Pkwy and Nieman
- Shares intersection with Walgreen's, Firestone, JoAnn Fabrics, Office Depot, Midas, 24 Hour Fitness and many others!
- .68 acres with 198' of frontage on Nieman
- 15,018 cars per day on Nieman Road and 35,727 cars per day on Shawnee Mission Parkway

Kim Bartalos, CLS

816.412.8466

kbartalos@blockllc.com

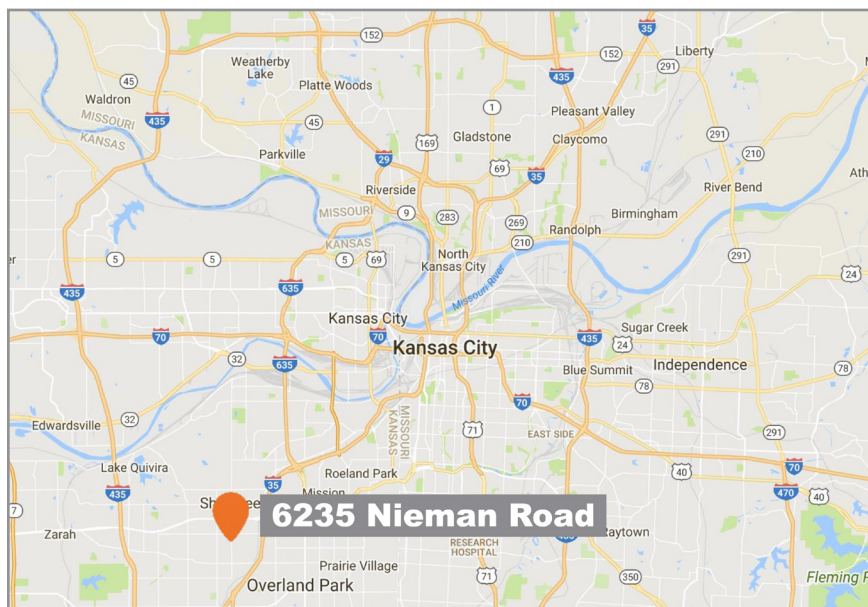
The information contained in this marketing flyer is presented as general information only. Block Real Estate Services, LLC. makes no representation as to its accuracy.

This information is not intended as legal, financial or real estate advice and must not be relied upon as such. You should make your own inquiries, obtain independent inspections, and seek professional advice tailored to your specific circumstances before making any legal, financial or real estate decisions.

6235 Nieman Road

Shawnee, Kansas

For Sale

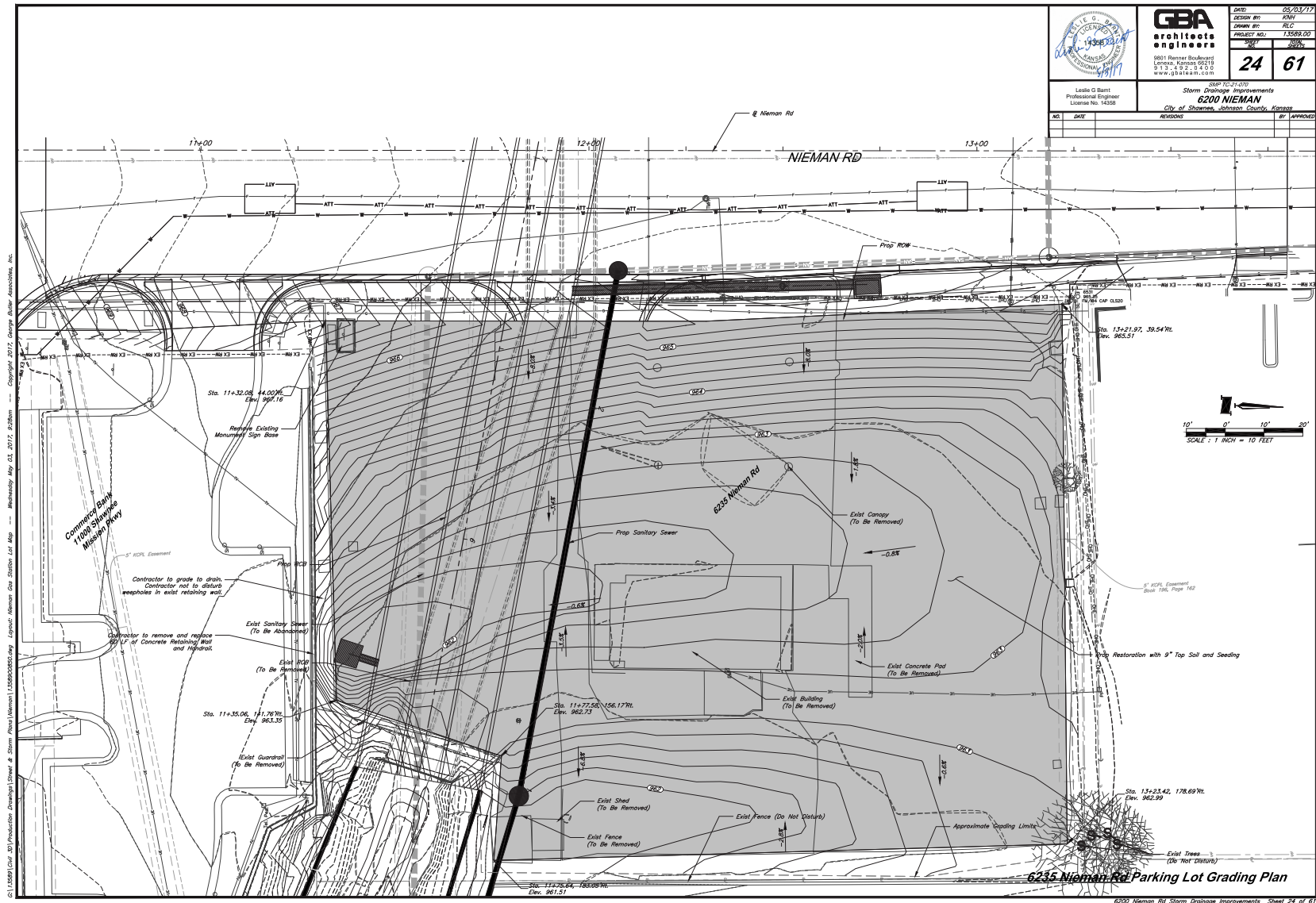


For more information:

Kim Bartalos, CLS

816.412.8466

kbartalos@blockllc.com



Demographics

6235 Nieman Rd Shawnee, KS 66203		1 mi radius	3 mi radius	5 mi radius
POPULATION	2017 Estimated Population	11,425	86,698	209,352
	2022 Projected Population	11,988	91,001	218,688
	2010 Census Population	10,624	82,520	199,622
	2000 Census Population	10,905	81,716	200,716
	Projected Annual Growth 2017 to 2022	1.0%	1.0%	0.9%
	Historical Annual Growth 2000 to 2017	0.3%	0.4%	0.3%
	2017 Median Age	39.1	38.5	38.5
HOUSEHOLDS	2017 Estimated Households	4,918	36,524	90,058
	2022 Projected Households	5,265	39,059	95,772
	2010 Census Households	4,680	34,621	85,129
	2000 Census Households	4,912	33,764	83,777
	Projected Annual Growth 2017 to 2022	1.4%	1.4%	1.3%
	Historical Annual Growth 2000 to 2017	-	0.5%	0.4%
RACE AND ETHNICITY	2017 Estimated White	82.7%	80.1%	80.8%
	2017 Estimated Black or African American	6.4%	7.3%	6.7%
	2017 Estimated Asian or Pacific Islander	2.7%	3.9%	3.7%
	2017 Estimated American Indian or Native Alaskan	0.4%	0.5%	0.5%
	2017 Estimated Other Races	7.9%	8.3%	8.3%
	2017 Estimated Hispanic	13.2%	12.7%	12.8%
INCOME	2017 Estimated Average Household Income	\$64,189	\$77,748	\$82,496
	2017 Estimated Median Household Income	\$54,812	\$67,680	\$70,348
	2017 Estimated Per Capita Income	\$28,089	\$32,937	\$35,626
EDUCATION (AGE 25+)	2017 Estimated Elementary (Grade Level 0 to 8)	2.6%	2.9%	2.7%
	2017 Estimated Some High School (Grade Level 9 to 11)	6.2%	4.5%	4.3%
	2017 Estimated High School Graduate	28.2%	22.4%	19.7%
	2017 Estimated Some College	23.0%	22.6%	21.7%
	2017 Estimated Associates Degree Only	9.5%	8.8%	7.6%
	2017 Estimated Bachelors Degree Only	21.9%	25.1%	27.9%
	2017 Estimated Graduate Degree	8.7%	13.7%	16.1%
BUSINESS	2017 Estimated Total Businesses	638	3,839	9,158
	2017 Estimated Total Employees	5,755	56,158	121,762
	2017 Estimated Employee Population per Business	9.0	14.6	13.3
	2017 Estimated Residential Population per Business	17.9	22.6	22.9