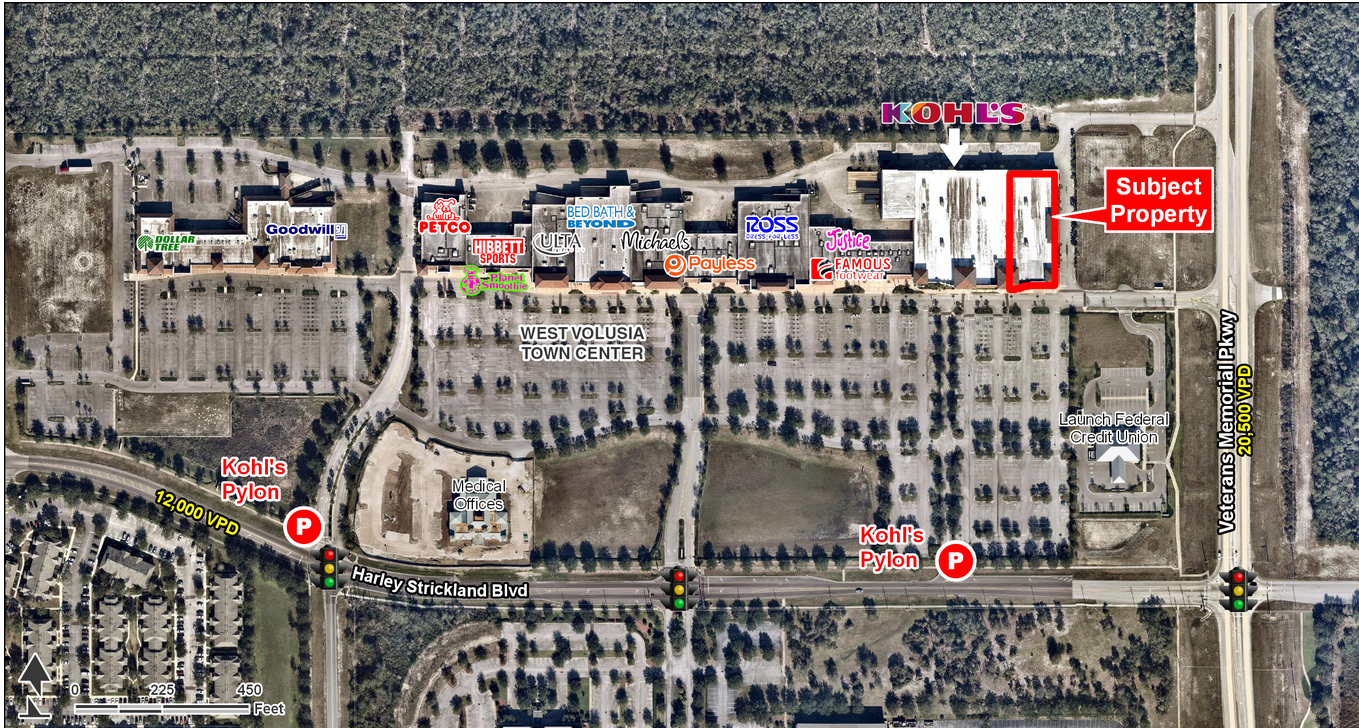


PRIME RETAIL SPACE ADJACENT TO KOHL'S

1065 Harley Strickland Blvd, Orange City, FL 32763 | Harley Strickland Blvd & Veterans Memorial Pkwy | #952



AVAILABLE SF:
24,200 SF

FRONTAGE:
APPROX 97' 11"

ZONING:
COMMERCIAL

RATES:
CALL FOR DETAILS

AREA ANCHORS



- Jr. Anchor space available next to Kohl's
- Located on the Harley Strickland Blvd and NWQ of Veterans Memorial Pkwy
- Excellent visibility
- Located in the dominant power center in the trade area

DEMOGRAPHICS	1 MILE	3 MILES	5 MILES	TRAFFIC COUNTS	
2018 TOTAL POPULATION	3,687	54,614	103,257	Harley Strickland Blvd	12,000 VPD
2018 DAYTIME POPULATION	8,801	47,828	83,158	Veterans Memorial Pkwy	20,500 VPD
2018 AVERAGE HH INCOME	53,170	60,045	63,724		
2018 MEDIAN HH INCOME	37,041	46,632	50,637		



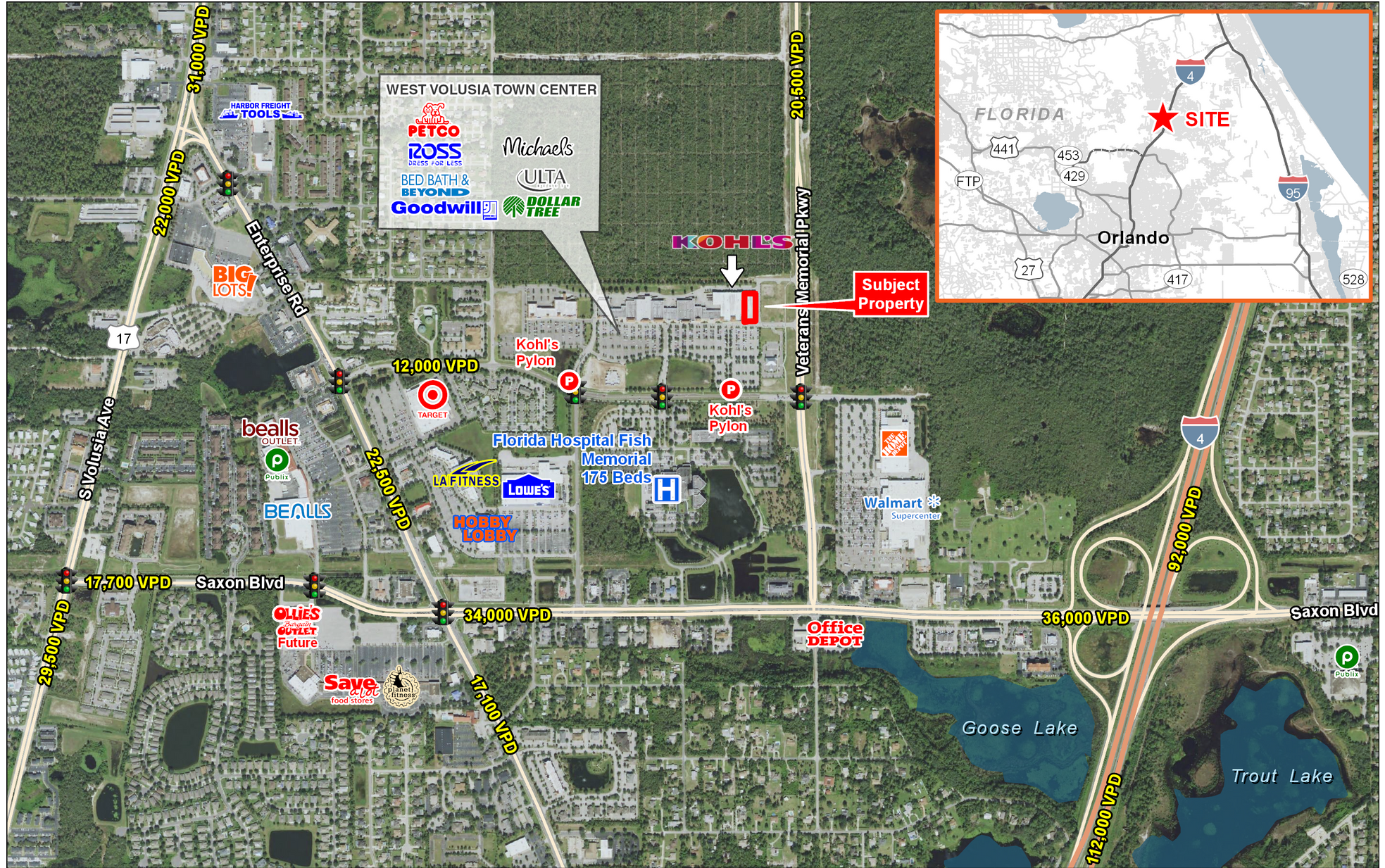
FOR MORE INFORMATION, CONTACT EXCLUSIVE AGENT(S):
GAVIN WALSH • gavin.walsh@tscg.com • 407.788.0543

Demographics: Esri 2018 No warranty expressed or implied has been made as to the accuracy of the information provided herein, no liability assumed for error or omissions.



PRIME RETAIL SPACE ADJACENT TO KOHL'S

1065 Harley Strickland Blvd, Orange City, FL 32763 | Harley Strickland Blvd & Veterans Memorial Pkwy | #952



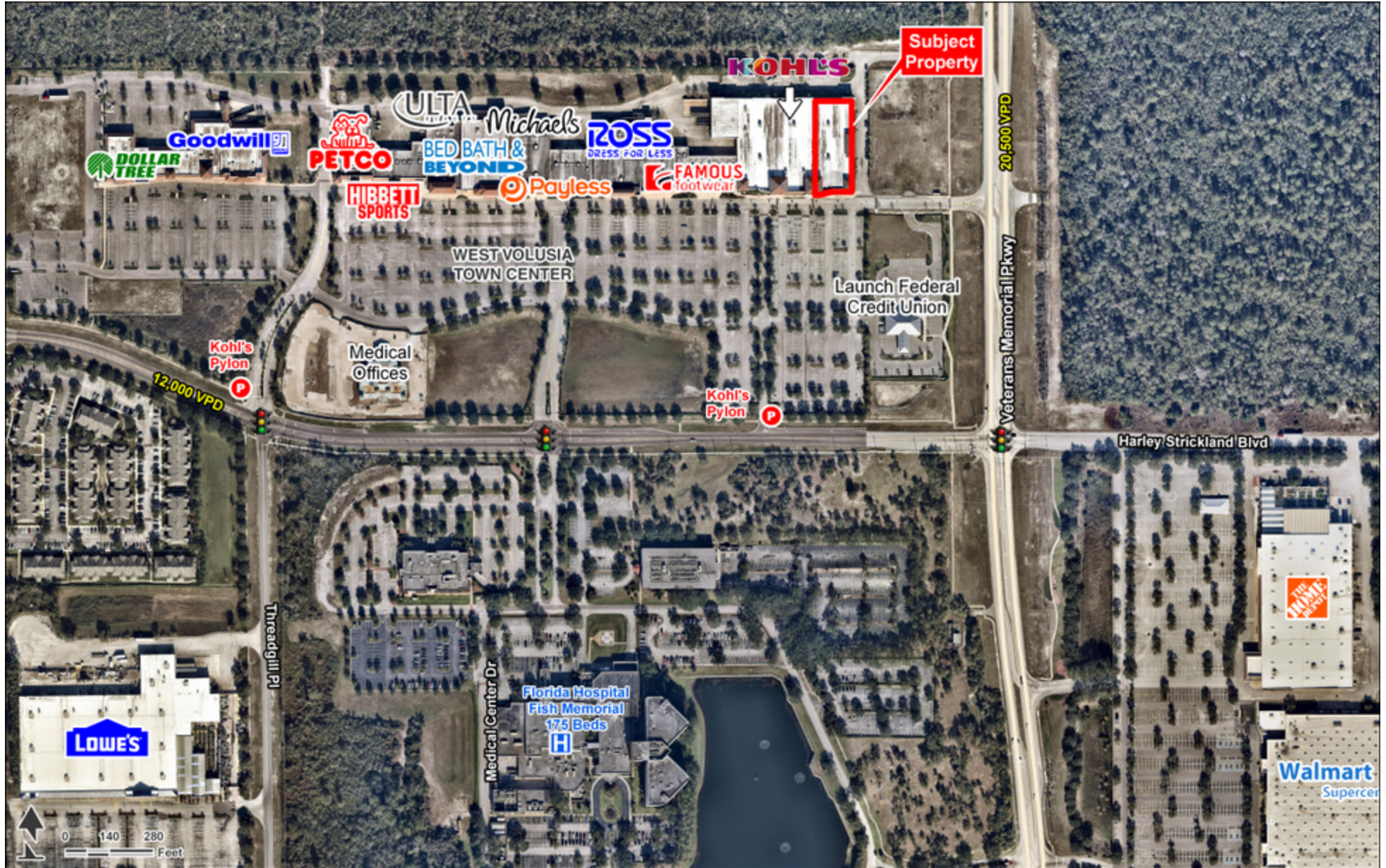
FOR MORE INFORMATION, CONTACT EXCLUSIVE AGENT(S):
 GAVIN WALSH • gavin.walsh@tscg.com • 407.788.0543



Demographics: Esri 2018 No warranty expressed or implied has been made as to the accuracy of the information provided herein, no liability assumed for error or omissions.

PRIME RETAIL SPACE ADJACENT TO KOHL'S

1065 Harley Strickland Blvd, Orange City, FL 32763 | Harley Strickland Blvd & Veterans Memorial Pkwy | #952



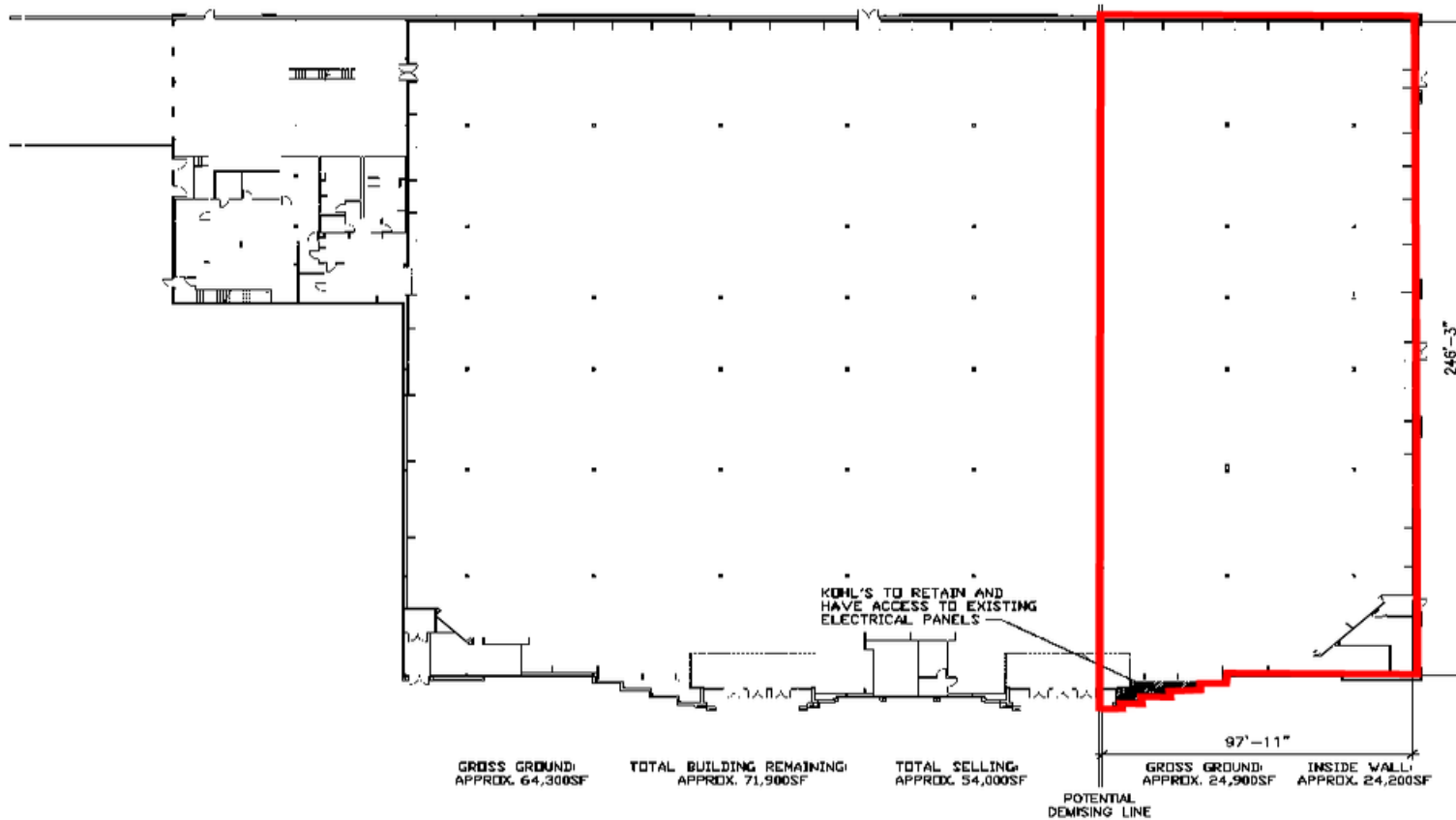
FOR MORE INFORMATION, CONTACT EXCLUSIVE AGENT(S):
GAVIN WALSH • gavin.walsh@tscg.com • 407.788.0543



Demographics: Esri 2018 No warranty expressed or implied has been made as to the accuracy of the information provided herein, no liability assumed for error or omissions.

PRIME RETAIL SPACE ADJACENT TO KOHL'S

1065 Harley Strickland Blvd, Orange City, FL 32763 | Harley Strickland Blvd & Veterans Memorial Pkwy | #952



#10952 Orange City, FL
Updated: 3/6/18



FOR MORE INFORMATION, CONTACT EXCLUSIVE AGENT(S):
GAVIN WALSH • gavin.walsh@tscg.com • 407.788.0543



CHAINLINKS
RETAIL ADVISORS