



3000 Bee Ridge Road, Sarasota | FL

- New rate: \$26.00/SF Gross
- Turn-key furnished
- 4,341 SF office space **for lease**
- Full 2nd floor available

Join Achieva in this highly visible signature office building with 33,500 AADT on Bee Ridge Road. Full floor available with separate exterior entrance.

Lori Hellstrom, CCIM

Vice President | Office Services
lori.hellstrom@colliers.com
Phone: 941 504 5981

Fabienne Porter

Senior Client Service Specialist
fabienne.porter@colliers.com
Phone: 727 450 6961

Property Overview

Highlights

Address: 3000 Bee Ridge Road,
Sarasota, FL 34239

Zoning: OPI-Planned Office,
Professional and
Institutional

Year Built: 1984

Building Size: 8,682 SF

Available: 4,341 SF - 2nd Floor
Move-in ready
Turn-key furnished

Rent: \$26.00/SF Gross
(includes operating expenses,
electric and janitorial)

Tenant responsible for internet
and telephone.



2 Story
Office
Building



Elevator



ADA
Compliant



Parking:
4/1,000 SF



10 minutes
to I75



15 minutes to
downtown



19 minutes to
Sarasota Bradenton
International Airport

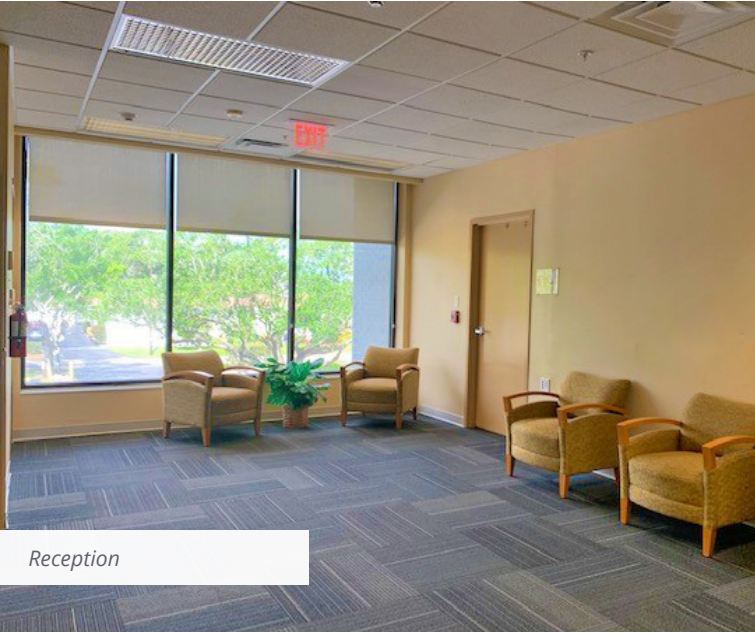
Features

- **Turn-key furnished**
- **Move-in ready, immediate occupancy**
- Full floor available with separate exterior entrance
- Individually controlled heating/cooling
- Access cards for secure entrance 24/7
- 8-9 ft ceilings
- On-site generator



4,341 SF
available

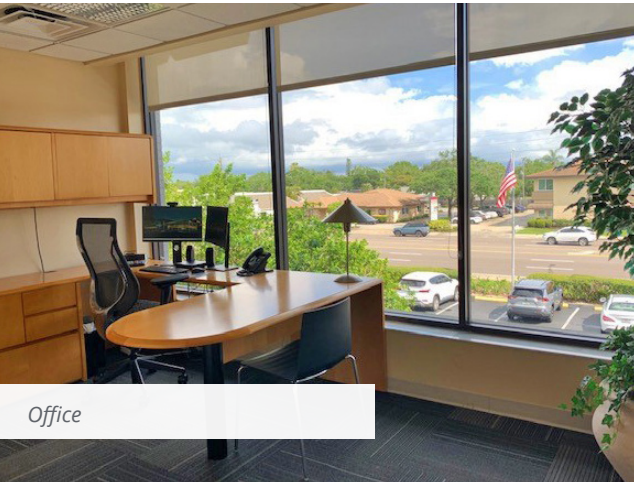
Property Gallery



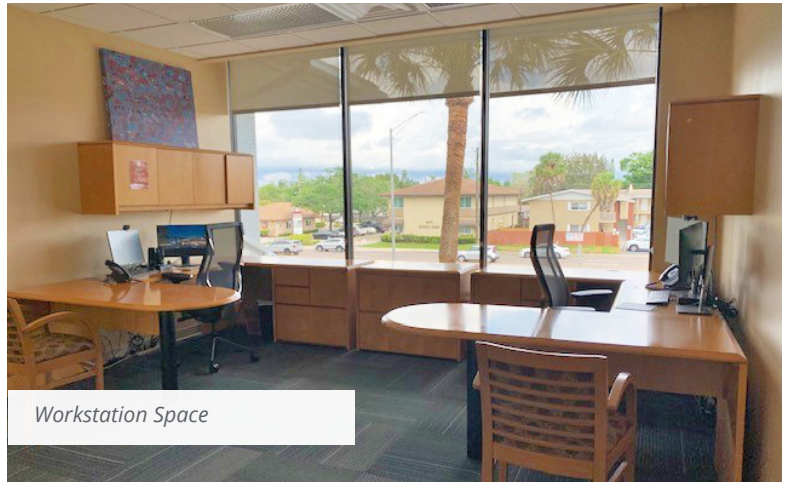
Reception



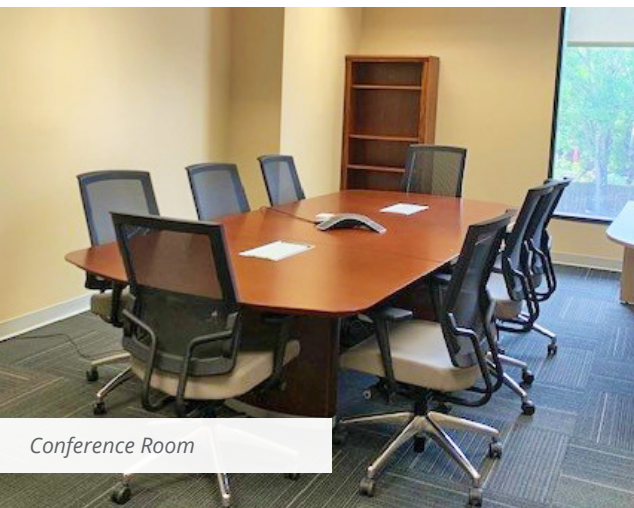
Offices With Side Light Windows



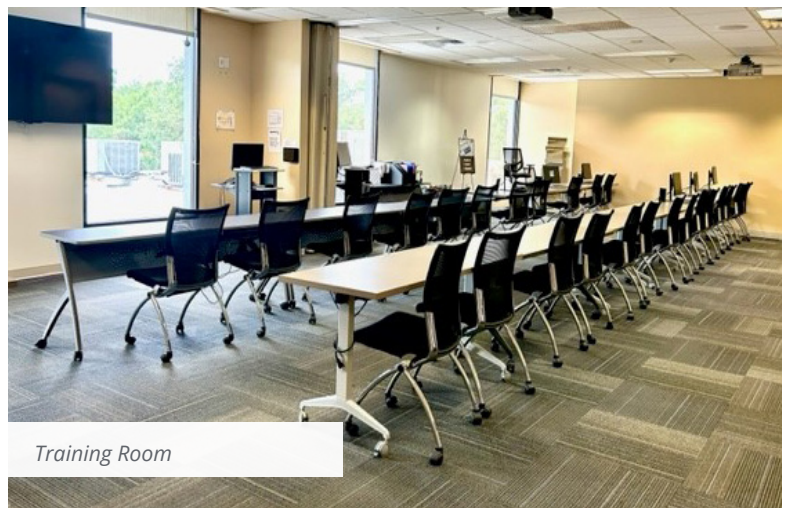
Office



Workstation Space



Conference Room

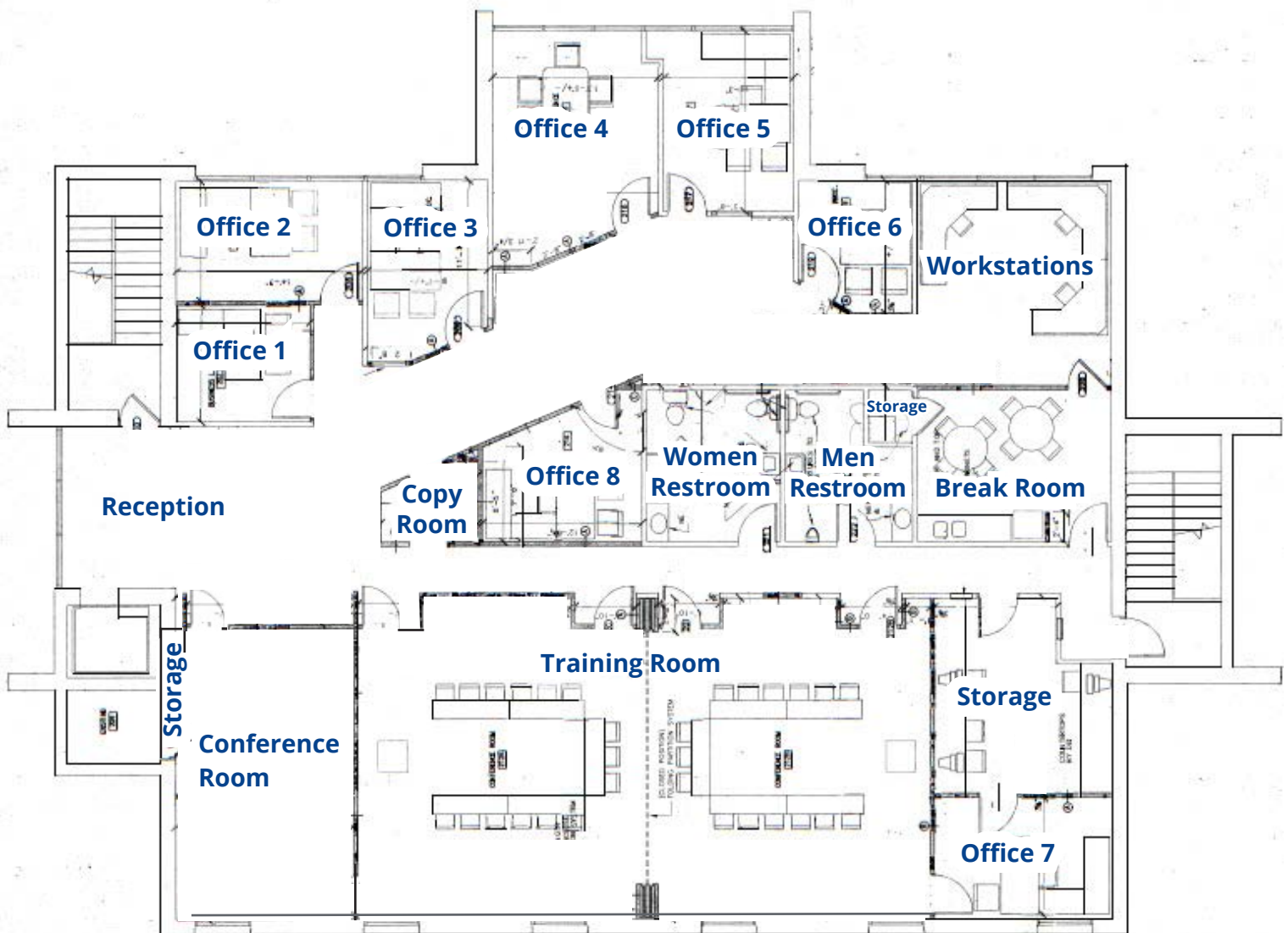


Training Room

Floor Plan

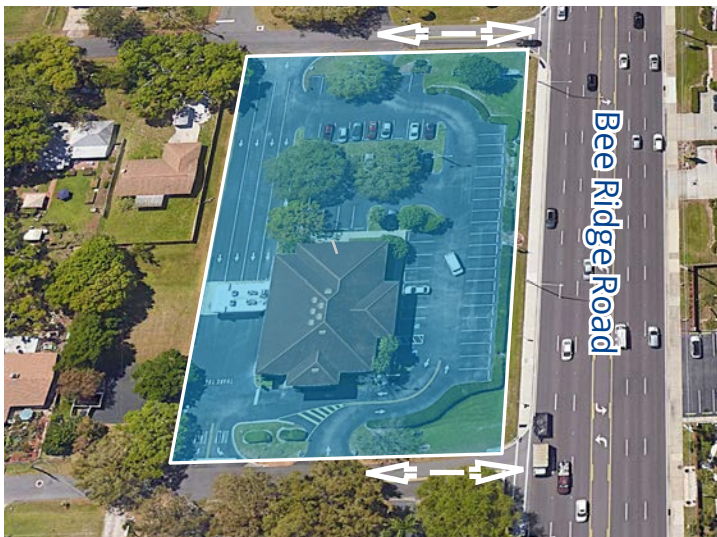
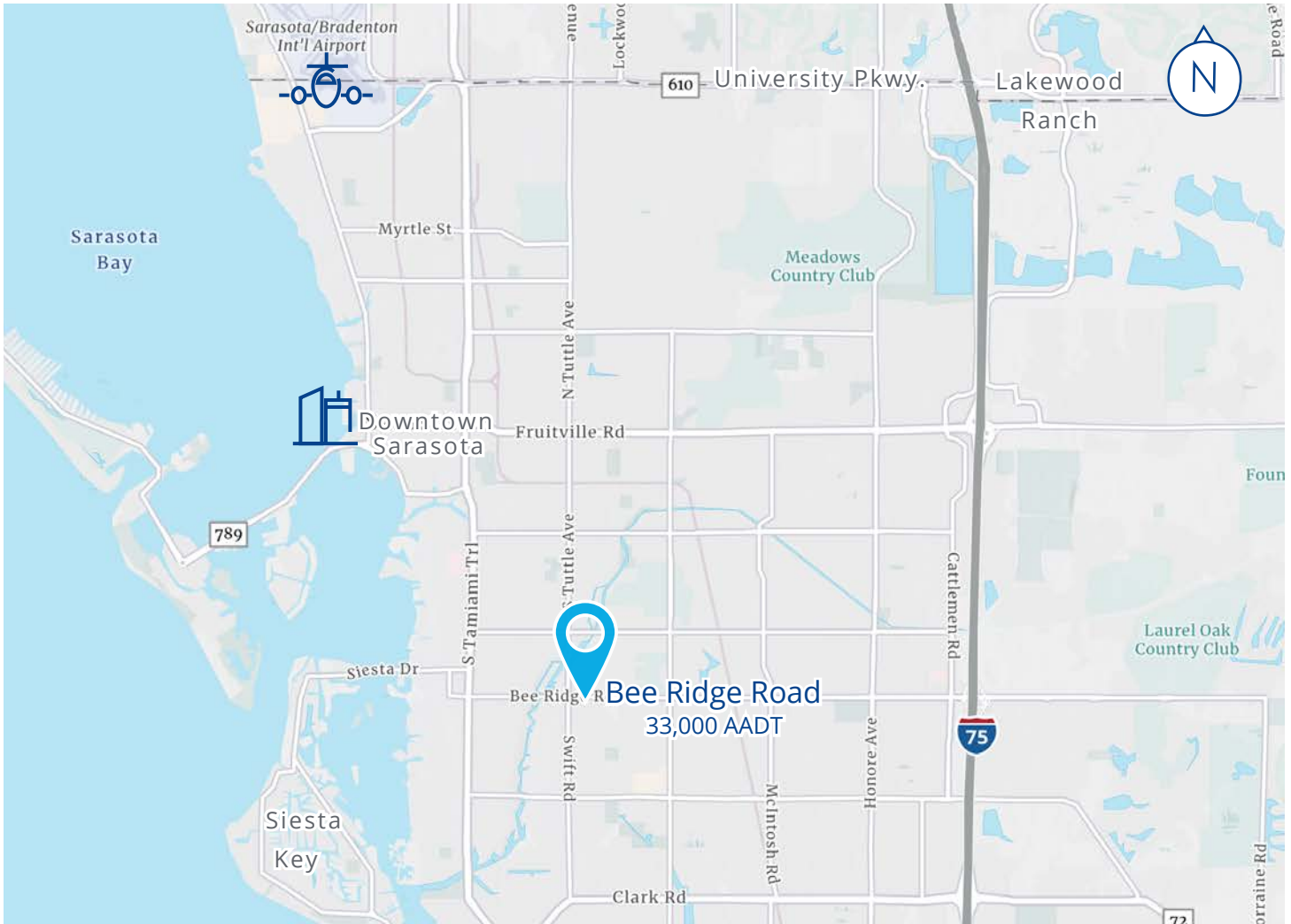
4,341 SF - Full Floor

- Lobby/reception
- 8 Offices
- Open area for workstations
- Conference room
- Large training room with folding partition system
- Copy room
- Break room
- Storage rooms (3)
- Restrooms (2)



Location

The building is centrally located on a main traffic artery in Sarasota, 4.5 miles off I-75, providing easy access to surrounding markets. Sarasota Bradenton International Airport is just 8.4 miles away, and Tampa International Airport is 65 miles.



Demographics



Daytime Population

5-Mile: 207,849



Population Proj. (2022-2027)

5-Mile: 2.2%



Ave. Household Income

5-Mile: \$103,603



Unemployment Rate

2.3%



Rental Apartment Vacancy

6.6%



Colliers



3000 Bee Ridge Road, Sarasota | FL

Lori Hellstrom, CCIM

Vice President | Office Services
lori.hellstrom@colliers.com
Phone: 941 504 5981

Fabienne Porter

Senior Client Service Specialist
fabienne.porter@colliers.com
Phone: 727 450 6961

Colliers

5602 Marquesas Circle, Ste. 202
Sarasota, FL 34233

This document has been prepared by Colliers for advertising and general information only. Colliers makes no guarantees, representations or warranties of any kind, expressed or implied, regarding the information including, but not limited to, warranties of content, accuracy and reliability. Any interested party should undertake their own inquiries as to the accuracy of the information. Colliers excludes unequivocally all inferred or implied terms, conditions and warranties arising out of this document and excludes all liability for loss and damages arising there from. This publication is the copyrighted property of Colliers and/or its licensor(s). Copyright © 2023. All rights reserved. This communication is not intended to cause or induce breach of an existing listing agreement. Colliers International Florida, LLC.



[colliers.com](https://www.colliers.com)

Accelerating success.