

MAJESTIC NORCROSS CENTER II

125,000 SQUARE FEET - FOR LEASE



6170 Brookhollow Parkway, Norcross, Georgia
Gwinnett County



BUILDING 1 FEATURES:

Land Size: 8.08 Acres

Office: 11,042 SF Main Office Area - 2 Story

Clear Height: 28'

Column Spacing: 42' x 42'

Loading:

20 - 9' x 10' Dock High Positions (2 Dock Levelers)

1 - 10' x 14' Drive-In Door and Ramp

Sprinkler System: ESFR

Power: 4,000 amps, 277/480 volt

Lighting: T-5

Parking: 105 autos



A Development of:



MAJESTIC REALTY CO.

Corporate Office:
13191 Crossroads Pkwy, North
Sixth Floor
City of Industry, CA 91746
(562) 692-9581

Will Lombard
wlombard@majesticrealty.com

Stan Conway
sconway@majesticrealty.com

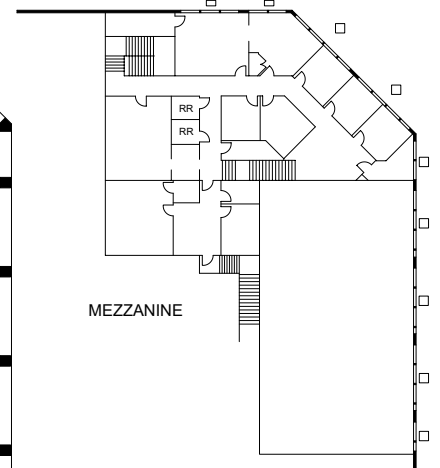
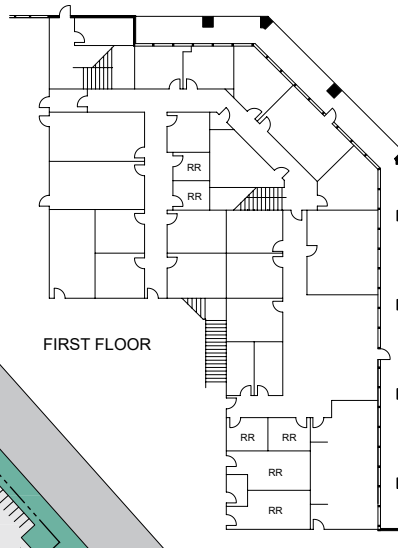
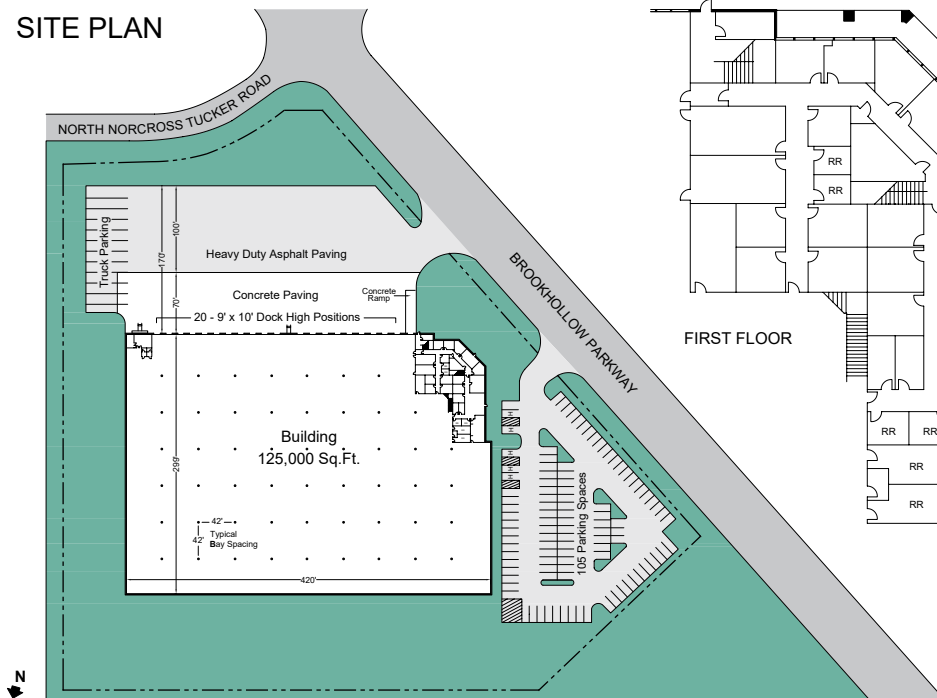
Atlanta:
3490 Piedmont Rd, NE,
Ste, 300
Atlanta, GA
(404) 467-5255

6170 Brookhollow Parkway, Norcross, GA (Gwinnett County)



- | | | |
|---|-----------------------------|-----------------|
| 1 | 1950 N. Norcross Tucker Rd. | 500,000 Sq. Ft. |
| 2 | 6250 Brookhollow Pkwy. | 180,000 Sq. Ft. |
| 3 | 2055 Nancy Hanks Blvd. | 155,000 Sq. Ft. |
| 4 | 6170 Brookhollow Pkwy. | 125,000 Sq. Ft. |

SITE PLAN



A Development of:



**MAJESTIC
REALTY CO.**

Will Lombard
wlombard@majesticrealty.com

Corporate Office:
13191 Crossroads Pkwy, North
Sixth Floor
City of Industry, CA 91746
(562) 692-9581

Stan Conway
sconway@majesticrealty.com

Atlanta:
3490 Piedmont Rd, NE,
Ste. 300
Atlanta, GA
(404) 467-5255

This statement is based upon information which we believe to be correct and is obtained from sources we regard as reliable but we assume no liability for errors or omissions therein.