

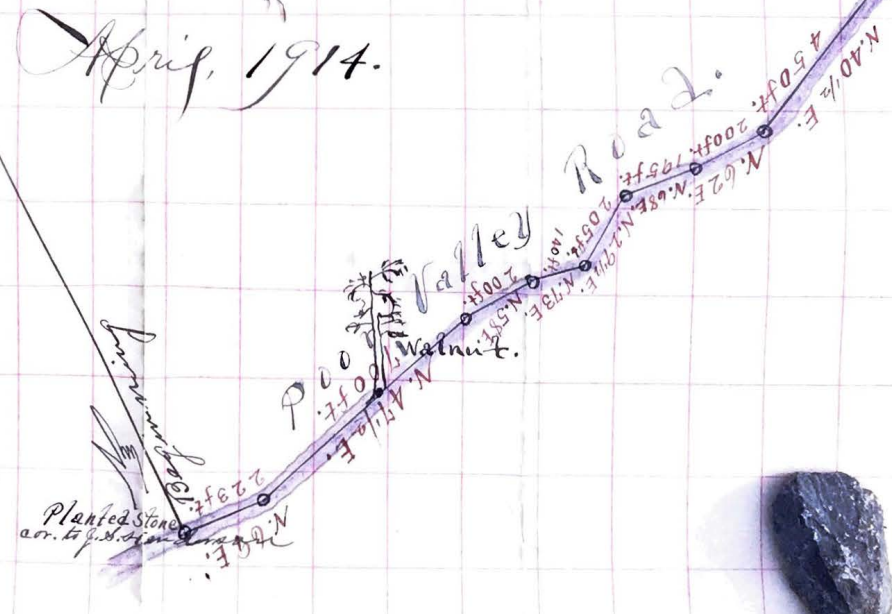
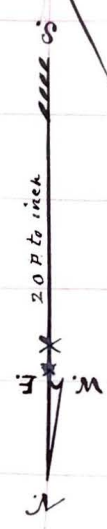


200 Acres  
 be the same more or less.

G. P. McNew's tract of land in the Poor Valley, adjoining the lands of Geo. W. Walker, J. B. Henderson & others, being the tract purchased of J. E. Litter, and is a part of the Hiram Henderson farm. The said G. P. McNew has recently had it divided in to three parts and conveyed it to three of his children by will.

W. R. Ketchum, Surveyor.

April, 1914.





M + M FARM  
 Lee  
 Shirley  
 Mitchell &  
 Manuel Dye

