

~ FOR LEASE ~

**INDUSTRIAL / STORAGE SPACE**  
**34 Del Mar Drive, Units G/H, Brookfield, CT**



**34 Del Mar Drive, Unit G & Unit H**  
**Brookfield, CT**

**Unit G: \$1,200 + Utilities & Refuse**

**Unit H(End Unit): \$1,200 + Utilities & Refuse**

**Units G + H: \$2,400 + Utilities & Refuse**

Ideal space for any industrial or storage use. Unit has gas heat, private bath, overhead door, 3 phase power. Easy access to Route 7 and I-84

Unit G Size:	+/- 1,114 Sq. Ft.
Unit H Size:	+/- 1,069 Sq. Ft.
Units G + H:	+/- 2,182 Sq. Ft.
Zone:	I-1 (Industrial)
Year Built:	1973
Ceiling Height:	+/- 9 Ft.
Plumbing:	Private Bath
Electrical:	3 Phase Power
Loading:	8 Ft. Overhead Door
Heating:	Gas Heat
Utilities:	Well and Sewer



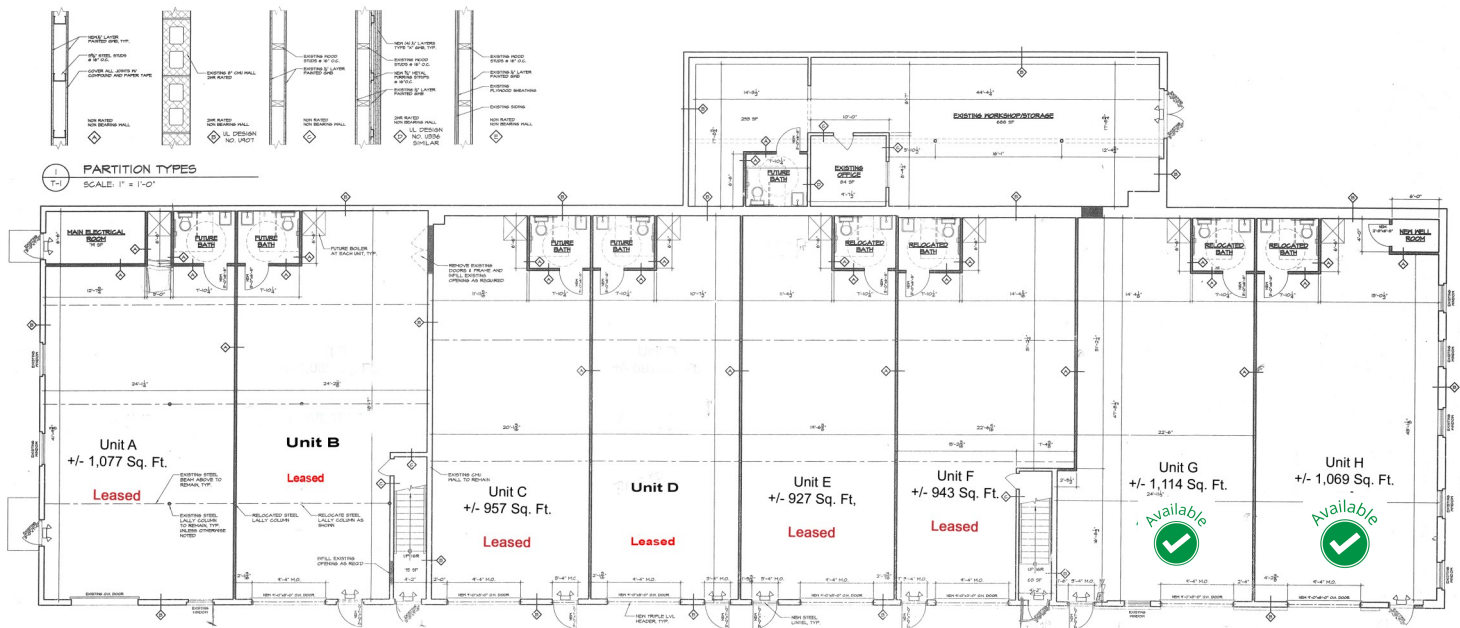
**Mick Consalvo**  
203.241-5188  
mconsalvo@towercorp.com

Tower Realty Corp. / 246 Federal Rd., Suite D26, Brookfield, CT 06804 / [www.towercorp.com](http://www.towercorp.com)  
203-775-5000 Office / 203-546-7793 Fax

No warranty of representation, expressed or implied is made as to the accuracy of the information contained herein, and same is submitted subject to errors, omissions, change of price, rental, sale or other conditions, withdrawal without notice, and to any special listing conditions imposed by our principals.

# BUILDING LAYOUT

34 DEL MAR DRIVE, UNIT B  
BROOKFIELD, CT



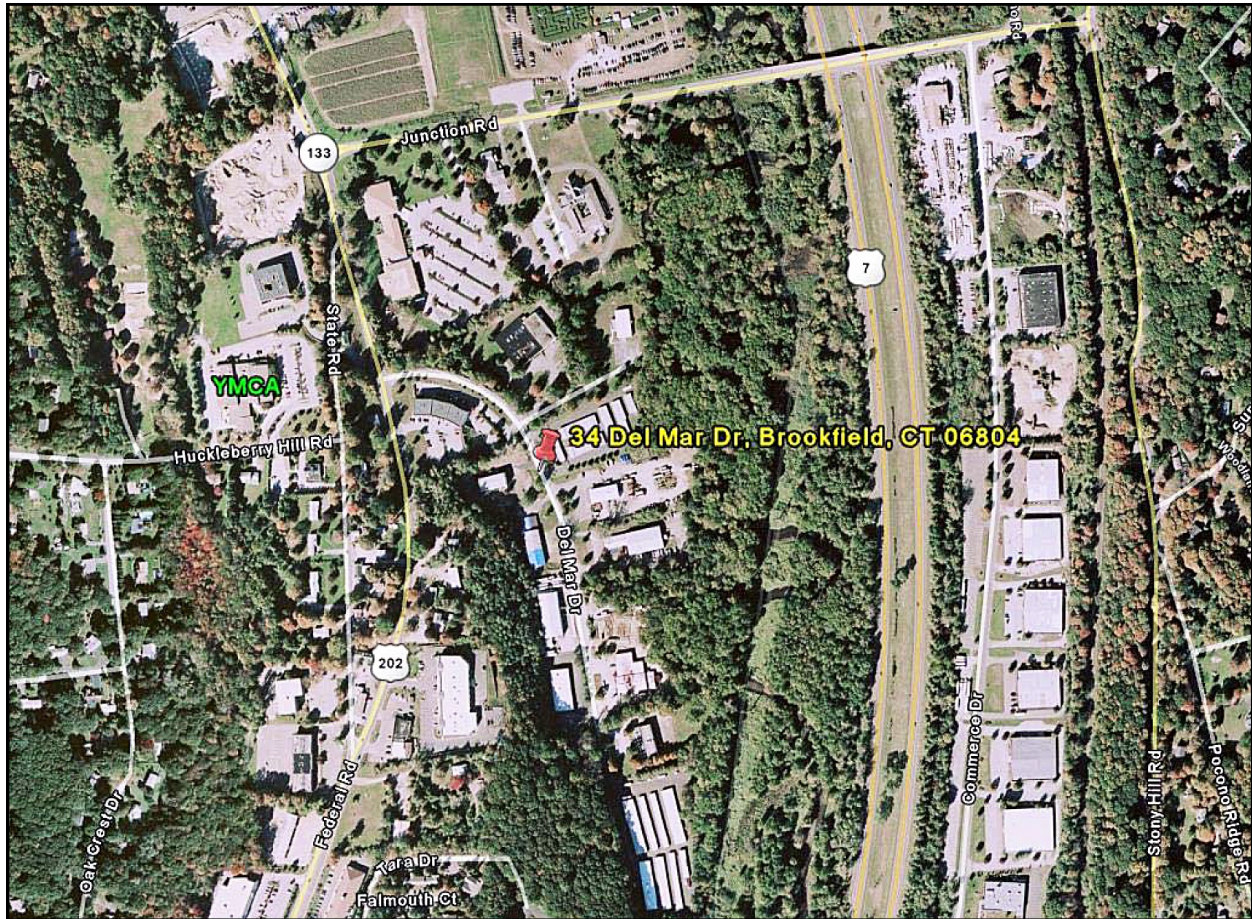
**Mick Consalvo**  
203.241-5188  
mconsalvo@towercorp.com

## LOCATION MAPS

34 DEL MAR DRIVE,  
BROOKFIELD, CT



TOWER REALTY CORP.



**Mick Consalvo**  
203.241-5188  
mconsalvo@towercorp.com