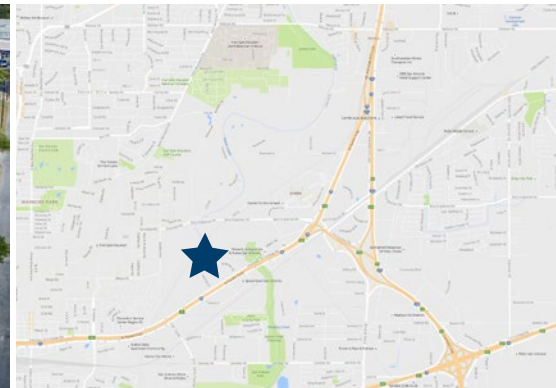
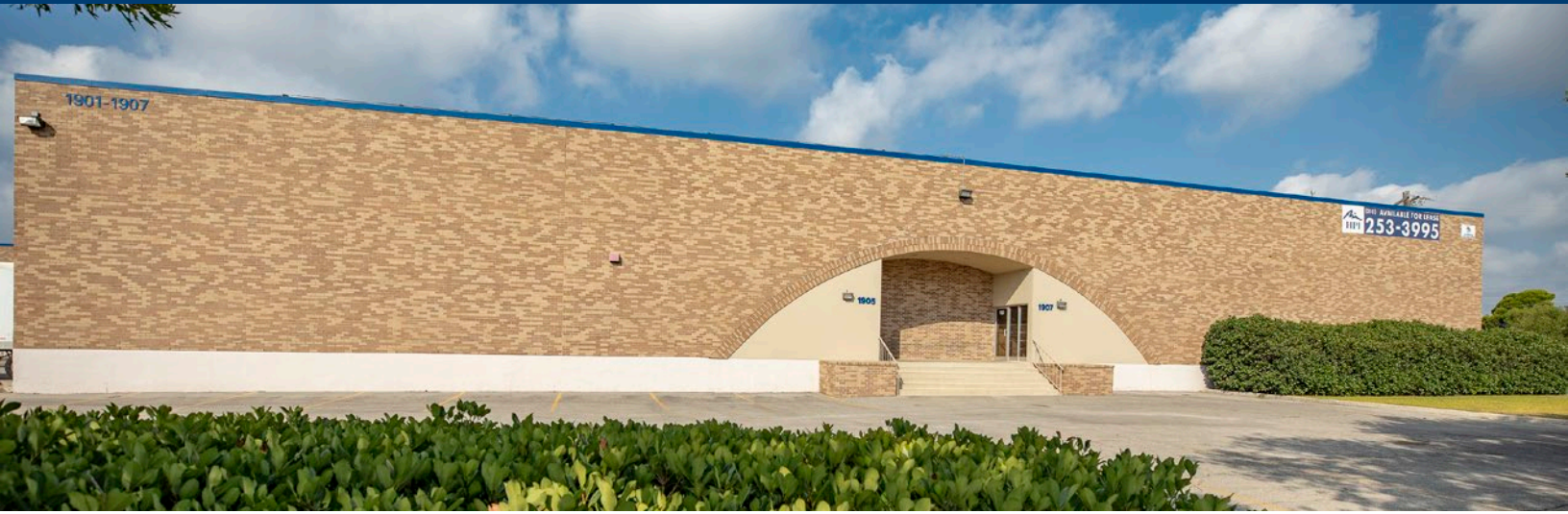




# I-35 SAN ANTONIO 4

1901 Shipman Drive - San Antonio, TX 78219



## Available Space

Suite	RSF
1901-A	31,500

## Building Features



85% Warehouse



15% Office



Front Loading



21' Clear Height



3 Dock High Doors,  
1 Loading Ramp



25'x45' Column Spacing



Fenced-In Yard with  
Outside Storage

**MORRIS GREEN**  
(210) 253-3996  
mgreen@hpitx.com

No warranty or representation, expressed or implied, is made as to the accuracy of the information contained herein, and same is submitted subject to errors, omissions, change of price, rental or other conditions, withdrawal without notice, and to any special listing conditions imposed by the principals.



# I-35 SAN ANTONIO 4

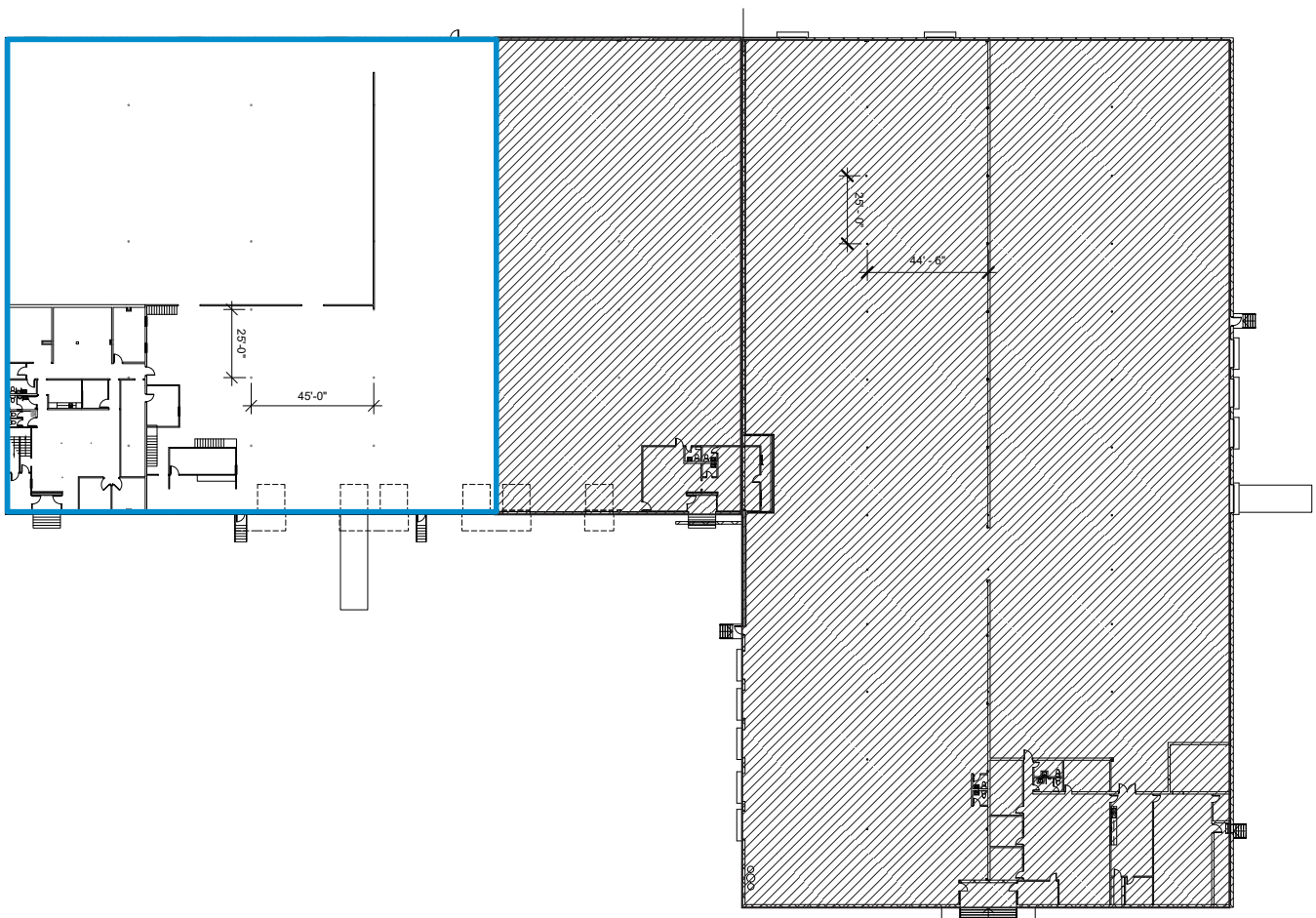
1901 Shipman Drive - San Antonio, TX 78219

## SUITE 1901A 31,500 SF OFFICE/WAREHOUSE

AVAILABLE NOW

AVAILABLE SF

SPACE TYPE



**MORRIS GREEN**  
(210) 253-3996  
[mgreen@hpitx.com](mailto:mgreen@hpitx.com)

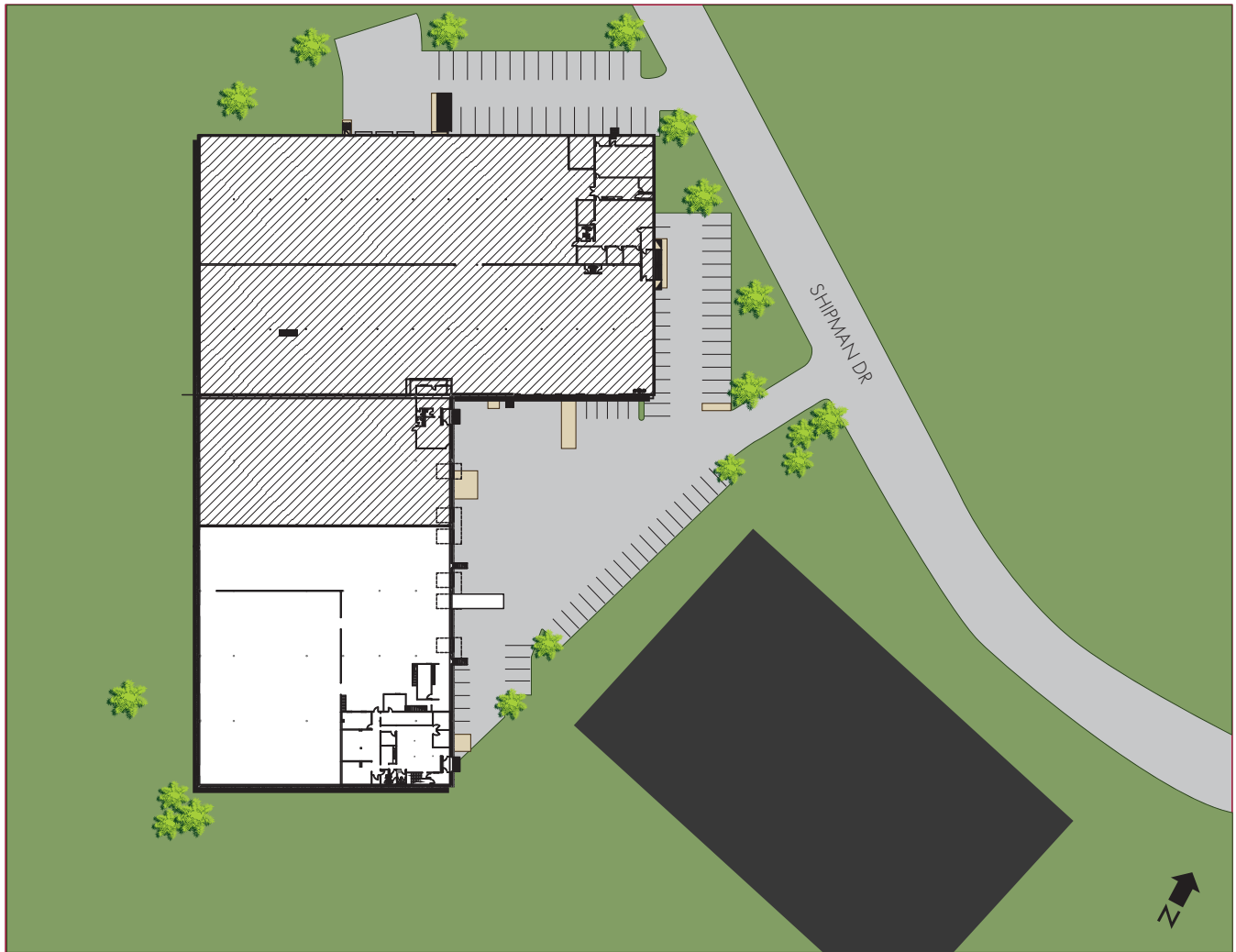
No warranty or representation, expressed or implied, is made as to the accuracy of the information contained herein, and same is submitted subject to errors, omissions, change of price, rental or other conditions, withdrawal without notice, and to any special listing conditions imposed by the principals.



# I-35 SAN ANTONIO 4

1901 Shipman Drive - San Antonio, TX 78219

**SUITE 1901A**    **31,500 SF**    **OFFICE/WAREHOUSE**  
AVAILABLE NOW                      AVAILABLE SF                      SPACE TYPE



**MORRIS GREEN**  
(210) 253-3996  
[mgreen@hpitx.com](mailto:mgreen@hpitx.com)

No warranty or representation, expressed or implied, is made as to the accuracy of the information contained herein, and same is submitted subject to errors, omissions, change of price, rental or other conditions, withdrawal without notice, and to any special listing conditions imposed by the principals.