

LAND FOR SALE
297 Nat Turner Boulevard
 Newport News, Virginia

Property Features

- Signalized corner location, great visibility
- Located opposite entrance to Port Warwick
- 1.33 total acres
- Approximately 140' frontage by a depth of 315'
- Zoning: R-9 Mixed Use District
- Delineation completed August 2018 – no wetlands
- Sales Price: \$ 1,200,000.



For more information, contact:

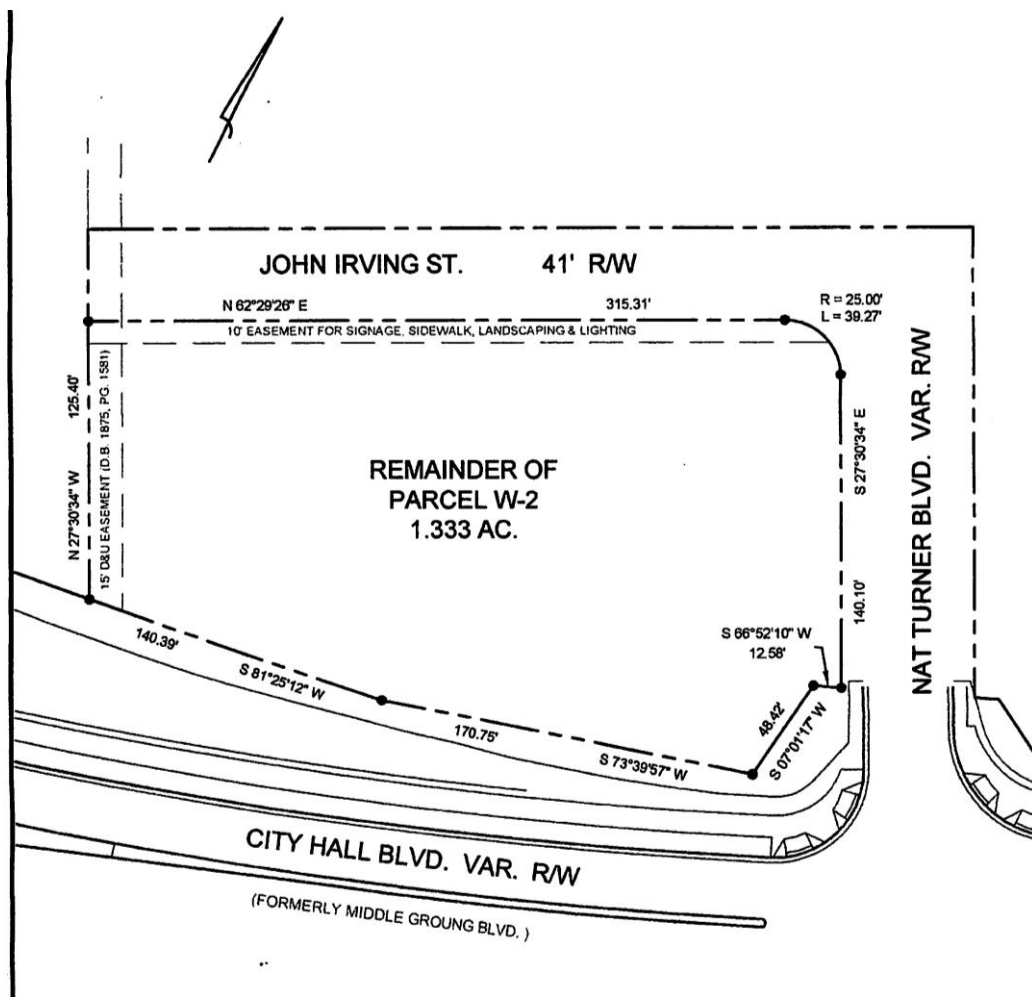
KENNETH PENROSE, JR.
 Vice President
 757 596 3704
ken.penrose@thalhimer.com

TERESA NETTLES
 Senior Vice President
 757 873 9268
teresa.nettles@thalhimer.com

One BayPort Way, Suite 100
 Newport News, VA 23606
www.thalhimer.com

LAND FOR SALE
297 Nat Turner Boulevard
Newport News, Virginia

PLAT



For more information, contact:

KENNETH PENROSE, JR.
Vice President
757 596 3704
ken.penrose@thalhimer.com

TERESA NETTLES
Senior Vice President
757 873 9268
teresa.nettles@thalhimer.com

One BayPort Way, Suite 100
Newport News, VA 23606
www.thalhimer.com