

Hurricane Shoals Road, NW

Lawrenceville, GA 30046

5.81 Acres

Land for Sale

Gwinnett



Property Highlights

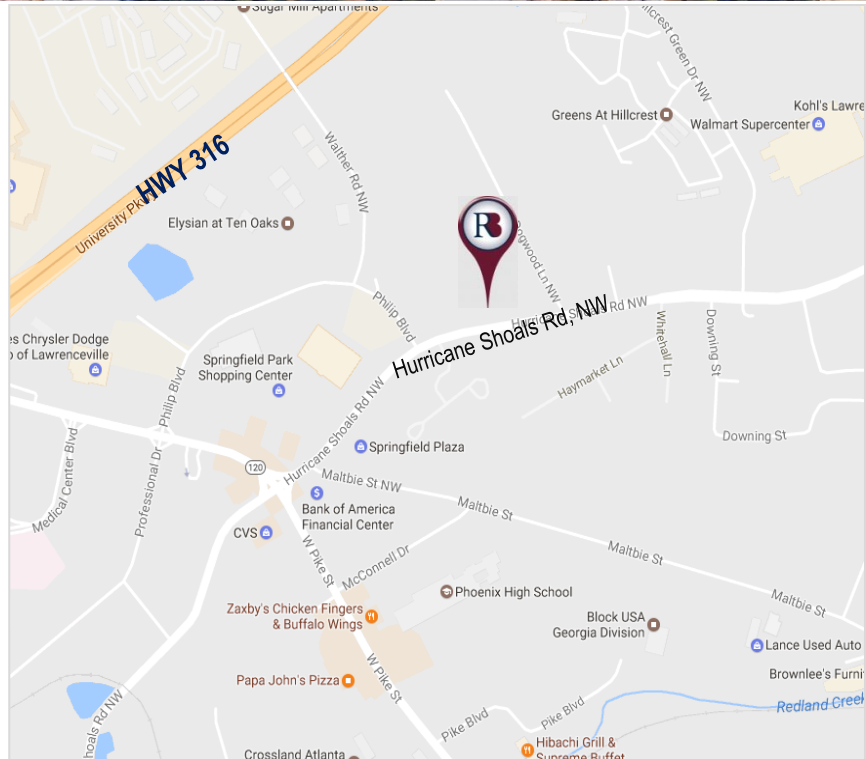
- Price: \$1,452,500.00/\$250,000.00 per Acre
- Approximately 5.81 Acres
- All Utilities Available
- Combined Frontage: 414' on Hurricane Shoals Road, NW
- Zoning: O&I- Office & Institutional
- Level Topography
- Located just off Hwy 316 & Duluth Hwy 120, next to Springfield Park Shopping Center and Gwinnett Medical Center, Lawrenceville
- Excellent Lawrenceville Amenities & Access to Hwy 316

Exclusive Agent

Tarkenton Thompson

404.816.1600 Ext. 140

thompson@richardbowers.com



Richard Bowers & Co.
Real Estate



www.richardbowers.com

260 Peachtree Street, Suite 2400, Atlanta, GA 30303 | Phone (404) 816-1600 | Fax (404) 880-0077

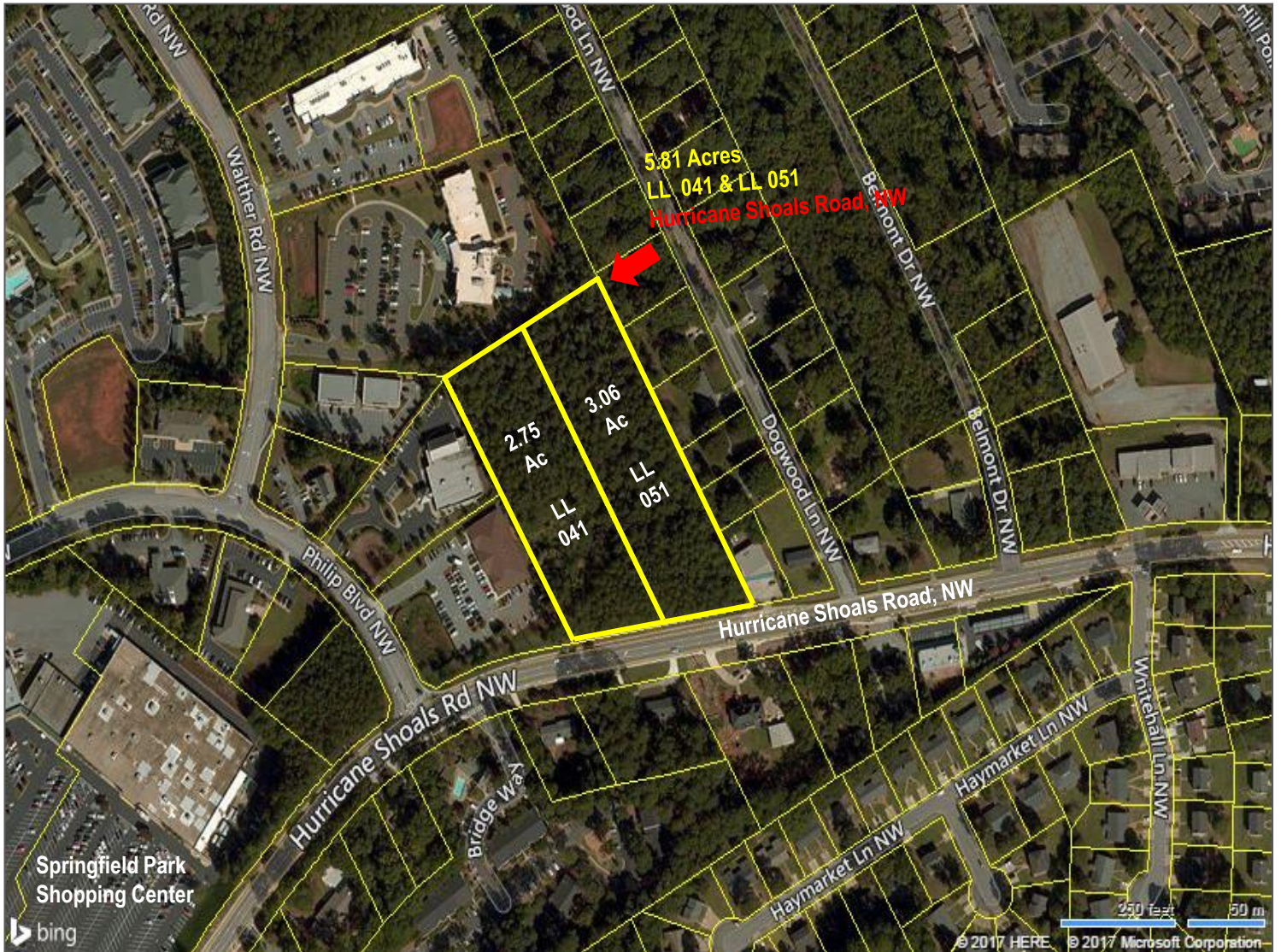
The information contained herein has been received from sources deemed reliable but no liability is assumed by Richard Bowers & Co. or its agents for errors or omissions.



Hurricane Shoals Road, NW

Lawrenceville, GA 30046

Plat Map- 5.81 Acres



Exclusive Agent

Tarkenton Thompson

404.816.1600 Ext. 140

tthompson@richardbowers.com

www.richardbowers.com



Richard Bowers & Co.
Real Estate



260 Peachtree Street, Suite 2400, Atlanta, GA 30303 | Phone (404) 816-1600 | Fax (404) 880-0077

The information contained herein has been received from sources deemed reliable but no liability is assumed by Richard Bowers & Co. or its agents for errors or omissions.