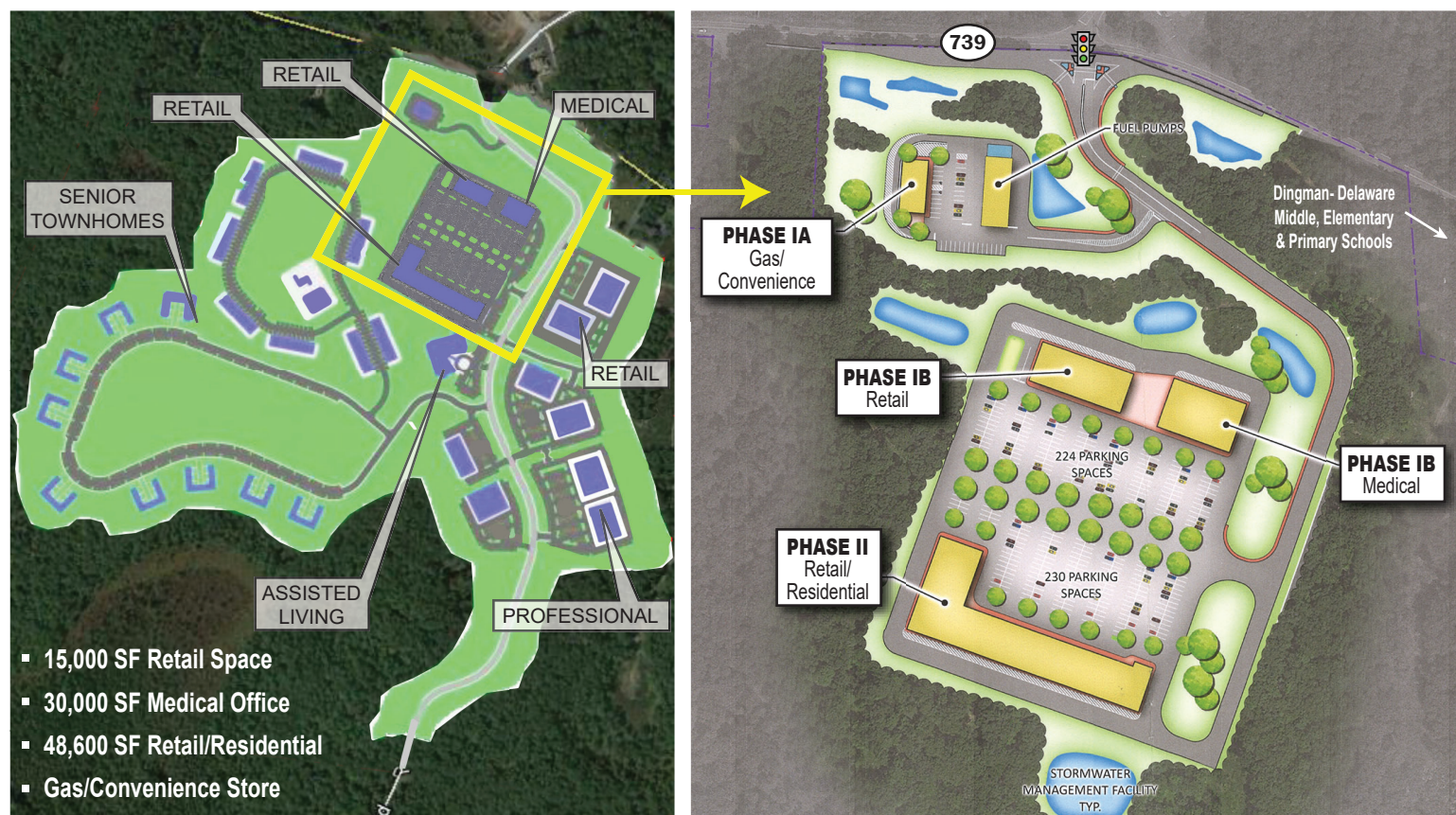
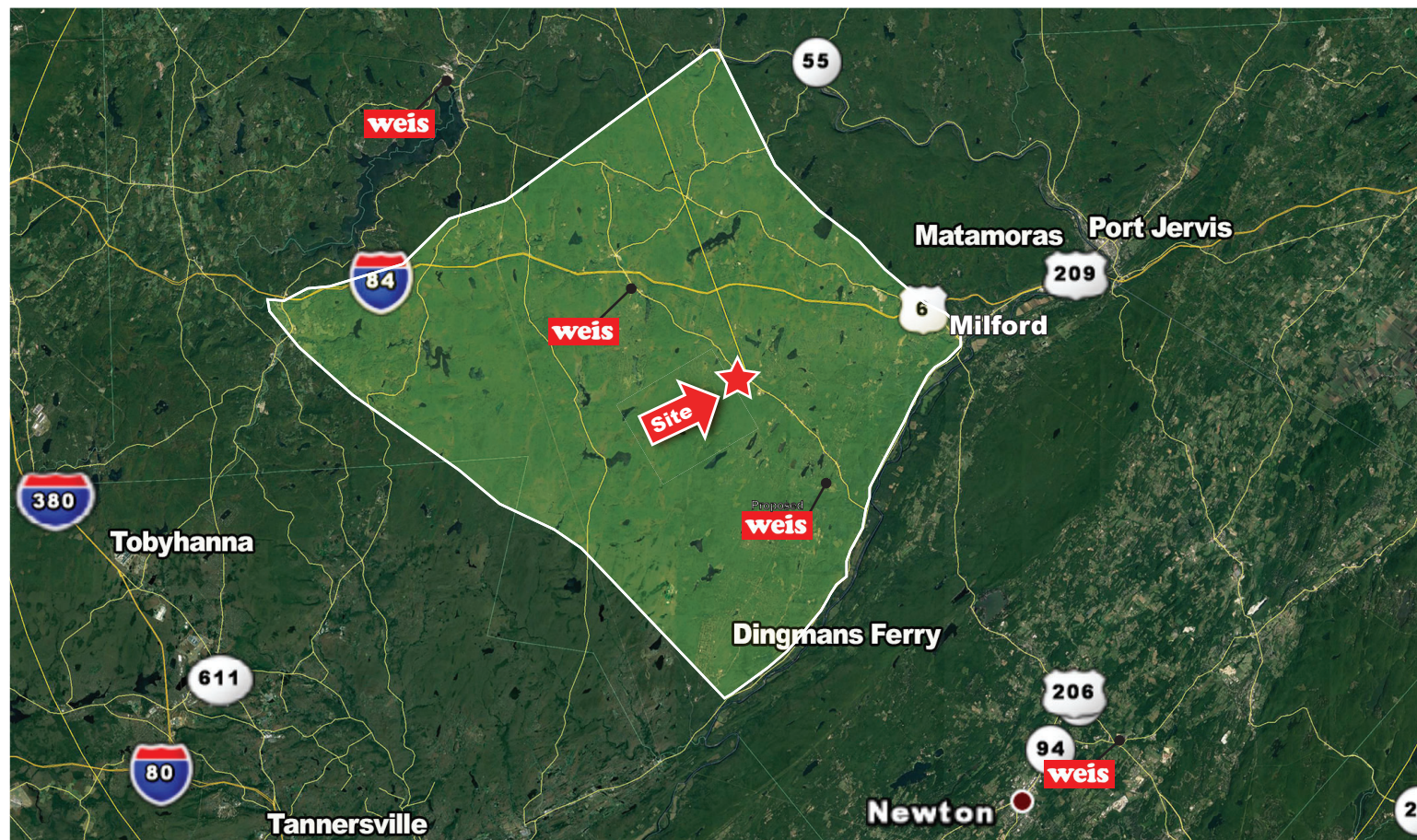


DINGMAN TOWNE CENTRE

Route 739 & Log Tavern Road | Dingman Township | 18328



LEGEND PROPERTIES, INC.

DINGMAN TOWNE CENTRE

Route 739 & Log Tavern Road | Dingman Township | 18328

New Mixed-use Development!



Excellent Medical Office Opportunity

PROPERTY HIGHLIGHTS

- 280 acre mixed-use development featuring medical, retail & residential uses
- Located across from Wells Fargo at new proposed traffic signal and next to Dingman Elementary and Primary Schools
- Pike County has been ranked as the fastest growing county in Pennsylvania in population percentage growth with over 13,000 households in the trade area
- Located five miles from historic Milford
- Opportunities available for residential, assisted living, senior townhomes and multifamily



DEMOGRAPHICS (*)

	Trade Area
Population	34,007
Average HH Income	\$ 70,852
Total Businesses	668
Number of Employees	4,832

* Data Source: AGS™

CONTACT:

James DePetris
Legend Properties, Inc.
jdepetris@lpre.com
610-941-4034 Ext. 108

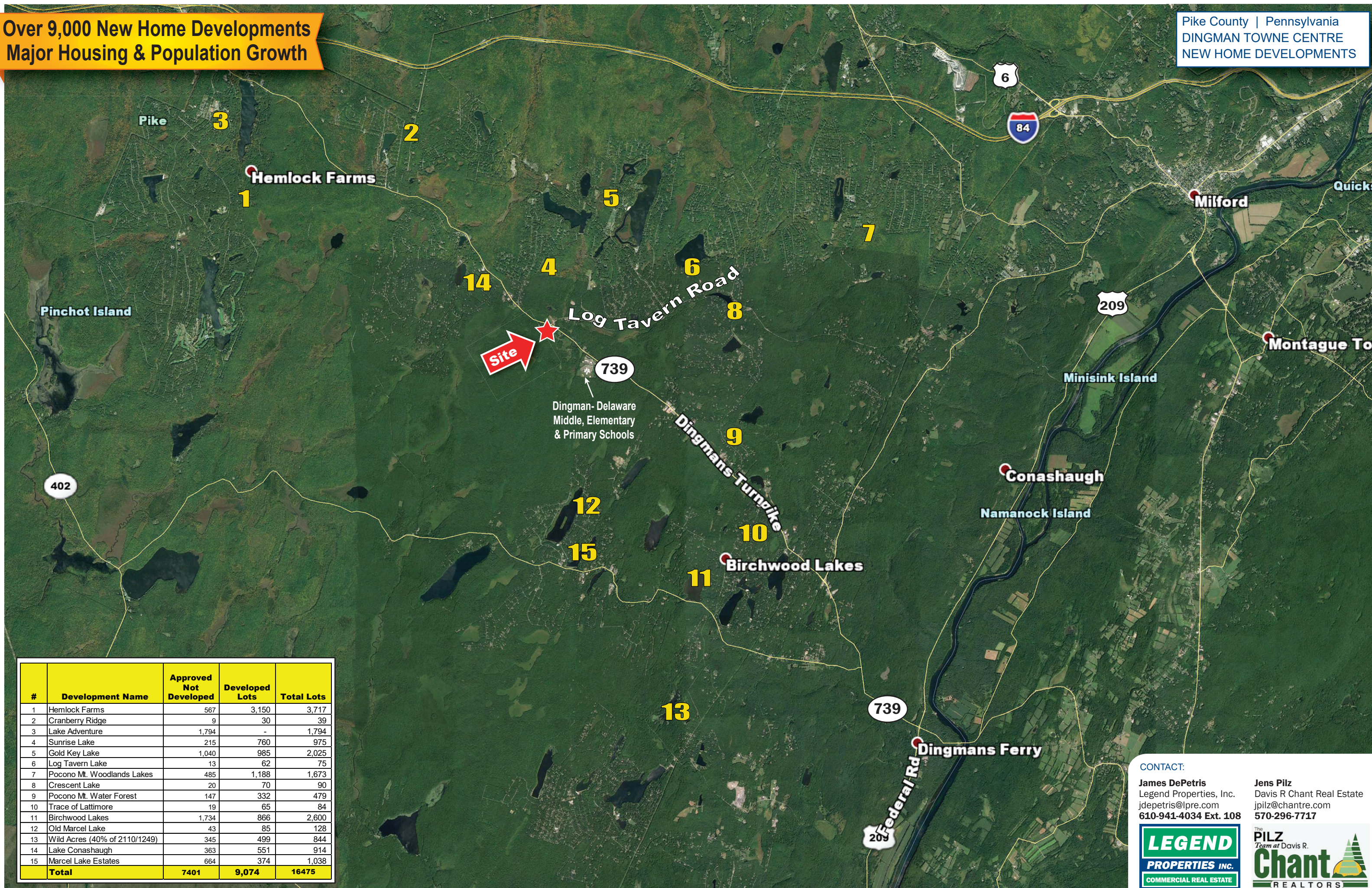
Jens Pilz
Davis R Chant Real Estate
jpilz@chantre.com
570-296-7717



T: 610-941-4034 | F: 610-941-4038 | LPRE.COM
580 W. Germantown Pike, Suite 103 • Plymouth Meeting, PA 19462

**Over 9,000 New Home Developments
Major Housing & Population Growth**

Pike County | Pennsylvania
**DINGMAN TOWNE CENTRE
NEW HOME DEVELOPMENTS**



#	Development Name	Approved Not Developed	Developed Lots	Total Lots
1	Hemlock Farms	567	3,150	3,717
2	Cranberry Ridge	9	30	39
3	Lake Adventure	1,794	-	1,794
4	Sunrise Lake	215	760	975
5	Gold Key Lake	1,040	985	2,025
6	Log Tavern Lake	13	62	75
7	Pocono Mt. Woodlands Lakes	485	1,188	1,673
8	Crescent Lake	20	70	90
9	Pocono Mt. Water Forest	147	332	479
10	Trace of Lattimore	19	65	84
11	Birchwood Lakes	1,734	866	2,600
12	Old Marcel Lake	43	85	128
13	Wild Acres (40% of 2110/1249)	345	499	844
14	Lake Conashaugh	363	551	914
15	Marcel Lake Estates	664	374	1,038
Total		7401	9,074	16475

CONTACT:

James DePetris
Legend Properties, Inc.
jdepetris@lpre.com
610-941-4034 Ext. 108

Jens Pilz
Davis R Chant Real Estate
jpilz@chantre.com
570-296-7717

