



# COLMAN BUILDING

811 FIRST AVENUE  
SEATTLE, WASHINGTON

[www.colmanbuilding.com](http://www.colmanbuilding.com)

**Cavan O'Keefe**

206.395.2903

[cavan.okeefe@ngkf.com](mailto:cavan.okeefe@ngkf.com)

**David Marks**

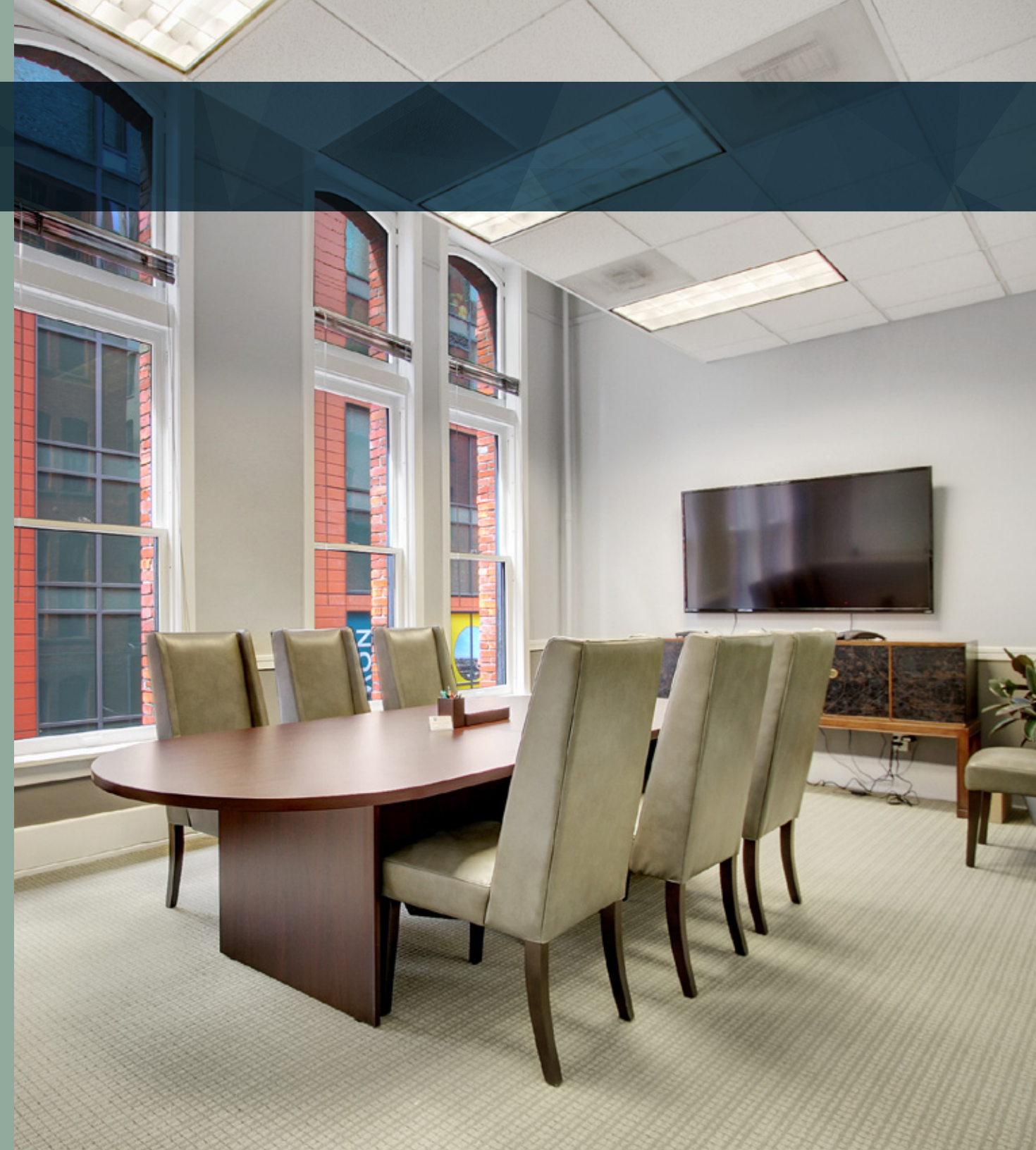
425.753.6759

[david.marks@ngkf.com](mailto:david.marks@ngkf.com)

NEWMARK

# BUILDING HIGHLIGHTS

- ◆ Historic building updated with modern conveniences
- ◆ Common kitchen facility
- ◆ Operable windows throughout
- ◆ Excellent access to I-5, Metro buses and Water taxi
- ◆ Direct access to the Colman ferry dock via skybridge
- ◆ Numerous restaurants and retail amenities within walking distance
- ◆ Direct access to the revitalized waterfront
- ◆ On-site building management
- ◆ Building conference room
- ◆ Showers & secure bike storage
- ◆ Starbucks, Quiznos, and UPS Store on site



BRAND NEW FINISHES  
& SPEC SUITES  
AVAILABLE FOR  
IMMEDIATE  
OCCUPANCY!



# CURRENT AVAILABILITIES

\* SPEC SUITE

SPACE	SIZE	AVAILABILITY
<a href="#"><u>Suite 105</u></a>	3,116 SF	Plug and play Furniture available
<a href="#"><u>Suite 200*</u></a>	2,869 SF	Available now
<a href="#"><u>Suite 201*</u></a>	1,469 SF	Available now
<a href="#"><u>Suite 300</u></a>	1,595 SF	Available May 2021
<a href="#"><u>Suite 350</u></a>	681 SF	Available Oct 2021
<a href="#"><u>Suite 380</u></a>	3,735 SF	Available June 2021
<a href="#"><u>Suite 454*</u></a>	756 SF	Available now
<a href="#"><u>Suite 456*</u></a>	1,631 SF	Available now
<a href="#"><u>Suite 457</u></a>	674 SF	Available July 2021
<a href="#"><u>Suite 475*</u></a>	504 SF	Available now
<a href="#"><u>Suite 480</u></a>	3,874 SF	Available April 2021
<a href="#"><u>Suite 510</u></a>	2,078 SF	Available June 2021
<a href="#"><u>Suite 520</u></a>	2,085 SF	Available now
<a href="#"><u>Suite 525</u></a>	2,191 SF	Available now
<a href="#"><u>Suite 530</u></a>	2,221 SF	Available now
<a href="#"><u>Suite 535</u></a>	1,378 SF	Available now
<a href="#"><u>Suite 555</u></a>	710 SF	Available June 2021
<a href="#"><u>Suite 560</u></a>	271 SF	Available now
<a href="#"><u>Suite 570</u></a>	6,526 SF	Divisible
<a href="#"><u>Suite 615*</u></a>	1,723 SF	Available now
<a href="#"><u>Suite 640</u></a>	1,439 SF	Available now



CLICK ON SUITE NUMBER  
TO VIEW VIRTUAL TOUR



**BRAND NEW FINISHES  
& SPEC SUITES  
AVAILABLE FOR  
IMMEDIATE  
OCCUPANCY!**

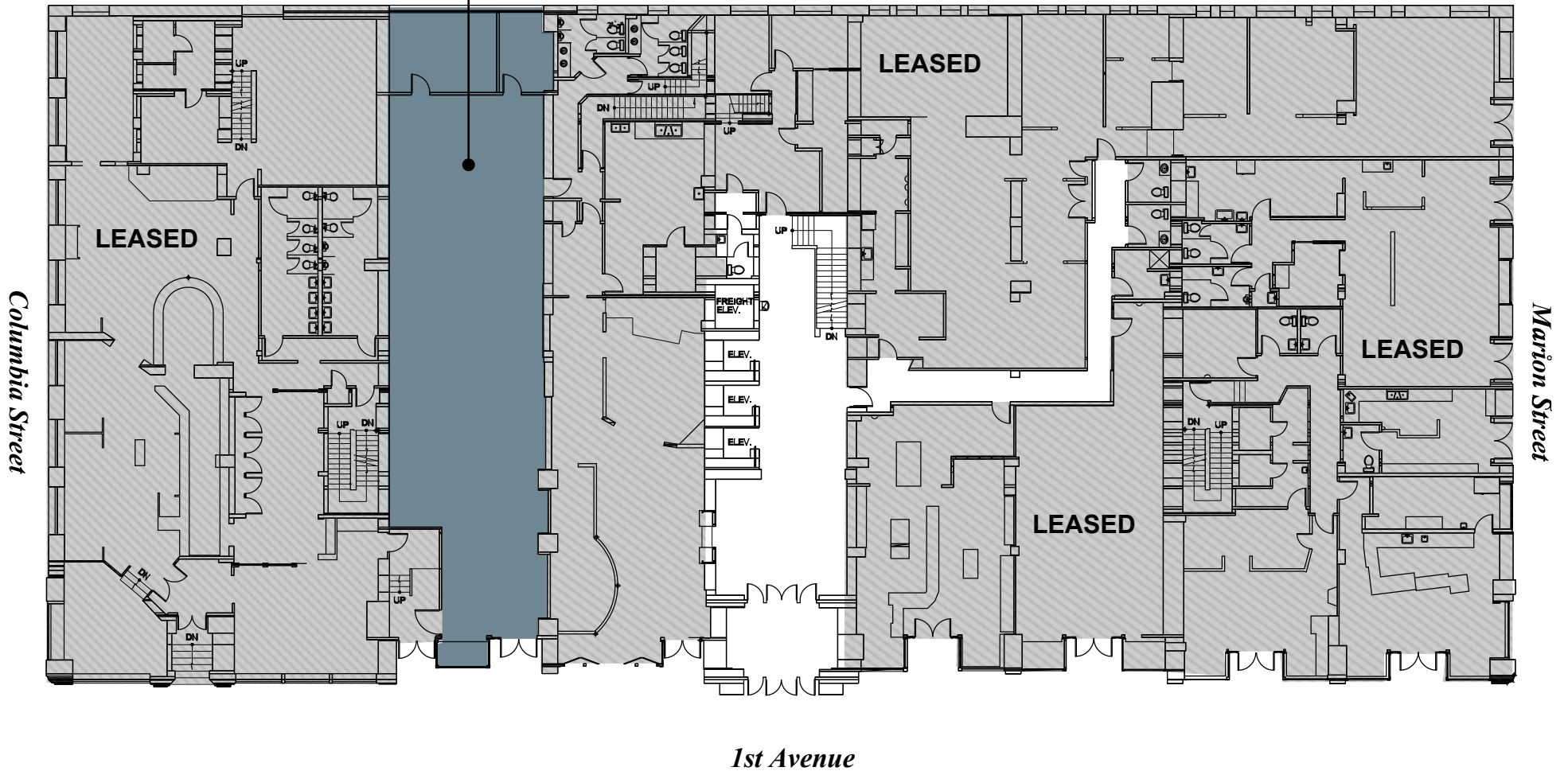


# BUILDING FLOORPLANS

 **CLICK ON SUITE TO  
VIEW VIRTUAL TOUR**

**SUITE 105**

3,116 SF

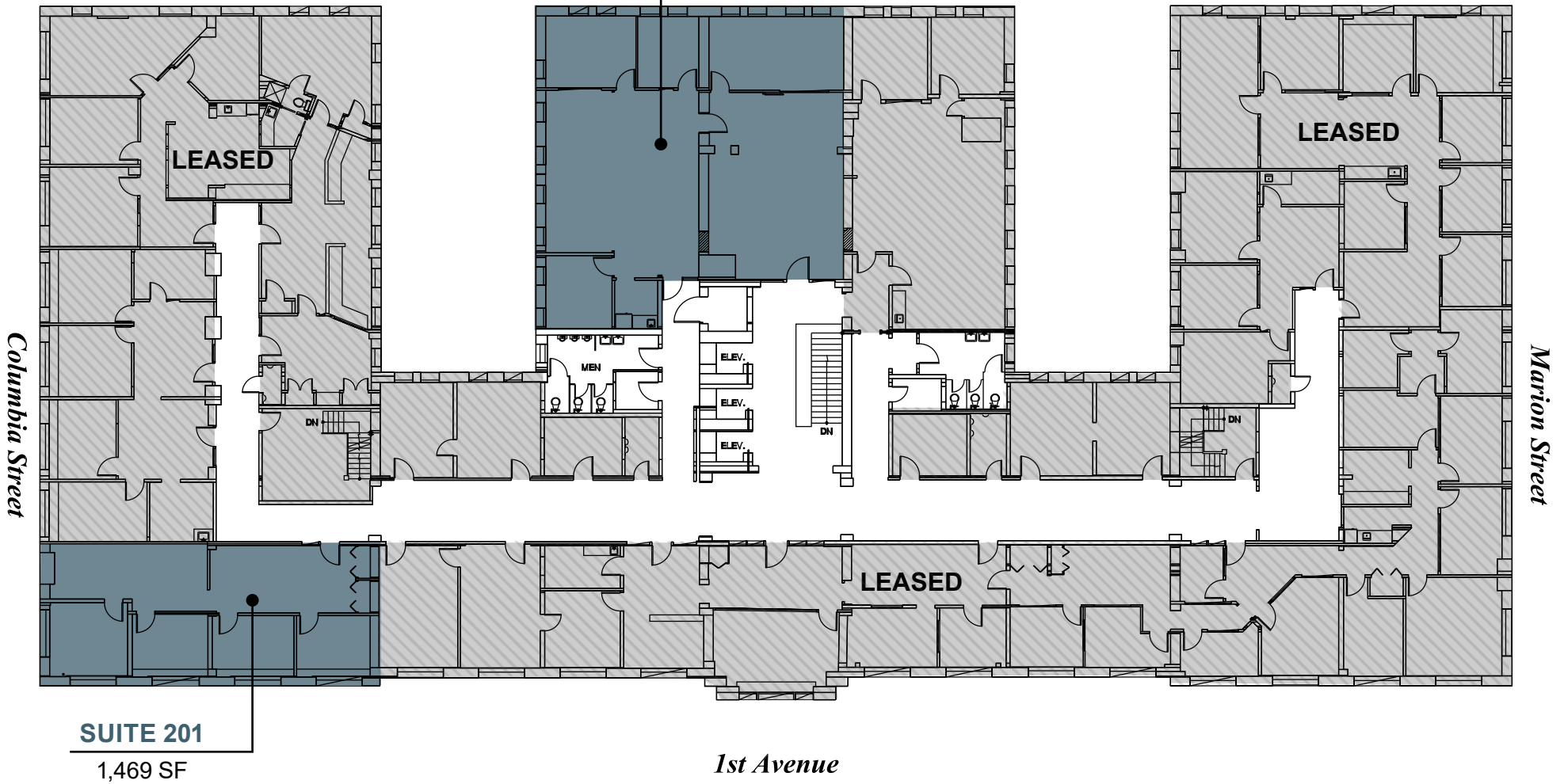


# BUILDING FLOORPLANS

 [CLICK ON SUITE TO VIEW VIRTUAL TOUR](#)

**SUITE 200**  
2,869 SF

*Post Alley*



**SUITE 201**  
1,469 SF

*1st Avenue*

# BUILDING FLOORPLANS

**SUITE 380**  
3,735 SF

 **CLICK ON SUITE TO  
VIEW VIRTUAL TOUR**



**SUITE 300**  
1,595 SF

**SUITE 350**  
681 SF

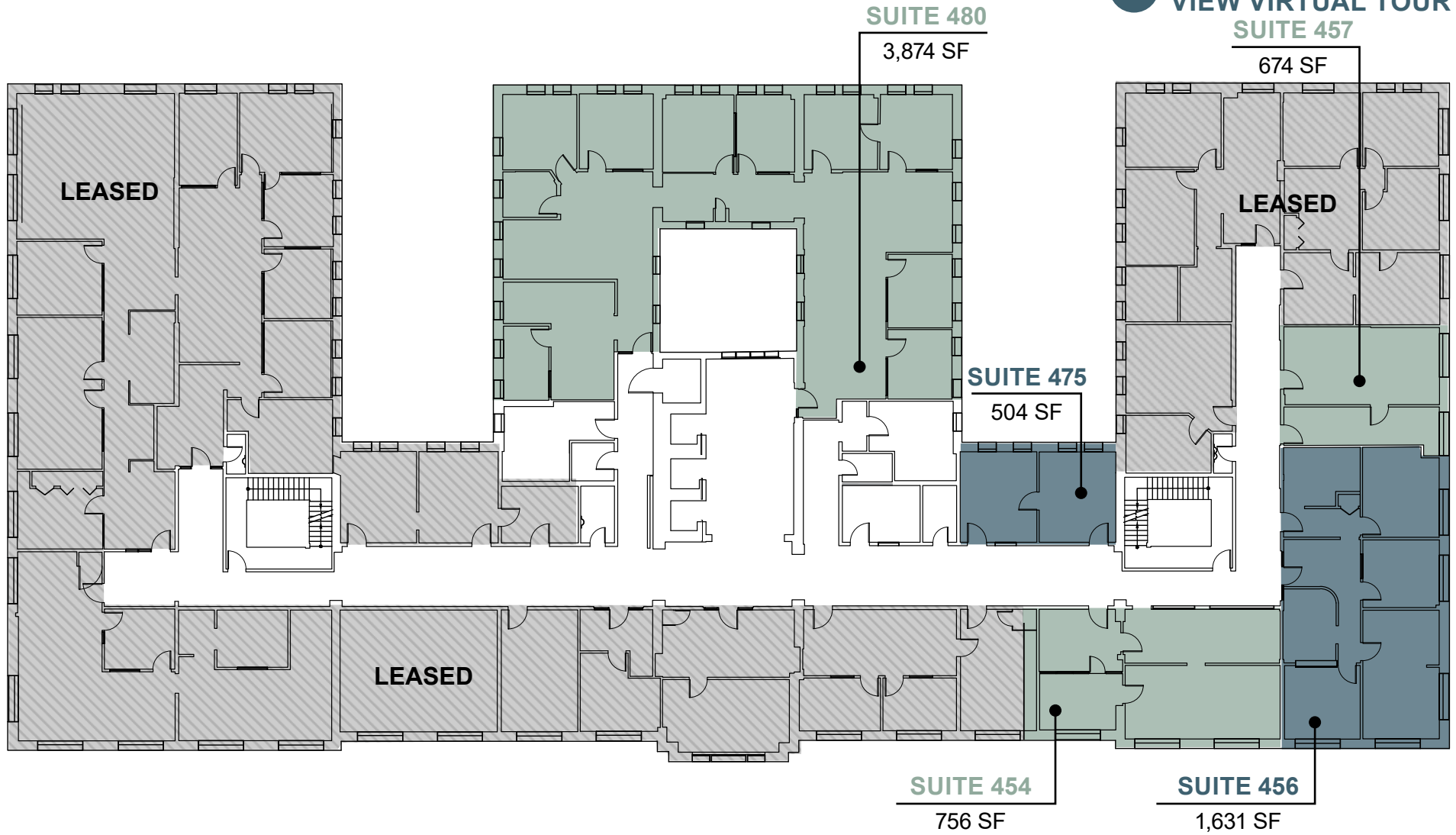
**LEASED**

**LEASED**

**LEASED**

# BUILDING FLOORPLANS

 **CLICK ON SUITE TO  
VIEW VIRTUAL TOUR**





# BUILDING FLOORPLANS

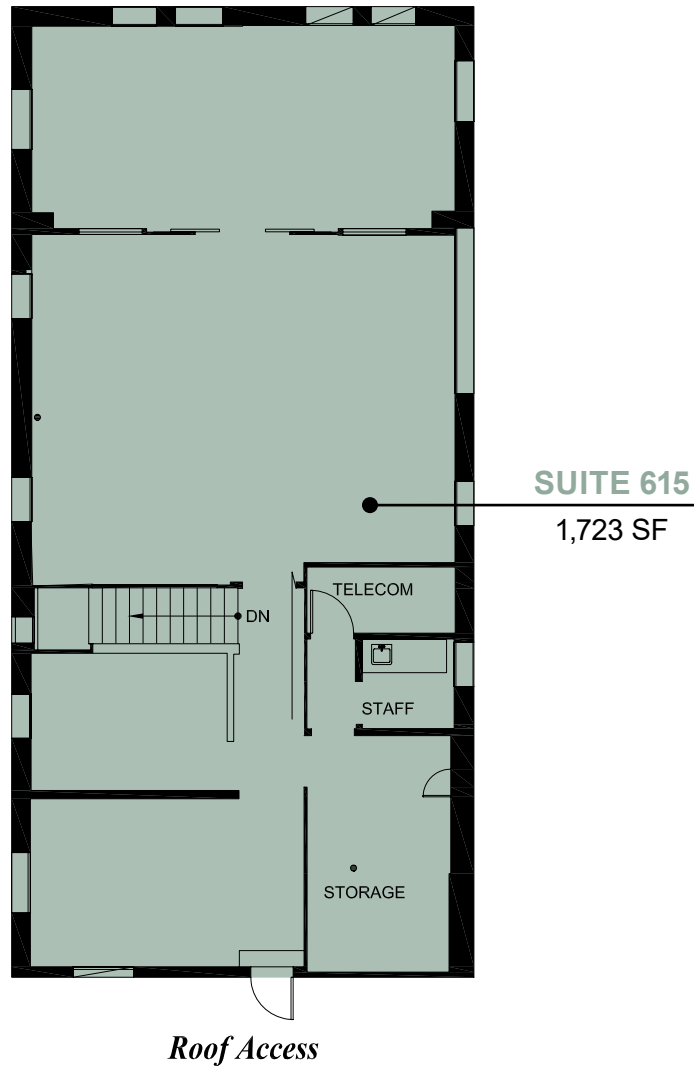
 **CLICK ON SUITE TO  
VIEW VIRTUAL TOUR**






# BUILDING FLOORPLANS

 **CLICK ON SUITE TO  
VIEW VIRTUAL TOUR**







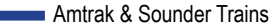
# TRANSPORTATION & AMENITIES MAP

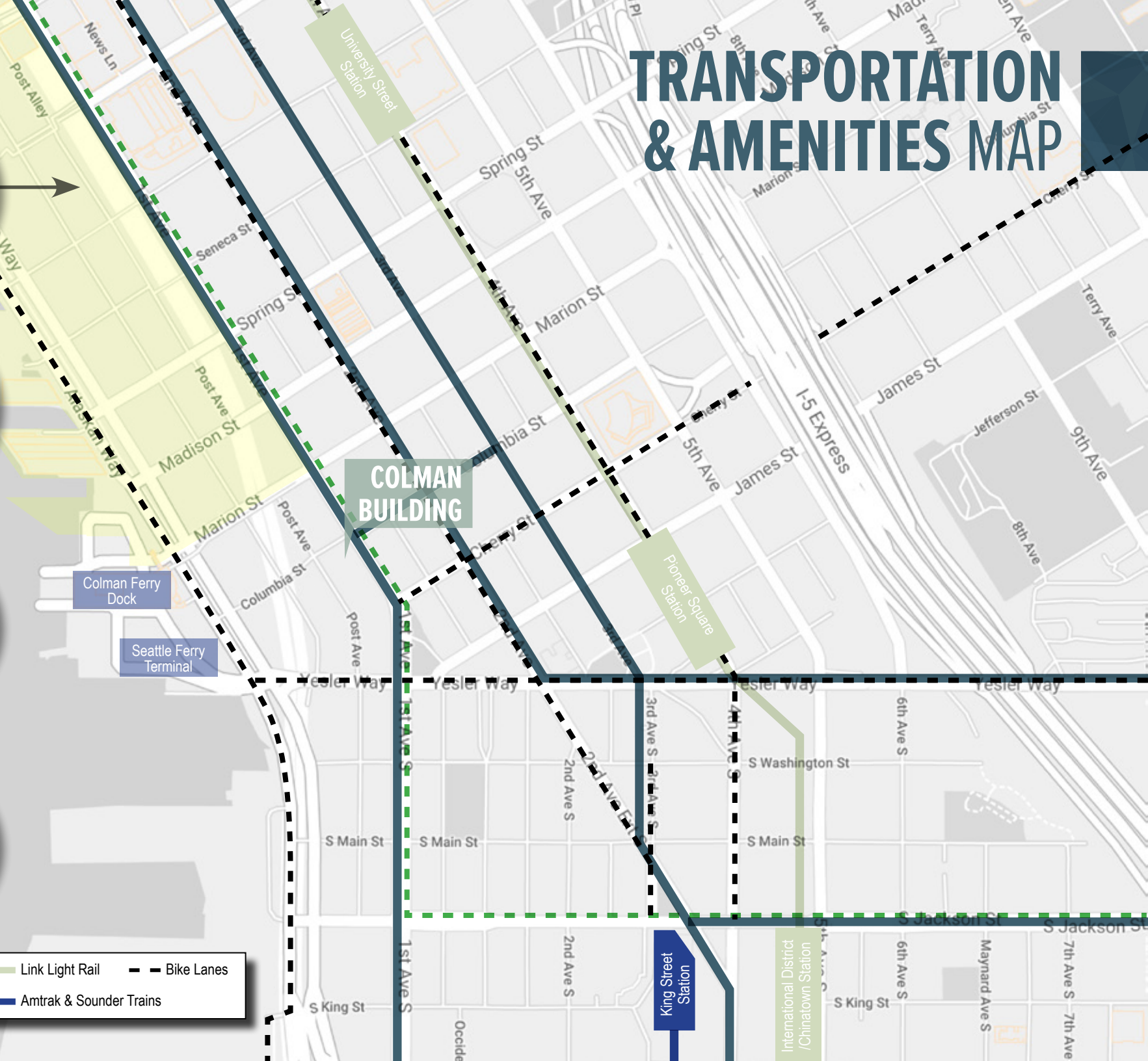
  
**WATERFRONT REVITALIZATION**  
Est. completion 2022-2023

  
**50+**  
RESTAURANTS  
within 3 blocks

  
**10+**  
COFFEE SHOPS  
within 3 blocks

  
**12**  
HOTELS  
within 1 mile

 Major Bus Lines     Link Light Rail     Bike Lanes  
 Seattle Street Car     Amtrak & Sounder Trains



[www.colmanbuilding.com](http://www.colmanbuilding.com)

# COLMAN BUILDING

811 FIRST AVENUE  
SEATTLE , WASHINGTON

**NEWMARK**

**Cavan O'Keefe**  
206.395.2903  
[cavan.okeefe@ngkf.com](mailto:cavan.okeefe@ngkf.com)

**David Marks**  
425.753.6759  
[david.marks@ngkf.com](mailto:david.marks@ngkf.com)

The distributor of this communication is performing acts for which a real estate license is required. The information contained herein has been obtained from sources deemed reliable but has not been verified and no guarantee, warranty or representation, either express or implied, is made with respect to such information. Terms of sale or lease and availability are subject to change or withdrawal without notice. 18-1023\_5/19