

# LAKE NONA TOWN CENTER I

6900 Tavistock Lakes Boulevard  
Orlando, FL 32827

Lake Nona Town Center Phase I includes an 85,000 SF  
office building with plaza-view restaurant space.



**TAVISTOCK**

DEVELOPMENT COMPANY

Tavistock Development Company  
6900 Tavistock Lakes Blvd, Suite 200  
Orlando, FL 32827  
TavistockDevelopment.com

**OFFICE SPACE  
AVAILABLE**

For more information, please contact:

**GINGER VETTER**

direct: 407.816.6686

cell: 407.619.5245

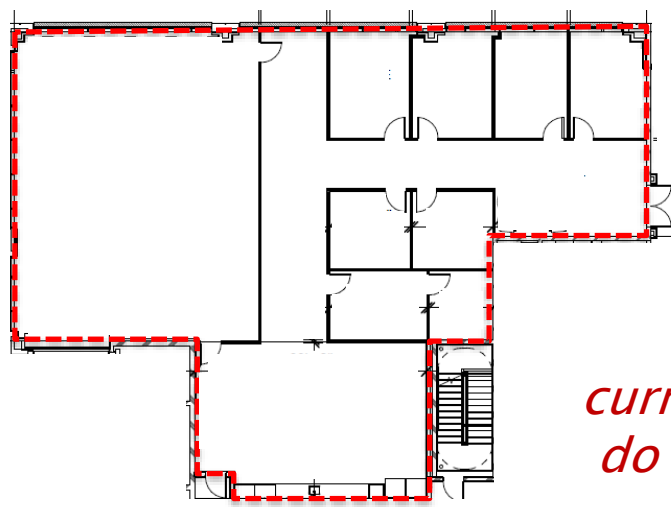
gvetter@tavistock.com

# LAKE NONA TOWN CENTER I

1<sup>ST</sup> FLOOR

Tavistock Lakes Blvd

Lake Nona Blvd



*NOTE: Space is currently leased; please do not contact tenant.*

5,383± RSF



**TAVISTOCK**  
DEVELOPMENT COMPANY

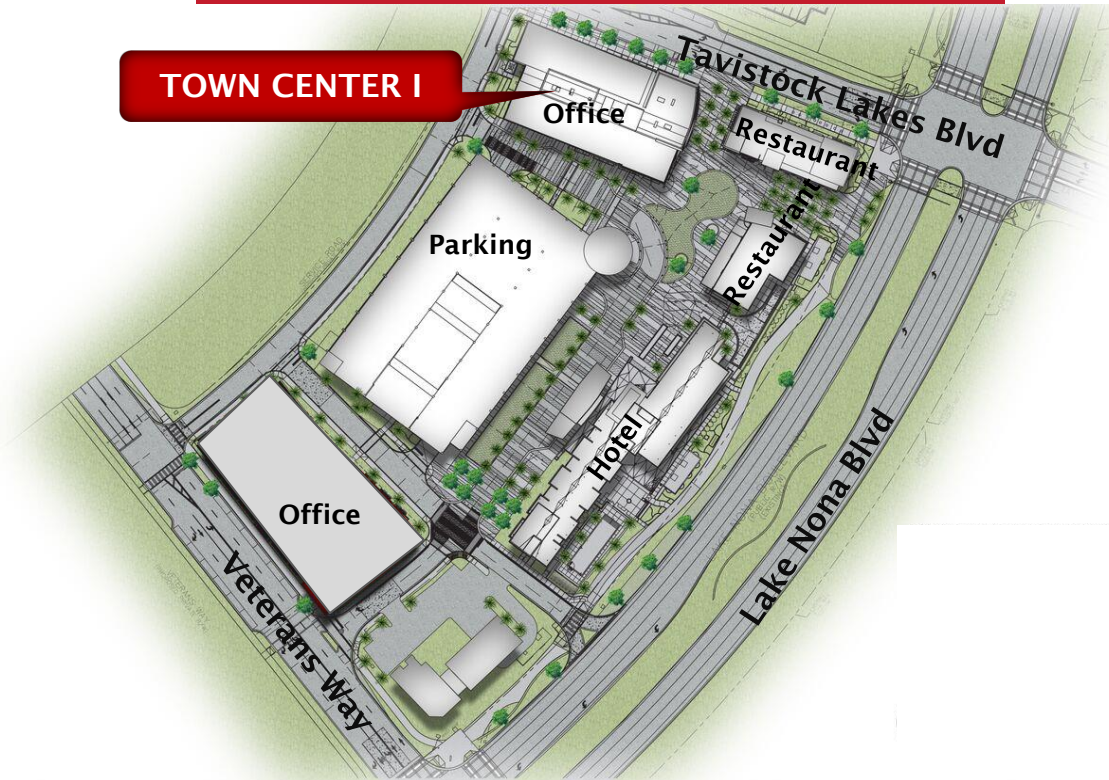
**OFFICE SPACE  
AVAILABLE**

Tavistock Development Company  
6900 Tavistock Lakes Blvd, Suite 200  
Orlando, FL 32827  
TavistockDevelopment.com

For more information, please contact:

**GINGER VETTER**  
direct: 407.816.6686  
cell: 407.619.5245  
gvetter@tavistock.com

# LAKE NONA TOWN CENTER I



## PROJECT FEATURES:

- Class-A space with upgraded finishes throughout
- Beautifully landscaped plaza with outdoor seating, restaurants and entertainment
- Parking in multi-level garage free of charge to tenants
- Adjacent to 204-room, Residence Inn & Courtyard by Marriott
- In walking distance to planned fitness center, restaurants, and retail
- Easy access to SR 417, SR 528, Florida's Turnpike and minutes from Orlando Int'l Airport
- Multiple housing options nearby

## LAKE NONA TOWN CENTER IS CONVENIENTLY LOCATED NEAR

Nemours Children's Hospital  
UCF College of Medicine  
VA Medical Center  
UF Research & Academic Center

GuideWell Innovation Center  
Sanford Burnham Prebys Medical  
Discovery Institute  
USTA's National Campus  
Restaurants

Laureate Park  
Village Walk  
Landon House (Urban-Style Apartments)  
Watermark Apartments



**TAVISTOCK**  
DEVELOPMENT COMPANY

**OFFICE SPACE  
AVAILABLE**

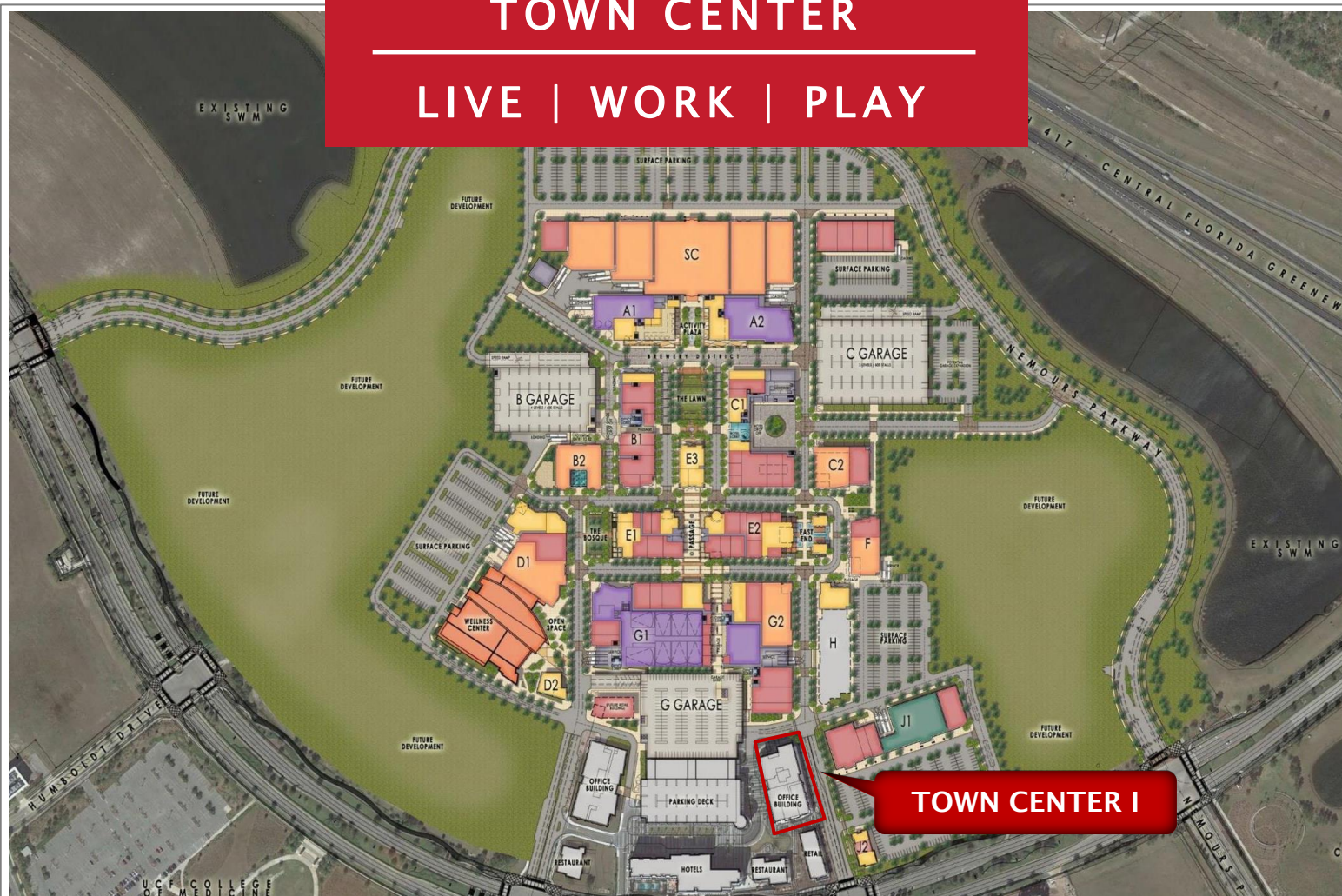
Tavistock Development Company  
6900 Tavistock Lakes Blvd, Suite 200  
Orlando, FL 32827  
TavistockDevelopment.com

For more information, please contact:

**GINGER VETTER**  
direct: 407.816.6686  
cell: 407.619.5245  
gvetter@tavistock.com

# LAKE NONA TOWN CENTER

LIVE | WORK | PLAY



The next phase of Lake Nona Town Center will include an open-air mix of shops, restaurants, entertainment venues, hotels, and office space.

Conceptual Renderings of Lake Nona Town Center



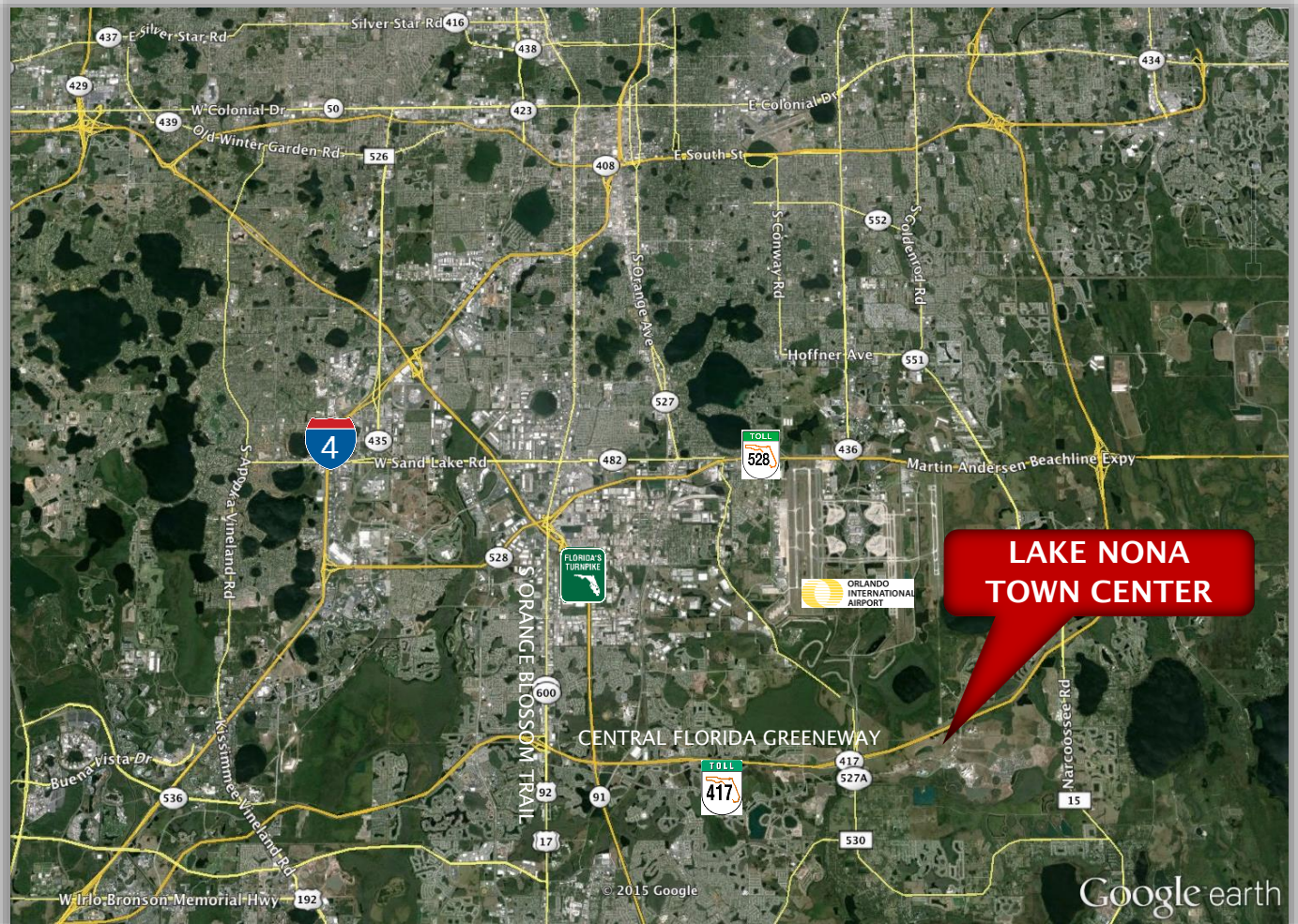
**TAVISTOCK**  
DEVELOPMENT COMPANY

**OFFICE SPACE  
AVAILABLE**

Tavistock Development Company  
6900 Tavistock Lakes Blvd, Suite 200  
Orlando, FL 32827  
TavistockDevelopment.com

For more information, please contact:  
**GINGER VETTER**  
direct: 407.816.6686  
cell: 407.619.5245  
gvetter@tavistock.com

# LAKE NONA TOWN CENTER



## Demographics (0 - 5 miles) 2015

Estimated Population	82,358
Estimated Number of Households	26,457
Estimated Average HH Income	\$72,835
Estimated Median Age	35



**TAVISTOCK**  
DEVELOPMENT COMPANY

Tavistock Development Company  
6900 Tavistock Lakes Blvd, Suite 200  
Orlando, FL 32827  
TavistockDevelopment.com

**OFFICE SPACE  
AVAILABLE**

For more information, please contact:

**GINGER VETTER**  
direct: 407.816.6686  
cell: 407.619.5245  
gvetter@tavistock.com