

Meadows Corporate Campus

6445 Shiloh Rd, Alpharetta, GA 30005

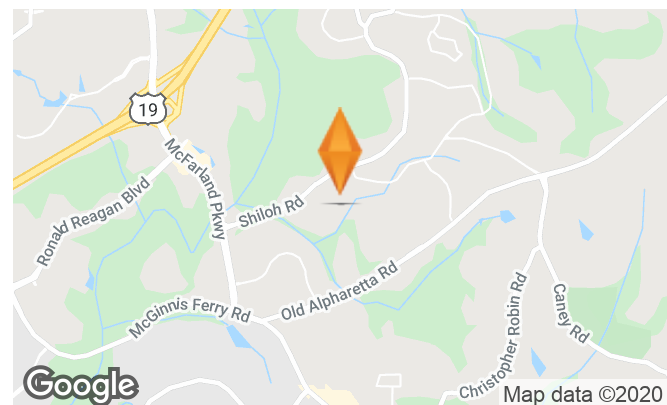
FOR LEASE



5,152-17,930 SF AVAILABLE

PROPERTY HIGHLIGHTS

- Strategically located off McFarland Road with immediate access to GA 400, McGinnis Ferry Road, and Windward Pkwy.
- Close proximity to Halcyon, Avalon, and The Forum, and an abundance of restaurants, hotels, and banking nearby.
- Well-located in Alpharetta, one of Atlanta's most desirable and safest suburbs, just north of the city's perimeter.



For More Information, Contact

JASON GINGOLD | 404.812.8919 | jgingold@skylineseven.com

800 MT. VERNON HIGHWAY NE | SUITE #425 | 404.812.8919 | SKYLINESEVEN.COM

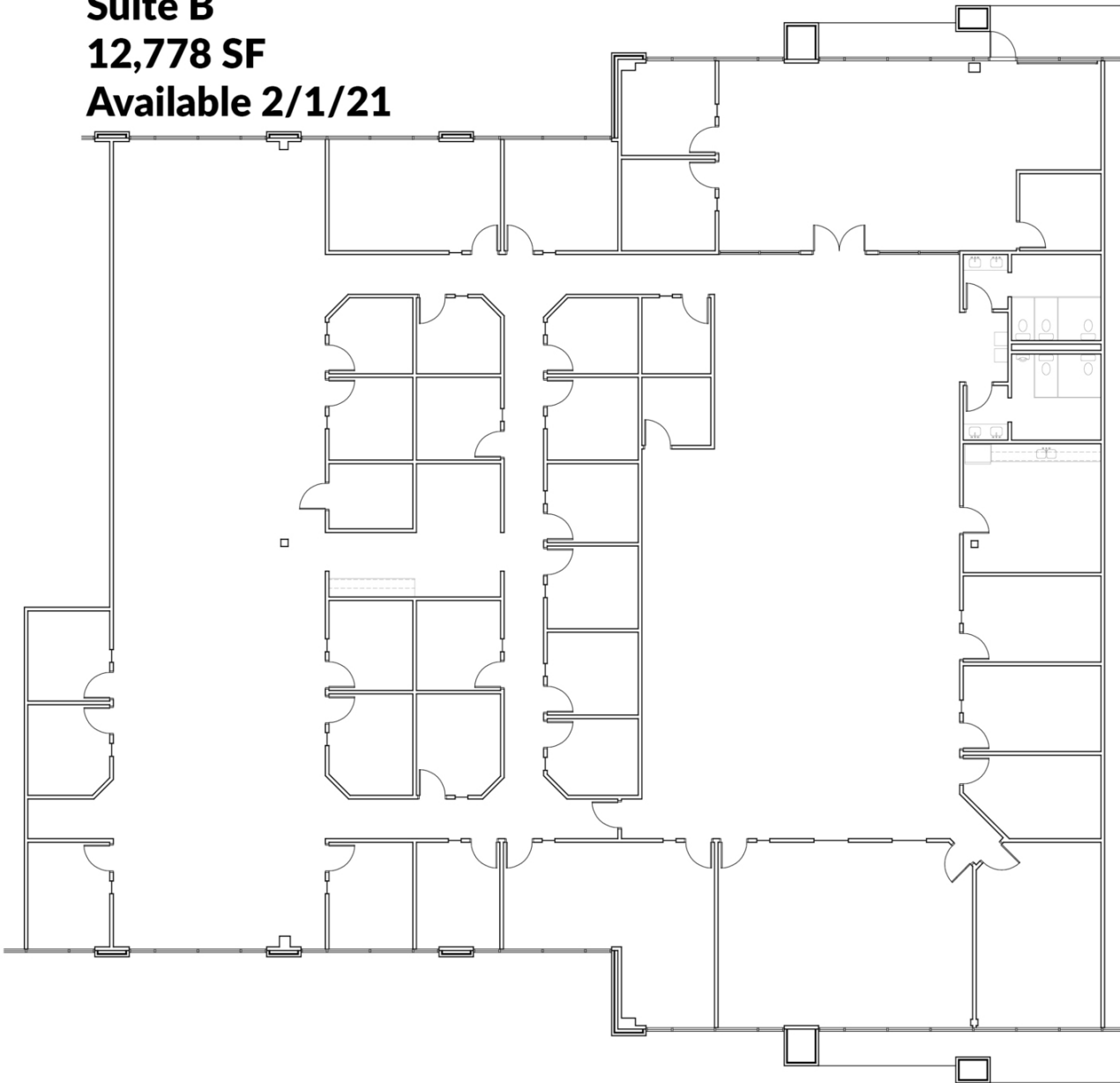

SKYLINE SEVEN
REAL ESTATE

Meadows Corporate Campus

6445 Shiloh Rd, Alpharetta, GA 30005

FOR LEASE

Suite B
12,778 SF
Available 2/1/21



For More Information, Contact

JASON GINGOLD | 404.812.8919 | jgingold@skylineseven.com

800 MT. VERNON HIGHWAY NE | SUITE #425 | 404.812.8919 | SKYLINESEVEN.COM

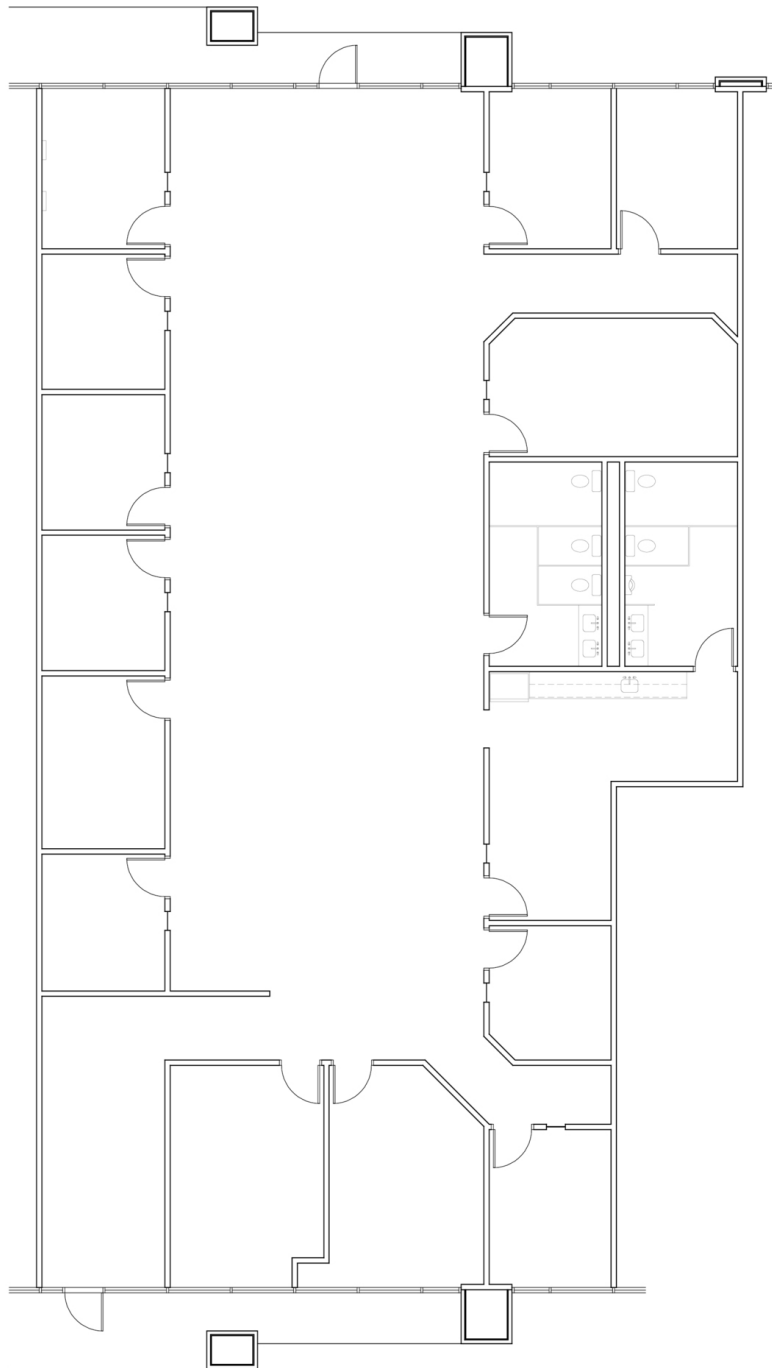

SKYLINE SEVEN
REAL ESTATE

Meadows Corporate Campus

6445 Shiloh Rd, Alpharetta, GA 30005

FOR LEASE

Suite D
5,152 SF



For More Information, Contact

JASON GINGOLD | 404.812.8919 | jgingold@skylineseven.com

800 MT. VERNON HIGHWAY NE | SUITE #425 | 404.812.8919 | SKYLINESEVEN.COM

