



### Property Features

- Lot available with 1.092 AC
- Private industrial park
- Just outside of Town of Bedford off Route 221 N
- Zoned I-2
- Public Water
- Offered at \$69,900



For more information, contact:

**Kristy Milton**  
Associate  
434 239 4058  
[kristy.milton@thalhimer.com](mailto:kristy.milton@thalhimer.com)

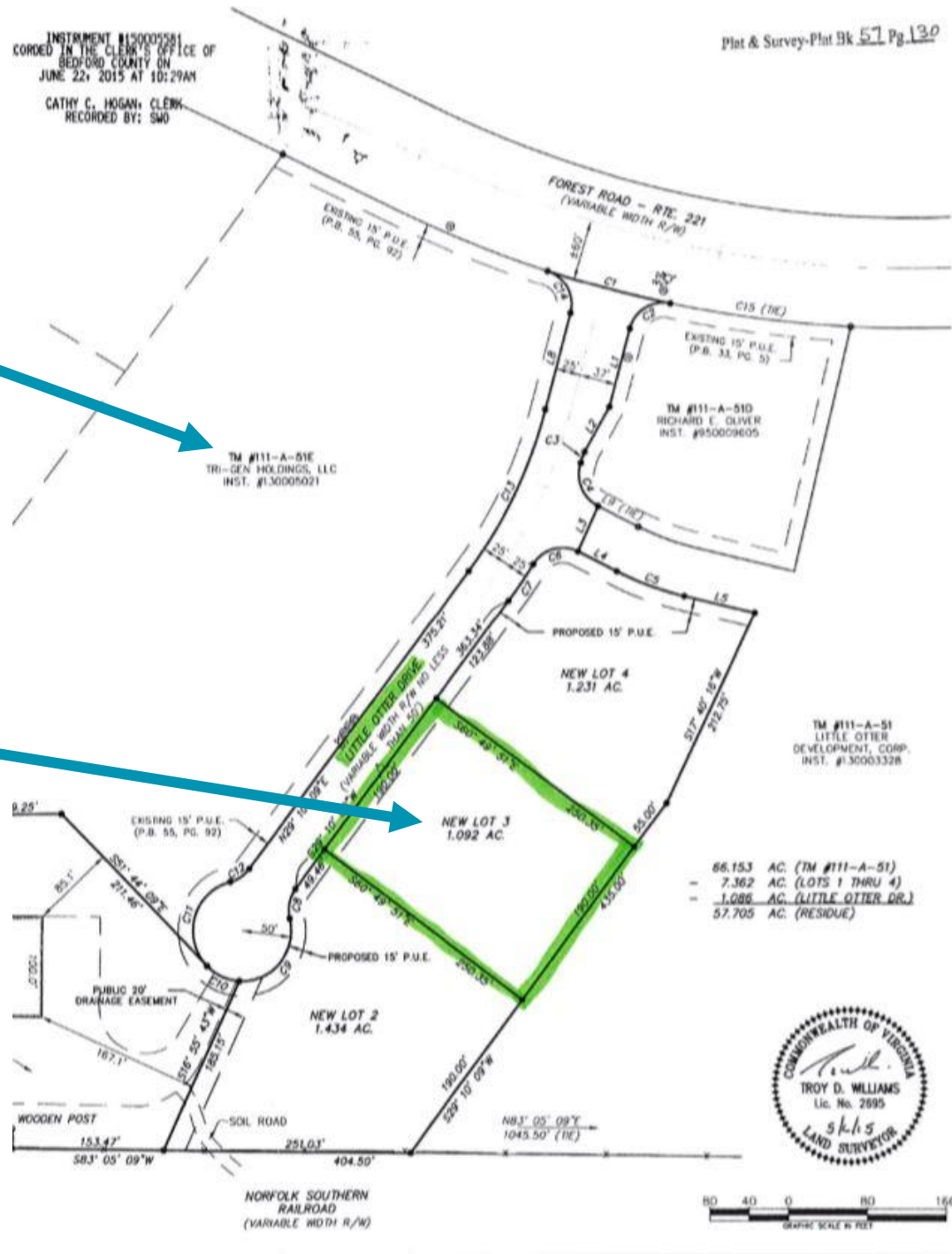
Coffee Crossing  
6000 Boonsboro Road, Suite A  
Lynchburg, VA 24503  
[www.thalhimer.com](http://www.thalhimer.com)

**INDUSTRIAL LAND FOR SALE**  
**LOT 3 LITTLE OTTER DR**

Bedford, VA 24523

Plat & Survey-Plat Bk 57 Pg. 130

INSTRUMENT #15000581  
 CORDING IN THE CLERK'S OFFICE OF  
 BEDFORD COUNTY ON  
 JUNE 22, 2015 AT 10:29AM  
 CATHY C. HOGAN, CLERK  
 RECORDED BY: SMO



For more information, contact:

**Kristy Milton**  
 Associate  
 434 239 4058  
[kristy.milton@thalhimer.com](mailto:kristy.milton@thalhimer.com)

Coffee Crossing  
 6000 Boonsboro Road, Suite A  
 Lynchburg, VA 24503  
[www.thalhimer.com](http://www.thalhimer.com)

Independently Owned and Operated / A Member of the Cushman & Wakefield Alliance

Cushman & Wakefield | Thalhimer © 2015. No warranty or representation, express or implied, is made to the accuracy or completeness of the information contained herein, and same is submitted subject to errors, omissions, change of price, rental or other conditions, withdrawal without notice, and to any special listing conditions imposed by the property owner(s). As applicable, we make no representation as to the condition of the property (or properties) in question.