

22 N. WASHINGTON STREET
OXFORD, MICHIGAN

RETAIL FOR SALE
5,884 Square Feet Available



**SIGNATURE
ASSOCIATES**
KNOW SIGNATURE | KNOW RESULTS

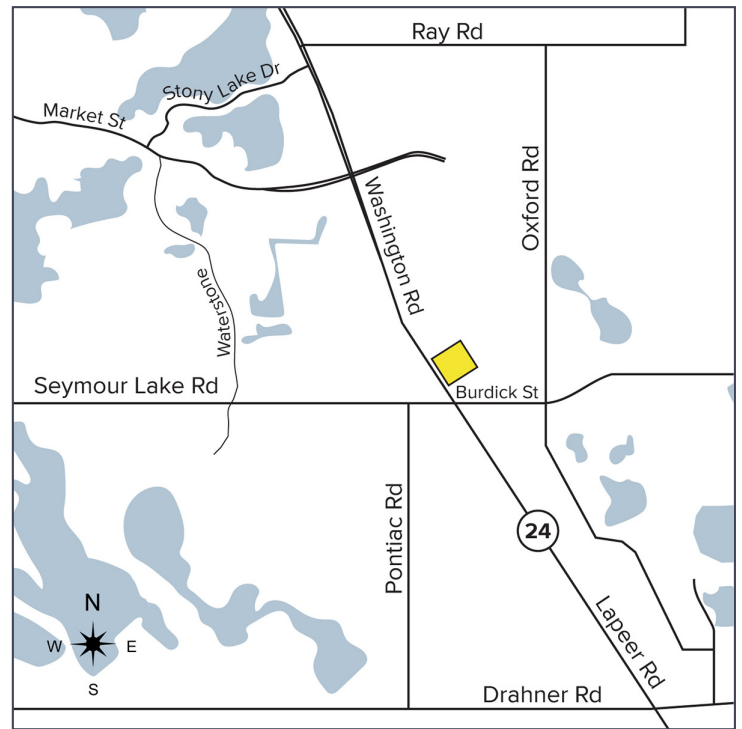
HISTORIC LOCATION!



PROPERTY FEATURES

- 5,884 available square feet
- Zoned C-1
- 0.49 acres
- 10 dedicated spaces and ample free city parking
- Sale Price: \$799,000 (\$135.79/sq.ft.)

Comments: Own a piece of Oxford history! Originally a Packard car showroom, this building is the center of Downtown Oxford and zoned Central Business District for many possible uses. First time on the market!



For more information, please contact:

PETER VANDERKAAY
(248) 359 3837
pvanerkaay@signatureassociates.com

JEFF TREPECK
(248) 359 0626
jtrepeck@signatureassociates.com

SIGNATURE ASSOCIATES
One Towne Square, Suite 1200
Southfield, MI 48076
www.signatureassociates.com

22 N. Washington Street – Oxford, Michigan

Retail For Sale

5,884
Square Feet
AVAILABLE

Interior Photos



For more information, please contact:

PETER VANDERKAAY
(248) 359 3837
pvanerkaay@signatureassociates.com

JEFF TREPECK
(248) 359 0626
jtrepeck@signatureassociates.com

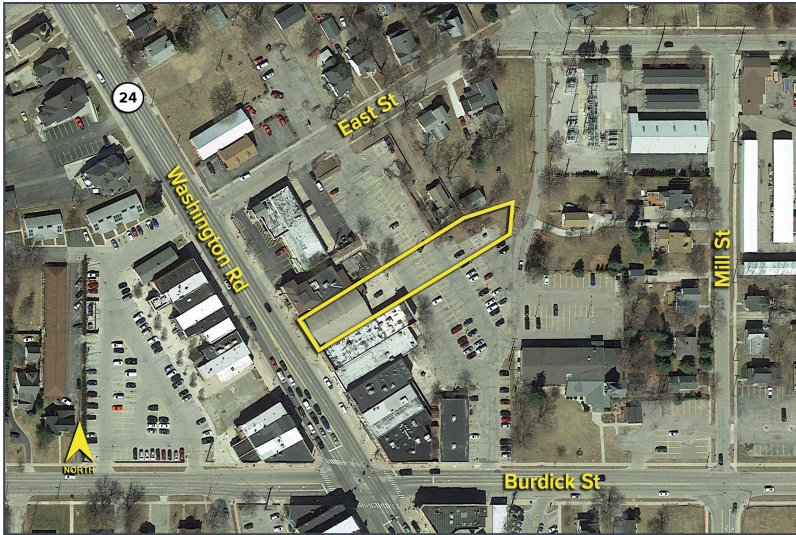
SIGNATURE ASSOCIATES
One Towne Square, Suite 1200
Southfield, MI 48076
www.signatureassociates.com

Information is subject to verification and no liability for errors or omissions is assumed. Price is subject to change and listing withdrawal.

22 N. Washington Street – Oxford, Michigan

Retail For Sale

5,884
Square Feet
AVAILABLE



DEMOGRAPHICS

	POPULATION	MED. HH INCOME
1 MILE	6,595	\$75,066
3 MILE	24,293	\$88,361
5 MILE	46,966	\$92,266

TRAFFIC COUNTS (TWO-WAY)

30,761	Washington St. N. of Burdick St. 2-Way
31,121	Washington St/ S. of Burdick St. 2-Way
9,857	Burdick St. E. of Washington St. 2-Way
7,331	Burdick St. W. of Washington St. 2-Way



For more information, please contact:

PETER VANDERKAAY
(248) 359 3837
pvanderkaay@signatureassociates.com

JEFF TREPECK
(248) 359 0626
jtrepeck@signatureassociates.com

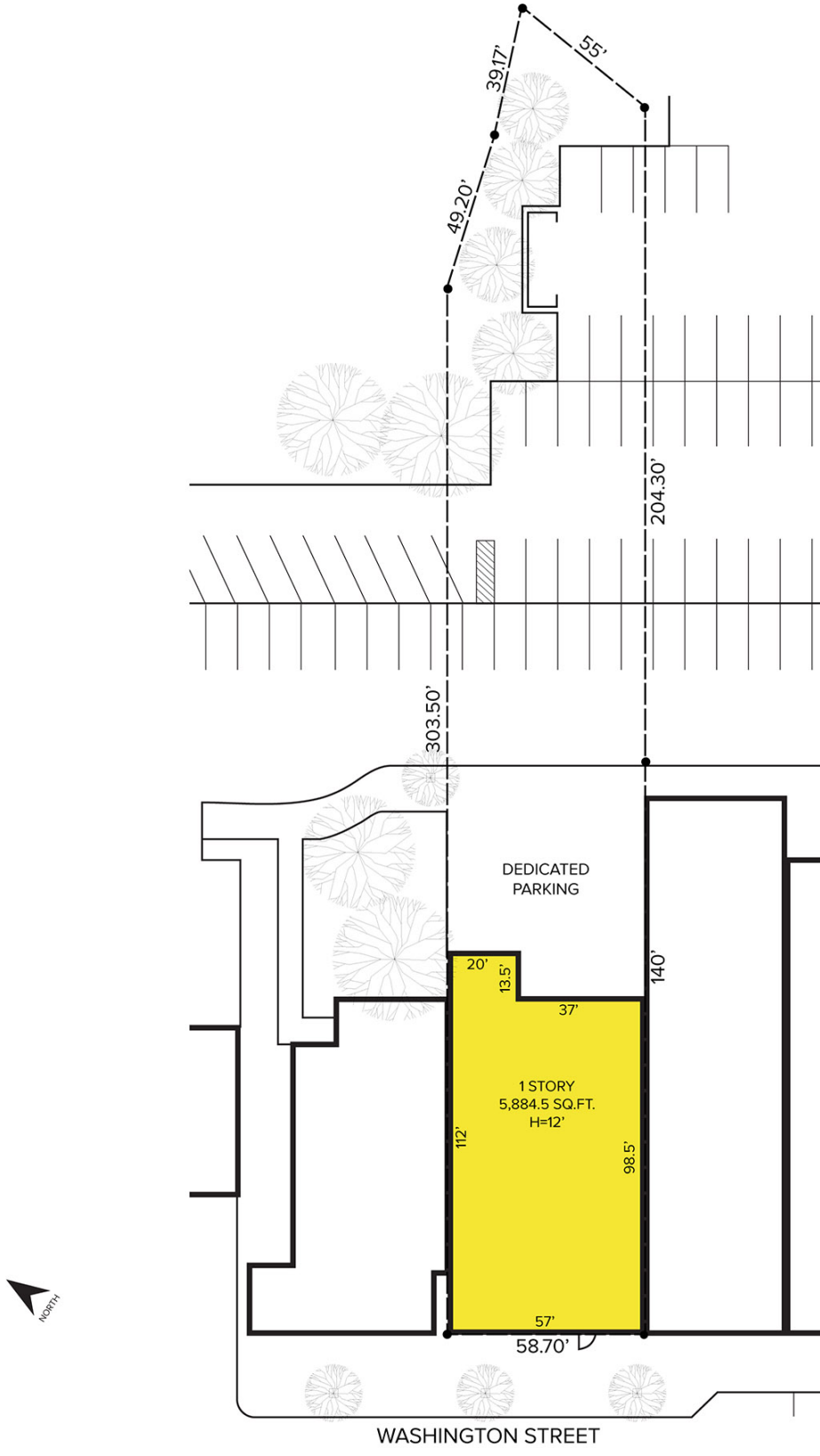
SIGNATURE ASSOCIATES
One Towne Square, Suite 1200
Southfield, MI 48076
www.signatureassociates.com

22 N. Washington Street – Oxford, Michigan

Retail For Sale

5,884
Square Feet
AVAILABLE

Site Plan



For more information, please contact:

PETER VANDERKAAY
(248) 359 3837
pvanerkaay@signatureassociates.com

JEFF TREPECK
(248) 359 0626
jtrepeck@signatureassociates.com

SIGNATURE ASSOCIATES
One Towne Square, Suite 1200
Southfield, MI 48076
www.signatureassociates.com