

LEASE

OFFICE/RETAIL

MEDICAL



BROWNSBURG // PRIME MEDICAL OFFICE LOCATION



LEASE RATE

NEGOTIABLE

AVAILABLE SF

3,300 SF

Join Brownsburg Dental Center and SC Computer Sales & Service in this well-located, highly-visible, and well-maintained commercial building.

- + 3,300 SF with existing medical office buildout includes 8 exam rooms, nurses' station, lab and procedure rooms, staff and public restrooms, staff breakroom, storage, and office space.
- + Zoning C-1
- + Convenient access from I-74 and Ronald Reagan Parkway.
- + Traffic Counts: over 13,000 VPD on E Northfield Dr

AVAILABLE SPACES

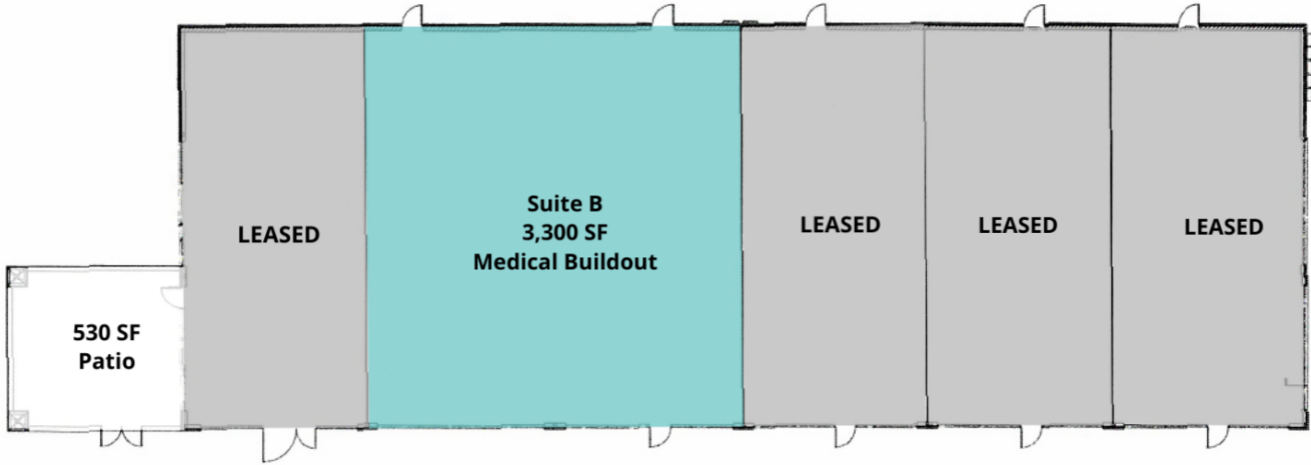
LEASE

OFFICE/RETAIL

475 EAST NORTHFIELD DRIVE

BROWNSBURG, IN 46112

LEASE TYPE | NNN TOTAL SPACE | 3,300 SF LEASE TERM | 60 months LEASE RATE | Negotiable



UNAVAILABLE PATIO AVAILABLE

SUITE	TENANT	SIZE	TYPE	RATE	DESCRIPTION
Suite B	Available	3,300 SF	NNN	Negotiable	Medical Buildout.

in #growIndiana

The information contained herein was obtained from sources we consider reliable. We cannot be responsible for errors, omissions, prior sale or lease, withdrawal from the market or change in price. Seller and broker make no representation as to the environmental condition of the property and recommend the lessee's/purchaser's independent investigation.

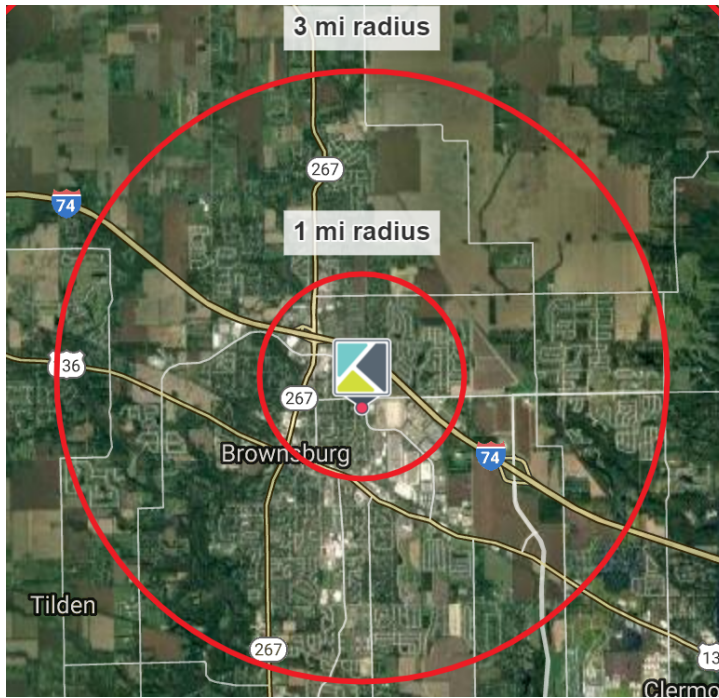
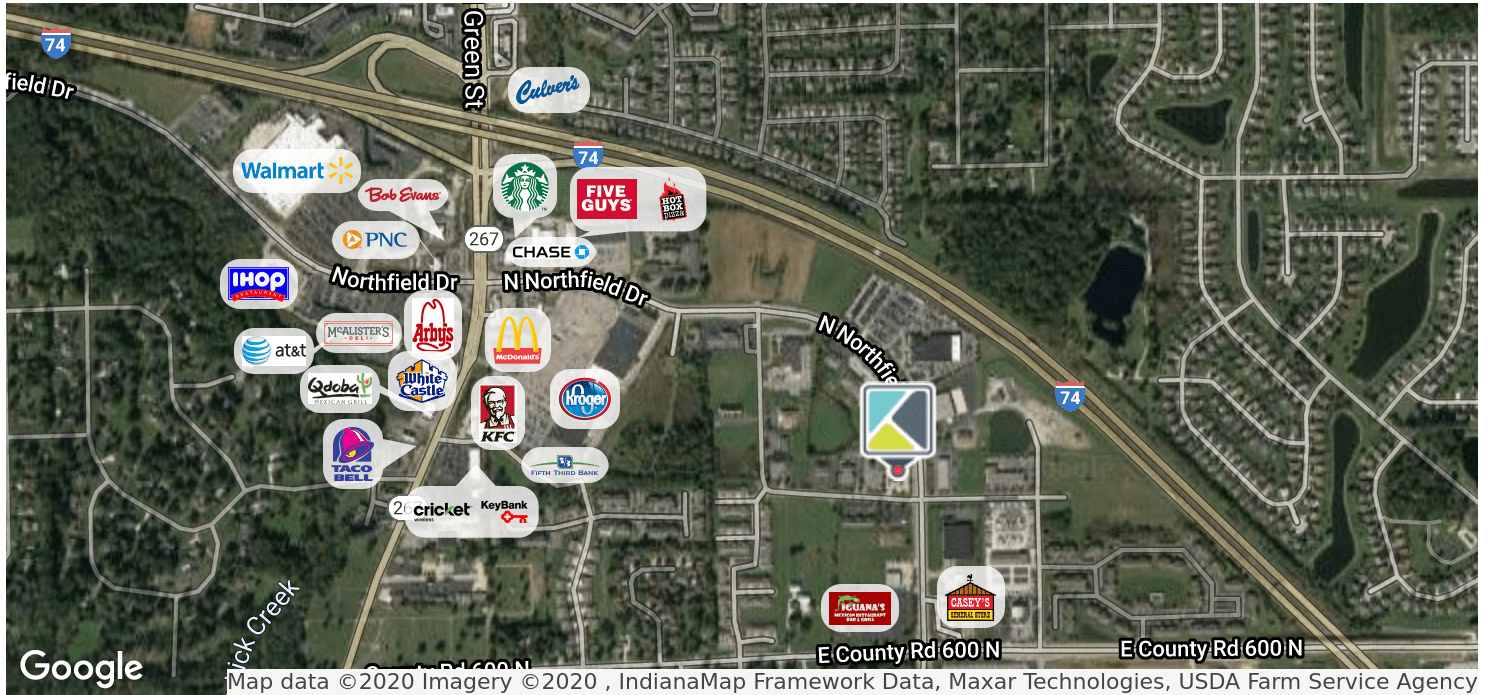
9339 Priority Way West Drive
Suite 120
Indianapolis, IN 46240
317.663.6000

475 EAST NORTHFIELD DRIVE

BROWNSBURG, IN 46112



475 EAST NORTHFIELD DRIVE



POPULATION	1 MILE	3 MILES
Total population	4,011	28,199
Median age	32.9	35.7
HOUSEHOLDS & INCOME	1 MILE	3 MILES
Total households	1,520	10,371
Average HH income	\$73,018	\$79,425

* Demographic data derived from 2019 US Census

PAT O'HARA
 Senior Vice President
 ☎ 317.663.6076
 ☎ 317.796.4733
 pat.ohara@rcre.com



in 🐦 f 📷 🍷 #growIndiana