



# OFFICE SPACE FOR LEASE

## 2401 S PLUM GROVE RD, PALATINE, IL



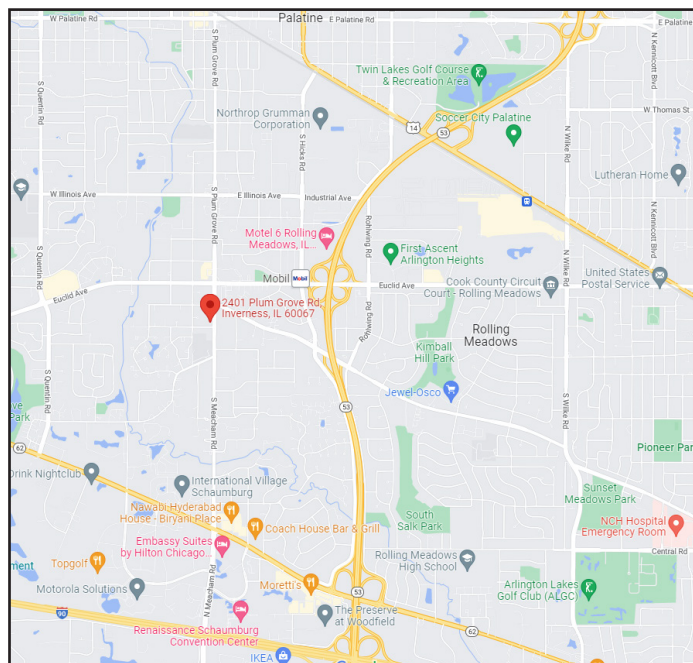
### BUILDING FEATURES:

- 4,000-15,260 SF Available Immediately For Lease
- Attractive Atrium Building w/ Skylights and Elevator
- Easy Access to Route 53/I-90 via Euclid
- Building Signage Available
- New Parking Lot with 4.5 per 1,000 SF
- Home to American Portfolio Mtg & Matrix Systems
- Located 1 Mile North of New Meacham Rd Full Interchange & I-90
- **INTERIOR REFRESH COMPLETED IN 2022!!!!**

### AVAILABLE SPACE:

SUITE	SIZE (SF)	DESCRIPTION
100	4,000-15,260 SF	Former Consumers Credit Union Space **High End Finishes & Furniture Available**

- Comcast High Speed Internet!
- 24-Hour Access & ATM on site
- Tenant Controlled Heating and Air Conditioning!
- Close Proximity to Hotel and Restaurants
- Great Layouts for Immediate Occupancy
- **Rental Rate: \$16.50-\$17.75 PSF MG**



### FOR MORE INFORMATION:

RANDY OLCZYK  
Direct: 847.246.9611

randy@chicagolandcommercial.com

RAY OKIGAWA  
Direct: 847.246.9632

ray@chicagolandcommercial.com

LEASING | SALES | TENANT ADVISORY | MANAGEMENT



**Chicagoland  
Commercial  
REAL ESTATE**

4811 Emerson Ave Suite 112, Palatine, IL

[www.chicagolandcommercial.com](http://www.chicagolandcommercial.com)

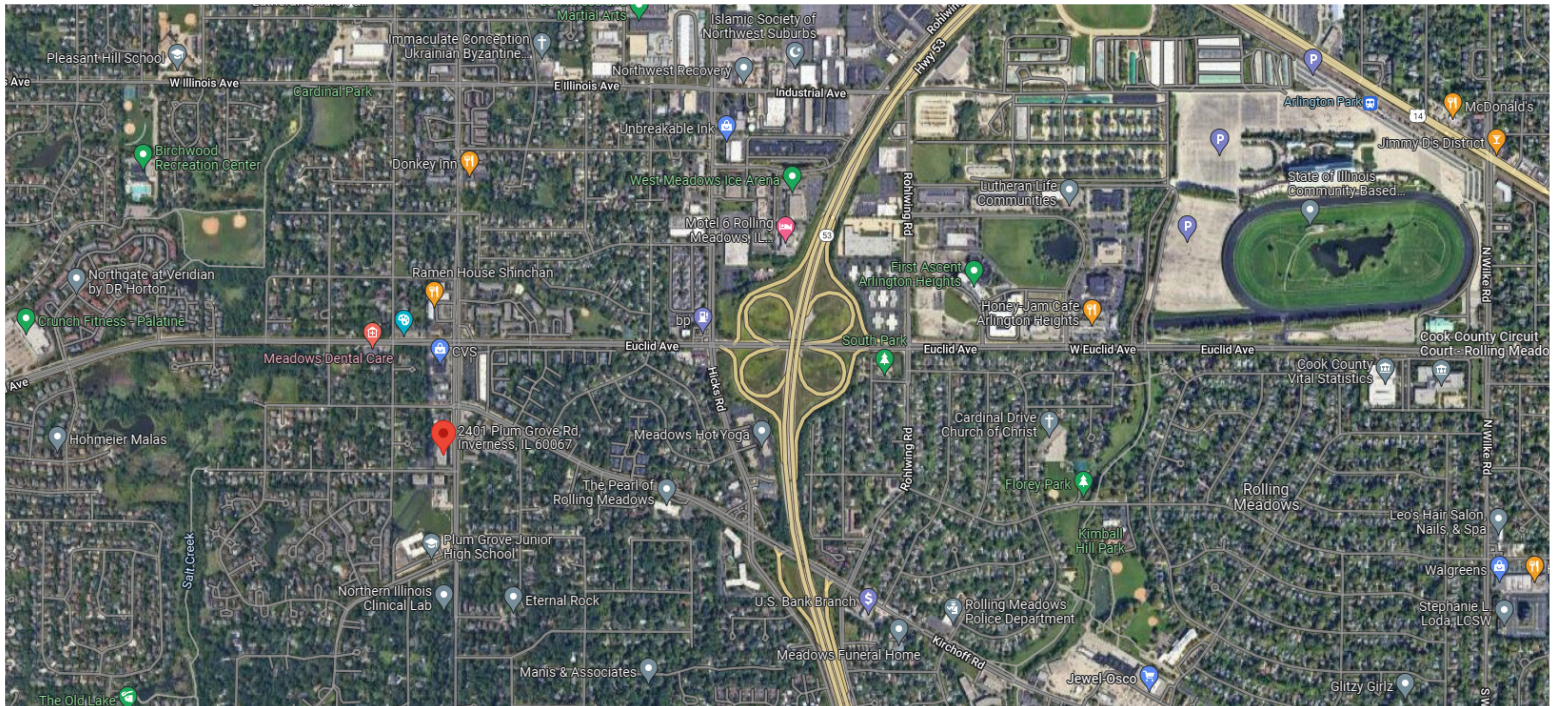
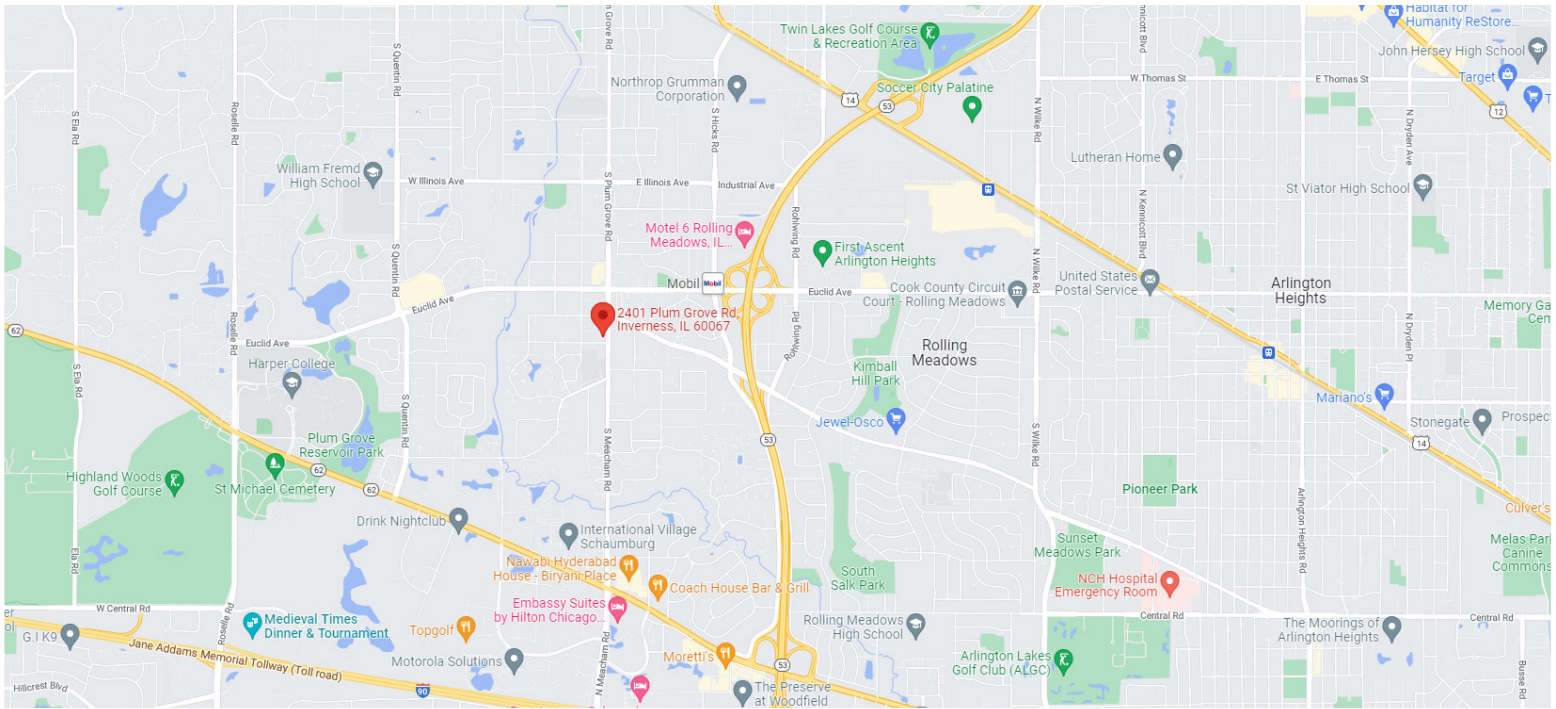




# OFFICE SPACE FOR LEASE

## 2401 S PLUM GROVE RD, PALATINE, IL

### AREA MAPS



### FOR MORE INFORMATION:

RANDY OLCZYK  
Direct: 847.246.9611  
randy@chicagolandcommercial.com

RAY OKIGAWA  
Direct: 847.246.9632  
ray@chicagolandcommercial.com



**Chicagoland  
Commercial**  
REAL ESTATE

4811 Emerson Ave Suite 112, Palatine, IL

LEASING | SALES | TENANT ADVISORY | MANAGEMENT

[www.chicagolandcommercial.com](http://www.chicagolandcommercial.com)





# OFFICE SPACE FOR LEASE

2401 S PLUM GROVE RD, PALATINE, IL

## PROPERTY PHOTOS



## FOR MORE INFORMATION:

RANDY OLCZYK  
Direct: 847.246.9611  
[randy@chicagolandcommercial.com](mailto:randy@chicagolandcommercial.com)

RAY OKIGAWA  
Direct: 847.246.9632  
[ray@chicagolandcommercial.com](mailto:ray@chicagolandcommercial.com)



**Chicagoland  
Commercial  
REAL ESTATE**

4811 Emerson Ave Suite 112, Palatine, IL

[www.chicagolandcommercial.com](http://www.chicagolandcommercial.com)

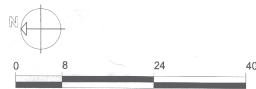
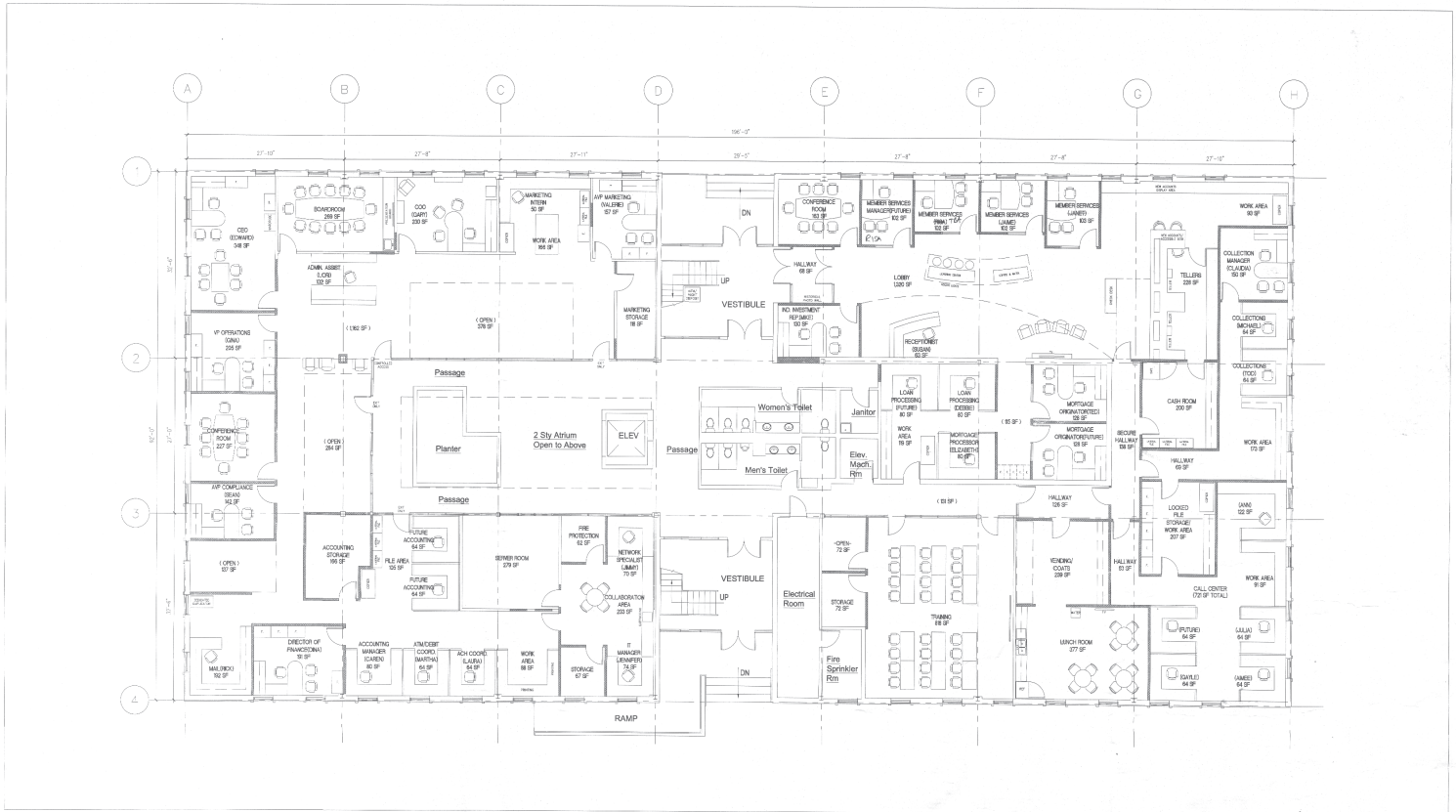
LEASING | SALES | TENANT ADVISORY | MANAGEMENT



# OFFICE SPACE FOR LEASE

## 2401 S PLUM GROVE RD, PALATINE, IL

### FIRST FLOOR PLAN (SUITE 100) 4,000-15,260 SF AVAILABLE



MEADOWS CREDIT UNION  
FIRST FLOOR PLAN (OPTION 4)  
ROLLING MEADOWS, IL 13,380 SF  
SCALE: 1/16" = 1'-0" 03-01-16

OUR BUSINESS IS BUILDING YOURS  
**LaMACCHIA**  
GROUP

**\*\*SPACE CAN EASILY BE DIVIDED FROM 4,000-15,260 SF**

#### FOR MORE INFORMATION:

RANDY OLCZYK  
Direct: 847.246.9611  
randy@chicagolandcommercial.com

RAY OKIGAWA  
Direct: 847.246.9632  
ray@chicagolandcommercial.com



4811 Emerson Ave Suite 112, Palatine, IL

LEASING | SALES | TENANT ADVISORY | MANAGEMENT

[www.chicagolandcommercial.com](http://www.chicagolandcommercial.com)