



thehubatchandler.com

U N L I M I T E D

O P P O R T U N I T Y

W O R K W I T H O U T L I M I T S



Your focus is on your business – on its success, its sustainability and its future. You need a workplace that supports your goals and doesn't stand in the way of your progress. You need an office that enables growth and flexibility without any checks on your ambition. At The HUB, you are free to create, collaborate and innovate without restraint.

U N L I M

WELCOME TO THE HUB.

You are now free to work exactly as you choose.

Free from:



FLOOR PLATE CONSTRAINTS

±295,000 SF Building with up to ±163,000 SF floors and 19' ceilings



RESTRICTIONS ON SUCCESS

±76-acre campus with space to grow additional land for Build-to suites is available



DENSITY LIMITATIONS

6/1000 parking ratio is available with growth to 8/1000 onsite



ITIED



B R E A K O U T O F
C O N V E N T I O N A L
W O R K S P A C E



The HUB is carefully calibrated to meet and exceed the needs of today's businesses. Find spaces and features designed to inspire and motivate at every turn.

- ±19' ceilings and floor-to-ceiling glass flood workspaces with natural light
- A completely reimagined lobby unites modern, nature-inspired finishes with in-demand collaboration and lounge areas
- All-new rooftop patio delivers a fresh air spot for breaks, events and a new perspective
- State-of-the-art training facility ready today



FLOOR PLANS

DESIGNED WITH
EFFICIENCY
IN MIND

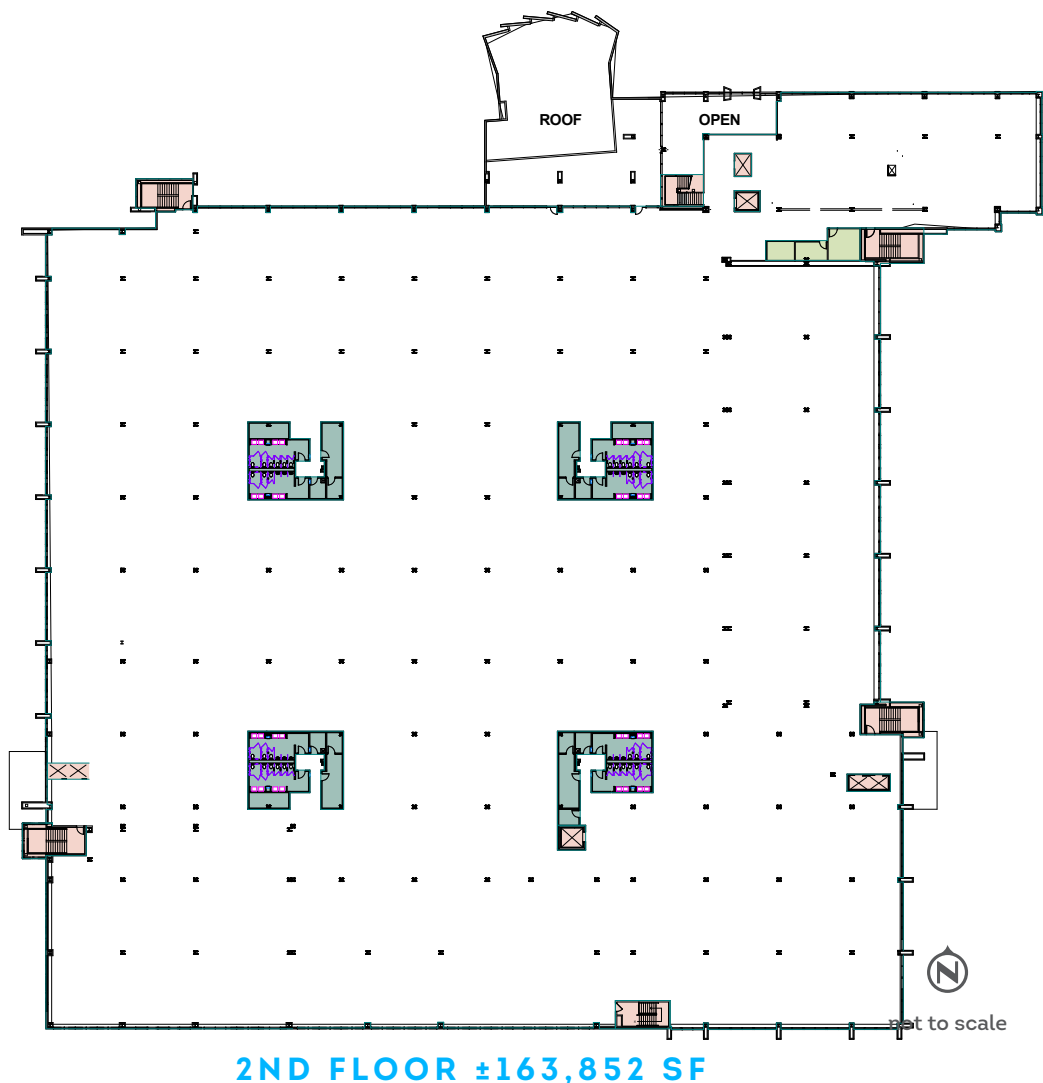


1ST FLOOR ±131,588 SF

The Hub delivers plenty of space for your business to expand as your business grows - both in the current building, and across our ±76-acre campus. Need more parking, specialized space or just more room to work? You'll find flexible options all for it right here.



- Up to ±160,300 SF floor plates
- Full or partial building opportunity
- Creative mezzanine 2nd floor space
- Upgraded mechanical and electrical system support the latest technology
- Full-service cafeteria
- State of the art training facility
- 6/1,000 parking ratio, expandable to +8/1,000



AMENITIES



G E T

U N R E S T R I C T E D

C O N V E N I E N C E



At The HUB, you'll enjoy freedom from traffic headaches and commute frustrations. Be on Loop 202 or at any one of dozens of shopping and dining destinations in minutes. And, when you're heading out of town Phoenix Sky Harbor International Airport is only 25 minutes away.



J O I N A C O M M U N I T Y O F I N N O V A T I O N

Chandler Arizona is a proven destination for companies looking to recruit and retain the best talent and deliver a comfortable, affordable lifestyle for employees. Combine that with the customizable spaces and unmatched conveniences at The HUB to create your ideal workday, every day.

#1 CITY IN AZ FOR
MILLENNIAL
JOB SEEKERS

- NerdWallet, 2015

1 OF THE 10 BEST
CITIES FOR
FAMILIES

- Livability.com/RealtorMag, 2015

15th HARDEST WORKING CITY IN AMERICA

- WalletHub, 2016

6th BEST CITY TO
FIND A JOB

- NerdWallet, 2015

1 OF THE 10 SAFEST
CITIES IN AMERICA

- LawStreetMedia, 2015 (for cities with a population of more than 200,000)

LEADERS, CREATORS, INVENTORS... AND YOU

At The HUB, you'll be in the company of industry-leading businesses:



Infusionsoft



D I S C O V E R
U N L I M I T E D
O P P O R T U N I T Y
A T T H E H U B.

N O W L E A S I N G.

FOR DETAILS, PLEASE CONTACT:

COREY HAWLEY

+1 602 735 1742

corey.hawley@cbre.com

JIMMY CORNISH

+1 602 735 1741

jimmy.cornish@cbre.com

SEAN SPELLMAN

+1 602 735 5615

sean.spellman@cbre.com



thehubatchandler.com

The HUB, 2701 E Ryan Rd., Chandler, AZ 85286

© 2019 CBRE, Inc. All rights reserved. This information has been obtained from sources believed reliable, but has not been verified for accuracy or completeness. You should conduct a careful, independent investigation of the property and verify all information. Any reliance on this information is solely at your own risk. CBRE and the CBRE logo are service marks of CBRE, Inc. All other marks displayed on this document are the property of their respective owners. Photos herein are the property of their respective owners and use of these images without the express written consent of the owner is prohibited.

CBRE



**CLARIUS
PARTNERS**