

MIXED-USE

RETAIL

SALON SPACE

OFFICE

## PROPERTY INFORMATION

Zoned CB-55 this property is located just east of Washington St on Indiana. The property offers good visibility and convenient location.

## AVAILABLE SPACES

SPACE	LEASE RATE	SIZE (SF)
Suite A	\$16.00 SF/yr	1,871 SF

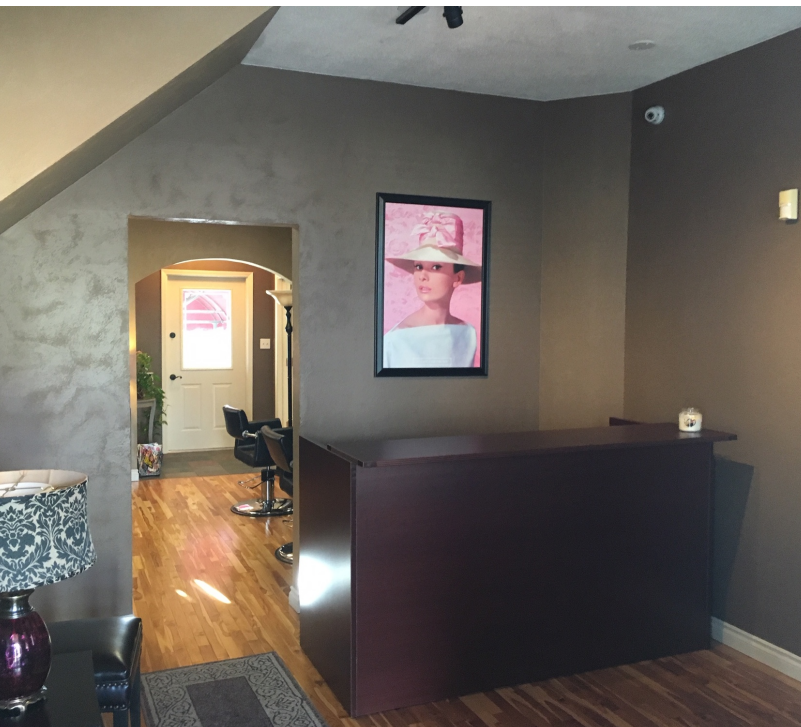
## PROPERTY FEATURES

- 2 Story With Great Basement Storage
- Basement Storage: 1,129 SF
- Off-Street Parking
- Currently setup as a Salon use as it was a law office previously.
- Close proximity to Downtown, Gonzaga, and the Courthouse

Goodale & Barbieri Company  
818 West Riverside #300  
Spokane, WA 99201  
www.g-b.com

Ryan Oberg | Commercial Leasing & Sales Broker  
509.344.4909 // roberg@g-b.com

1



Warranty: Goodale & Barbieri Company does not guarantee, warrant, either expressed or implied, any information supplied by the Seller. Buyer should rely on his own verification of this information as a part of their own due diligence. Copyright: We respect the intellectual property of others. If you believe that your work has been copied in a way that constitutes copyright infringement please contact us immediately.



Map data © 2019 Google Imagery © 2019 , DigitalGlobe, U.S. Geological Survey, USDA Farm Service Agency

Warranty: Goodale & Barbieri Company does not guarantee, warrant, either expressed or implied, any information supplied by the Seller. Buyer should rely on his own verification of this information as a part of their own due diligence. Copyright: We respect the intellectual property of others. If you believe that your work has been copied in a way that constitutes copyright infringement please contact us immediately.

**Goodale & Barbieri Company**  
818 West Riverside #300  
Spokane, WA 99201  
www.g-b.com

**Ryan Oberg** | Commercial Leasing & Sales Broker  
509.344.4909 // roberg@g-b.com

**Clayton McFarland** | Property Manager  
509-344-4929 // cmcfarland@g-b.com