

I-90 and SR 528 (River Street)

Interstate Land For Sale - 2.168± Acres

Madison, Ohio 44057 (Lake County)

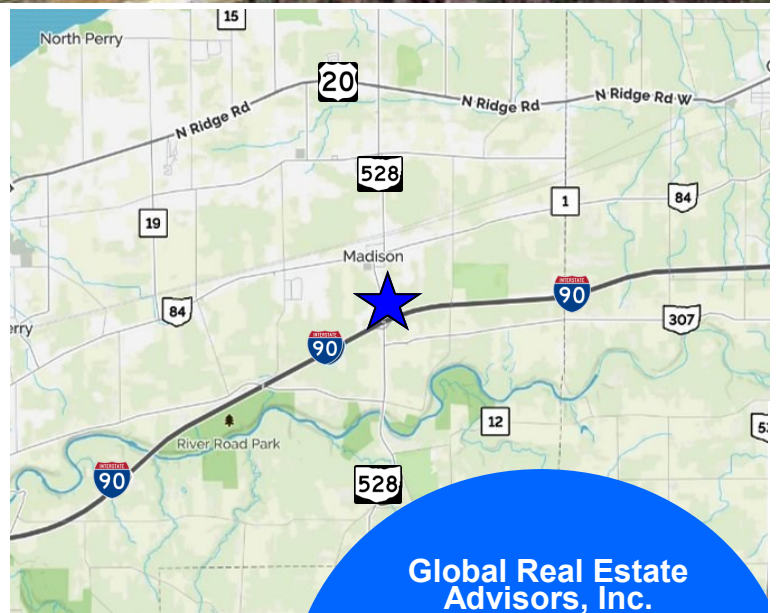
SALE PRICE
\$350,000



Lat Long (41.761213, -81.045920)
GPS Coordinates 41° 45' 40.3668" N 81° 2' 45.3120" W

Property Features:

- 2.168± Acres Zoned Highway Business
- Great Site for Fast Food, Hotel, Retail, Gas or Office
- All Utilities Available
- 244'52"± Frontage on SR 528 (River Street)
- 333' ± Frontage on I-90 & Off Ramp
- Access Easement into Sidley Business Park
- Situated less than 40 Miles from Cleveland, Midway Between Chicago & New York Along I-90
- Great Access to SR 44, SR 534, SR 45 & SR 11
- Great Central Point to Northeast Connecting to the South
- Situated Only One Exit from Spire Academy, the \$100 Million Dollar Sports Facility
- Adjacent to McDonald's & Across from Water Tower Drive that Includes: Lakeland Community College, Lake-Tran and a Daycare
- Highly Visible Site
- Economic Incentives Available



Global Real Estate Advisors, Inc.

Neil Sawicki, SIOR, Broker

440.255.5552 x 221

Neil@GlobalCommercialRE.com

440.339.8585 Cell

www.GlobalCommercialRE.com

8585 East Ave., Mentor, Ohio 44060

Real Estate Advisors Inc.
BROKER

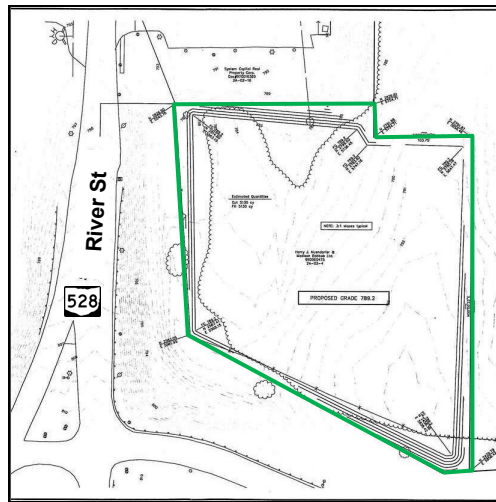
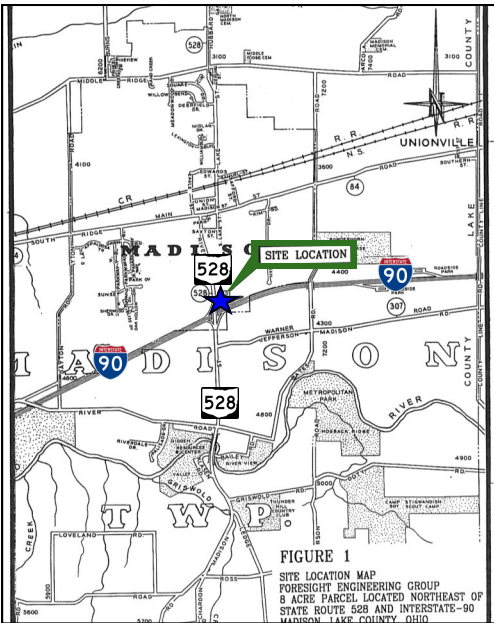


This information has been secured from sources we believe are reliable, but we make no representations or warranties, expressed or implied, as to the accuracy of the information. References to condition, square footage or age are approximate. Buyer or Tenant acknowledges that they are relying on their own investigations and are not relying on Broker provided information. Procuring broker shall only be entitled to a commission, calculated in accordance with the rates approved by our principal only if such procuring broker executes a brokerage agreement acceptable to us and our principal and the conditions as set forth in the brokerage agreement are fully and unconditionally satisfied. Although all information furnished regarding property for sale, rental, or financing is from sources deemed reliable, such information has not been verified and no express representation is made nor is any to be implied as to the accuracy thereof and it is submitted subject to errors, omissions, change of price, rental or other conditions, prior sale, lease or financing, or withdrawal without notice and to any special conditions imposed by our principal.

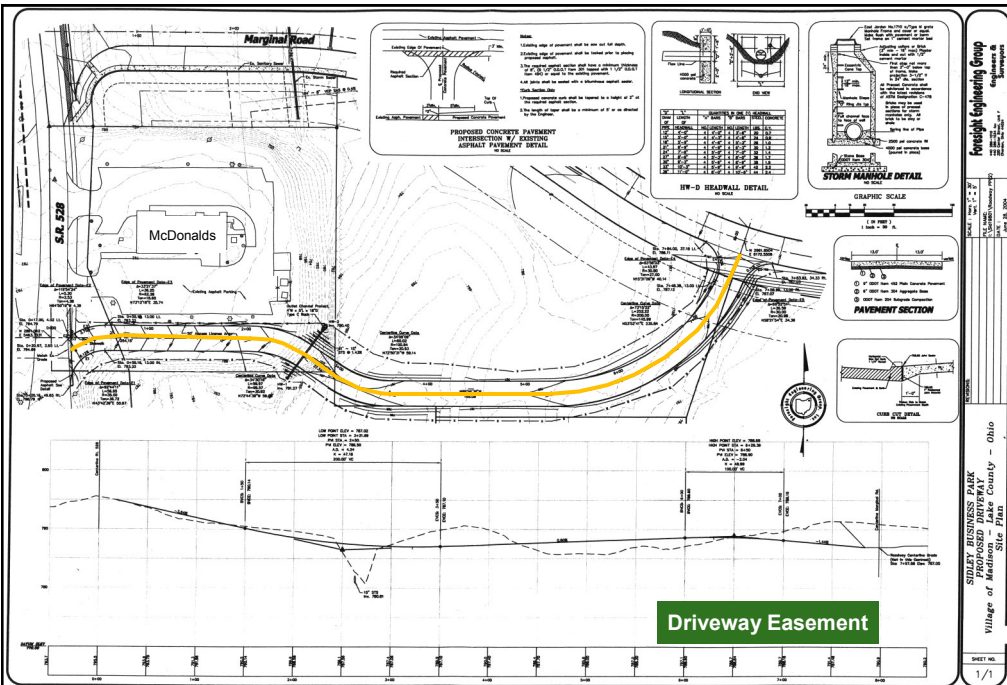
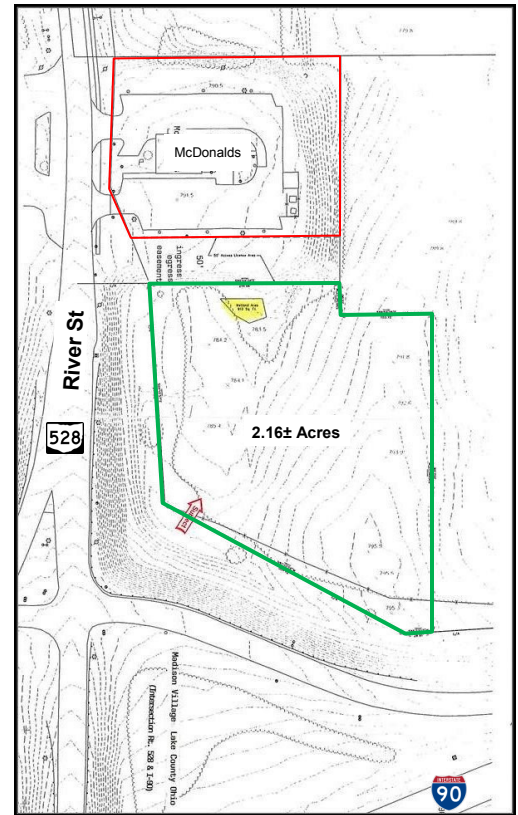
I-90 and SR 528 (River Street)

Interstate Land For Sale - 2.168± Acres

Madison, Ohio 44057 (Lake County)



*Parcel Lines are Approximate



www.GlobalCommercialRE.com
8585 East Ave., Mentor, Ohio 44060

Real Estate Advisors Inc.
BROKER

Global Real Estate
Advisors, Inc.

Neil Sawicki, SIOR, Broker
440.255.5552 x 221
Neil@GlobalCommercialRE.com
440.339.8585 Cell

This information has been secured from sources we believe are reliable, but we make no representations or warranties, expressed or implied, as to the accuracy of the information. References to condition, square footage or age are approximate. Buyer or Tenant acknowledges that they are relying on their own investigations and are not relying on Broker provided information. Procuring broker shall only be entitled to a commission, calculated in accordance with the rates approved by our principal only if such procuring broker executes a brokerage agreement acceptable to us and our principal and the conditions as set forth in the brokerage agreement are fully and unconditionally satisfied. Although all information furnished regarding property for sale, rental, or financing is from sources deemed reliable, such information has not been verified and no express representation is made nor is any to be implied as to the accuracy thereof and it is submitted subject to errors, omissions, change of price, rental or other conditions, prior sale, lease or financing, or withdrawal without notice and to any special conditions imposed by our principal.