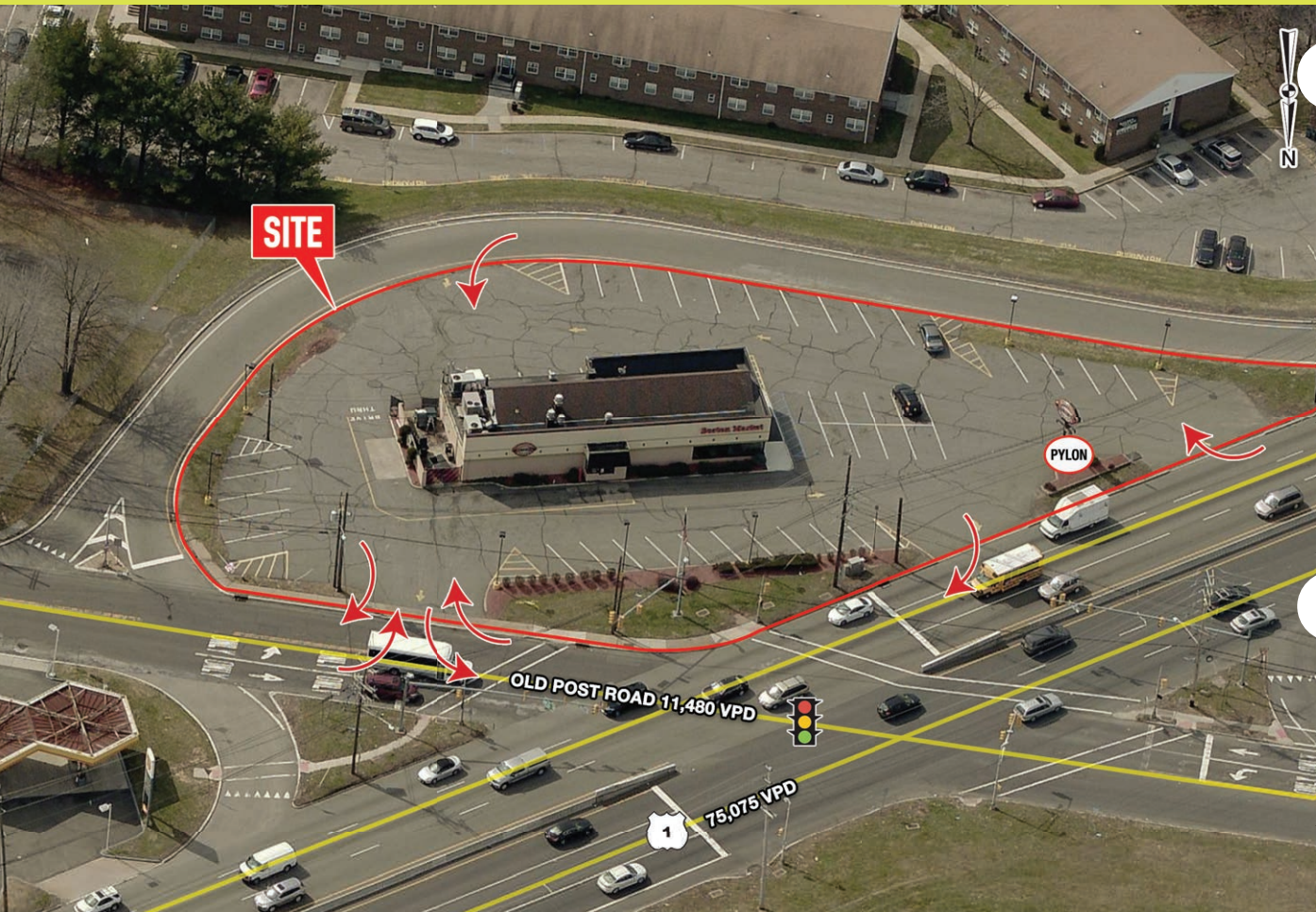


878 US ROUTE 1 NORTH

EDISON, NJ

±3,200 SF WITH DRIVE-THRU ON ±0.79 ACRES AVAILABLE FOR LEASE



property highlights.

- Existing building with drive-thru or ground lease opportunity
- Extremely prominent site with great presence from the road
- Rare full access site along Route 1
- Situated across from Edison Towne Square with Top Golf, iFLY, Starbucks and Chick-fil-a
- Over 75,075 cars per day



stats.

2018 DEMOGRAPHICS*	1 MILE	3 MILES	5 MILES
EST. POPULATION	14,717	90,554	294,253
EST. HOUSEHOLDS	5,449	32,622	96,524
EST. AVG. HH INCOME	\$103,359	\$120,214	\$110,990

TRAFFIC COUNT: US-1 75,075 VPD *ESRI 2018



METRO[®]
COMMERCIAL
REAL ESTATE, INC.

MetroCommercial.com | PHILADELPHIA, PA | PLYMOUTH MEETING, PA | MOUNT LAUREL, NJ | NAPLES, FL

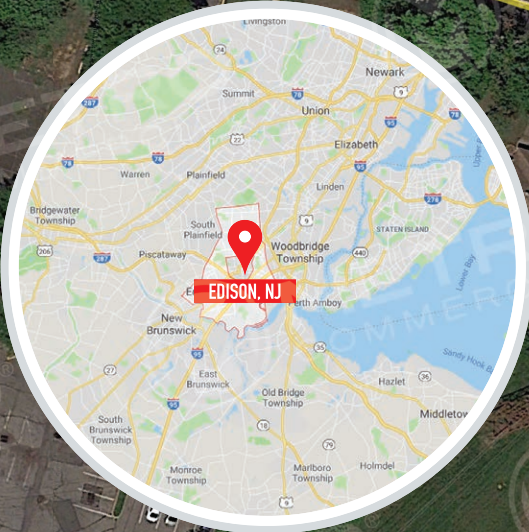
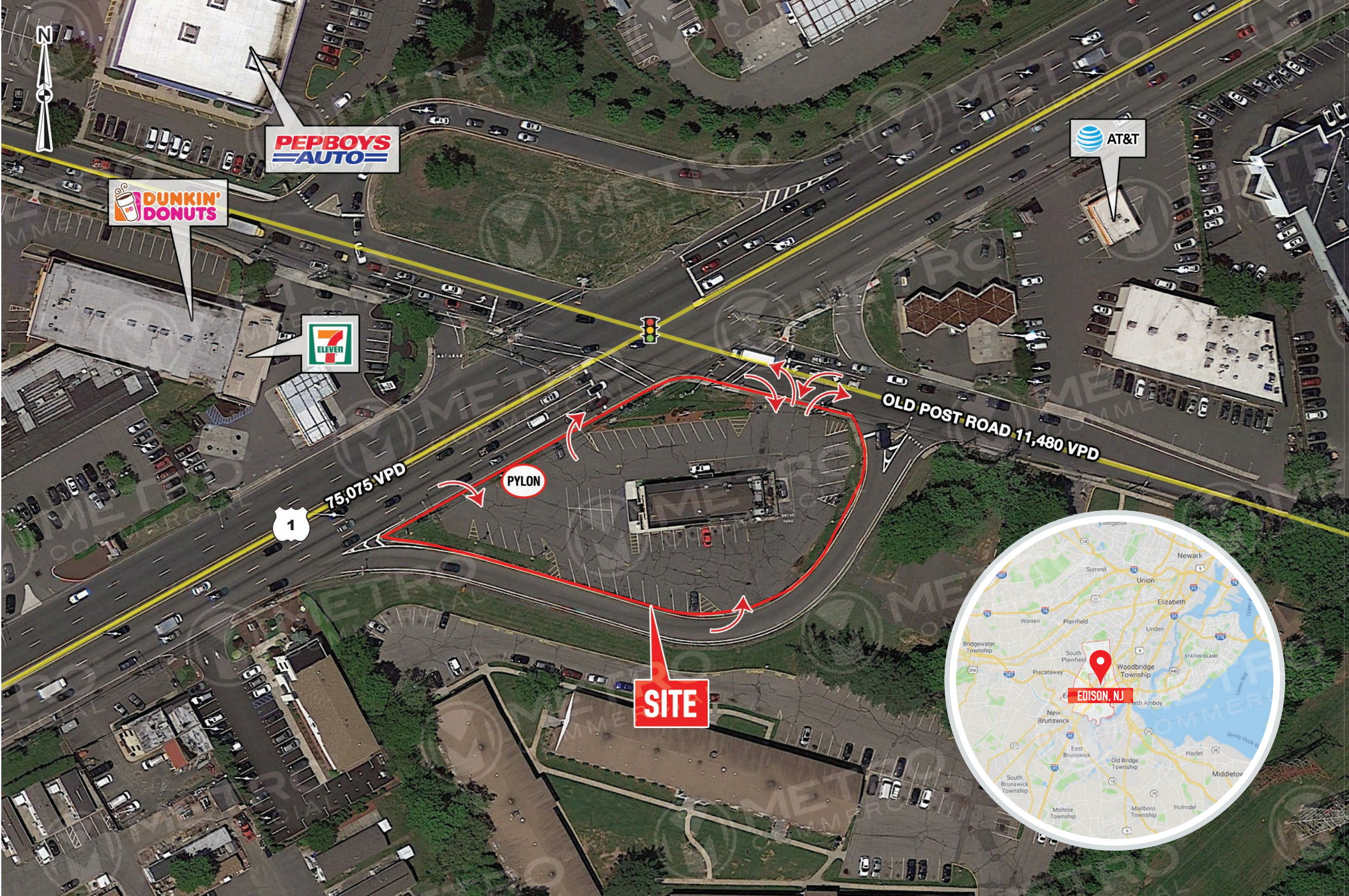
get in touch.

MAX SILVER

office 610.825.5222

direct 610.260.2672

msilver@metrocommercial.com



The information and images contained herein are from sources deemed reliable. However, Metro Commercial Real Estate, Inc. makes no representation whatsoever as to their accuracy or authenticity. Images shown may be modified for illustrative purposes. Images may be out-of-date and not current. 10.24.19

878 US-1
EDISON, NJ

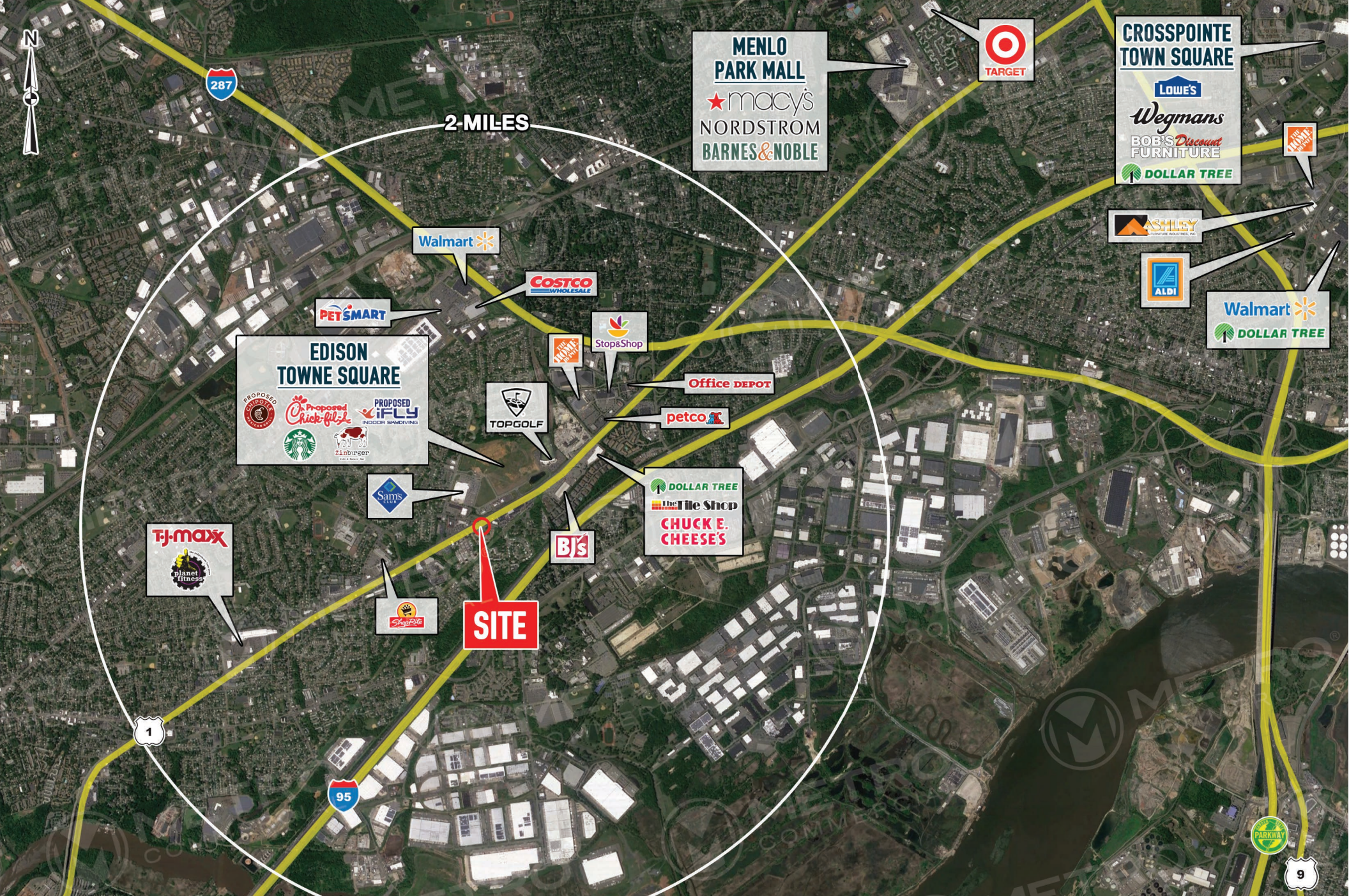




The information and images contained herein are from sources deemed reliable. However, Metro Commercial Real Estate, Inc. makes no representation whatsoever as to their accuracy or authenticity. Images shown may be modified for illustrative purposes. Images may be out-of-date and not current. 10.24.19

878 US-1
EDISON, NJ





EDISON TOWNE SQUARE

PROPOSED

MENLO PARK MALL

macy's
NORDSTROM
BARNES & NOBLE

CROSSPOINTE TOWN SQUARE

LOWE'S
Wegmans
BOB'S Discount FURNITURE
DOLLAR TREE

SITE

TJ-maxx

Bj's

DOLLAR TREE
The Tile Shop
CHUCK E. CHEESE'S

TOPGOLF

Office DEPOT

petco

Stop&Shop

WALMART

COSTCO WHOLESALE

Walmart

PET SMART

TARGET

ASHLEY

ALDI

Walmart
DOLLAR TREE

PARKWAY

9

287

1

95



The information and images contained herein are from sources deemed reliable. However, Metro Commercial Real Estate, Inc. makes no representation whatsoever as to their accuracy or authenticity. Images shown may be modified for illustrative purposes. Images may be out-of-date and not current. 10.24.19

**878 US-1
 EDISON, NJ**

