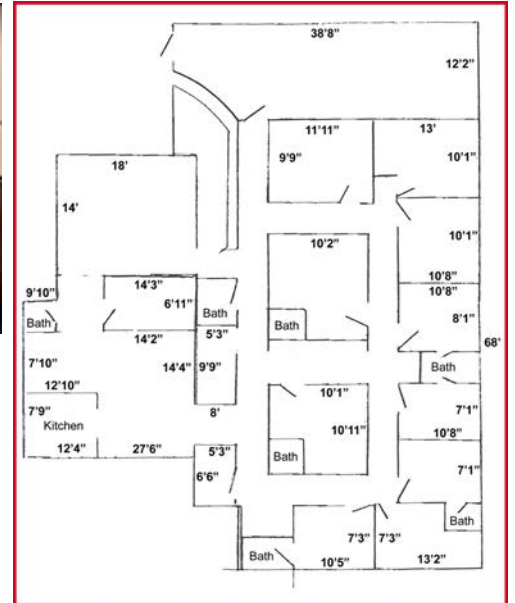


MEDICAL/OFFICE SPACE FOR LEASE

501 & 511 Street Road Southampton, PA



Property Information

- 3,900± SF available for lease at 501 Street Road
- Currently fit out as medical space (previously St. Mary's)
- Abundant parking
- Potential for building signage
- Traffic Count Street Road: 22,489 VPD
- Existing Tenants Include: Abington Health Physicians, and Emotional Harmony, LLC

Contact Information:

Zena Charokopos

+1 215 396 2900 ext 103

zena.charokopos@naimertz.com



NAI Mertz | 1105 Industrial Highway
Southampton, PA 18966
+1 856 396 2900 | naimertz.com



511 Street Road



Property Information

- 1,715± SF for lease at 511 Street Road
- 945± SF on 1st floor / 770± SF on 2nd floor
- Front and back private bldg. entrances
- Abundant parking
- Existing tenant includes: Farmers Insurance
- Great exposure on Street Road
- Additional bonus basement space (945 SF)

Location Information

Located directly on Street Road near the intersection of Route 232 (2nd Street Pike)

KEY DISTANCES

First Children's Academy	335 ft	1 min
Walgreens	0.3 mi	2 mins
Hampton Square Shopping Center	0.8 mi	5 mins
Giant Feasterville Square	2.7 mi	7 mins
Route I-95	11.3 mi	25 mins
PA Turnpike (I-276)	12.3 mi	22 mins
Route 1	22.1 mi	33 mins

