

OFFICE SPACE
FOR LEASE



FISK BUILDING

1621 E Hennepin Ave, Minneapolis, MN 55414

BUILDING HIGHLIGHTS

- Renovated two-story creative office building
- Located two blocks off I-35W on the Hennepin Avenue exit
- Vast floor to ceiling windows provide panoramic views and abundant natural light
- Availability 1,900 - 5,100 SF
- Easy access to Downtown Minneapolis I-35W and I-94
- Loading docks available
- New passenger and freight elevators
- Updated restrooms, windows, HVAC/electrical and common areas
- Dedicated building parking lot

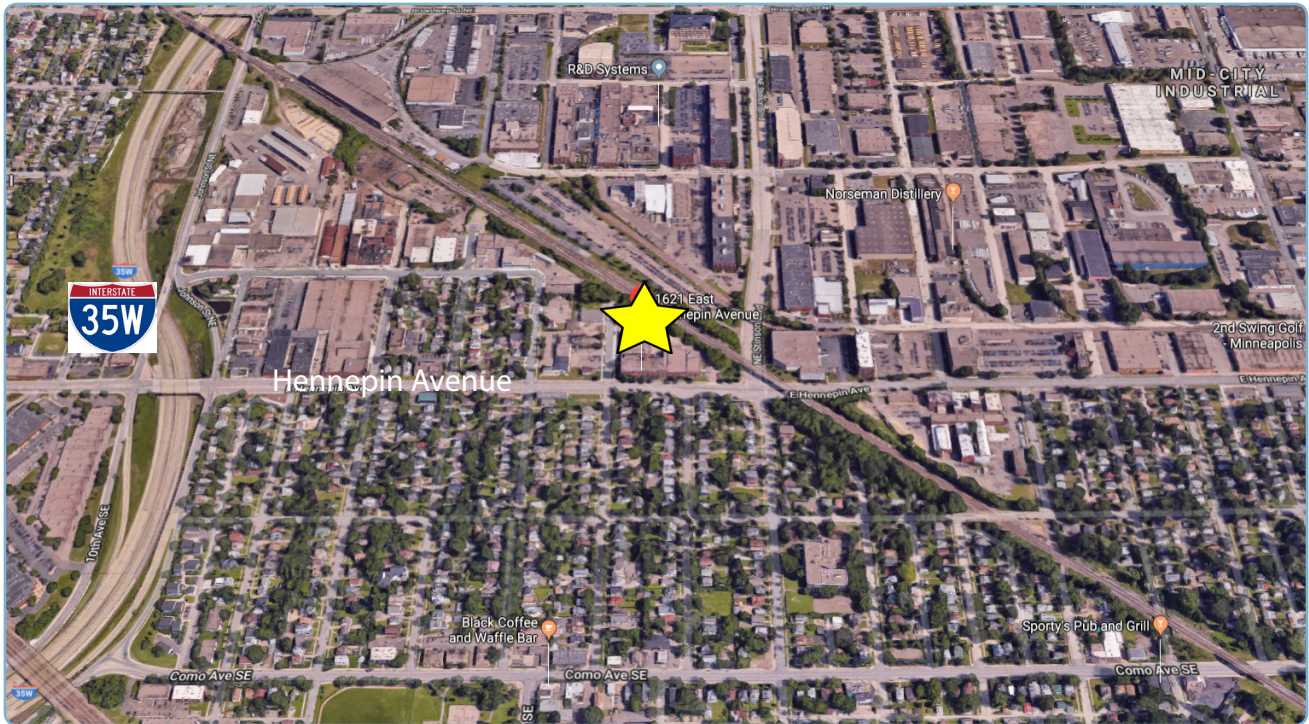


900 North Third Street, Minneapolis, MN 55401

MIKE OLSON
(612) 359-5843
molson@sr-re.com
www.sr-re.com

FISK BUILDING

1621 E Hennepin Ave, Minneapolis, MN 55414



Building Address	1621 East Hennepin Avenue Minneapolis, MN 55414
Floors	Two
Availability	Suite B26 - 5,058 SF - \$13.00 PSF Net Suite B50 - 2,249 SF - \$13.00 - \$14.00 PSF Gross Suite B60 - 1,890 SF - \$13.00 - \$14.00 PSF Gross
CAM	\$4.87 PSF
Taxes	\$1.97 PSF
Insurance	<u>\$0.14 PSF</u>
Total	\$6.98 PSF (2019 Est.)
Parking	Dedicated building parking lot
Access	Easy access to I-35W and Hennepin Avenue



900 North Third Street, Minneapolis, MN 55401

MIKE OLSON
(612) 359-5843
molson@sr-re.com
www.sr-re.com