

# UNIQUE OWNER/USER OPPORTUNITY

260-272 Market Street • Port Hueneme, CA 93041

**PRICE  
REDUCTION**



For More Information  
Please Contact:

**JOHN BATTLE, SIOR**

818.444.4908  
jbattle@lee-re.com  
Lic # 00700493

**PETER PADDEN**

805.626.1283  
ppadden@lee-re.com  
Lic # 02008340

[www.lee-associates.com](http://www.lee-associates.com)

Lee & Associates - LA North/Ventura, Inc.  
Corporate ID #01191898  
A Member of the Lee & Associates  
Group of Companies  
26050 Mureau Road, Suite 101  
Calabasas, CA 91302  
818.223.4388 P 818.591.1450 F



COMMERCIAL REAL ESTATE SERVICES

No warranty or representation is made to the accuracy of the foregoing information. Terms of sale or lease and availability are subject to change or withdrawal without notice.

## PROPERTY HIGHLIGHTS

- Two Separate Parcels
- 20,854± Square Feet of Land
- 1,600± Square Foot Single-Story Office
- C-1 Zoning
- Easy Access Via Rear Alley
- Adjacent to Entrance of Port of Hueneme
- Walking Distance to Hueneme Boulevard
- **SALE PRICE: ~~\$795,000~~ \$539,500**

# UNIQUE OWNER/USER OPPORTUNITY

260-272 Market Street • Port Hueneme, CA 93041



Pacific Ocean

Hueneme Beach/Pier

**SUBJECT**  
260-272 Market Street  
Port Hueneme, CA

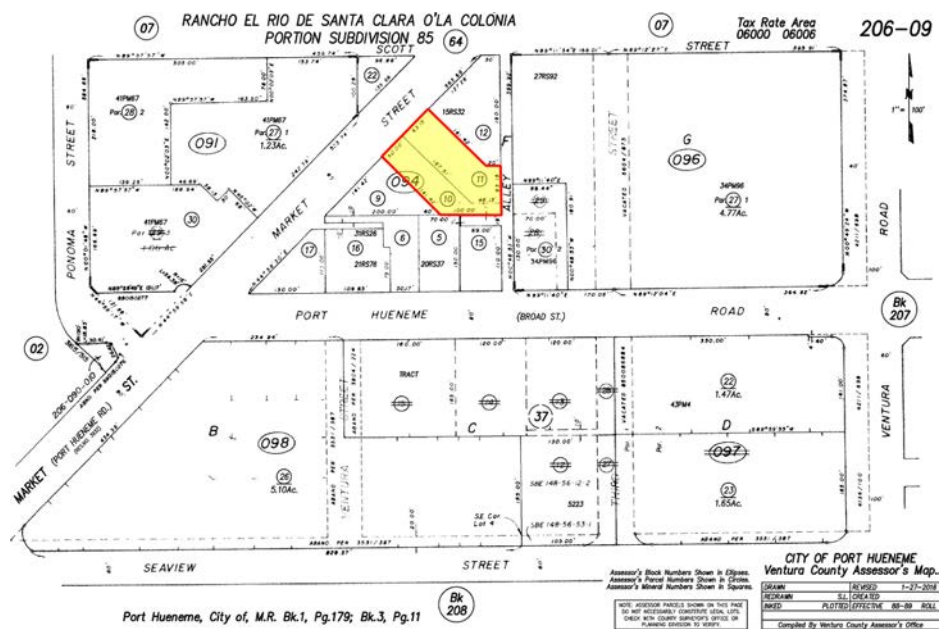
For More Information  
Please Contact:

**JOHN BATTLE, SIOR**  
818.444.4908  
jbattle@lee-re.com  
Lic # 00700493

**PETER PADDEN**  
805.626.1283  
ppadden@lee-re.com  
Lic # 02008340



COMMERCIAL REAL ESTATE SERVICES  
No warranty or representation is made to the accuracy of the foregoing information. Terms of sale or lease and availability are subject to change or withdrawal without notice.



Port Hueneme, City of, M.R. Bk.1, Pg.179; Bk.3, Pg.11

CITY OF PORT HUENEME  
Ventura County Assessor's Map.  
Assessor's Block Numbers Shown in Circles  
Assessor's Parcel Numbers Shown in Squares  
Assessor's Acreage Numbers Shown in Squares  
TAX MAP  
1-27-2018  
CITY OF PORT HUENEME  
CITY CLERK  
PAID: [ ]  
Compiled by Ventura County Assessor's Office