



**BEVERLY HILLS MEDICAL OFFICE -
TROPHY LOCATION FOR LEASE**

8816 BURTON WAY, BEVERLY HILLS, CA 90211

Commercial Asset Group
1801 Century Park East, Suite 1550
Los Angeles, California 90067
P 310.275.8222 F 310.275.8223

Jason Cole
Managing Director
Phone: 310.272.7383
Email: jasonc@cag-re.com

cag | COMMERCIAL
ASSET GROUP



BEVERLY HILLS MEDICAL OFFICE - TROPHY LOCATION FOR LEASE

8816 BURTON WAY, BEVERLY HILLS, CA 90211

Property Details

Suite:	200
Available SF:	+/-2,000 SF
Rental Rate:	\$5.50 \$4.95/SF Modified Gross
Lease Term:	3 to 10 years
Parking:	Up to 9 spaces at Prevailing Building Rates

Property Highlights:

- Built out Medical Office in a Premier Area of Beverly Hills
- 3 blocks from Cedars Sinai Medical Center
- 2018 Interior Office and Exterior Building Renovations Completed
- Office has a Waiting Room, Nurses Station, 4 operatories, and Private Restroom
- Suitable for Virtually all Medical Practices and Specialties
- Previously Occupied by a AAAASF Certified Surgery Center
- Private Elevator That Opens Directly into the Office
- Excellent on-site Parking

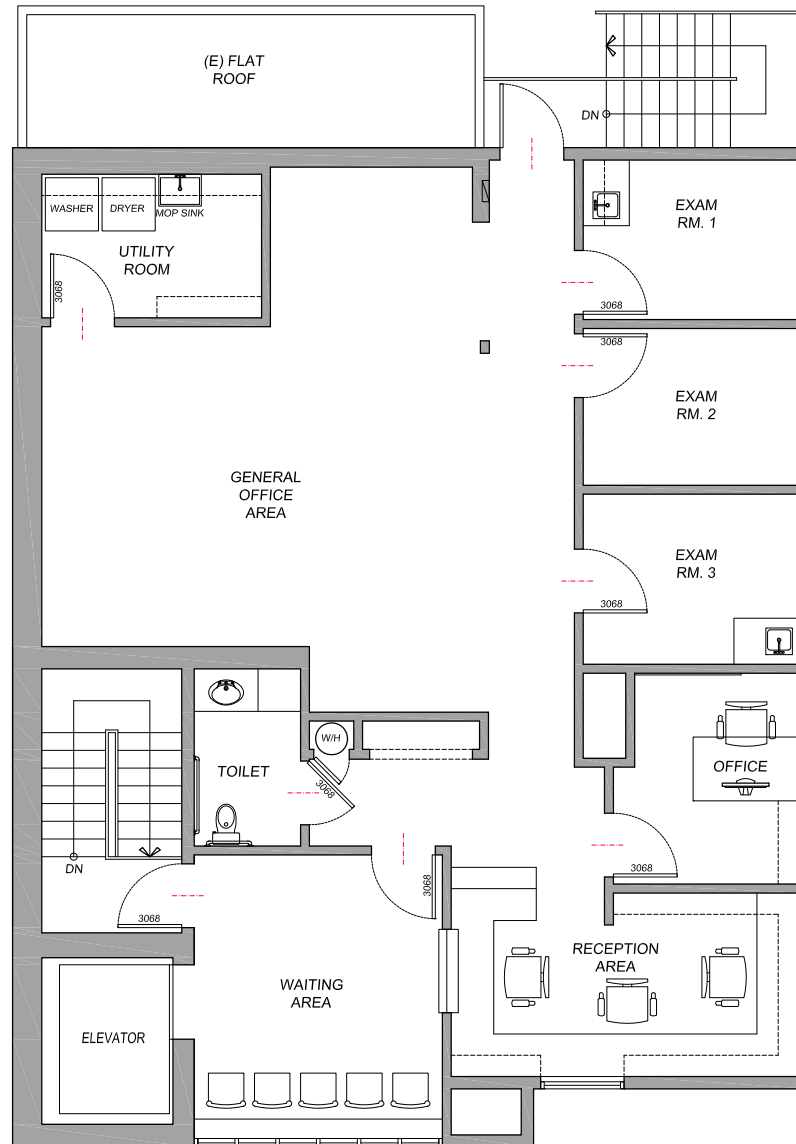
AERIAL

8816 BURTON WAY, BEVERLY HILLS, CA 90211



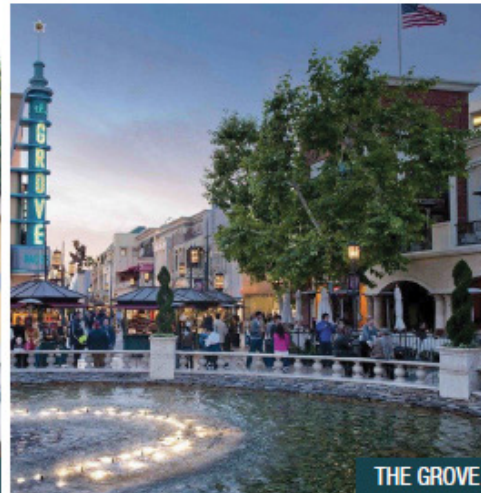
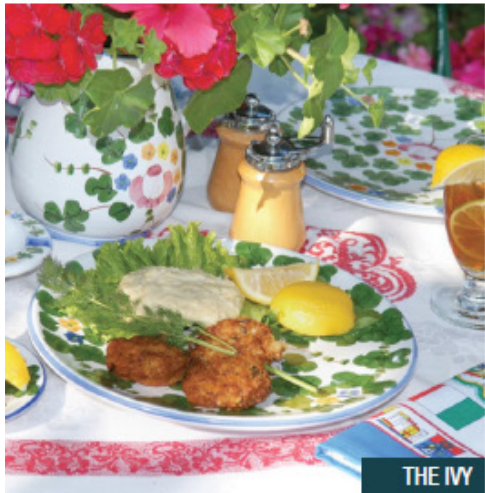
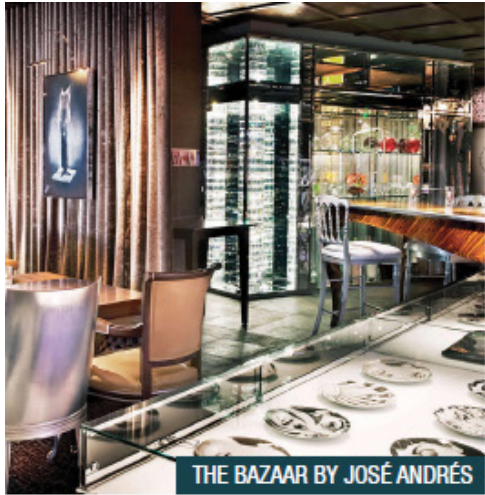
FLOOR PLAN

8816 BURTON WAY, BEVERLY HILLS, CA 90211



AREA AMENITIES

8816 BURTON WAY, BEVERLY HILLS, CA 90211





For more information, please call.



Commercial Asset Group, Inc.
1801 Century Park East, Suite 1550
Los Angeles, California 90067
P 310.275.8222 F 310.275.8223
www.cag-re.com
License #01876070

Jason Cole
Managing Director
Phone: 310.272.7383
Email: jason@cag-re.com
Lic. 01727670

These materials are based on information and content provided by others, which we believe are accurate. No guarantee, warranty or representation is made by Commercial Asset Group, Inc. or its personnel. All interested parties must independently verify accuracy and completeness. As well, any projections, assumptions, opinion, or estimates are used for example only and do not represent the current or future performance of the identified property. Your tax, financial, legal and toxic substance advisors should conduct a careful investigation of the property and its suitability for your needs, including land use limitations. The property is subject to prior lease, sale, change in price, or withdrawal from the market without notice.